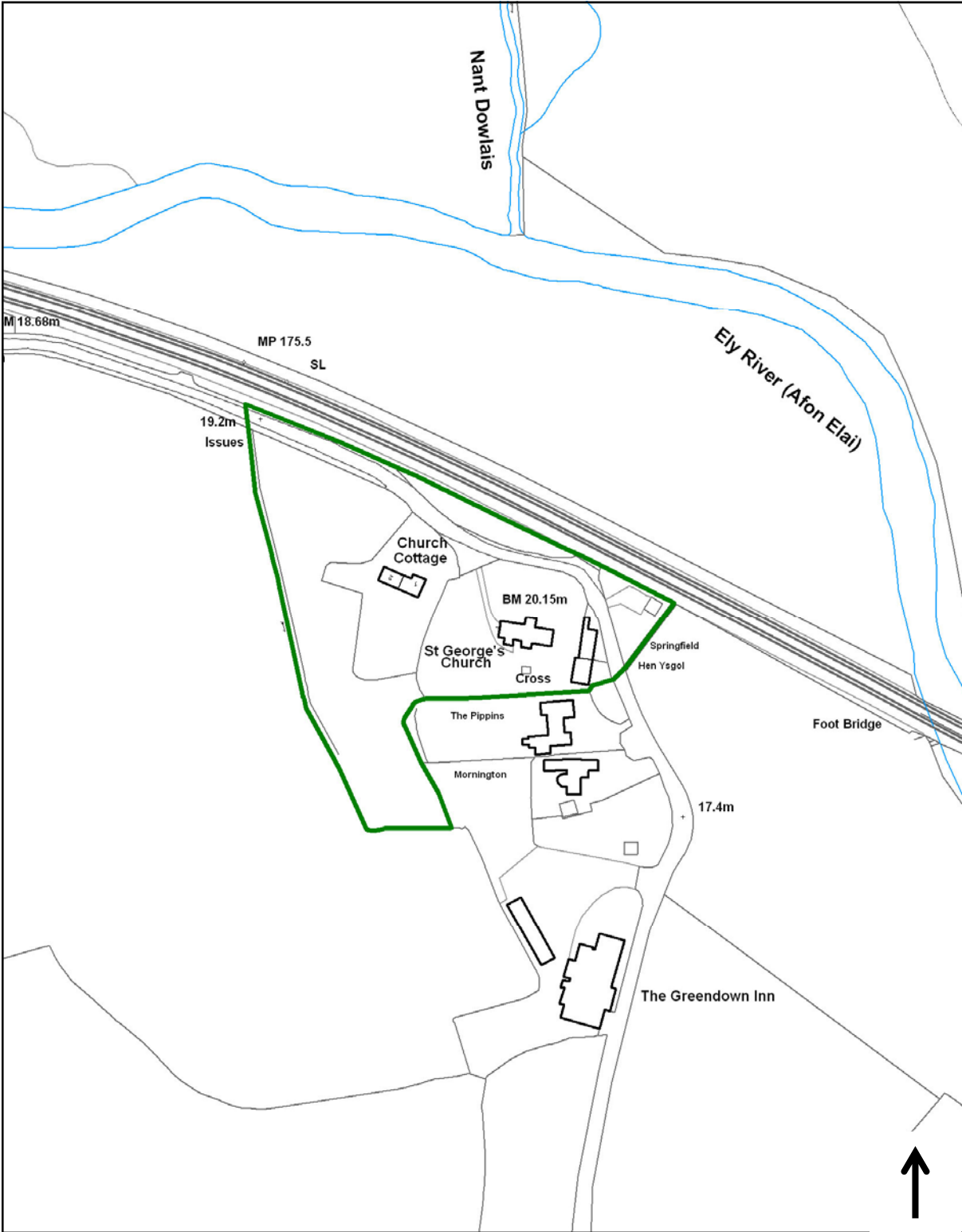


St George's-Super-Ely Conservation Area



For further information please contact the Conservation & Design Team:
 (01446) 704626 / 8
www.valeofglamorgan.gov.uk

Vale of Glamorgan Council
 Dock Office
 Barry Docks
 Barry CF63 4RT

Not to Scale. For illustrative purposes only.
 First Designated: March 1973
 Amended: March 2009

© Crown copyright. All rights reserved.
 The Vale of Glamorgan Council.
 Licence No. 100023424 2009.
 © Hawlfraint y Goron. Cedwir pob hawl. Cyngor Bro Morgannwg rhif trwydded 100023424 2009.