

The Index

for families of children and young people
with disabilities or additional needs



A guide for families

Hello

It's good to have the right information and know what support is available.

We want you to have a full happy life.

We want you to connect to services, take part in activities and have fun – that's what The Index is for.



What is The Index?

The Index lets you know about the services, activities and events happening in your area.

Who is it for?

The Index is for families of children and young people with disabilities or additional needs.

You can sign up to The Index if you are a parent or carer of a child or young person with disabilities or additional needs or a professional working with a child.

Why?

Signing up means you don't miss out. You get:



The Index – a newsletter twice a year. It's packed full of information on activities, support groups, events, services, financial help, education, transition and more.



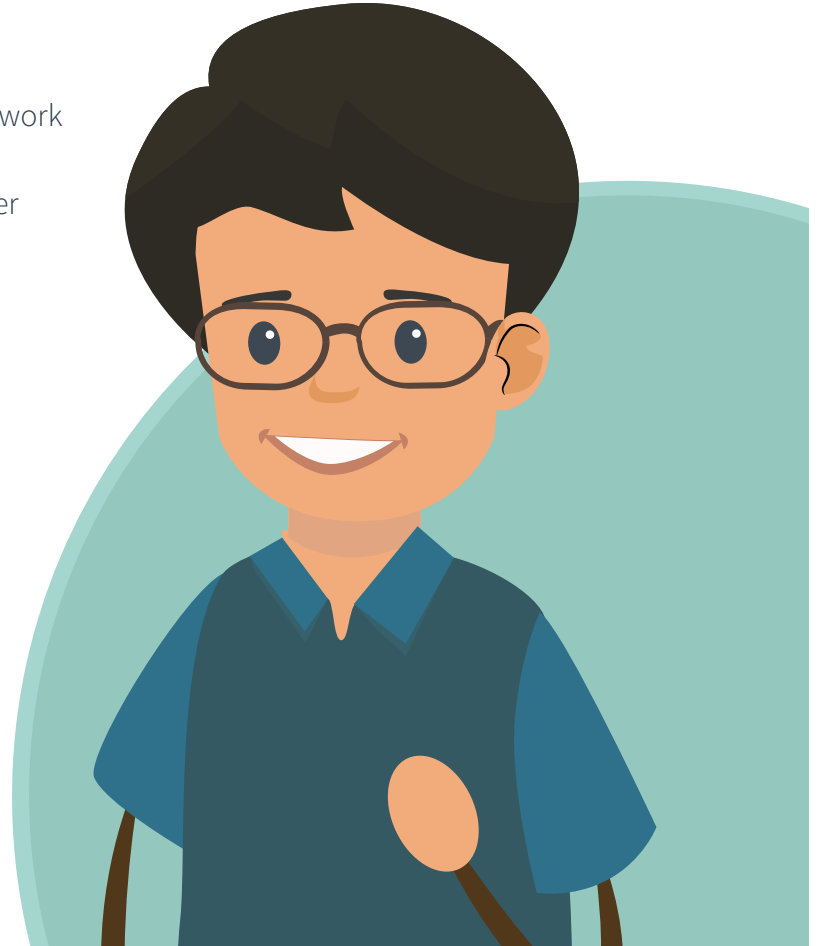
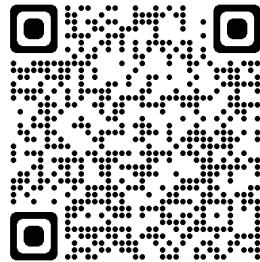
The Index eNews – emails about extra activities and events.

Is there anything else?

Yes, The Index also:

- connects you to organisations that can support you
- helps professionals know what you need so they can work better
- means you can have a say on how we plan and deliver services in your area.

Watch our animation
to find out more



How can I sign up?

Vale Family Information Service

☎ 0800 587 10 14

✉ theindex@valeofglamorgan.gov.uk

💻 www.valeofglamorgan.gov.uk/fis

You don't have to sign up,
but it's good to be connected.

What information do we need?



Information about your child's:

- name
- date of birth
- contact details
- the school they go to.



What disabilities or additional needs they have.



What services and support your family use.



What information or support you need.

What do you do with my information?

We keep all your information safe and private.

Information about you isn't shared with anyone else, unless you say it can be.

Sometimes information is used to plan services. It's collected as numbers and doesn't use anyone's name or other details. Each Local Authority follows the law and always protects your details.



Thanks for reading this

Here are some contact numbers:

Health

Llandough Children's Centre
St David's Children's Centre

☎ 029 2071 5580
☎ 029 2053 6789

Social Services

Vale Child Health and Disability Team

☎ 01446 704284

Education

Vale Achievement for All
SNAP Cymru

☎ 01446 709180
☎ 0808 801 06 08

Information, Advice and Support

Vale Family Information Service
Vale Families First Advice Line
The Index

☎ 01446 704704
☎ 0800 032 73 22
☎ 0800 587 10 14

Youth

Vale of Glamorgan Youth Service

☎ 01446 709308

Play

Vale Play Development

☎ 01446 704809

