

Meeting of:	Cabinet
Date of Meeting:	Monday, 19 October 2020
Relevant Scrutiny Committee:	Learning and Culture
Report Title:	Update on the community benefits and sustainability outcomes of Band B of the 21 st Century Schools programme.
Purpose of Report:	To provide Cabinet with an update on the community benefits and sustainability outcomes of Band B of the 21 st Century Schools programme to date.
Report Owner:	Deputy Leader and Cabinet Member for Education and Regeneration
Responsible Officer:	Paula Ham, Director of Learning and Skills
Elected Member and Officer Consultation:	<p>Lisa Lewis: Operational Manager, Strategy & Resources</p> <p>Jane O'Leary: 21st Century Schools Programme Manager</p> <p>Carolyn Michael: Operational Manager, Accountancy</p> <p>Trevor Baker: Head of Strategy, Community Learning & Resources</p> <p>Committee Reports</p>
Policy Framework:	This is a matter for Executive decision by Cabinet.
<p>Executive Summary:</p> <ul style="list-style-type: none"> • This report provides an update on high level targets and examples of community benefits delivery by the 21st Century Schools team and the appointed contractors (Bouygues, ISG and Morgan Sindall) and consultants (AECOM) of the Barry Secondary Learning Communities (BSLC) and Western Vale Primaries (WVP) projects. • Between January 2019 to September 2020 the Barry Secondary Learning Communities and Western Vale Primaries projects have delivered: <ul style="list-style-type: none"> ○ Over 5,000 person weeks of New Entrant Jobs with 58 new full-time jobs; ○ Over 3,000 person weeks of New Entrant Training, including 26 apprenticeships and 30 work experience placements; ○ Nearly 400 hours of school STEM engagements, reaching over 2,800 pupils; ○ 4 supply chain engagement events; ○ An average of 99% of construction waste avoiding landfill; and 	

- An average of 80% construction spend within Wales, with 76% of subcontractors based in Wales and 50% of the workforce coming from the local postcode.
- The BSLC project procurement received “highly commended” in the Wales Go Awards, Social Value category. It was recognised and short listed for the Welsh Government and UK Go Awards in Social Value.
- The BSLC contractors are working closely with the Council’s Communities 4 Work programme and have successfully provided a number of work placement opportunities.
- Career changers programme has been hosted by the Vale, two opportunities have already been filled through this programme, and one individual has moved from one contractor to another at the end of their initial 12-month training period.
- Work experience placements opportunities have been taken by a number of Vale pupils and individuals from various work programmes.
- All of the contractors have worked with local charities providing Christmas hampers and food / donations for the food bank.
- The three contractors have worked in partnership with the Job Centre Plus and Y Prentis to advertise opportunities and have attended a number of job and career fairs.
- A number of assemblies have been undertaken at the schools to inform the pupils about the building projects, such as site safety and career opportunities in construction, including how to gain experience through the work placement programme.
- The main BSLC contractors are upskilling a number of local sub-contractors to enable them to gain access to Tier 1 contractors approved supply chain databases.
- A new social business has been developed with Ysgol y Deri, the Vale’s special school, which will provide site catering for the three BSLC projects.
- Three community initiatives have also been accepted as part of the support for the wider community. These are two community garden projects and one school garden project; at Palmerston Adult Learning Centre, another near Pencoedtre High School, ‘Everyone’s Garden’ and the grounds shared by Ysgol Gwaun Y Nant and Oak Field Primary School.
- Supported schools through Covid-19 by creating an app to help schools return safely (ISG), delivered PPE and signage, and developed construction and ecology themed activities suitable for social distancing.
- The report also provides an update on how the 21st Century Schools programme is considering and implementing sustainability within its current schemes and future work to be delivered by 2024.
- All new build schools are designed to meet BREEAM Excellent standard which includes delivering energy efficient buildings and enhancing habitats for wildlife.
- The contractors will also participate in site hoarding competitions, one of which will celebrate the artistic talent of pupils and the other will be an experimental ‘green wall’ (a vertical structure covered by vegetation). There will also be opportunities as the programme progresses for pupils to get involved in landscaping, particularly tree planting and the allotment areas.

- The 21st Century Schools programme monitors a range of sustainability outcomes post-occupancy; including educational attainment, energy consumption, and community use of facilities.
- The Council has also been working on a process to approach sustainability more holistically and in particular to decarbonise our new school buildings with consideration of the whole life cycle; the overarching aim is to achieve net-zero carbon in future projects.
- To further embed sustainability and well-being, the Council has developed a directory in collaboration with Constructing Excellence in Wales, other industry partners and the Office of the Future Generations Commissioner to help integrate the Well-being of Future Generations (Wales) Act 2015 into the design and delivery process.

Recommendations

1. That Cabinet note the progress towards community benefits targets made by the 21st Century Schools team and the appointed contractors and consultants of the Barry Secondary Learning Communities and Western Vale Primaries schemes set out in the report.
2. That Cabinet note the sustainability measures already put in place within the 21st Century Schools programme and progress towards further measures to be implemented in future schemes.
3. That Cabinet refer the report to the Learning & Culture Scrutiny Committee for consideration with regards to the delivery of community benefits for existing and future 21st Century Schools schemes.
4. That Cabinet write to each of the contractors, thanking them for their work and efforts in contributing to this incredibly successful scheme.

Reasons for Recommendations

1. To provide Cabinet with an update on high level targets and examples of community benefits delivery by the 21st Century Schools team and the appointed contractors and consultants of the Barry Secondary Learning Communities and Western Vale Primaries schemes.
2. To provide Cabinet with an update on how the 21st Century Schools programme is considering and implementing sustainability within its current schemes and future work to be delivered by 2024.
3. To ensure the Learning and Culture Scrutiny Committee are updated on the progress made to date and for further consideration of future schemes.
4. To acknowledge the work carried out by the contractors on achieving those goals outlined within the report.

1. Background

21st Century Schools: Transforming Education Across the Vale of Glamorgan

- 1.1 The 21st Century Schools and Colleges Programme is a long-term strategic investment in educational estate throughout Wales. It is a unique collaboration between Welsh Government, the Welsh Local Government Association (WLGA), local authorities, colleges and diocesan authorities.
- 1.2 On 16 September 2019, Welsh Government wrote to the Council to confirm that the Council's revised Strategic Outline Programme had been approved. The revised programme provides the Council with an overall funding envelope of £167m for Band B of the 21st Century Schools Programme (which includes a proposed MIM revenue funded scheme). The Council's capital programme includes £135m for the capital element of the programme.

- 1.3** The Council's largest scheme is the Barry Secondary Learning Communities (BSLC) in which one refurbishment and two new secondary school buildings will be delivered across Barry, with a total investment of £86.7 million. These schemes are:
- Ysgol Gymraeg Bro Morgannwg, £21.5 million refurbishment and extension of the existing school buildings. ISG Construction have been appointed to deliver this scheme and construction has commenced onsite.
 - Whitmore High School, £30.5 million new build school on the existing site. Morgan Sindall have been appointed to deliver this scheme and construction has commenced onsite.
 - Pencoedre High School, £34.7 million new build school on the existing site. Bouygues UK have been appointed to deliver this scheme and construction has commenced onsite.
- 1.4** In addition to this, the Council has recently appointed ISG Construction to deliver the Western Vale Primaries scheme. This £14.485 million scheme will deliver three new build 210 place primary schools across the Western Vale. Designs for these schools are currently being finalised and construction is due to commence from Autumn 2020.

What are community benefits and why do we deliver them?

- 1.5** The Council's 21st Century Schools programme aims to provide long-term social, environmental and economic benefits to schools and the wider community. To achieve these wider programme aims, our appointed contractors are required throughout the design and construction process to deliver on a range of community benefits targets.
- 1.6** The Council is committed to delivering greater value for money and sustainable community benefits in line with Welsh Government's ['Delivering Maximum Value for the Welsh Pound'](#). The minimum targets set as part of the procurement process are consistently higher than the minimum targets required by Welsh Government.
- 1.7** Targets include using Welsh supply chains, supporting small local businesses, and offering opportunities for new entrants to gain skills and experience in construction through apprenticeships. School engagements are another key area, particularly the promotion of "STEM" (science, technology, engineering, and mathematics) through site visits and work experience. The wider community is also supported as local groups can apply for in-kind donations and volunteering time on projects.

2. Key Issues for Consideration

A Collaborative Approach

- 2.1** The Council is committed to achieving real results which have a long-term impact on individuals and the region in line with the Council's Corporate Plan. As such, the Council has adopted an innovative collaborative approach to deliver consistent and meaningful results across all projects. This collaborative approach

is not normally found within construction projects of this nature as contractors would usually operate separately on community benefits and other matters.

2.2 What this means in practice is that monthly meetings are held by the 21st Century Schools team with all the contractors and cross-contractor communication is facilitated between community engagement officers. This helps to minimise duplication and maximise positive outcomes by sharing opportunities and approaches; for example, holding joint supply chain events and the creation of a standard work experience programme across all sites. Healthy competition is encouraged on certain actions, such as on the green wall hoarding competition, to maximise enthusiasm for initiatives.

2.3 In addition, the 21st Century Schools team and contractors meet quarterly with a steering group of public, private and third-sector partners to ensure the programme understands and delivers upon the needs of the community. This group includes other



Council teams engaged in regeneration, employment and learning, local Elected Members, Glamorgan Voluntary Services, Cardiff and Vale college, and CITB.

Achievements to date

2.4 In terms of high-level figures, between January 2019 and September 2020 the Barry Secondary Learning Communities and Western Vale Primaries projects have delivered:

- Over 5,000 person weeks of New Entrant Jobs with 58 new full-time jobs;
- Over 3,000 person weeks of New Entrant Training, including 26 apprenticeships and 30 work experience placements;
- Nearly 400 hours of school STEM engagements, reaching over 2,800 pupils;
- 4 supply chain engagement events;
- An average of 99% of construction waste avoiding landfill; and
- An average of 80% construction spend within Wales, with 76% of subcontractors based in Wales and 50% of the workforce coming from the local postcode

2.5 These projects are still in their early stages, with many more community benefits to come.

2.6 The BSLC project procurement received “highly commended” in the Wales Go Awards, Social Value category. It was recognised and short listed for the Welsh Government and UK Go Awards in Social Value.

2.7 An overview of the progress made to date is available in the attached infographic (Appendix A) and presentation (Appendix B).

Work experience, training and upskilling

2.8 The Council ensures benefits are shared across the Vale of Glamorgan whilst also targeting specific support needed within local areas. For example, job opportunities are available to the whole county, but targeted job fairs have been held in certain areas within the Vale with higher levels of unemployment. Construction consultants AECOM (multi-disciplinary contractors working across all of the Vale's 21st Century School programme) and supply chain partners are also engaged in apprenticeships and work experience requirements to enable training across a range of specialties which may not be usually considered by participants from socio-economically deprived areas.



2.9 The Council hosted a CITB 'Career Changers' programme in June 2019, designed to help women enter or re-enter the construction sector. From this event and the ongoing CITB programme support, ISG (contractor on Ysgol Gymraeg Bro Morgannwg) and Morgan Sindall (contractor on Whitmore High School) have taken on groundworks apprentices and are providing them with the necessary training to become an experienced telehandler drivers and traffic marshals. It was hoped another event would be held in March 2020 to help find a suitable candidate for work on Pencoedtre High School (contractor Bouygues UK), but due to Covid-19 restrictions this has been postponed. Bouygues have now taken the apprentice from Morgan Sindall to continue her training after the initial 12 month period had been completed.

2.10 The contractors are also working closely with the Council's Communities 4 Work programme, who sit on the wider steering group, and have successfully provided a number of work placement opportunities. For example, a service user of Communities 4 Work who had an interest and skills in computer programming was able to be linked with AECOM for work experience through the steering group. The individual was shown how to use the BIM system and following this work experience was able to successfully gain full time employment in a relevant field.

2.11 The contractors have also attended numerous jobs fairs within the Vale and surrounding regions and have worked with Jobcentre Plus and Y Prentis to match participants with suitable placements. If applicants needed a CSCS card (required for site work) they were signposted to Communities 4 Work to be put onto their training courses. Applicants are kept on the contractors' register until they complete this necessary step and can then be assigned to the relevant site works packages. The contractors have also engaged with the 'School of Hard Knocks' programme which will help those furthest from the workforce start their journey towards employment.

2.12 The 21st Century Schools team with AECOM and the contractors have also undertaken a number of assemblies at the schools to inform the pupils about the building projects, such as site safety and career opportunities in construction, including how to gain experience through the work placement programme. From these engagements, an opportunity at McCann and partners became available and the 21st Century School team were able to link with a suitable candidate for the position. A pupil from Ysgol Gymraeg Bro Morgannwg was appointed to a trainee engineer position.



2.13 Pupils will also have the opportunity to take part in national competitions promoting STEM in construction. For example, Morgan Sindall are working with 6th form pupils at Whitmore High School on the EESW STEM national scheme where they will present designs for a more economical and energy efficient portacabin. This will provide essential skills and experience for future careers.

2.14 During the Covid-19 pandemic, ISG and 21st Century Schools team supported schools by creating an app to help schools return safely. The contractors also delivered PPE and signage and developed construction and ecology themed activities suitable for social distancing. (These activities are available online – please visit Hwb.gov.wales and search “Morgan Sindall”, “ISG”, and “Bouygues” under resources.)

2.15 The contractors are scoping delivering work experience online and it is hoped this will be offered to schools from October 2020. This will be able to be delivered regardless of Covid-19 restrictions and is an opportunity to increase team project-based work experience which is increasingly becoming relevant to school curriculum delivery.

Supply chain engagements and supporting social enterprises

2.16 The 21st Century Schools team and contractors held a joint supply chain event during the summer 2019 and are currently working with a number of new organisations. The main contractors are upskilling a number of sub-contractors to enable them to gain access to Tier 1 contractors approved supply chain databases. This is an important process to help meet local supply chain targets as many smaller firms face barriers to getting onto these approved lists and so providing the necessary skills and knowledge will help these sub-contractors gain work on projects in the local and wider region in future.

2.17 Where packages are being delivered by the same contractor across the sites, the main contractors have sought to increase agreed wider benefits. For instance, increasing the number of apprentices or upskilling opportunities the contractor takes on.

- 2.18** “Bocs boyd” has been developed with Ysgol y Deri, the Vale’s special school, which will provide site catering for the three Barry Secondary Learning Community projects. Pupils from Ysgol Y Deri will gain first hand work experience in addition to their general studies on the site. A mobile canteen unit has been donated by Morgan Sindall to enable this function to be sustained after project completion. Bocs boyd and Ysgol Y Deri are also working with the Council’s LATC (Big Fresh Catering) in developing paid work opportunities for young people.

Community projects and engagements

- 2.19** The 21st Century Schools programme also seeks to support projects, organisations, or social enterprises operating within the Vale of Glamorgan which improve outcomes for people, the environment, and/or the local economy through community benefits. The first stage of free support is available between January 2019 – 2022 for in-kind donations and volunteer time on projects. A range of support is available and could include help with painting a community space, procurement advice, or training opportunities for service users.
- 2.20** Project applications are scored by a sub-group of volunteers from the community benefits steering group. Shortlisted applications are then discussed at the following contractors meeting and the contractors make the final decision on which projects they can support.
- 2.21** To launch the community initiatives aspect of the programme, a joint litter pick event was held on Barry Island in May 2019. This brought together the three contractors and community groups, including local cadets.
- 2.22** A “Living Libraries” project was accepted in Spring 2020 to speak library users about the local school construction projects. This pilot would help to shape a sister project going into care homes to speak to residents about their memories of working in construction and / or the local area. However, both these projects have been postponed due to Covid-19 restrictions.
- 2.23** To date, three community gardening projects have also been successful in both application stages; a food growing and sensory garden at Palmerston Adult Learning Centre, another community garden managed by the Council’s Community Investment team and near Pencoedtre High School, named ‘Everyone’s Garden’, and to tidy up the shared grounds at Ysgol Gwaun Y Nant and Oak Field primary. These projects mainly aimed to help with clearing scrub and creating garden areas. It was hoped the wider community would be able to get involved on organised days but again this has been difficult to achieve with Covid-19 restrictions. The contractors are working collaboratively on these projects and take turns to lead; Morgan Sindall lead on Palmerston Adult Learning Centre project, Bouygues UK lead on Everyone’s Garden, and ISG on Gwaun Y



Apply for Community Benefits through the 21st Century Schools Programme!

What's on offer?

- Free support is available between January 2019 – 2022
- In-kind donations and volunteer time on projects
- Business, management and procurement advice
- Work experience and training opportunities; including construction apprenticeships and digital skills

Who can apply?

- Projects, organisations, or social enterprises operating within the Vale of Glamorgan
- Projects involved in improving outcomes for people (particularly NEET 16-24 year olds), the environment, and/or the local economy



How can projects apply?

- Visit www.valeofglamorgan.gov.uk/21st-Century-Schools to find out more and download an application form
- Please direct any queries to 21stcenturyschools@valeofglamorgan.gov.uk or 01446709828

Ysgolion yr 21ain Ganrif
21st Century Schools



Nant and Oak Field. These projects were due to start in Spring 2020 but will now begin in Autumn 2020, depending upon Covid-19 restrictions.

- 2.24** Further projects are currently going through the applications stages and momentum around this aspect of the programme is growing as communications and case studies increase.
- 2.25** The contractors of the three BSLC schemes had also been engaging with local communities more widely through newsletters and open evenings where members of the public were able to experience the building designs using VR headsets. In December 2019 the contractors also donated Christmas trees to the schools and hampers to local food banks.
- 2.26** Community engagements and support will continue throughout the programme, although these will now mainly be delivered online to reduce social contact during Covid-19. For instance, the contractors have been delivering virtual weekly site tours and uploading the videos to the schools' websites for the community to view site progress.

Environmental and well-being enhancement

- 2.27** Maintaining and enhancing the natural environment is another key driver within the programme. All new build schools being designed to meet BREEAM Excellent standard which includes delivering energy efficient buildings and enhancing habitats for wildlife. To date the contractors are achieving an average of 99% diversion of waste from landfill and have been providing waste audit information to the 21st Century Schools team for transparency.
- 2.28** The contractors will also participate in site hoarding competitions, one of which will celebrate the artistic talent of pupils and the other will be an experimental 'green wall' (a vertical structure covered by vegetation). The green wall will be visited and scored three times within a year to check how well the displays are maintained. Criteria will include biodiversity, connection with the local area, and plant suitability.
- 2.29** Improving pupil and staff well-being through nature and sporting activities has been and will continue to be another important consideration. For example, sporting provision is limited on the Whitmore High School site by the build process and so the contractor has provided new gym equipment and combination rugby-football posts to support healthy exercise which the school will be able to utilise after the development is complete. There will also be opportunities as the programme progresses for pupils to get involved in landscaping, particularly tree planting and the allotment areas. Early engagement will be starting with the schools on the nature areas to increase the likelihood of these being maintained and cherished long-term.

Wider Sustainability

- 2.30** Sustainability is a key component of the Council's 21st Century Schools Programme to address challenges like decarbonisation, healthy ecosystems, and community cohesion.
- 2.31** A range of outcomes from the Band A projects are monitored using Welsh Government's Brighter Spaces Toolkit. Data is inputted into this online system which can then be viewed by Welsh Government. Monitored outcomes include

educational attainment, energy consumption, and community use of facilities. Post-Occupancy Evaluations (POE) were conducted with staff and pupils after the buildings were handed over and follow up surveys (average of five years on since occupation) have been completed for Band A schools in 2019. These surveys investigate how the building is performing in practice as a teaching and learning facility with questions including, *'Do you think your new school building positively influences pupil morale, commitment, attendance and behaviour?'*, *'Does your new school site enable better social interaction (breakout spaces, playground, fields)?'* and *'Are you spending less time on disruptions relating to the operation of your school building(s) compared with your previous school buildings?'*.

- 2.32** The POE data has been analysed and compiled into a report to understand how the buildings are performing for their service users and identify any improvements which could be made to benefit future school building designs. This data will be fed back to relevant schools in Autumn 2020 and could feed into wider information about the Vale's educational assets through the Strategic Investment Operational Board (SIOB) working group. The feedback has also been shared with the relevant contractors of the Band A schemes.
- 2.33** The Council is also investigating energy consumption in schools delivered as part of Band A of the 21st Century Schools Programme, as well as wider schools in the Vale, to see whether there are any trends over time or between different types of buildings or uses. Photovoltaics (PV) energy output and income generation has also been examined to quantify their potential financial value to schools. The team worked with energy managers from the Council's property department to collect consumption and generation data from the Vale schools covering the last ten-year period. The data has been reported to SIOB the and other departments using Power BI software and written analysis. This is an ongoing project in which the next steps are to quantify the impacts of energy efficiency measures across schools in the Vale (e.g. energy consumption before and after installation of LED lighting or insulation) and identify building improvements which will help to decarbonise the Vale's educational assets.
- 2.34** On 29 July 2019, the Vale of Glamorgan Council declared a 'climate emergency' and committed to reducing its carbon emissions to net zero before the Welsh Government target of 2030, supporting the implementation of the Welsh Government's new Low Carbon Delivery Plan. (Council minute 209)
- 2.35** In response to the declaration of a climate emergency, the Council is developing several Band B schools to be low or net zero carbon in-use through additional renewables and piloting an all-electric solution. These measures will be put in place for St Nicholas CIW primary, St David's CIW primary and Llancafarn primary (also known as the Western Vale Primaries project).
- 2.36** Taking decarbonisation further, the Council has also been working on a process to approach sustainability more holistically and in particular to decarbonise our new school buildings with consideration of the net zero whole life cycle carbon. This process builds upon and brings together principles from standards like BREEAM, PassivHaus, the Well-being of Future Generations (Wales) Act 2015 and the Community Benefits requirements from Welsh Government. The process includes utilising building modelling software to optimise building orientation for solar gain and PV placement, setting far higher targets than Part-L requirements for U-

values and air tightness, and requiring buildings to generate more energy than they consume (making them “carbon positive”).

- 2.37** To help this process, the embodied and in-use carbon and energy from building materials is being investigated, along with a range of other sustainability factors like biodiversity, insulation value, transportation and waste, to find out where changes can be made in future projects to reduce environmental impacts from materials.
- 2.38** The team are piloting this new method on an upcoming nursery provision project. A scalable model will be created from this pilot to embed into future practice.
- 2.39** To ensure the sustainability principles are embedded into the entire process a Sustainability Charter is also being developed which contractors will be required to sign up to in future procurement. In addition to the sustainability aspects detailed above, this charter also covers sustainability aspects such as ecology, health and well-being, and water efficiency.
- 2.40** To further embed sustainability and well-being, the Council has developed a directory in collaboration with Constructing Excellence in Wales, other industry partners and the Office of the Future Generations Commissioner to help integrate the Well-being of Future Generations (Wales) Act 2015 into the design and delivery process. This involves actions within each RIBA stage being monitored against the Well-being goals to ensure the well-being of current and future generations is considered throughout the programme by all stakeholders. An additional RIBA Stage 8 has been created to ensure the building’s end of life scenario is planned for to encourage deconstruction and reuse of materials rather than traditional demolition. This directory has been presented to other local authorities through the CLAW networking group and at a Sustainable Buildings event held by Cardiff University. This directory is being utilised by the 21st Century Schools projects within the Vale and throughout Wales. The directory template will be implemented for each project and independently audited. Further work on embedding the project directory into public construction practice is being funded by the Office of the Future Generations Commissioner and Constructing Excellence in Wales.

3. How do proposals evidence the Five Ways of Working and contribute to our Well-being Objectives?

- 3.1** The Well-being of Future Generations Act 2015 (“the 2015 Act”) requires the Council to think about the long-term impact of their decisions, to work better with people, communities and each other and to prevent persistent problems such as poverty, health inequalities and climate change.
- 3.2** The Council has committed as part of the Corporate Plan 2020-2025 to achieving a vision of ‘Working Together for a Brighter Future’. This plan is reflective of the Welsh Government’s Well-being of Future Generations Act and is comprised of four Well-being objectives to deliver this vision:
- Objective 1 - To work with and for our communities
 - Objective 2 - To support learning, employment and sustainable economic growth
 - Objective 3 - To support people at home and in their community

- Objective 4 - To respect, enhance and enjoy our environment

3.3 To make sure we are all working towards the same purpose, the 2015 Act puts in place seven well-being goals on the Council. The 2015 Act makes it clear the listed public bodies must work to achieve all of the goals, not just one or two, these being:

- A prosperous Wales
- A resilient Wales
- A healthier Wales
- A more equal Wales
- A Wales of cohesive communities
- A Wales of vibrant culture and Welsh Language
- A globally responsible Wales

3.4 The 21st Century Schools Programme contributes to achieving the wellbeing goals by:

- Improving sustainability of school buildings through the creation of BREEAM Excellent accommodation.
- Ensure an efficient supply and demand of school places across the Vale of Glamorgan through effective forecasting of future demand.
- Providing additional school places to meet increased demand as a result of recent and proposed housing developments.
- Providing facilities available for community use.

3.5 The 2015 Act imposes a duty on all public bodies in Wales to carry out “sustainable development”, defined as being, "The process of improving the economic, social, environmental and cultural well-being of Wales by taking action, in accordance with the sustainable development principle, aimed at achieving the well-being goals." The action that a public body takes in carrying out sustainable development includes setting and publishing well-being objectives, and taking all reasonable steps in exercising its functions to meet those objectives.

3.6 The 2015 Act sets out five ways of working needed for the Council to achieve the seven well-being goals, these being:

- The importance of balancing short-term needs with the needs to safeguard the ability to also meet long-term needs.
- Considering how the Council’s objectives impact upon each of the wellbeing goals listed above.
- The importance of involving people with an interest in achieving the well-being goals and ensuring that those people reflect the diversity of the area which the Council services.
- Acting in collaboration with other persons and organisations that could help the Council meet its wellbeing objectives.

- Acting to prevent problems occurring or getting worse.

3.7 The 21st Century Schools Programme meets the five ways of working by:

- Responding to the need to ensure that there is a well-managed balance of supply and demand of school places as a result of recent and planned housing developments. It is recognised that the changing demographics in the Vale of Glamorgan will significantly affect the demand for our services. Short term and long term need and the assessment of demographic increases is an important aspect of the Council's strategic planning responsibilities.
- Developing schools that will have an environment reflective of the national mission for education in Wales and future curriculum.
- Working towards ensuring that all pupils within the Vale have every opportunity to attain the best possible outcomes. This ambition is achieved by ensuring that schools remain sustainable, reflects the needs of local communities and are equipped with the best possible learning environments.
- Contributing towards a healthier Wales by supporting sustainable transport strategies and providing additional sport facilities.
- Contributing towards a prosperous Wales by committing to working with Welsh Government on the 21st Century Schools Programme. The 21st Century Schools and Education Programme in the Vale of Glamorgan will drive greater social value while delivering on the Welsh Government's community benefits through its investment in education infrastructure and employment. Specifically, it will increase contributions to education, training and skills across the Vale and the region and provide opportunities for local tradespeople and to use local resources, wherever possible.
- Delivering rigorous consultation with open communication channels and numerous opportunities for stakeholders to engage throughout the process.
- Ensuring that schools are of the right size, in the right places and serving the educational needs of their local communities as part of the school organisation process.

4. Resources and Legal Considerations

Financial

4.1 There are no direct financial implications as a result of this report.

Employment

4.2 There are no direct employment implications as a result of this report. However, it should be noted that the Barry Secondary Learning Communities projects have resulted in 58 new full-time jobs, 26 apprenticeships and 30 work experience placements.

Legal (Including Equalities)

- 4.3** As part of the tendering process, contractors are required to submit targets for community benefits. These are then written into contractual arrangements and are subject to financial penalties for non-delivery.

5. Background Papers

No background papers.

Over the last 18 months we have delivered...

Ysgolion a Cholegau yr 21ain Ganrif
21st Century Schools and Colleges



Ariennir gan
Lywodraeth Cymru
Funded by
Welsh Government



400
Hours of school
STEM engagements
2,800
Pupil interactions

26
Apprenticeships

30
Work
experience
placements

58
New full-
time jobs

9
Community initiatives
supported

80%
Construction spend
within Wales =
£18.7m

87%
Workforce
from Wales

99%
Waste diverted
from landfill



For more information, email 21stcenturyschools@valeofglamorgan.gov.uk or visit www.valeofglamorgan.gov.uk/21st-Century-Schools



21st Century Schools – Community Benefits

Introduction

What is the 21st Century Schools programme?

- It is a unique collaboration between Welsh Government, the Welsh Local Government Association (WLGA), local authorities, colleges and diocesan authorities investing in the educational estate in Wales.
- 8 schools within the Vale of Glamorgan were refurbished or provided with new buildings under Band A of the programme.
- More than £167 million is proposed to be invested in schools across the Vale of Glamorgan between April 2019 and March 2024.



Scheme	School	Project Type	Value (£ million)	Contractor
Barry Secondary Learning Communities	Ysgol Gymraeg Bro Morgannwg	Refurbishment and expansion	£21.5	ISG construction
	Whitmore High School	New build	£30.5	Morgan Sindall
	Pencoedtre High School	New build	£34.7	Bouygues UK
Western Vale Primaries	St David's CIW Primary	New build and expansion	£14.485	ISG construction
	St Nicholas CIW Primary	New build and expansion		
	Llancarfan Primary	New build and expansion		
Ysgol Sant Baruc		New build and expansion	£7.895	
Cowbridge Primary Provision (phase i)		New build	£5	
Additional Learning Needs	Ysgol Y Deri	New build	£11	
	Centre for Learning & Well-being	New build	£4.4	
Penarth Nursery & Primary Provision		New build	£5.5	
3-19 Faith School*		New build	£31.9	

Contractors have been appointed for the BSLC and WVP schemes and community benefits are being delivered alongside construction works. The new and refurbished buildings are due to be completed between Autumn 2021 – Winter 2022.

*MIM or Band C scheme

Ysgol Gymraeg Bro Morgannwg



Whitmore High School



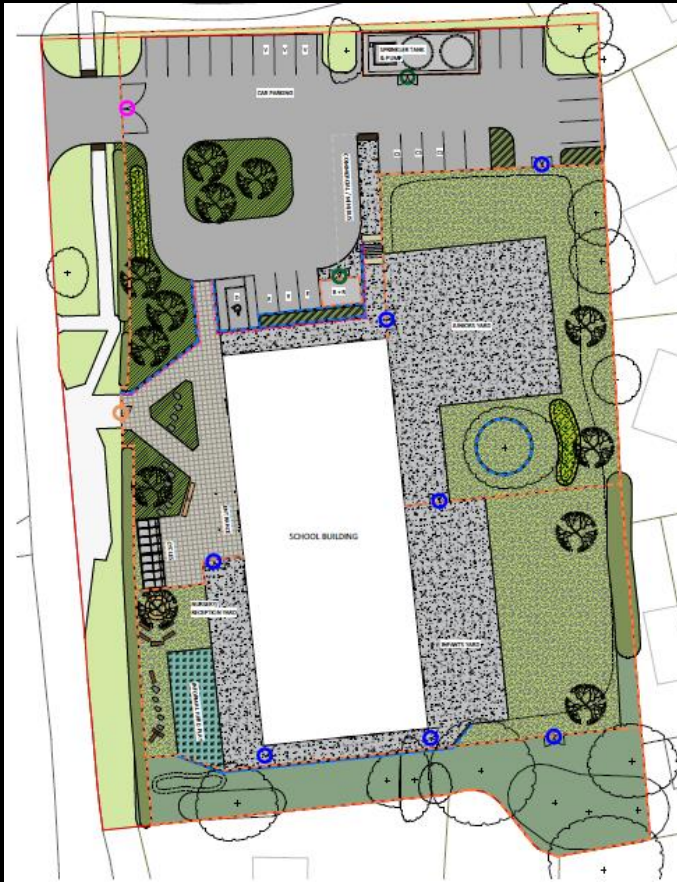
Pencoedtre High School



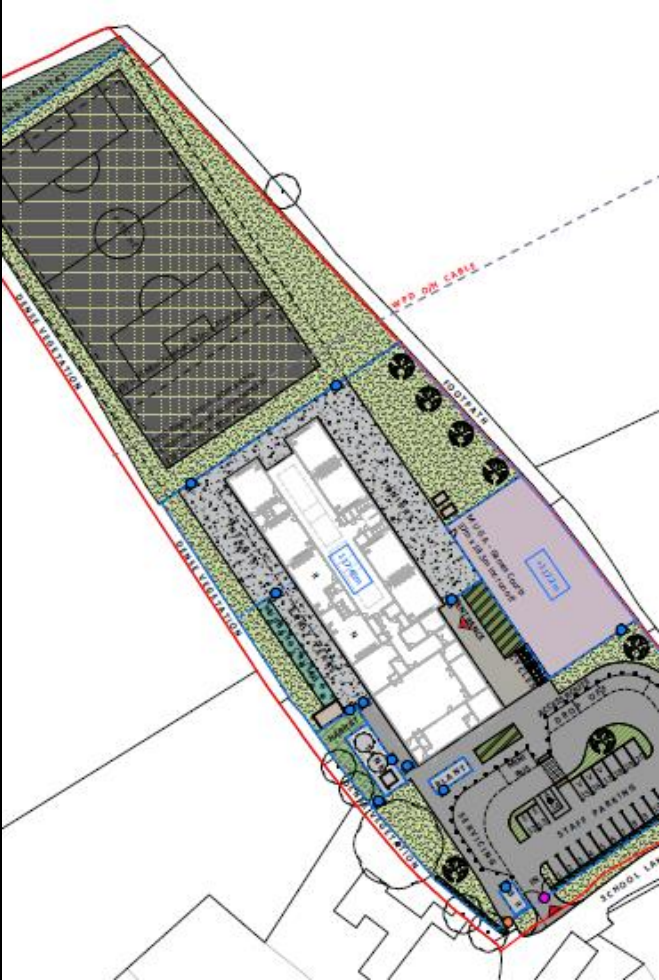
Llancarfan Primary School



St David's CIW Primary School

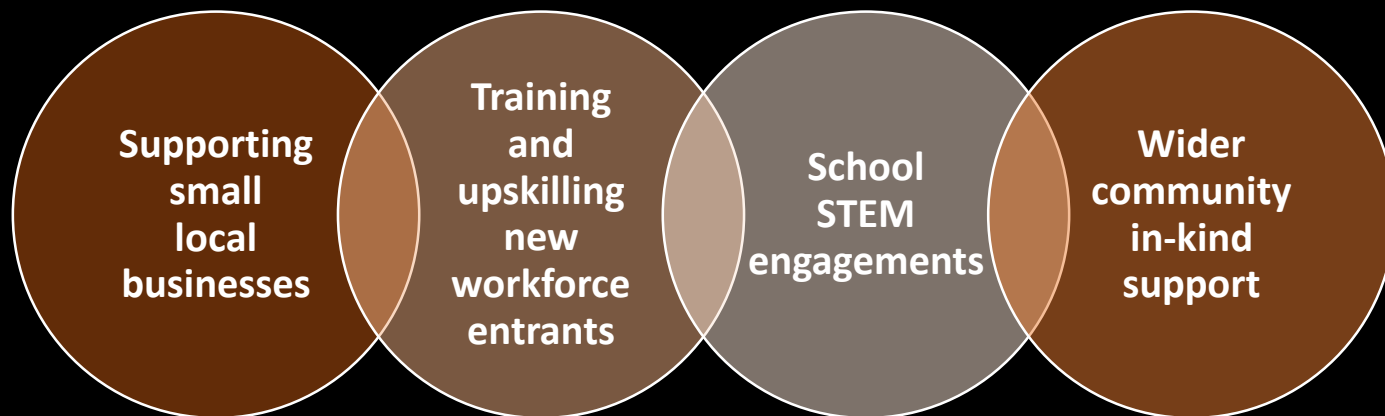


St Nicholas CIW Primary School



What are community benefits and why do we deliver them?

- The Council's 21st Century Schools programme aims to provide long-term social, environmental and economic benefits to schools and the wider community.
- To achieve these wider programme aims, our appointed contractors are required to deliver on a range of community benefits targets.
- The targets are set as part of the procurement process and are consistently higher than the minimum required by Welsh Government.
- Targets include...



A collaborative approach

- Hold monthly meetings with all the contractor community engagement officers;
- Hold joint supply chain and other events;
- Implement a standard work experience programme;
- Encourage healthy competition; and
- Hold quarterly steering group meetings with wider partners



Collaborative approach feedback:

- *'There is a clear trust and bond being developed by all parties which can only benefit the project and community as a whole. This simply would not have happened had it not been driven from the early concept stages of the project.'*
Steve Langford, Project Director, Morgan Sindall.

Achievements to date

Summary figures

Between January 2019 – September 2020, the Barry Secondary Learning Communities (BSLC) project has delivered:

- Over **5,000** person weeks of New Entrant Jobs;
- Over **3,000** person weeks of New Entrant Training;
- Nearly **400** hours of school STEM engagements;
 - **4** supply chain engagement events;
- **80%** construction spend within Wales (average);
 - **76%** of subcontractors based in Wales; and
- **50%** of the workforce coming from the local postcode

The BSLC project procurement received “highly commended” in the Wales Go Awards, Social Value category. It was recognised and short listed for the Welsh Government and UK Go Awards in Social Value.

Work experience, training and upskilling

The main contractors, construction consultants AECOM, and supply chain partners are engaged in apprenticeships and work experience requirements to enable training across a range of specialties.

- Council's Communities 4 Work
- Jobcentre Plus
- Y Prentis
- CITB 'Career Changers' programme
- 'School of Hard Knocks' programme



Work experience feedback:

- *'Through our collaboration with the 21st Century Schools Programme, AECOM has provided a wide range of work experience for eleven individuals. The programme has delivered measurable, tangible success stories, one individual has gone on to join an apprentice scheme with a main contractor in South Wales and another, who was long term unemployed, has entered full-time employment following the work experience.'* Conna Ryan, Project Manager, AECOM.
- *'ISG have given me many opportunities through the Career Changers programme to try new things in the industry and have helped build my confidence not only on site but in day to day life. I am currently gaining experience in the use of a telehandler with the ambition to be a fully qualified driver by the end of the project.'* Lisa Snape, Career Changers participant.

School engagements

Assemblies;

- Building project updates;
- Site safety information; and
- Career opportunities in construction.

Pupils will also have opportunities to take part in;

- Site visits;
- The construction ambassadors programme; and
- National competitions promoting STEM in construction.



School engagements during Covid-19

- ISG school health & safety app;
- Construction and ecology activities;
- Signs and care pack;
- Video site tours; and
- Virtual work experience



Covid-19 health & safety app

ISG

Our ground-breaking app is designed to:

- Keep everyone safe in and around our sites
- Help prevent the spread
- Promote best practice

This app will be updated as required to reflect any changes in UK government advice or new best practice

Scan the QR code to access:



How to scan a QR code:

1. Open the camera app from your device's home screen, control centre or lock screen.
2. Hold your device so that the QR code appears in the camera app's viewfinder. Your device will recognise the QR code and will show a notification.
3. Tap the notification to open the link associated with the QR code.

HELP PREVENT THE SPREAD

www.isgpc.com



Environmental and well-being enhancement

- Design and deliver BREEAM Excellent standard facilities (includes energy efficient buildings and enhancing habitats for wildlife);
- 90% diversion of waste from landfill;
- Nature and sporting facilities;
- 'Green wall' site hoarding competition; and
- Opportunities for pupils to get involved in landscaping, including tree planting and creating allotments.



Supply chain engagements and supporting social enterprises

- Joint supply chain event during the summer 2019
- Main contractors upskilling a number of sub-contractors
- Increased targets for shared contractors



Ysgol y Deri, catering project:

- Site catering for the three BSLC projects
- Pupils will gain work experience
- Mobile canteen unit donation will enable this to be a sustainable enterprise



Community projects and engagements

A range of in-kind donations and voluntary support is available to projects and could include help with painting a community space, procurement advice, or training opportunities for service users.

Apply for support at: www.valeofglamorgan.gov.uk/21st-Century-Schools



Litter pick

Open evenings

Living library

Gardening projects

Community newsletters

Christmas trees to schools

Hampers to local food banks

Community engagement feedback:

- *'The responsibility the Vale of Glamorgan claims in supporting its communities socially, economically and environmentally has been clearly evidenced and shared throughout the procurement process. Policies were clearly set out and implemented to provide ethical, sustainable and economically sound solutions for the community. As a responsible and committed employer dedicated to benefitting the lives of everyday people, Bouygues UK has found a great deal of these values in common during the course of its work with the 21st Century Schools team.'* Leigh Hughes, CSR Director, Bouygues UK.



Thank you,
any questions?

21stcenturyschools@valeofglamorgan.gov.uk

01446 709 828