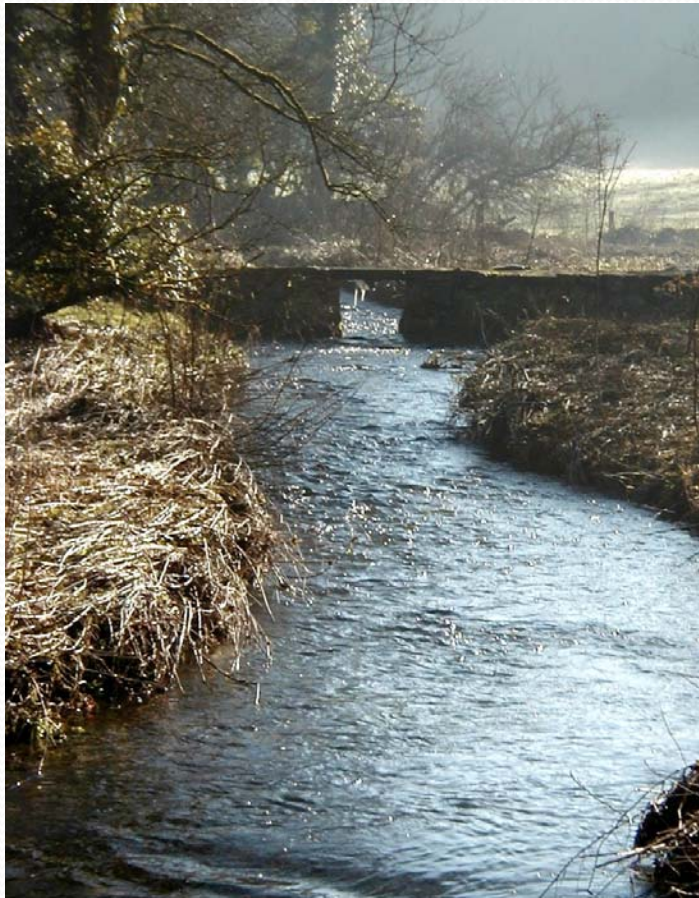


ROWIP Draft Statement of Actions

Gwyn Teague
Public Rights of Way Officer

Current Stage of Development



- Preparation of draft
 - Aims updated by reference to workshop findings and assessment
 - LAF working group constituted and met to review action
 - Actions redrafted following review

Management

	Action
Legal work	1 Continuously review the Definitive Map and Statement
	2 Develop a prioritisation scheme for the determination of definitive map modification order applications
	3 Develop and implement an approach to address catalogued anomalies
	4 Administer public path order applications in a timely manner
	5 Review guidance within application packs associated with changing and recording legal rights.
	6 Improve registers of applications and processes for recording limitations
	7 Take opportunities to improve the PROW network via s106 contributions associated with development.
	8 Protect the network having regard to proportionality and protocols included in relevant published guidance.
	9 Develop guidance describing typical network protection issues and protocols for remedies*
	10 Adapt procedures to account for changes in statute

Management

	Action
Maintenance	11 Maintain the network having regard to ROWIP prioritisation guidelines and to protocols included in relevant published guidance.
	12 Develop guidance describing typical network maintenance issues including protocols for remedies*
	13 Promote least restrictive access principles and agree new furniture to BS5709 standard
	14 Make use of appropriate ICT innovations, including spatial datasets, for ongoing maintenance management.
	15 Carry out an annual clearance programme for priority routes and review the programme annually.
	16 Carry out a survey each year of that provides data on network condition and ease of use of paths *
	17 Support public access along the Wales Coastal Path including assuring continuity in the light of erosion events or potential erosion events..

Management

	Action	
Resourcing	18	Extend partnership working with community councils and user groups.
	19	Take advantage of funding and income generation opportunities to enable implementation of the ROWIP
	20	Identify specific staffing needs to implement the ROWIP
	21	Explore interdepartmental working opportunities

Management

	Action
Volunteers	22 Support voluntary efforts for the maintenance and improvement of the network
	23 Engage with stakeholders via user meetings and community forums
	24 Work with the LAF to review ROWIP progress and opportunities.
	25 Work with the LAF to identify better ways of engaging stakeholders and volunteers

Stakeholders

	Action	
Range of Users	26	Have regard to least restrictive access principles when undertaking maintenance or improvement works.*
	27	Develop a coherent network of multi-user routes serving the County.
	28	Engage with representative groups to explore opportunities to upgrade the network for people with disabilities and less mobile users.
	29	Work with cycling interest groups to investigate the creation of cross Vale cycling routes and links
	30	Work with equestrian groups to investigate a more coherent network of suitable routes, including potential upgrading of existing routes to bridleway status.
	31	Work with motorized vehicle interest groups to look at appropriate opportunities for safe driving routes within the Vale.
	32	Exploit opportunities for the improvement of wellbeing having regard to the seven wellbeing goals

Stakeholders

	Action	
Landowners	33	Establish better liaison with landowners and representatives to ensure best practice, sharing of information and practical management advice.
	34	Work with landowners to investigate a more coherent network of routes especially for horse riders

Stakeholders

	Action	
Interest bodies	35	Improve partnership working with Community Councils.
	36	Extend partnership working with neighbouring Authorities, in particular with regard to area statements and the sustainable management of natural resources.

Information

	Action
Off-site	37 Circulate promotional material according to available resources
	38 Improve information available on the Council website, including legislation and PROW management.
	39 Maintain a working map and publish via webmapping
	40 Work with LAF to develop criteria for endorsement of promoted routes
	41 Create promotional material specifically for less able users.

Information

	Action	
On-site	37	Improve roadside signage
	38	Maintain interpretation resources at appropriate locations
	39	Provide training and review system for waymarking using volunteers

Next steps



- Present amended aims to LAF
- Produce draft for Cabinet
- Consultation on draft