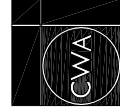


**2021/00423/FUL and 2022/00424/CAC**

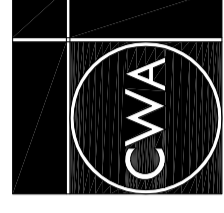
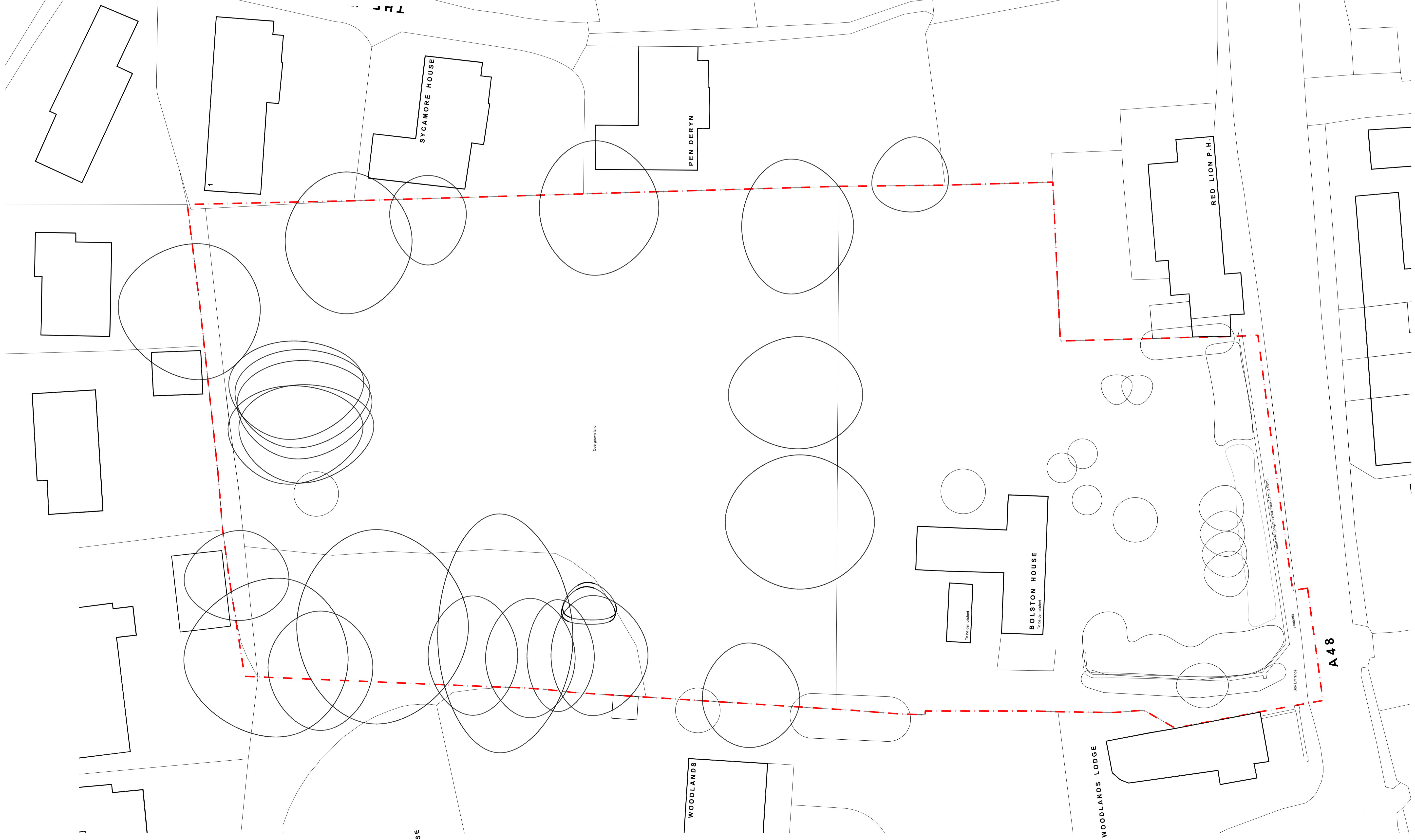


**C. W. ARCHITECTS Ltd**  
 Grosvenor House, 8 Park Grove, Cardiff CF10 3BN  
 Tel : +44 (0)2920 223 123 Fax : +44 (0)2920 38897 E-Mail: [office@cwaarchitects.co.uk](mailto:office@cwaarchitects.co.uk)

Project Name :	Bolston House, Bonvilston
Project Ref :	SP612
Drawing Title :	Site Location Plan
Drawing Number :	P100
Revision:	PLANNING
Drawn by :	rb
Date :	Mar 2021
Scale :	1:1250 @ A4



2021/00423/FUL and 2022/00424/CAC



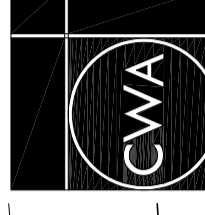
**C. W. ARCHITECTS Ltd**  
 Grosvenor House, 8 Park Grove, Cardiff CF10 3BN  
 Tel: +44 (0)2920 22123 Fax: +44 (0)2920 38387 E-Mail: [office@gcwarchitects.co.uk](mailto:office@gcwarchitects.co.uk)

Project Name :	Bolston House, Bonvilston
Project Ref. :	SP612
Drawing Title :	Existing Site Plan
Drawing Number :	P01
Scale :	1:250 @ A1
Revision:	PLANNING
Drawn by :	rb
Date:	Mar 2021





REVA 10.03.22 - Access road amended following Highway comments  
 Sub station within brick enclosure added  
 Bat roost and herpetofauna hibernacula added  
 Refuse store for flats added  
 Refuse collection point relocated  
 Ground floor plots updated to reflect amended floor plans

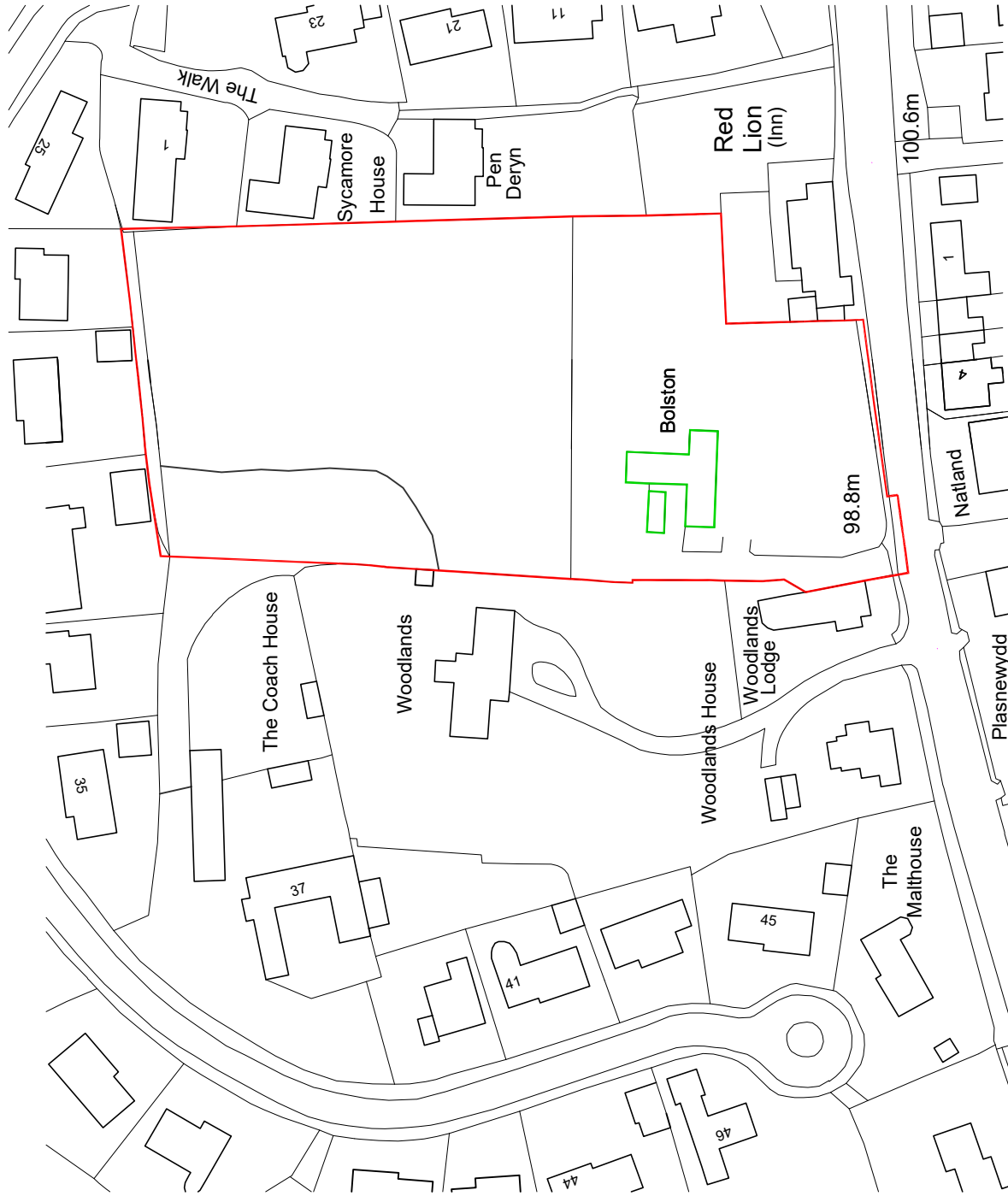


**C. W. ARCHITECTS LTD**  
 Crosswell Road, 8 Park Grove, Cardiff CF10 3BN  
 Tel: +44 (0)1222 321213 Fax: +44 (0)1222 383897 E-Mail: [info@cwanarchitects.co.uk](mailto:info@cwanarchitects.co.uk)

Project Name: **Bolston House, Bonwlston**  
 Project Ref: **SP612**

Drawing Title: **Proposed Site Plan**  
 Drawing Number: **P02**

Revision: **A** Drawn by: **tb** Date: **Nov 2021**



**2021/00423/FUL and 2022/00424/  
CAC**



**C. W. ARCHITECTS Ltd**  
Grosvenor House, 8 Park Grove, Cardiff CF10 3BN  
Tel : +44 (0)2920 223 123 Fax : +44 (0)2920 388397 E-Mail: [office@cwaarchitects.co.uk](mailto:office@cwaarchitects.co.uk)

Project Name :	Bolston House, Bonvilston
Project Ref :	SP612
Drawing Title :	Demolitions Plan
Drawing Number :	P101
Scale :	1:1250 @ A4
Revision:	PLANNING
Drawn by :	rb
Date :	Mar 2021



**MATERIAL KEY**

1. Bradstone Keinton Stone or similar
2. Facing brickwork (stock)
3. Brick arches / quoins / plinths
4. Cement fibre riven edge slate
5. Black cladding
6. Dark coloured window and door frames with clear double glazing
7. Timber entrance doors
8. Colour coated pergola
9. Terracotta chimney pots
10. Lead dormers
11. Dark coloured fascias, soffits and rainwater goods
12. Rooflights
13. Reconstituted stone window surrounds
14. Reconstituted stone cills
15. Reconstituted stone copings
16. Glass balustrade
17. Metal balustrade
18. Dark coloured garage doors
19. Render
20. Timber posts



**FRONT ELEVATION (SOUTH FACING)**



**SIDE ELEVATION (WEST FACING)**

**2021/00423/FUL and 2022/00424/CAC**



**C. W. ARCHITECTS Ltd**  
 Grosvenor House, 8 Park Grove, Cardiff CF10 3BN  
 Tel : +44 (0)2920 223123 Fax : +44 (0)2920 388367 E-Mail office@cwarehouse.co.uk

Project Name : Bolston House, Bonvilston  
 Project Ref : SP612

Drawing Title : PLOT ONE - Proposed Elevations\_1  
 Drawing Number : P06  
 Scale : 1:100 @ A3

Revision: PLANNING Drawn by: rb Date: Nov' 2021

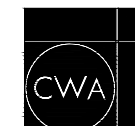


**MATERIAL KEY**

1. Bradstone Keinton Stone or similar
2. Facing brickwork (stock)
3. Brick arches / quoins / plinths
4. Cement fibre riven edge slate
5. Black cladding
6. Dark coloured window and door frames with clear double glazing
7. Timber entrance doors
8. Colour coated pergola
9. Terracotta chimney pots
10. Lead dormers
11. Dark coloured fascias, soffits and rainwater goods
12. Rooflights
13. Reconstituted stone window surrounds
14. Reconstituted stone cills
15. Reconstituted stone copings
16. Glass balustrade
17. Metal balustrade
18. Dark coloured garage doors
19. Render
20. Timber posts



2021/00423/FUL and 2022/00424/CAC



**C. W. ARCHITECTS Ltd**  
Grosvenor House, 8 Park Grove, Cardiff CF10 3BN  
Tel : +44 (0)2920 223123 Fax : +44 (0)2920 388367 E-Mail office@cwarchitects.co.uk

Project Name :	Bolston House, Bonvilston	
Project Ref :	SP612	
Drawing Title :	PLOT ONE - Proposed Elevations_2	Scale :
Drawing Number :	P07	1:100 @ A3
Revision:	PLANNING	Drawn by: rb
		Date: Nov' 2021

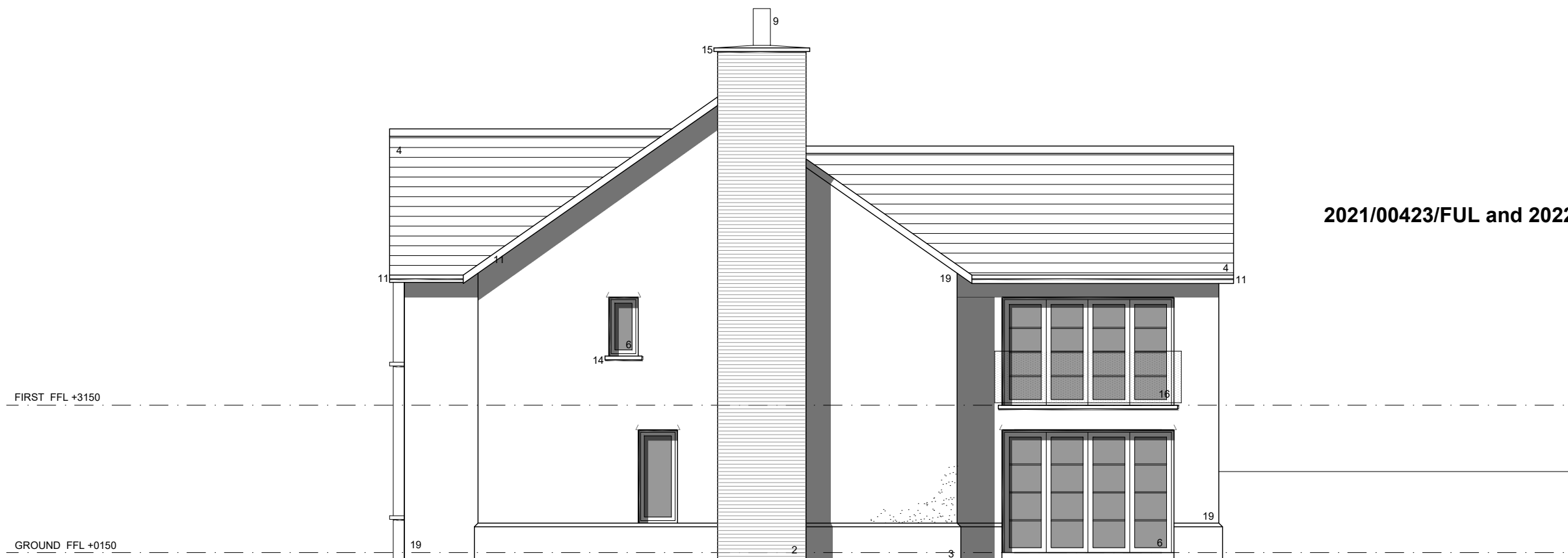




FRONT ELEVATION (WEST FACING)

**MATERIAL KEY**

1. Bradstone Keinton Stone or similar
2. Facing brickwork (stock)
3. Brick arches / quoins / plinths
4. Cement fibre riven edge slate
5. Black cladding
6. Dark coloured window and door frames with clear double glazing
7. Timber entrance doors
8. Colour coated pergola
9. Terracotta chimney pots
10. Lead dormers
11. Dark coloured fascias, soffits and rainwater goods
12. Rooflights
13. Reconstituted stone window surrounds
14. Reconstituted stone cills
15. Reconstituted stone copings
16. Glass balustrade
17. Metal balustrade
18. Dark coloured garage doors
19. Render
20. Timber posts



SIDE ELEVATION (SOUTH FACING)

2021/00423/FUL and 2022/00424/CAC

REV A 02.02.22 - South facing doors changed to crittall type doors



**C. W. ARCHITECTS Ltd**  
 Grosvenor House, 8 Park Grove, Cardiff CF10 3BN  
 Tel : +44 (0)2920 223123 Fax : +44 (0)2920 388367 E-Mail office@cwarchitects.co.uk

Project Name :	Bolston House, Bonvilston		
Project Ref :	SP612		
Drawing Title :	PLOT TWO - Proposed Elevations_1	Scale :	1:100 @ A3
Drawing Number :	P10		
Revision:	A	Drawn by: rb	Date: Nov' 2021

**MATERIAL KEY**

1. Bradstone Keinton Stone or similar
2. Facing brickwork (stock)
3. Brick arches / quoins / plinths
4. Cement fibre riven edge slate
5. Black cladding
6. Dark coloured window and door frames with clear double glazing
7. Timber entrance doors
8. Colour coated pergola
9. Terracotta chimney pots
10. Lead dormers
11. Dark coloured fascias, soffits and rainwater goods
12. Rooflights
13. Reconstituted stone window surrounds
14. Reconstituted stone cills
15. Reconstituted stone copings
16. Glass balustrade
17. Metal balustrade
18. Dark coloured garage doors
19. Render
20. Timber posts



**REAR ELEVATION (EAST FACING)**



**SIDE ELEVATION (NORTH FACING)**

**2021/00423/FUL and 2022/00424/CAC**

REV A 02.02.22 - Doors changed to crittall type doors on rear elevation  
Kitchen window omitted; side door and canopy relocated



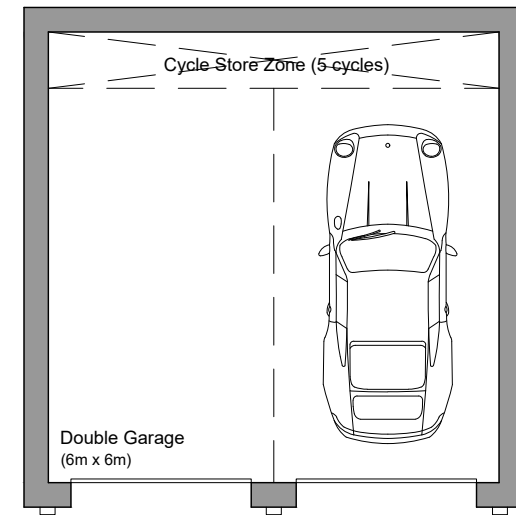
**C. W. ARCHITECTS Ltd**  
Grosvenor House, 8 Park Grove, Cardiff CF10 3BN  
Tel : +44 (0)2920 223123 Fax : +44 (0)2920 388367 E-Mail : office@cwarchitects.co.uk

Project Name : Bolston House, Bonvilston	
Project Ref : SP612	
Drawing Title : PLOT TWO - Proposed Elevations_2	Scale : 1:100 @ A3
Drawing Number : P11	
Revision: A	Drawn by: rb Date: Nov' 2021

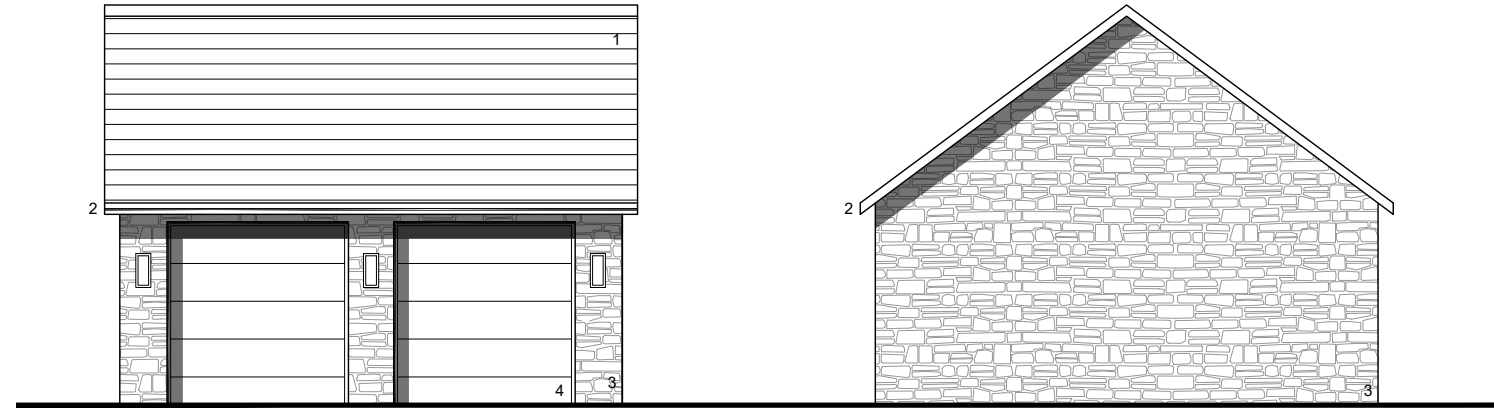




ROOF



GROUND FLOOR

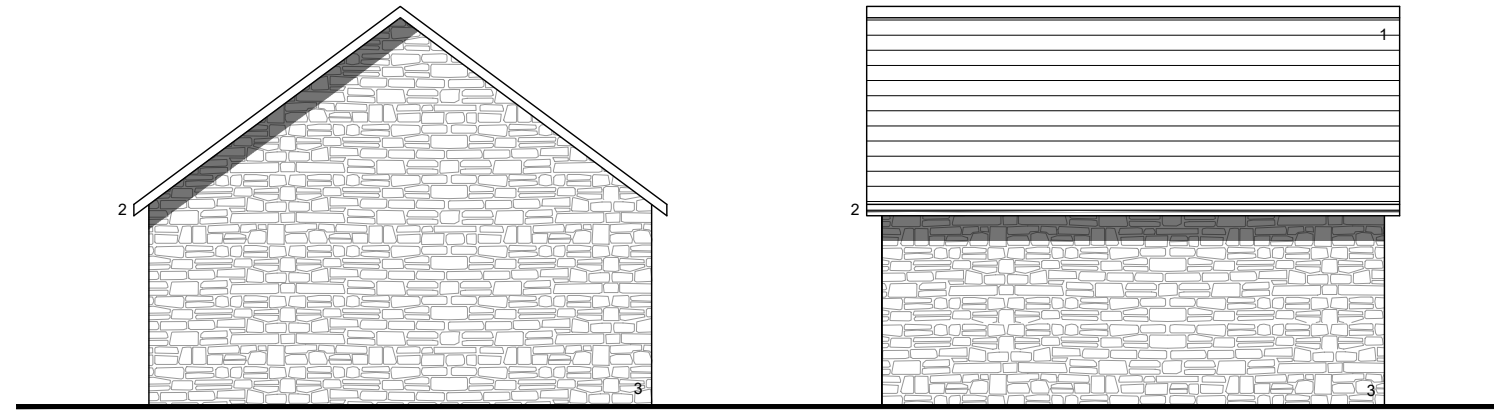


FRONT

SIDE

**MATERIAL KEY**

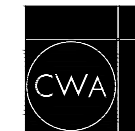
1. Cement fibre riven edge slate
2. Dark coloured fascias, soffits and rainwater good
3. Bradstone Keinton Stone or similar
4. Dark coloured garage doors



SIDE

REAR

2021/00423/FUL and 2022/00424/CAC



**C. W. ARCHITECTS Ltd**  
 Grosvenor House, 8 Park Grove, Cardiff CF10 3BN  
 Tel : +44 (0)2920 223123 Fax : +44 (0)2920 388367 E-Mail office@cwarchitects.co.uk

Project Name : Bolston House, Bonvilston  
 Project Ref : SP612

Drawing Title : PLOT TWO GARAGE - Plans + Elevations Scale :  
 Drawing Number : P48 1:100 @ A3

Revision: PLANNING Drawn by: rb Date: Nov' 2021



**FRONT ELEVATION (WEST FACING)**

**MATERIAL KEY**

1. Bradstone Keinton Stone or similar
2. Facing brickwork (stock)
3. Brick arches / quoins / plinths
4. Cement fibre riven edge slate
5. Black cladding
6. Dark coloured window and door frames with clear double glazing
7. Timber entrance doors
8. Colour coated pergola
9. Terracotta chimney pots
10. Lead dormers
11. Dark coloured fascias, soffits and rainwater goods
12. Rooflights
13. Reconstituted stone window surrounds
14. Reconstituted stone cills
15. Reconstituted stone copings
16. Glass balustrade
17. Metal balustrade
18. Dark coloured garage doors
19. Render
20. Timber posts

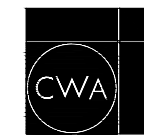


**SIDE ELEVATION (SOUTH FACING)**



**2021/00423/FUL and 2022/00424/CAC**

REV A 02.02.22 - Porch omitted; new side door to enlarged utility  
South facing doors to be crittall style



**C. W. ARCHITECTS Ltd**  
Grosvenor House, 8 Park Grove, Cardiff CF10 3BN  
Tel : +44 (0)2920 223123 Fax : +44 (0)2920 388367 E-Mail: office@cwarchitects.co.uk

Project Name : Bolston House, Bonvilston  
Project Ref : SP612

Drawing Title : PLOT THREE - Proposed Elevations\_1 Scale : 1:100 @ A3  
Drawing Number : P14

Revision: A Drawn by: rb Date: Nov' 2021



**MATERIAL KEY**

1. Bradstone Keinton Stone or similar
2. Facing brickwork (stock)
3. Brick arches / quoins / plinths
4. Cement fibre riven edge slate
5. Black cladding
6. Dark coloured window and door frames with clear double glazing
7. Timber entrance doors
8. Colour coated pergola
9. Terracotta chimney pots
10. Lead dormers
11. Dark coloured fascias, soffits and rainwater goods
12. Rooflights
13. Reconstituted stone window surrounds
14. Reconstituted stone cills
15. Reconstituted stone copings
16. Glass balustrade
17. Metal balustrade
18. Dark coloured garage doors
19. Render
20. Timber posts



**REAR ELEVATION (EAST FACING)**



**SIDE ELEVATION (NORTH FACING)**

REV A 02.02.22 - Doors to rear outshot to be crittall style  
 Juliette balconies and doors changed to windows (first floor rear elevation)  
 Kitchen window omitted; new side door to enlarged utility

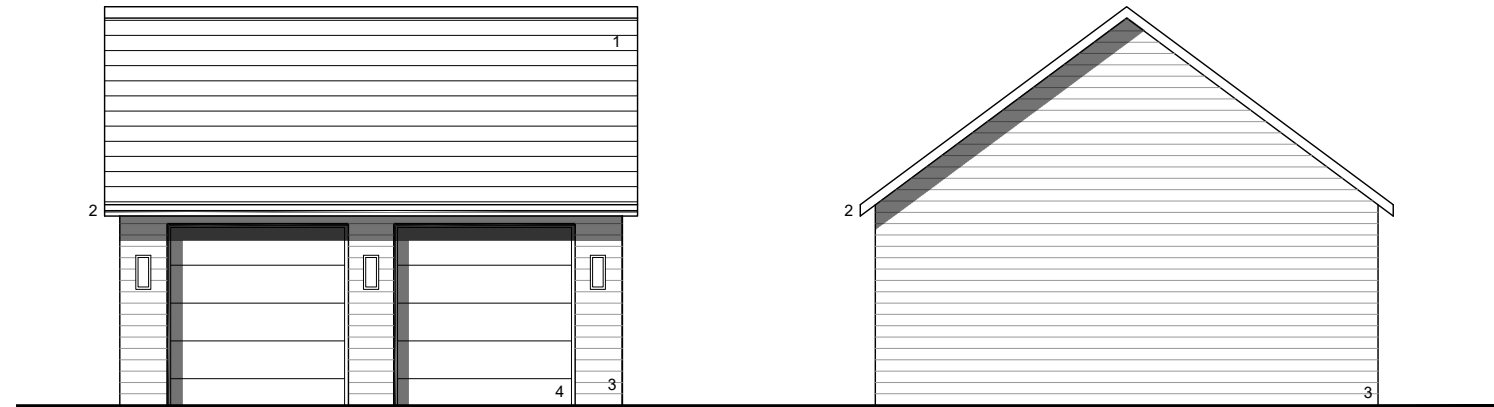


**C. W. ARCHITECTS Ltd**  
 Grosvenor House, 8 Park Grove, Cardiff CF10 3BN  
 Tel : +44 (0)2920 223123 Fax : +44 (0)2920 388367 E-Mail : office@cwarchitects.co.uk

Project Name : Bolston House, Bonvilston  
 Project Ref : SP612

Drawing Title : PLOT THREE - Proposed Elevations\_2  
 Drawing Number : P15  
 Scale : 1:100 @ A3

Revision: A Drawn by: rb Date: Nov' 2021



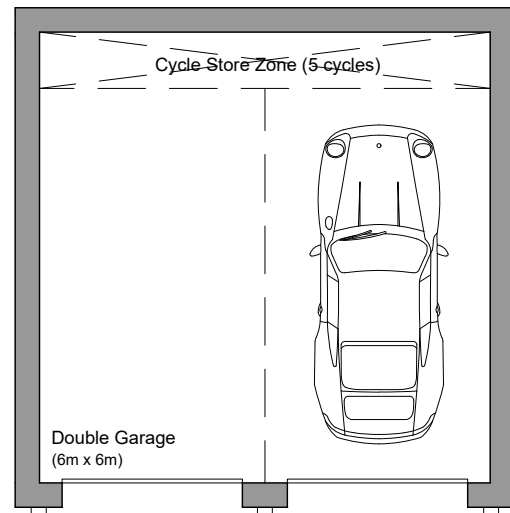
FRONT

SIDE

**MATERIAL KEY**

- 1. Cement fibre riven edge slate
- 2. Dark coloured fascias, soffits and rainwater good
- 3. Black cladding
- 4. Dark coloured garage doors

**ROOF**



GROUND FLOOR

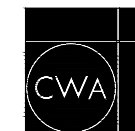


SIDE

REAR



2021/00423/FUL and 2022/00424/CAC



**C. W. ARCHITECTS Ltd**  
 Grosvenor House, 8 Park Grove, Cardiff CF10 3BN  
 Tel : +44 (0)2920 223123 Fax : +44 (0)2920 388367 E-Mail office@cwarchitects.co.uk

Project Name : Bolston House, Bonvilston  
 Project Ref : SP612

Drawing Title : PLOTS THREE + SEVEN GARAGE - Plans + Elevations  
 Drawing Number : P47  
 Scale : 1:100 @ A3

Revision: PLANNING Drawn by: rb Date: Nov' 2021

**MATERIAL KEY**

1. Bradstone Keinton Stone or similar
2. Facing brickwork (stock)
3. Brick arches / quoins / plinths
4. Cement fibre riven edge slate
5. Black cladding
6. Dark coloured window and door frames with clear double glazing
7. Timber entrance doors
8. Colour coated pergola
9. Terracotta chimney pots
10. Lead dormers
11. Dark coloured fascias, soffits and rainwater goods
12. Rooflights
13. Reconstituted stone window surrounds
14. Reconstituted stone cills
15. Reconstituted stone copings
16. Glass balustrade
17. Metal balustrade
18. Dark coloured garage doors
19. Render
20. Timber posts



2021/00423/FUL and 2022/00424/CAC

REV A 02.02.22 - South facing doors changed to crittall style

**CWA**  
**C. W. ARCHITECTS Ltd**  
 Grosvenor House, 8 Park Grove, Cardiff CF10 3BN  
 Tel: +44 (0)2920 223123 Fax: +44 (0)2920 388367 E-Mail: office@cwarchitects.co.uk

Project Name :	Bolston House, Bonvilston	
Project Ref :	SP612	
Drawing Title :	PLOT FOUR - Proposed Elevations_1	Scale :
Drawing Number :	P18	1:100 @ A3
Revision:	A	Drawn by: rb Date: Nov' 2021

**MATERIAL KEY**

1. Bradstone Keinton Stone or similar
2. Facing brickwork (stock)
3. Brick arches / quoins / plinths
4. Cement fibre riven edge slate
5. Black cladding
6. Dark coloured window and door frames with clear double glazing
7. Timber entrance doors
8. Colour coated pergola
9. Terracotta chimney pots
10. Lead dormers
11. Dark coloured fascias, soffits and rainwater goods
12. Rooflights
13. Reconstituted stone window surrounds
14. Reconstituted stone cills
15. Reconstituted stone copings
16. Glass balustrade
17. Metal balustrade
18. Dark coloured garage doors
19. Render
20. Timber posts



**REAR ELEVATION (EAST FACING)**



**SIDE ELEVATION (NORTH FACING)**

**2021/00423/FUL and 2022/00424/CAC**

REV A 02.02.22 - Doors to rear outshot changed to crittall style  
Kitchen window omitted; new side door to utility room



**C. W. ARCHITECTS Ltd**  
Grosvenor House, 8 Park Grove, Cardiff CF10 3BN  
Tel : +44 (0)2920 223123 Fax : +44 (0)2920 388367 E-Mail office@cwarchitects.co.uk

Project Name : Bolston House, Bonvilston  
Project Ref : SP612

Drawing Title : PLOT FOUR - Proposed Elevations\_2  
Drawing Number : P19  
Scale : 1:100 @ A3

Revision: A Drawn by: rb Date: Nov' 2021

**MATERIAL KEY**

- 1. Cement fibre riven edge slate
- 2. Dark coloured fascias, soffits and rainwater good
- 3. Bradstone Keinton Stone or similar
- 4. Dark coloured garage doors
- 5. Black cladding

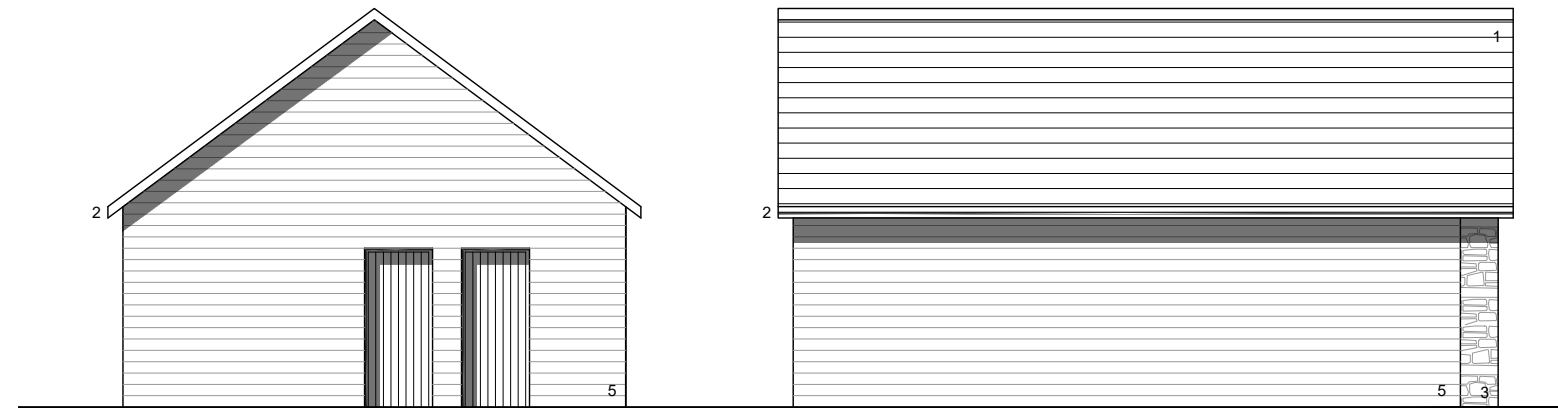
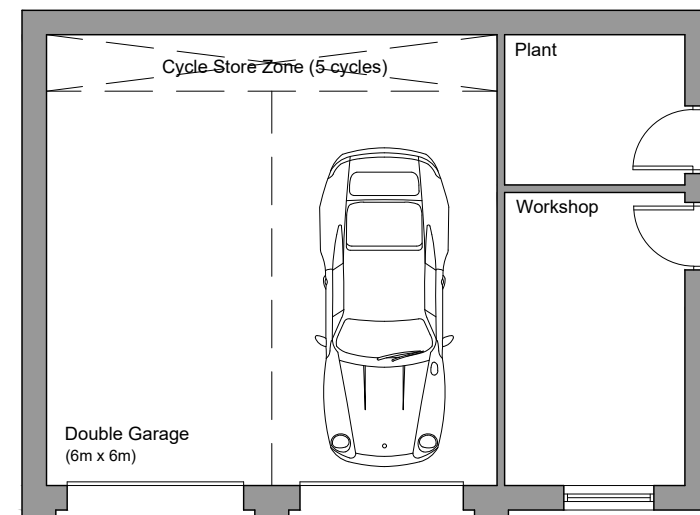


**ROOF**



**FRONT**

**SIDE**

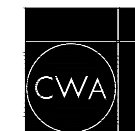


**SIDE**

**REAR**



**2021/00423/FUL and 2022/00424/CAC**



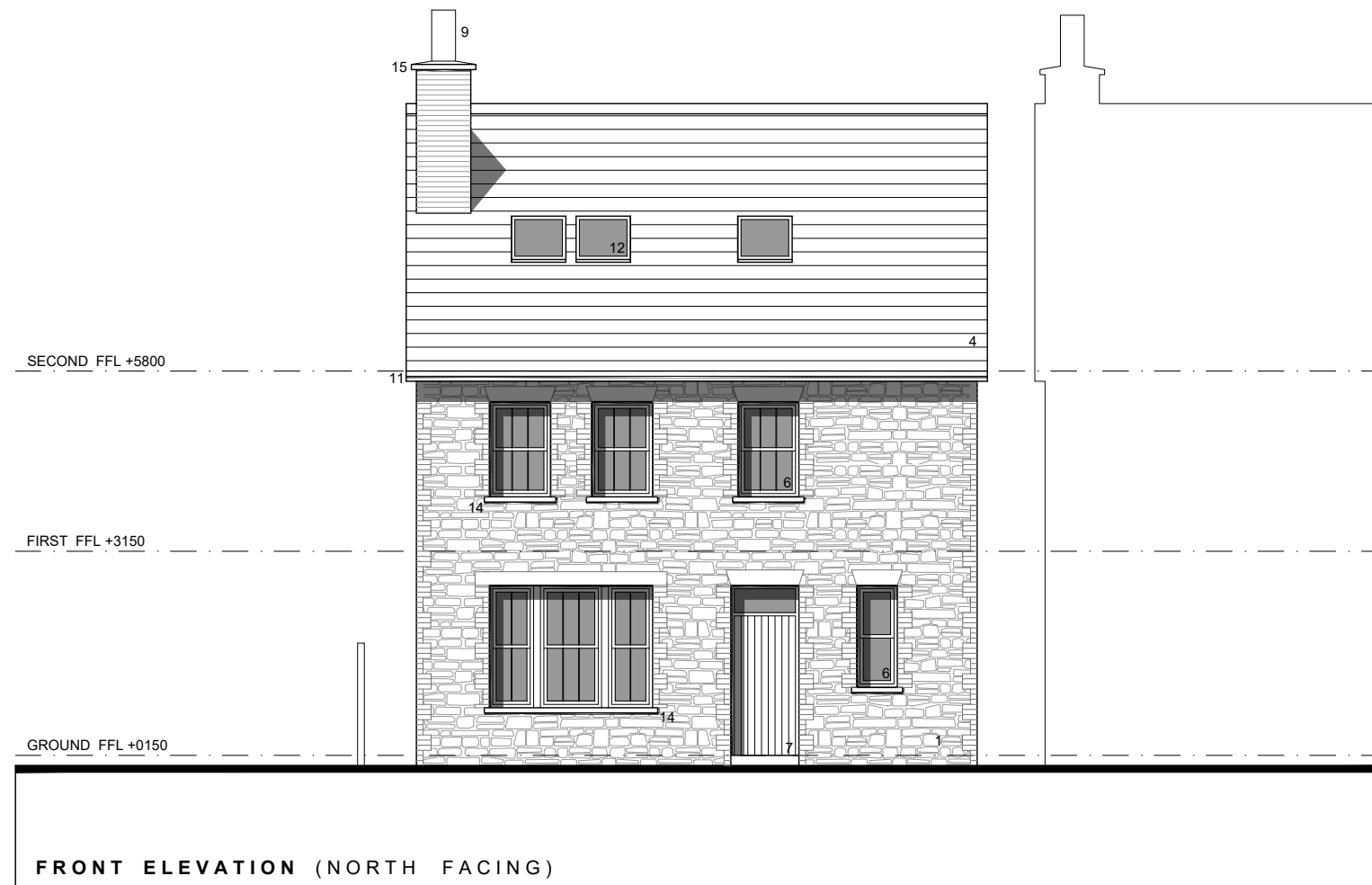
**C. W. ARCHITECTS Ltd**  
 Grosvenor House, 8 Park Grove, Cardiff CF10 3BN  
 Tel : +44 (0)2920 223123 Fax : +44 (0)2920 388367 E-Mail office@cwarchitects.co.uk

Project Name : Bolston House, Bonvilston  
 Project Ref : SP612

Drawing Title : PLOT FOUR GARAGE - Plans + Elevations Scale : 1:100 @ A3  
 Drawing Number : P49

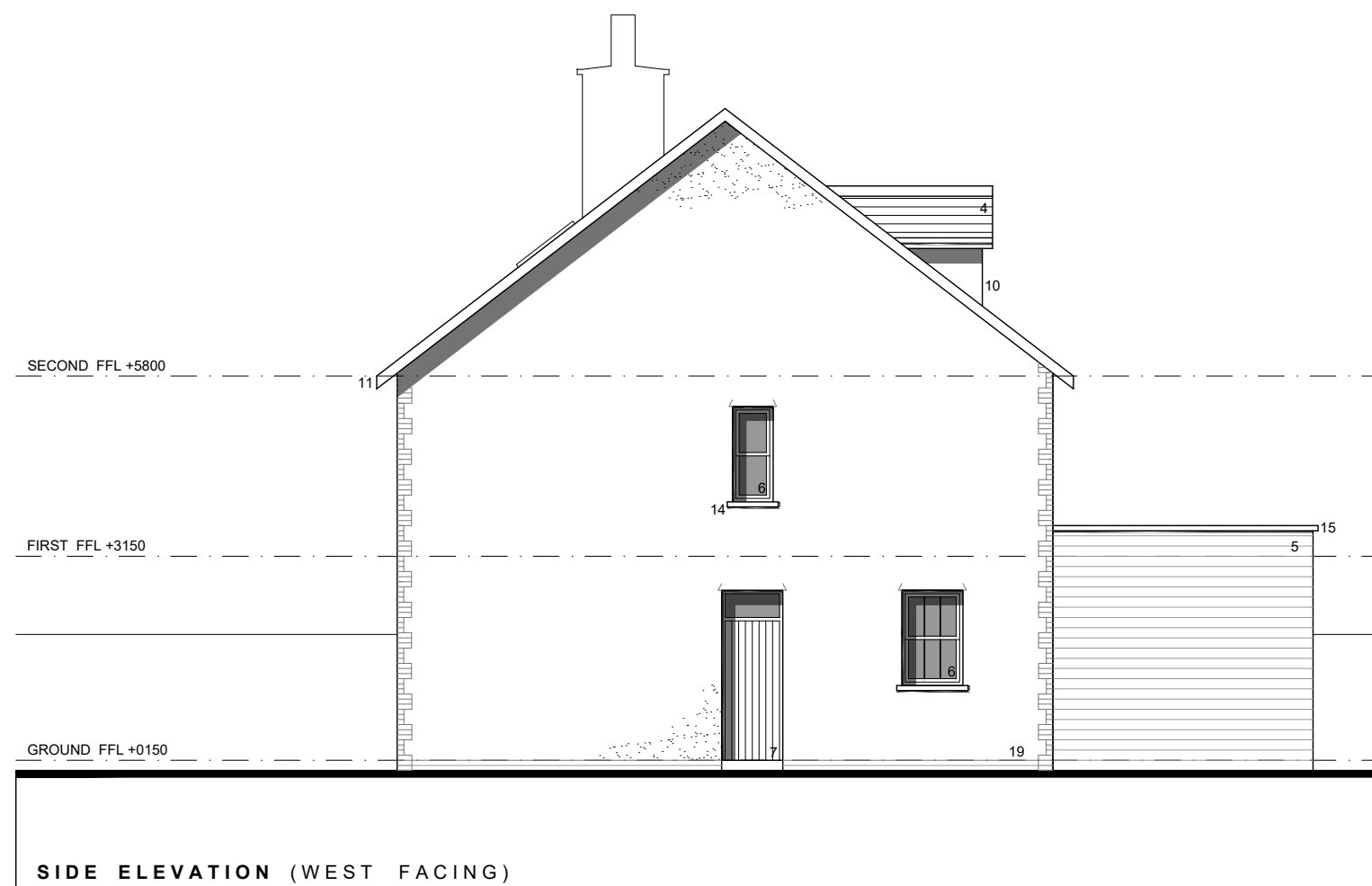
Revision: PLANNING Drawn by: rb Date: Nov' 2021





**MATERIAL KEY**

1. Bradstone Keinton Stone or similar
2. Facing brickwork (stock)
3. Brick arches / quoins / plinths
4. Cement fibre riven edge slate
5. Black cladding
6. Dark coloured window and door frames with clear double glazing
7. Timber entrance doors
8. Colour coated pergola
9. Terracotta chimney pots
10. Lead dormers
11. Dark coloured fascias, soffits and rainwater goods
12. Rooflights
13. Reconstituted stone window surrounds
14. Reconstituted stone cills
15. Reconstituted stone copings
16. Glass balustrade
17. Metal balustrade
18. Dark coloured garage doors
19. Render
20. Timber posts



**2021/00423/FUL and 2022/00424/CAC**

REV A 11.02.22 Elevations amended to reflect floor plans

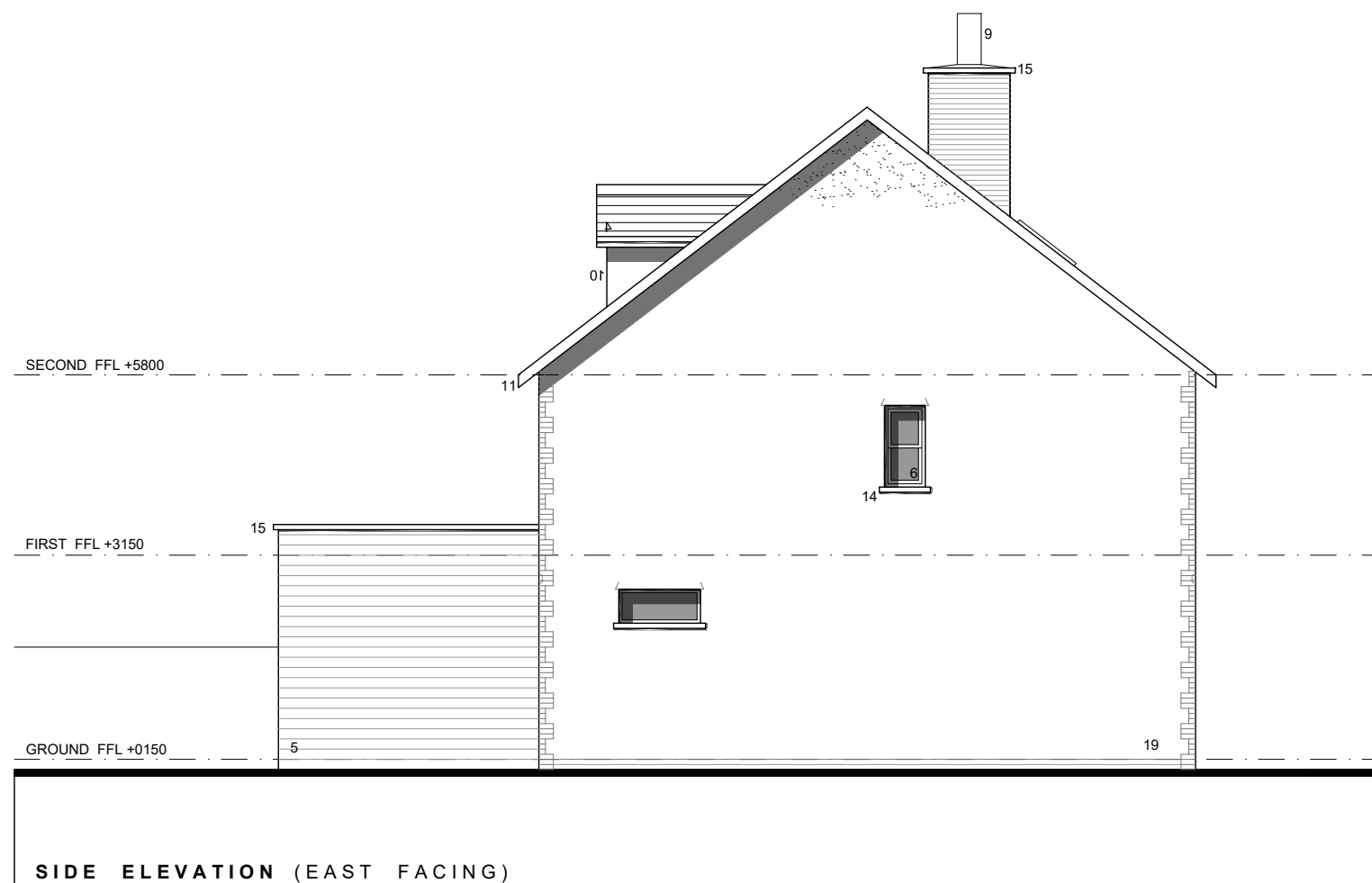


**C. W. ARCHITECTS Ltd**  
 Grosvenor House, 8 Park Grove, Cardiff CF10 3BN  
 Tel : +44 (0)2920 223123 Fax : +44 (0)2920 388367 E-Mail office@cwarchitects.co.uk

Project Name :	Bolston House, Bonvilston	
Project Ref :	SP612	
Drawing Title :	PLOT FIVE - Proposed Elevations_1	Scale :
Drawing Number :	P22	1:100 @ A3
Revision:	A	Drawn by: rb
		Date: Nov' 2021

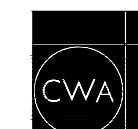
**MATERIAL KEY**

1. Bradstone Keinton Stone or similar
2. Facing brickwork (stock)
3. Brick arches / quoins / plinths
4. Cement fibre riven edge slate
5. Black cladding
6. Dark coloured window and door frames with clear double glazing
7. Timber entrance doors
8. Colour coated pergola
9. Terracotta chimney pots
10. Lead dormers
11. Dark coloured fascias, soffits and rainwater goods
12. Rooflights
13. Reconstituted stone window surrounds
14. Reconstituted stone cills
15. Reconstituted stone copings
16. Glass balustrade
17. Metal balustrade
18. Dark coloured garage doors
19. Render
20. Timber posts



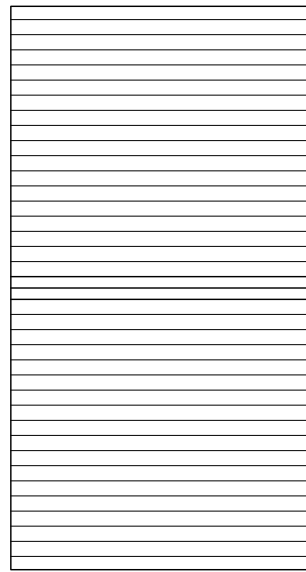
**2021/00423/FUL and 2022/00424/CAC**

REV A 11.02.22 Roof amended to reflect floor plans  
Bi-folding doors changed to crittall style

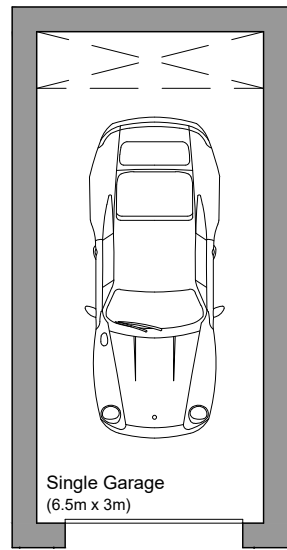


**C. W. ARCHITECTS Ltd**  
Grosvenor House, 8 Park Grove, Cardiff CF10 3BN  
Tel : +44 (0)2920 223123 Fax : +44 (0)2920 388367 E-Mail office@cwarchitects.co.uk

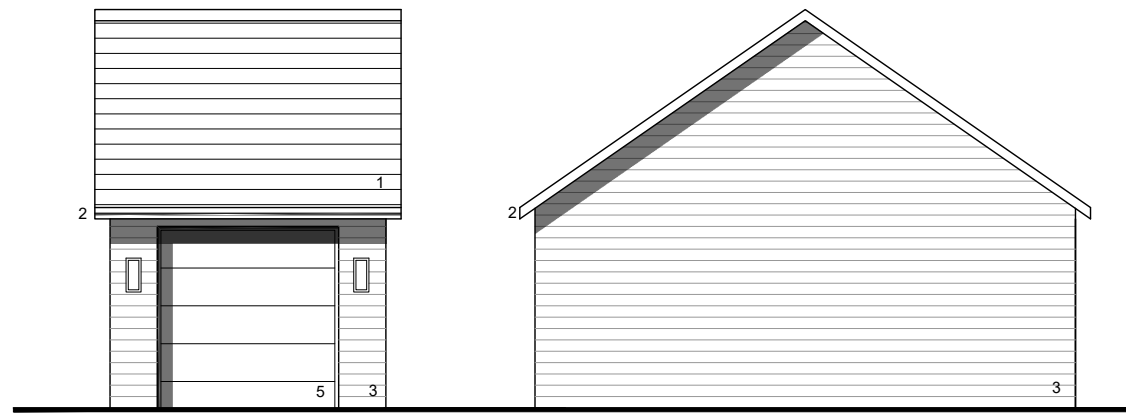
Project Name :	Bolston House, Bonvilston	
Project Ref :	SP612	
Drawing Title :	PLOT FIVE - Proposed Elevations_2	Scale :
Drawing Number :	P23	1:100 @ A3
Revision:	A	Drawn by: rb Date: Nov' 2021



ROOF



GROUND FLOOR

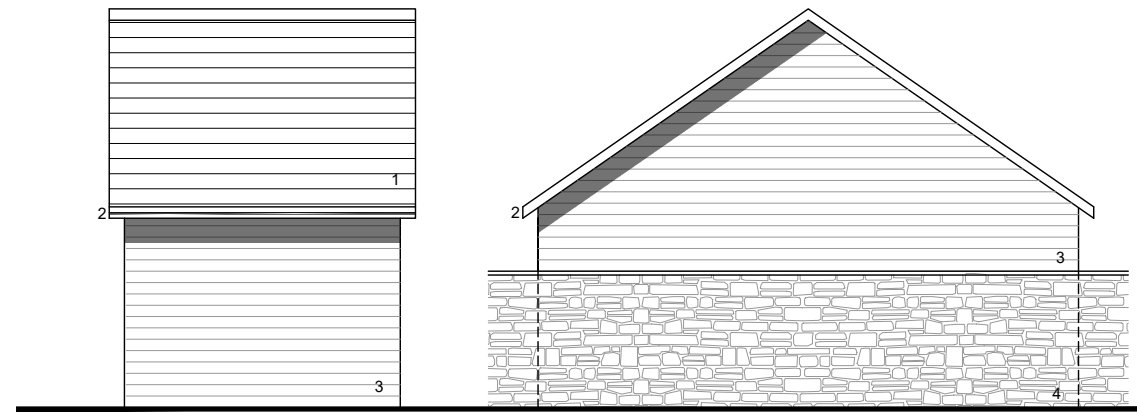


FRONT

SIDE

**MATERIAL KEY**

- 1. Cement fibre riven edge slate
- 2. Dark coloured fascias, soffits and rainwater good
- 3. Black cladding
- 4. Stone wall to Plot Four
- 5. Dark coloured garage doors

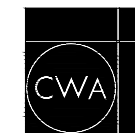


REAR

SIDE



2021/00423/FUL and 2022/00424/CAC



**C. W. ARCHITECTS Ltd**  
 Grosvenor House, 8 Park Grove, Cardiff CF10 3BN  
 Tel : +44 (0)2920 223123 Fax : +44 (0)2920 388367 E-Mail office@cwarchitects.co.uk

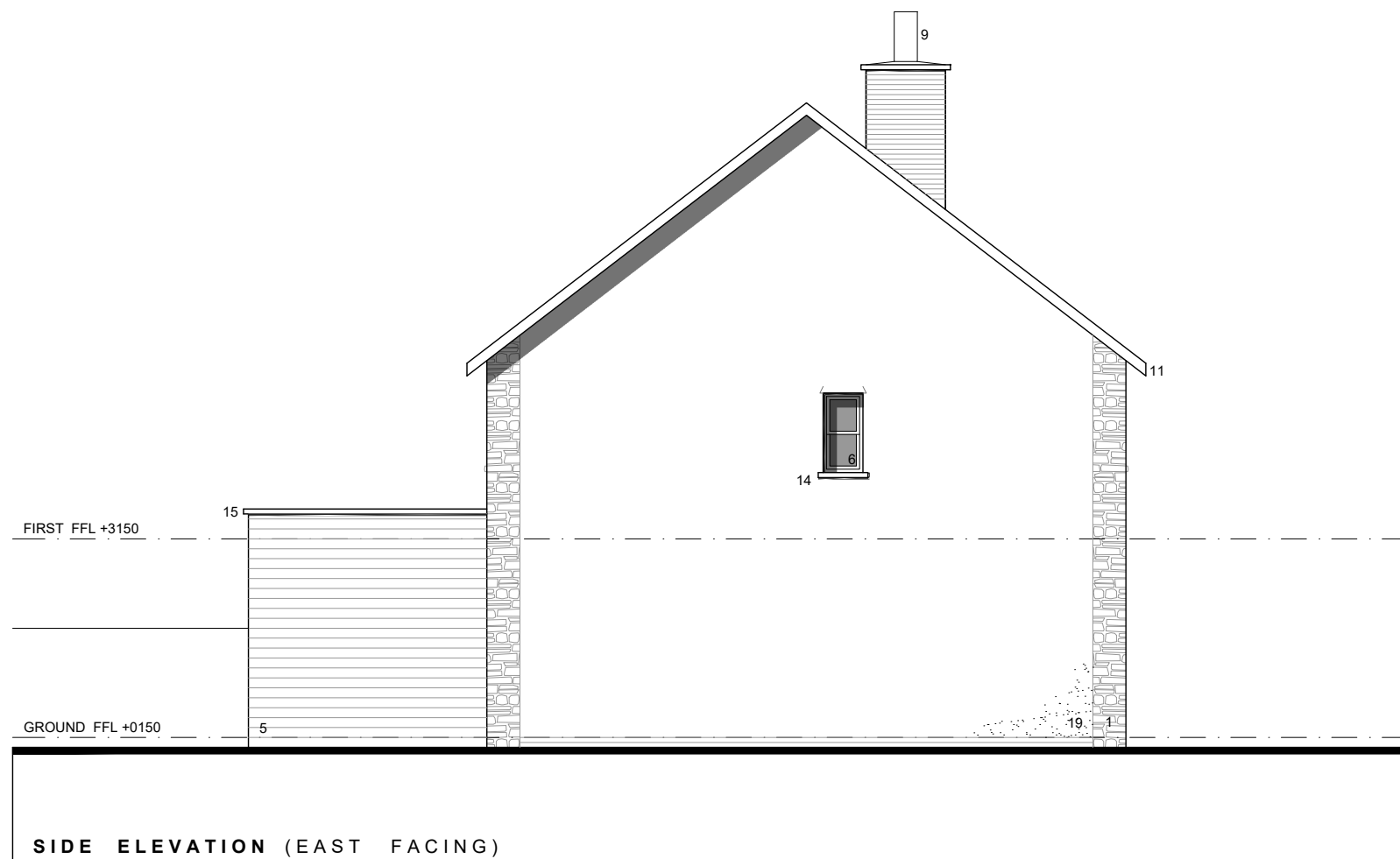
Project Name : Bolston House, Bonvilston  
 Project Ref : SP612

Drawing Title : PLOT FIVE GARAGE - Proposed Plans + Elevations  
 Drawing Number : P46  
 Scale : 1:100 @ A3

Revision: PLANNING Drawn by: rb Date: Nov' 2021

**MATERIAL KEY**

1. Bradstone Keinton Stone or similar
2. Facing brickwork (stock)
3. Brick arches / quoins / plinths
4. Cement fibre riven edge slate
5. Black cladding
6. Dark coloured window and door frames with clear double glazing
7. Timber entrance doors
8. Colour coated pergola
9. Terracotta chimney pots
10. Lead dormers
11. Dark coloured fascias, soffits and rainwater goods
12. Rooflights
13. Reconstituted stone window surrounds
14. Reconstituted stone cills
15. Reconstituted stone copings
16. Glass balustrade
17. Metal balustrade
18. Dark coloured garage doors
19. Render
20. Timber posts



**2021/00423/FUL and 2022/00424/CAC**

REV A 02.02.22 - Bi-folding doors changed to crittall style

**CWA**  
**C. W. ARCHITECTS Ltd**  
 Grosvenor House, 8 Park Grove, Cardiff CF10 3BN  
 Tel : +44 (0)2920 223123 Fax : +44 (0)2920 388367 E-Mail office@cwarchitects.co.uk

Project Name :	Bolston House, Bonvilston
Project Ref :	SP612

Drawing Title :	PLOT SIX - Proposed Elevations_2	Scale :	1:100 @ A3
Drawing Number :	P27		

Revision:	A	Drawn by:	rb	Date:	Nov' 2021
-----------	---	-----------	----	-------	-----------

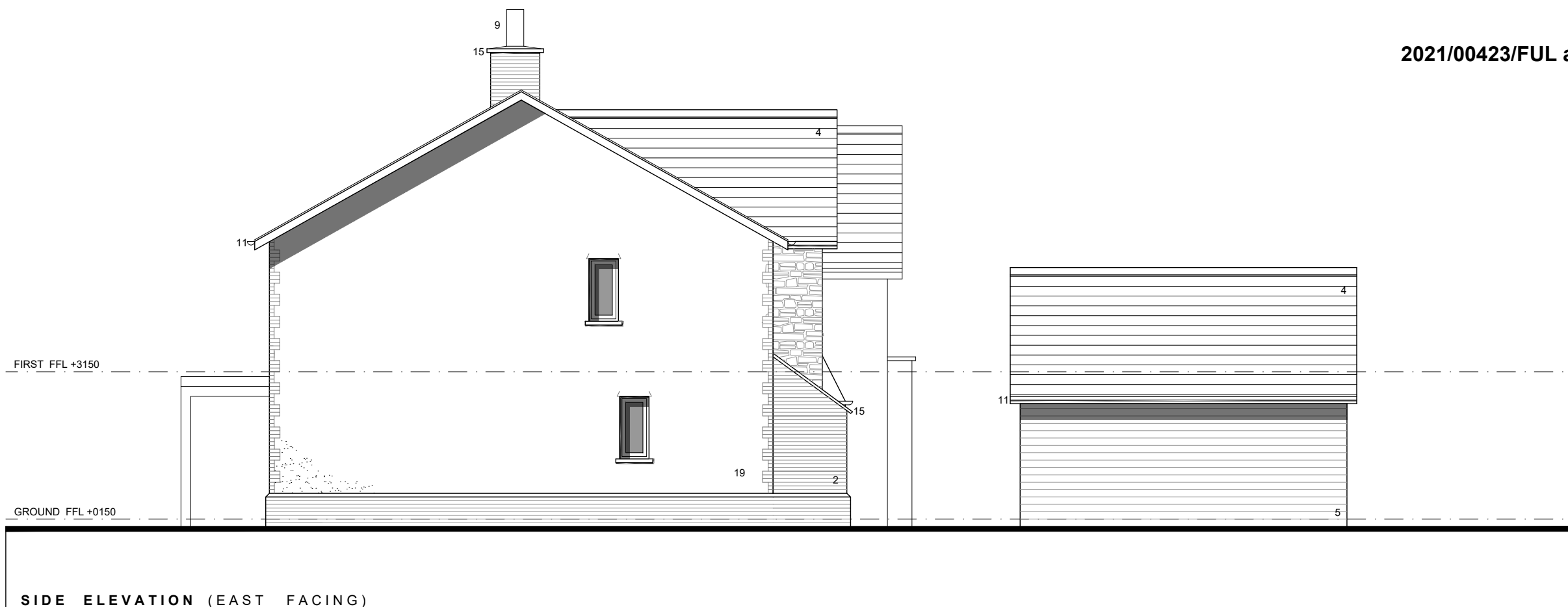
**MATERIAL KEY**

1. Bradstone Keinton Stone or similar
2. Facing brickwork (stock)
3. Brick arches / quoins / plinths
4. Cement fibre riven edge slate
5. Black cladding
6. Dark coloured window and door frames with clear double glazing
7. Timber entrance doors
8. Colour coated pergola
9. Terracotta chimney pots
10. Lead dormers
11. Dark coloured fascias, soffits and rainwater goods
12. Rooflights
13. Reconstituted stone window surrounds
14. Reconstituted stone cills
15. Reconstituted stone copings
16. Glass balustrade
17. Metal balustrade
18. Dark coloured garage doors
19. Render
20. Timber posts



**REAR ELEVATION (SOUTH FACING)**

**2021/00423/FUL and 2022/00424/CAC**



**SIDE ELEVATION (EAST FACING)**

REV A 02.02.22 - Large sliding doors changed to crittall style



**C. W. ARCHITECTS Ltd**  
 Grosvenor House, 8 Park Grove, Cardiff CF10 3BN  
 Tel : +44 (0)2920 223123 Fax : +44 (0)2920 388367 E-Mail office@cwarchitects.co.uk

Project Name : Bolston House, Bonvilston		Scale : 1:100 @ A3
Project Ref : SP612		
Drawing Title :	PLOT SEVEN - Proposed Elevations_2	
Drawing Number :	P33	
Revision:	A	Drawn by: rb
		Date: Nov' 2021



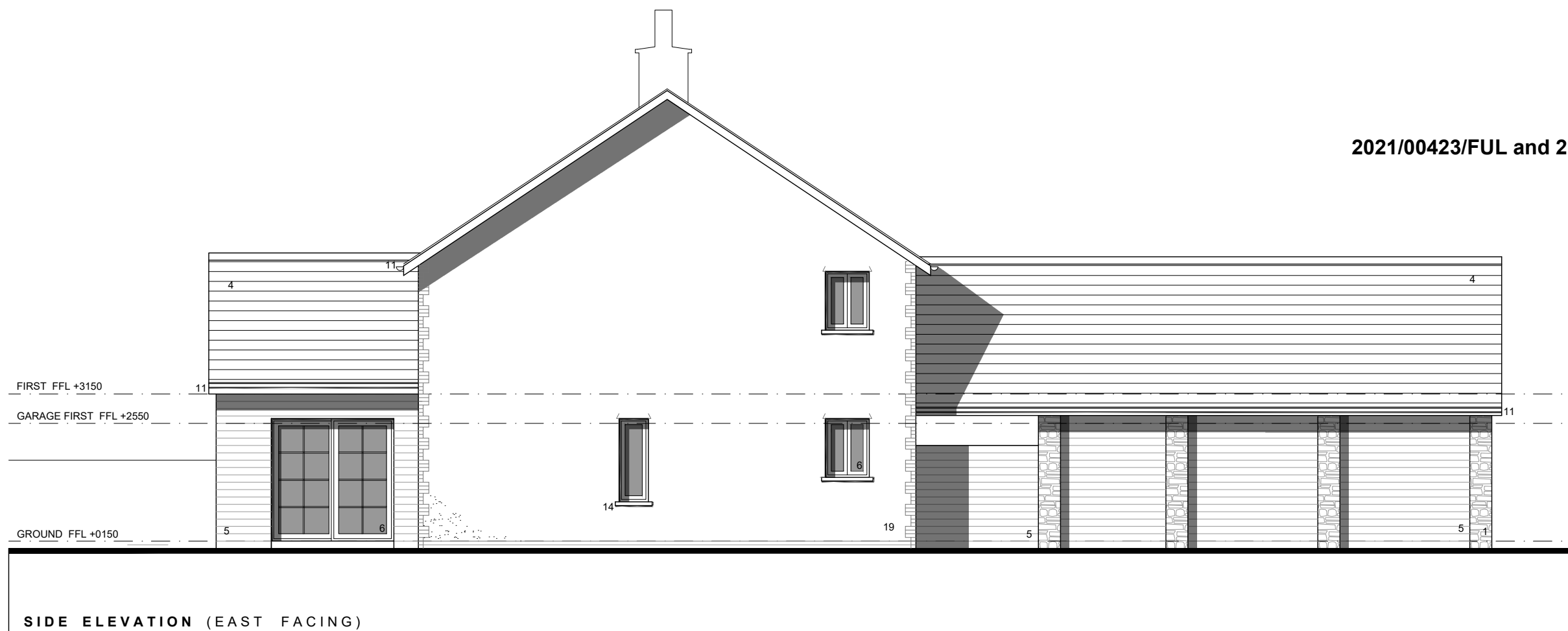


**MATERIAL KEY**

1. Bradstone Keinton Stone or similar
2. Facing brickwork (stock)
3. Brick arches / quoins / plinths
4. Cement fibre riven edge slate
5. Black cladding
6. Dark coloured window and door frames with clear double glazing
7. Timber entrance doors
8. Colour coated pergola
9. Terracotta chimney pots
10. Lead dormers
11. Dark coloured fascias, soffits and rainwater goods
12. Rooflights
13. Reconstituted stone window surrounds
14. Reconstituted stone cills
15. Reconstituted stone copings
16. Glass balustrade
17. Metal balustrade
18. Dark coloured garage doors
19. Render
20. Timber posts



**2021/00423/FUL and 2022/00424/CAC**



REV A 02.02.22 - Crittall style sliding doors added to side elevation



**C. W. ARCHITECTS Ltd**  
 Grosvenor House, 8 Park Grove, Cardiff CF10 3BN  
 Tel : +44 (0)2920 223123 Fax : +44 (0)2920 388367 E-Mail : office@cwarchitects.co.uk

Project Name :	Bolston House, Bonvilston		
Project Ref :	SP612		
Drawing Title :	PLOT EIGHT - Proposed Elevations_1	Scale :	1:100 @ A3
Drawing Number :	P36		
Revision:	PLANNING	Drawn by: rb	Date: Nov' 2021



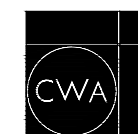
**MATERIAL KEY**

1. Bradstone Keinton Stone or similar
2. Facing brickwork (stock)
3. Brick arches / quoins / plinths
4. Cement fibre riven edge slate
5. Black cladding
6. Dark coloured window and door frames with clear double glazing
7. Timber entrance doors
8. Colour coated pergola
9. Terracotta chimney pots
10. Lead dormers
11. Dark coloured fascias, soffits and rainwater goods
12. Rooflights
13. Reconstituted stone window surrounds
14. Reconstituted stone cills
15. Reconstituted stone copings
16. Glass balustrade
17. Metal balustrade
18. Dark coloured garage doors
19. Render
20. Timber posts

2021/00423/FUL and 2022/00424/CAC



REV A 02.02.22 - Windows on rear elevation repositioned to reflect floor plans  
Crittall style bi-folding doors added



**C. W. ARCHITECTS Ltd**  
Grosvenor House, 8 Park Grove, Cardiff CF10 3BN  
Tel : +44 (0)2920 223123 Fax : +44 (0)2920 388367 E-Mail: office@cwarchitects.co.uk

Project Name :	Bolston House, Bonvilston	
Project Ref :	SP612	
Drawing Title :	PLOT EIGHT - Proposed Elevations_2	Scale :
Drawing Number :	P37	1:100 @ A3
Revision:	A	Drawn by: rb Date: Nov' 2021



**MATERIAL KEY**

1. Bradstone Keinton Stone or similar
2. Facing brickwork (stock)
3. Brick arches / quoins / plinths
4. Cement fibre riven edge slate
5. Black cladding
6. Dark coloured window and door frames with clear double glazing
7. Timber entrance doors
8. Colour coated pergola
9. Terracotta chimney pots
10. Lead dormers
11. Dark coloured fascias, soffits and rainwater goods
12. Rooflights
13. Reconstituted stone window surrounds
14. Reconstituted stone cills
15. Reconstituted stone copings
16. Glass balustrade
17. Metal balustrade
18. Dark coloured garage doors
19. Render
20. Timber posts



**2021/00423/FUL and 2022/00424/CAC**

REV A 02.02.22 - Window added adjacent to front door (Plot Nine)



**C. W. ARCHITECTS Ltd**  
 Grosvenor House, 8 Park Grove, Cardiff CF10 3BN  
 Tel : +44 (0)2920 223123 Fax : +44 (0)2920 388367 E-Mail office@cwarchitects.co.uk

Project Name : Bolston House, Bonvilston  
 Project Ref : SP612

Drawing Title : PLOTS NINE + TEN - Proposed Elevations\_1  
 Drawing Number : P40  
 Scale : 1:100 @ A3

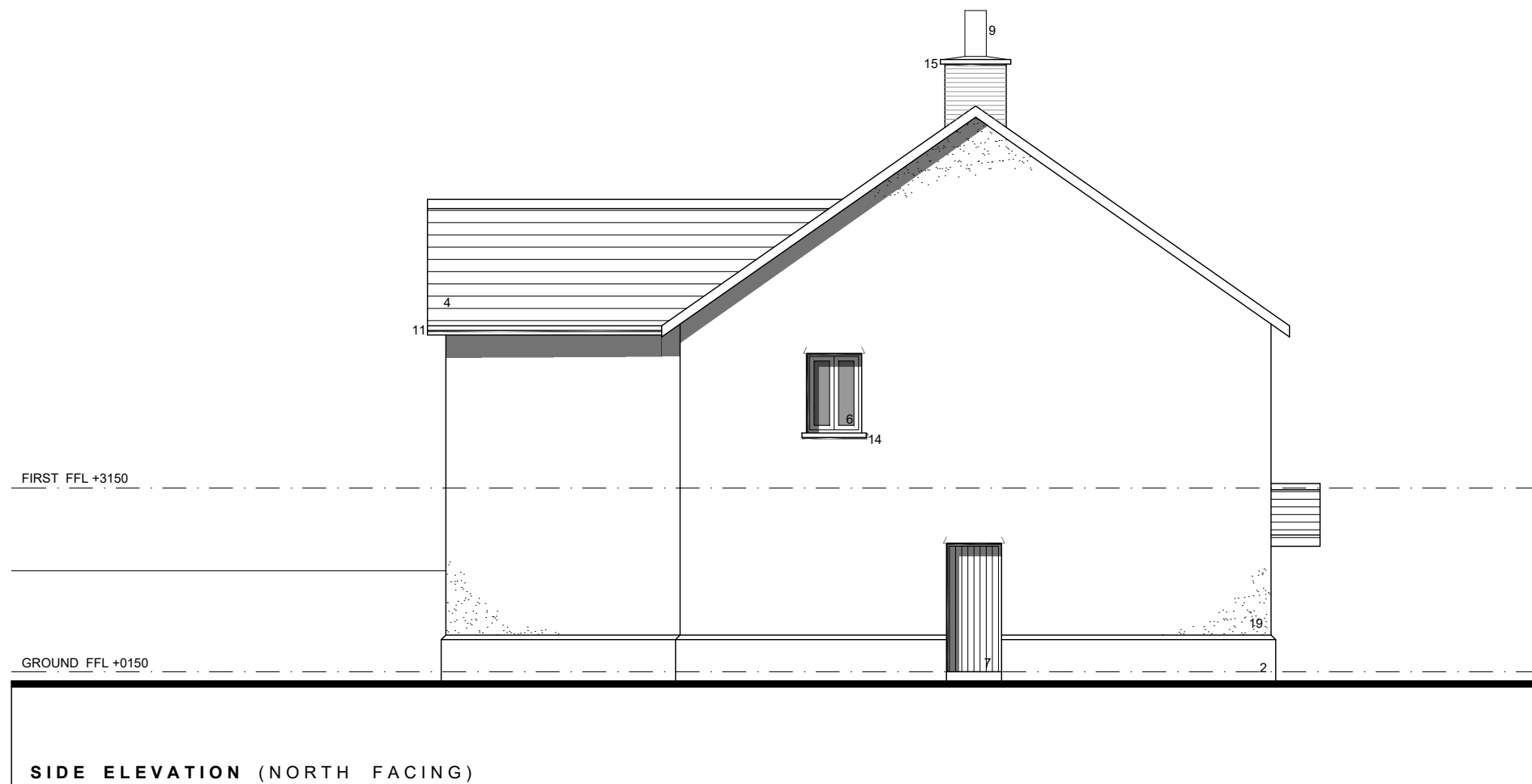
Revision: A Drawn by: rb Date: Nov' 2021



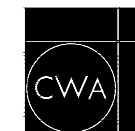
**MATERIAL KEY**

1. Bradstone Keinton Stone or similar
2. Facing brickwork (stock)
3. Brick arches / quoins / plinths
4. Cement fibre riven edge slate
5. Black cladding
6. Dark coloured window and door frames with clear double glazing
7. Timber entrance doors
8. Colour coated pergola
9. Terracotta chimney pots
10. Lead dormers
11. Dark coloured fascias, soffits and rainwater goods
12. Rooflights
13. Reconstituted stone window surrounds
14. Reconstituted stone cills
15. Reconstituted stone copings
16. Glass balustrade
17. Metal balustrade
18. Dark coloured garage doors
19. Render
20. Timber posts

**2021/00423/FUL and 2022/00424/CAC**



REV A 02.02.22 - Bi-folding doors changed to sliding doors (rear elevation)



**C. W. ARCHITECTS Ltd**  
 Grosvenor House, 8 Park Grove, Cardiff CF10 3BN  
 Tel : +44 (0)2920 223123 Fax : +44 (0)2920 388367 E-Mail office@cwarchitects.co.uk

Project Name : Bolston House, Bonvilston  
 Project Ref : SP612

Drawing Title : PLOTS NINE + TEN - Proposed Elevations\_2 Scale : 1:100 @ A3  
 Drawing Number : P41

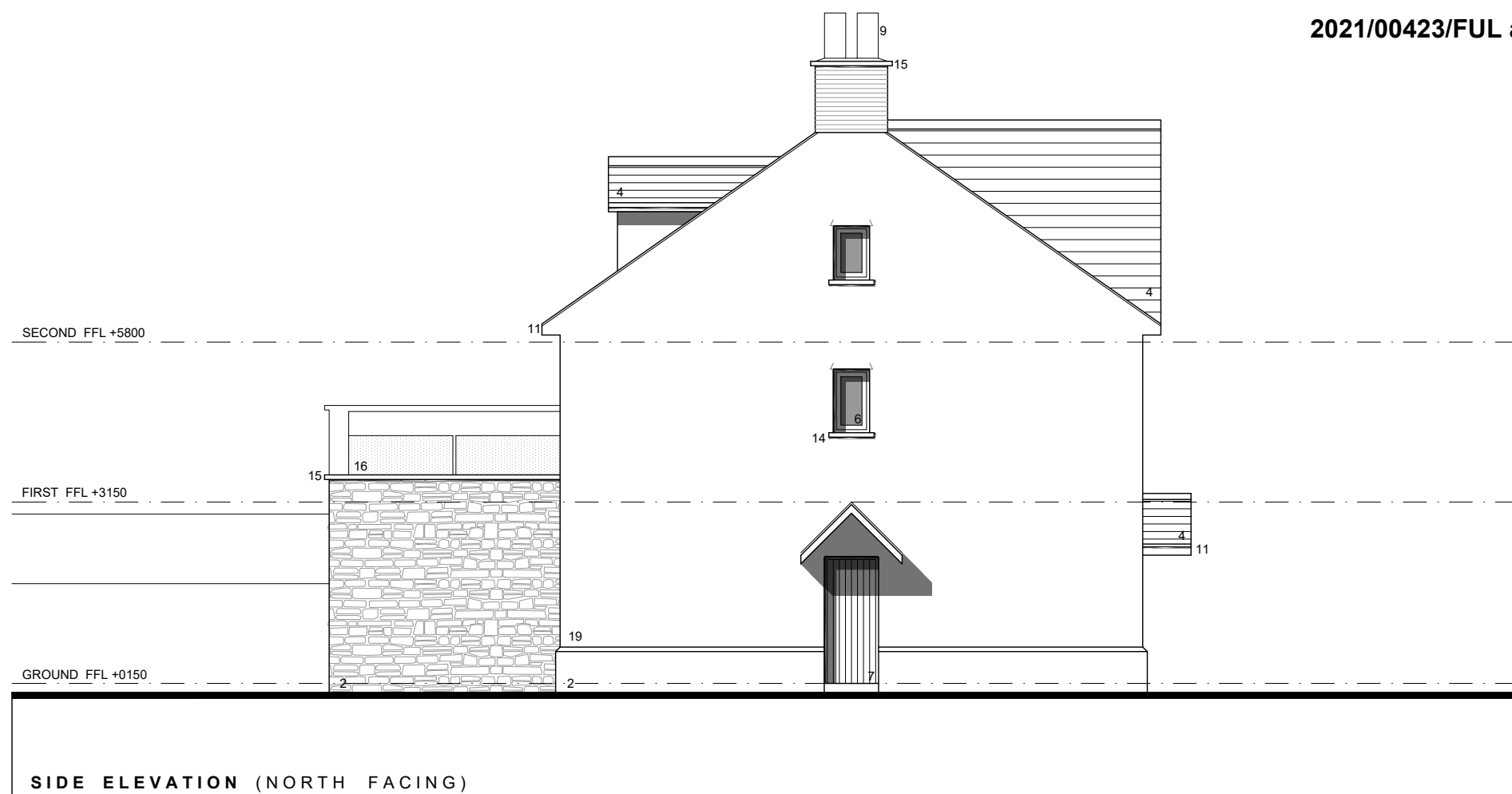
Revision: A Drawn by: rb Date: Nov' 2021



**MATERIAL KEY**

1. Bradstone Keinton Stone or similar
2. Facing brickwork (stock)
3. Brick arches / quoins / plinths
4. Cement fibre riven edge slate
5. Black cladding
6. Dark coloured window and door frames with clear double glazing
7. Timber entrance doors
8. Colour coated pergola
9. Terracotta chimney pots
10. Lead dormers
11. Dark coloured fascias, soffits and rainwater goods
12. Rooflights
13. Reconstituted stone window surrounds
14. Reconstituted stone cills
15. Reconstituted stone copings
16. Glass balustrade
17. Metal balustrade
18. Dark coloured garage doors
19. Render
20. Timber posts

2021/00423/FUL and 2022/00424/CAC



REV A 11.02.22 Single chimney replaced with two separate chimneys  
Barges removed and clipped verges shown



**C. W. ARCHITECTS Ltd**  
Grosvenor House, 8 Park Grove, Cardiff CF10 3BN  
Tel : +44 (0)2920 223123 Fax : +44 (0)2920 388367 E-Mail office@cwarchitects.co.uk

Project Name : Bolston House, Bonvilston  
Project Ref : SP612

Drawing Title : PLOTS ELEVEN - FOURTEEN - Proposed Elevations\_1  
Drawing Number : P44  
Scale : 1:100 @ A3

Revision: A Drawn by: rb Date: Nov' 2021

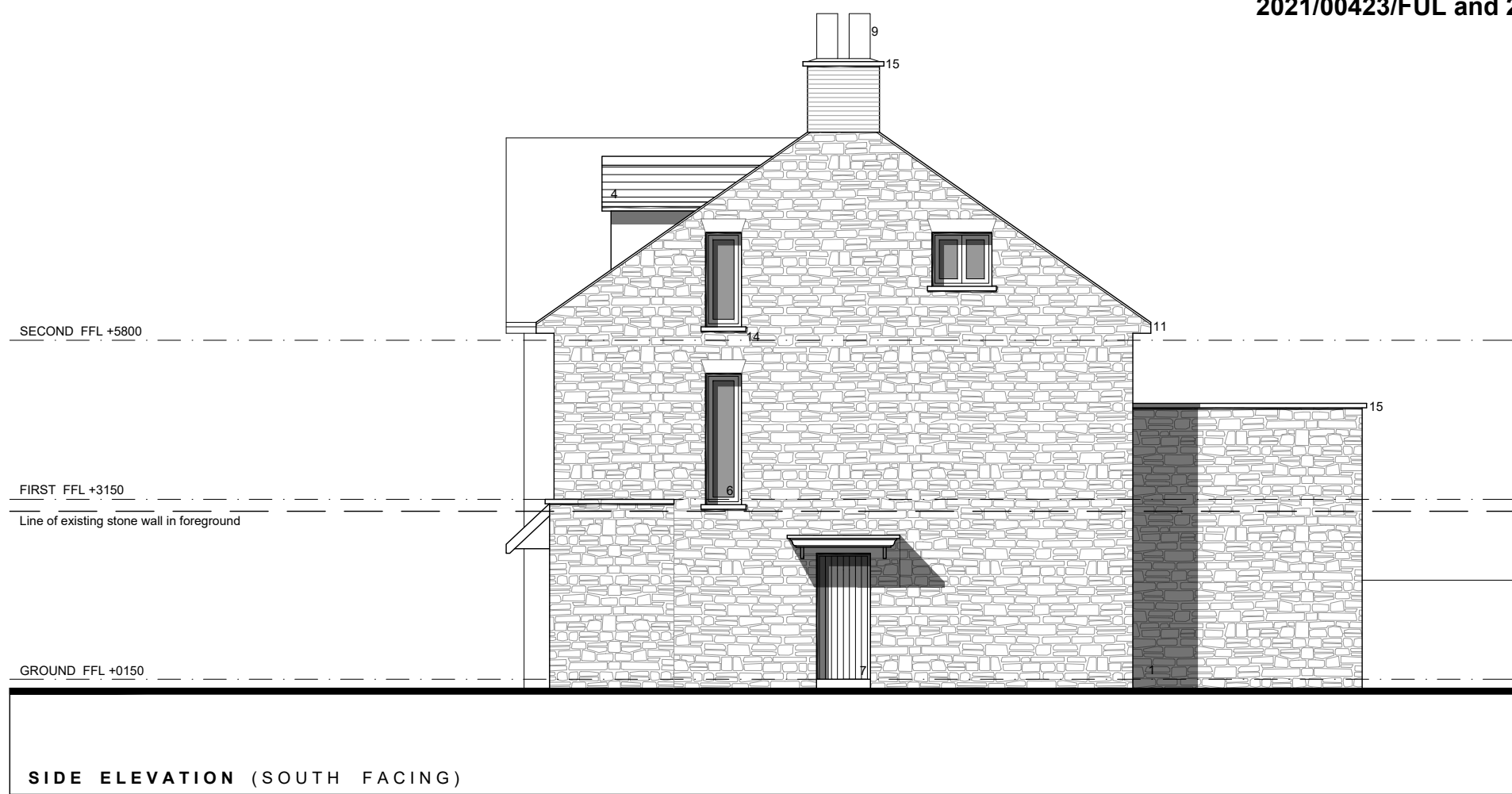




**MATERIAL KEY**

1. Bradstone Keinton Stone or similar
2. Facing brickwork (stock)
3. Brick arches / quoins / plinths
4. Cement fibre riven edge slate
5. Black cladding
6. Dark coloured window and door frames with clear double glazing
7. Timber entrance doors
8. Colour coated pergola
9. Terracotta chimney pots
10. Lead dormers
11. Dark coloured fascias, soffits and rainwater goods
12. Rooflights
13. Reconstituted stone window surrounds
14. Reconstituted stone cills
15. Reconstituted stone copings
16. Glass balustrade
17. Metal balustrade
18. Dark coloured garage doors
19. Render
20. Timber posts

2021/00423/FUL and 2022/00424/CAC



REV A 11.02.22 Wall added to side of terrace  
 Rear dormer to Flat 4 replaced with rooflights  
 Windows added to Flat 4 bathroom and stairs  
 All bi-folding doors changed to sliding doors  
 French doors to studies changed to windows

**CWA**  
**C. W. ARCHITECTS Ltd**  
 Grosvenor House, 8 Park Grove, Cardiff CF10 3BN  
 Tel : +44 (0)2920 223123 Fax : +44 (0)2920 388367 E-Mail office@cwarchitects.co.uk

Project Name :	Bolston House, Bonvilston
Project Ref :	SP612

Drawing Title :	PLOTS ELEVEN - FOURTEEN - Proposed Elevations_2	Scale :	1:100 @ A3
Drawing Number :	P45		

Revision:	A	Drawn by:	rb	Date:	Nov' 2021
-----------	---	-----------	----	-------	-----------

**COMMITTEE SITE PHOTOS=- BOLSTON HOUSE-2021/00423/FUL**



VIEW TOWARDS THE SITE LOOKING WEST



VIEW TOWARDS SITE FROM RED LION CAR PARK





VIEW OF SITE/SITE TREES FROM RED LION CAR PARK



VIEW FROM A48 LOOKING WEST TOWARDS SITE





VIEW OF WALL – LOOKING WEST TOWARDS ENTRANCE



VIEW OF WALL – LOOKING WEST TOWARDS ENTRANCE





VIEW OF WALL – LOOKING WEST TOWARDS ENTRANCE



VIEW EAST TOWARDS ENTRANCE FROM A48





VIEW EAST TOWARDS ENTRANCE FROM A48



VIEW EAST TOWARDS ENTRANCE FROM A48





VIEW OF EXISTING ACCESS



VIEW OF ADJOINING DWELLING FROM A48





VIEW INTO THE SITE FROM DRIVE



VIEW INTO THE SITE FROM DRIVE





VIEW OF EXISTING DWELLING AT SITE



VIEW OF EXISTING DWELLING AT SITE





VIEW OF EXISTING GARAGE



VIEW OF TREES WITHIN SITE





VIEW OF TREES WITHIN SITE



VIEW OF TREES WITHIN SITE





VIEW OF TREES WITHIN SITE



VIEW OF TREES WITHIN SITE





VIEW TOWARDS DWELLINGS ALONG THE WALK (EAST OF SITE) FROM WITHIN SITE



VIEW TOWARDS DWELLINGS ALONG THE NORTH OF THE SITE FROM WITHIN SITE





PHOTO OF WIDER LANDSCAPE FROM WITHIN THE SITE



PHOTO OF WIDER LANDSCAPE FROM WITHIN THE SITE





PHOTO OF WIDER LANDSCAPE FROM WITHIN THE SITE



PHOTO OF WIDER LANDSCAPE FROM WITHIN THE SITE





VIEW OF TREES WITHIN SITE



VIEW OF TREES WITHIN SITE





VIEW OF TREES WITHIN SITE



VIEW OF TREES WITHIN SITE





VIEW OF TREES WITHIN THE SITE FROM WIDER STREETSCENE



VIEW OF TREES WITHIN THE SITE FROM WIDER STREETSCENE





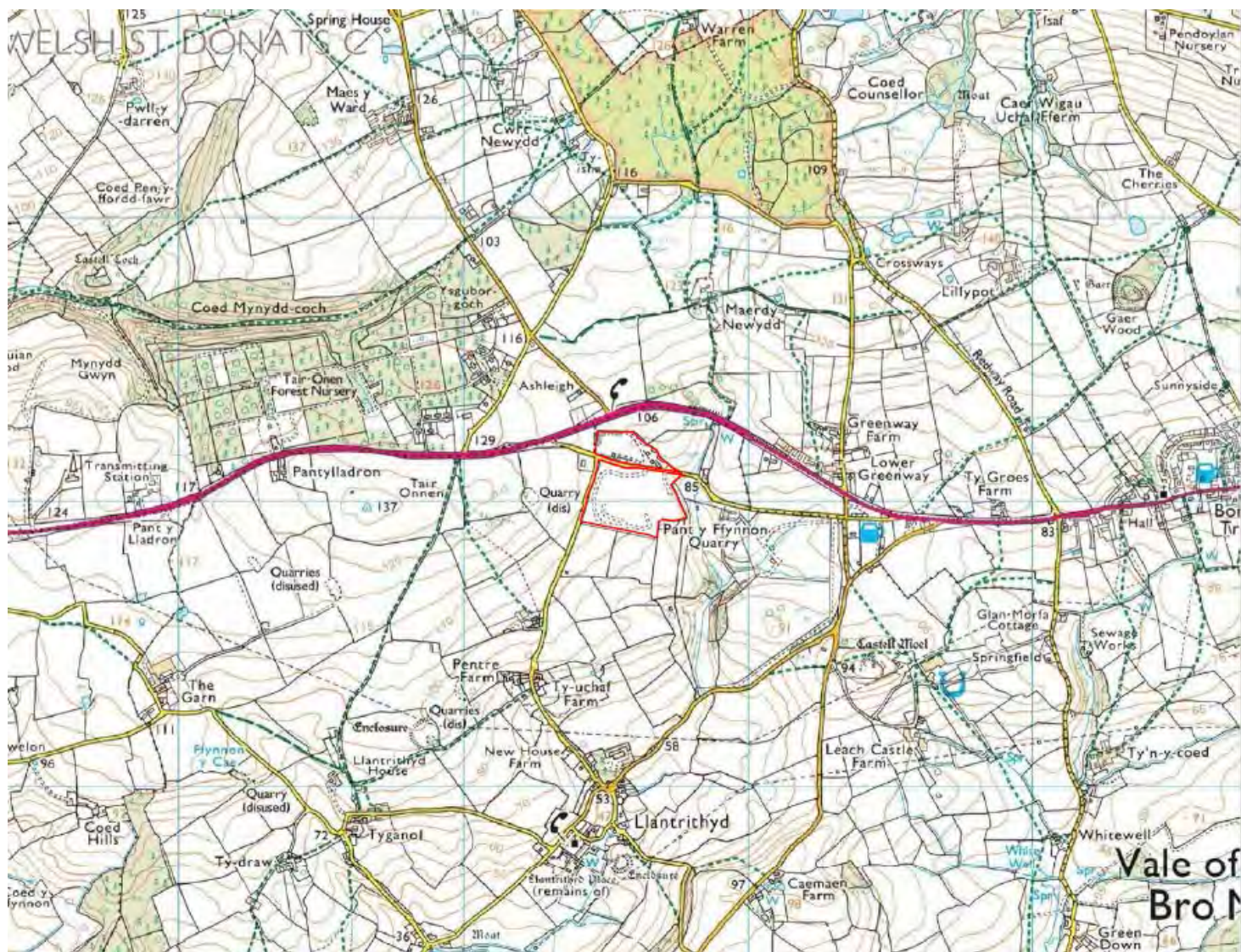
VIEW OF TREES WITHIN THE SITE FROM WIDER STREETSCENE



VIEW OF TREES WITHIN THE SITE FROM WIDER STREETSCENE



Site Location





## Extent of current planning permissions



### Legend

-  Planning Application Boundary and Land In Control of the Applicant
-  Extent of Site covered by ROMP Decision 97/01084/FUL dated 9th January 1988
-  Extent of Site covered by ROMP Decision 2009/00814/ENV dated 6th November 2009
-  Constituent Planning Permissions



Current situation – North Quarry



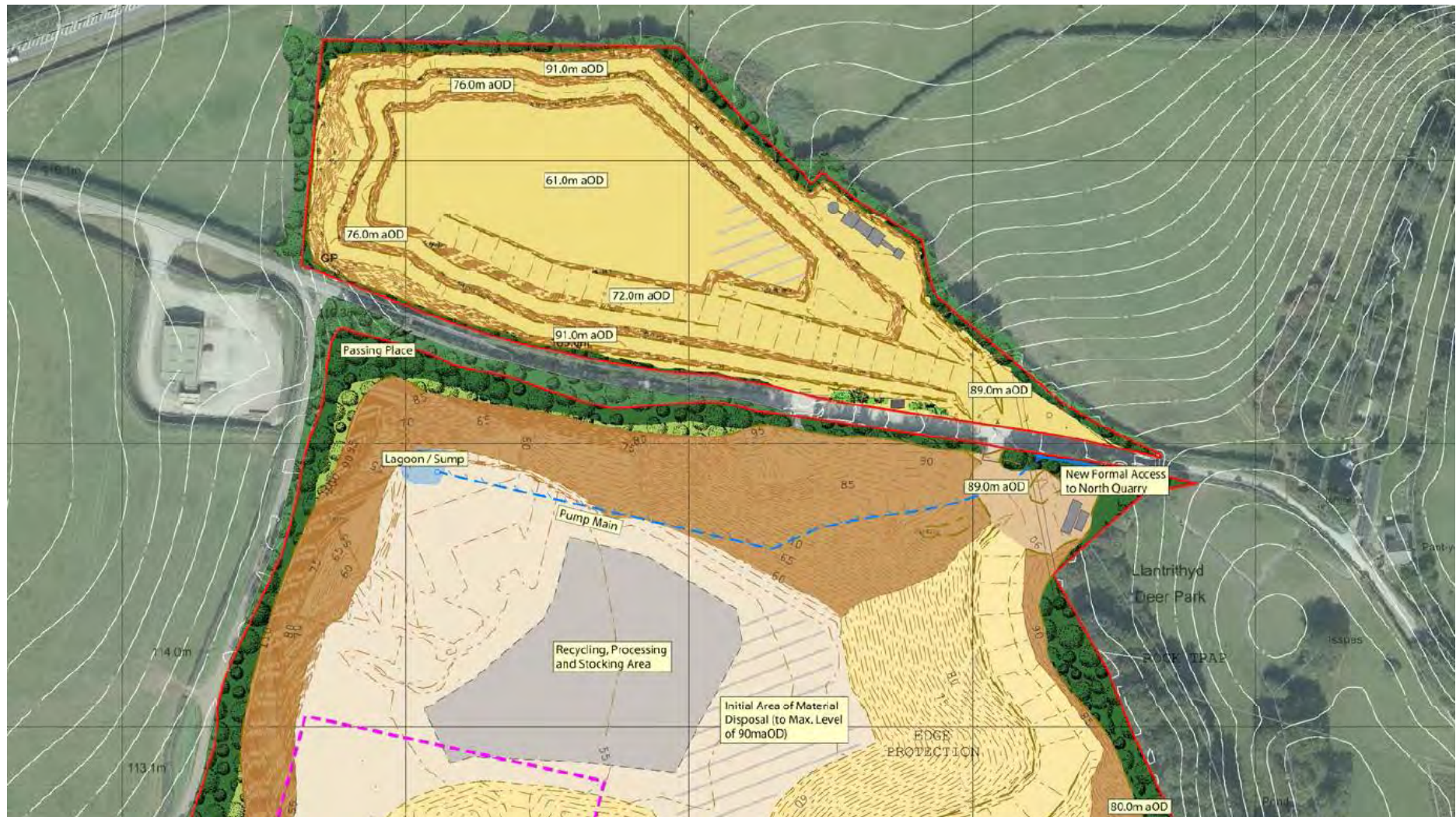


Preliminary works – North Quarry



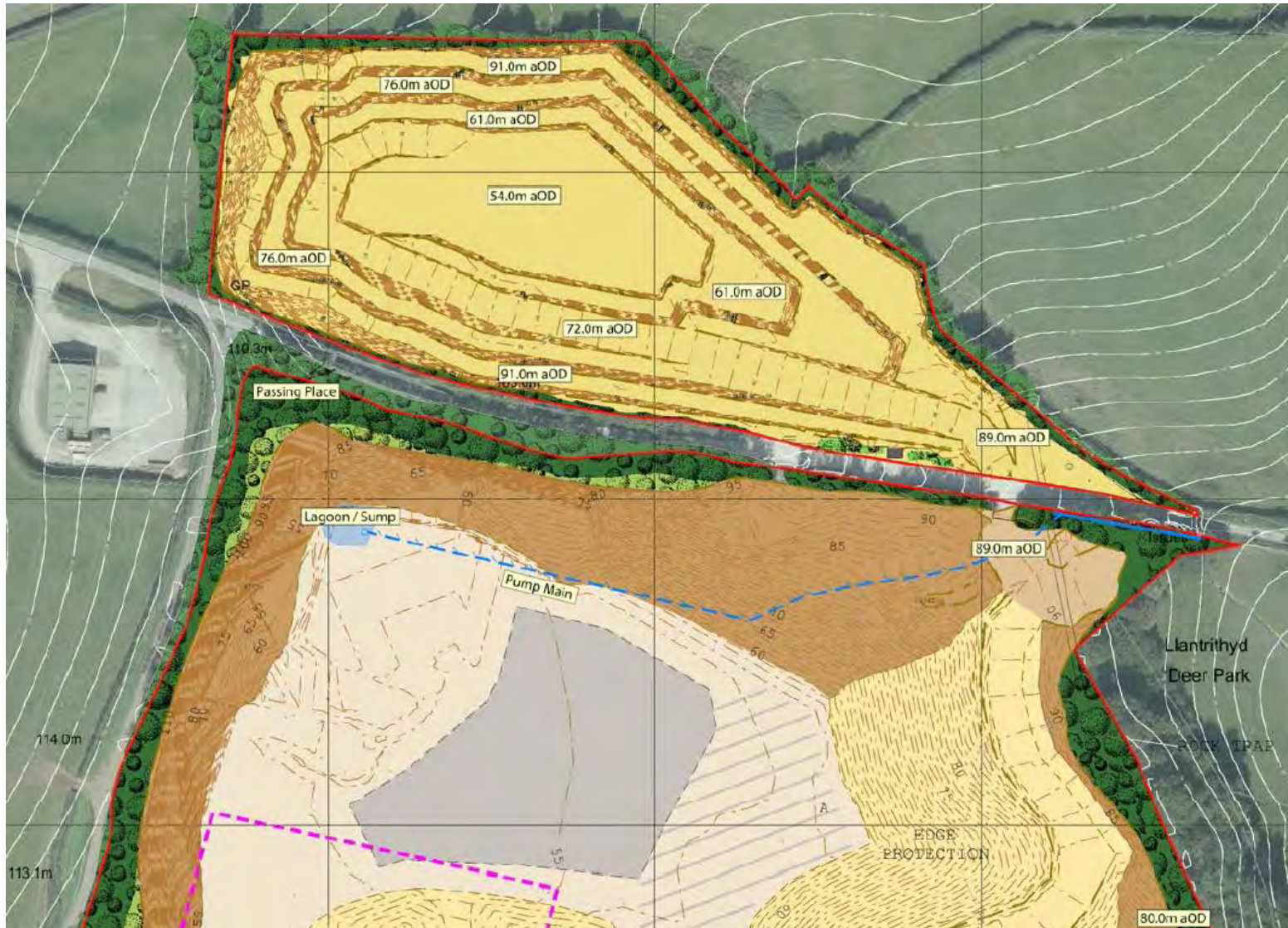


Phase 1 works – North Quarry



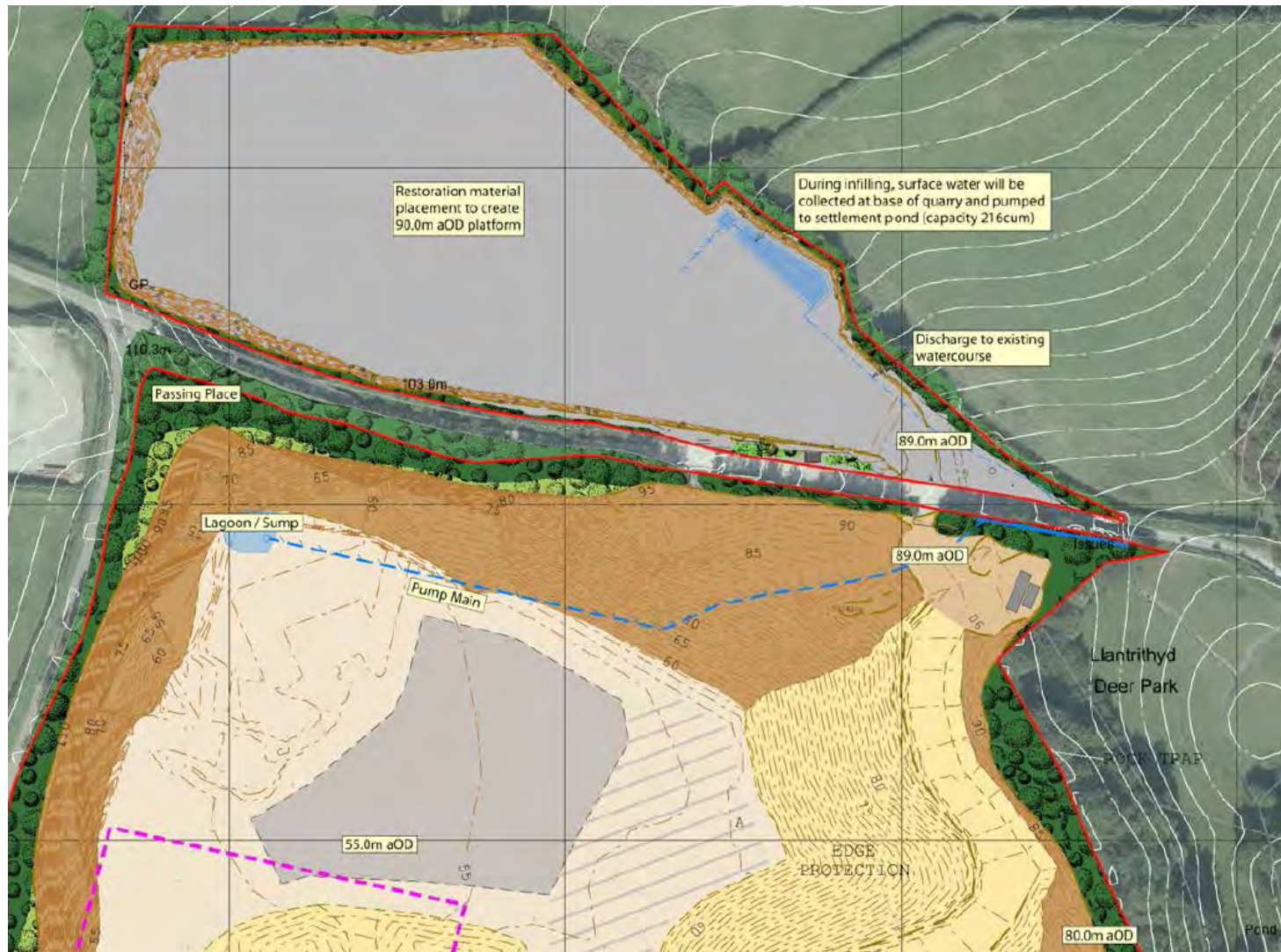


Phase 2 works – North Quarry





Interim restoration works – North Quarry

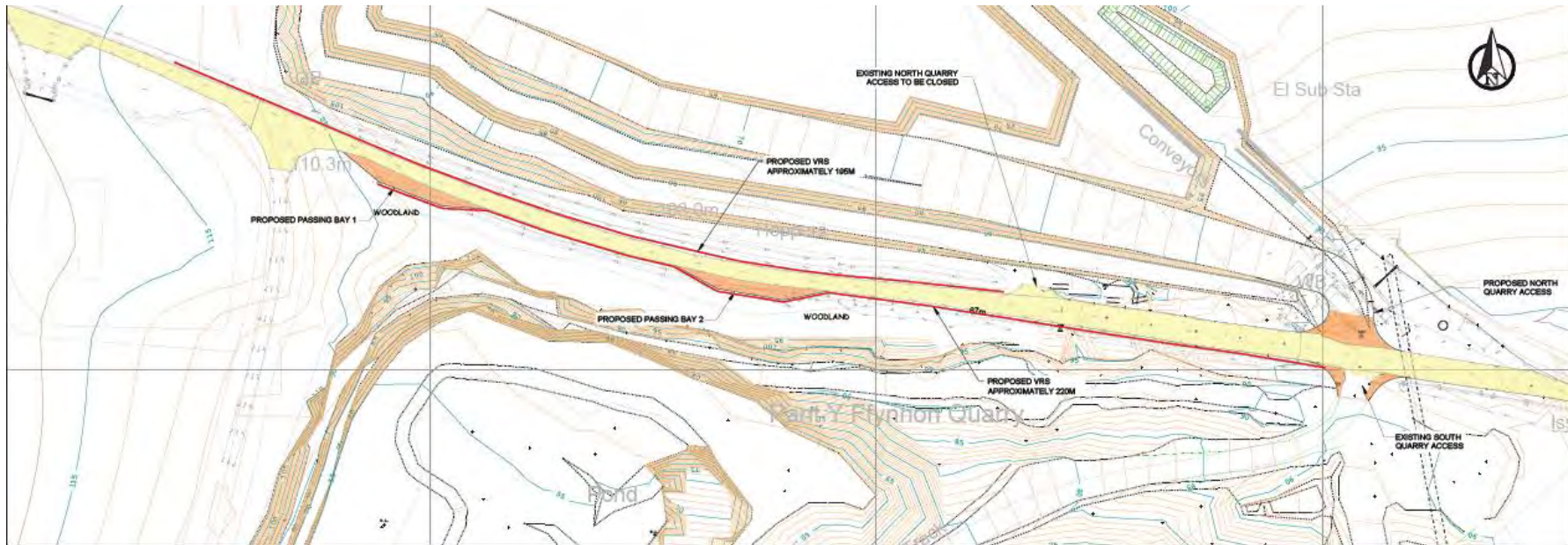
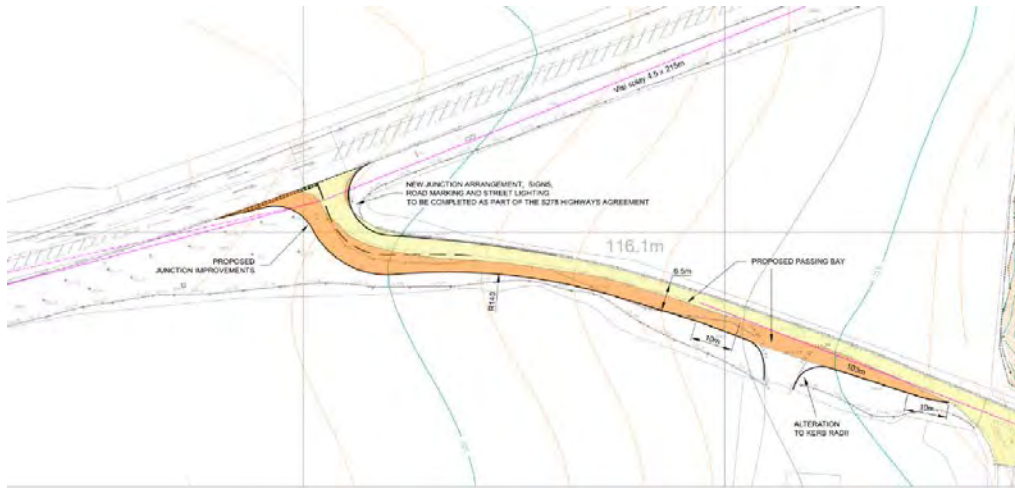




Final restoration works – North Quarry

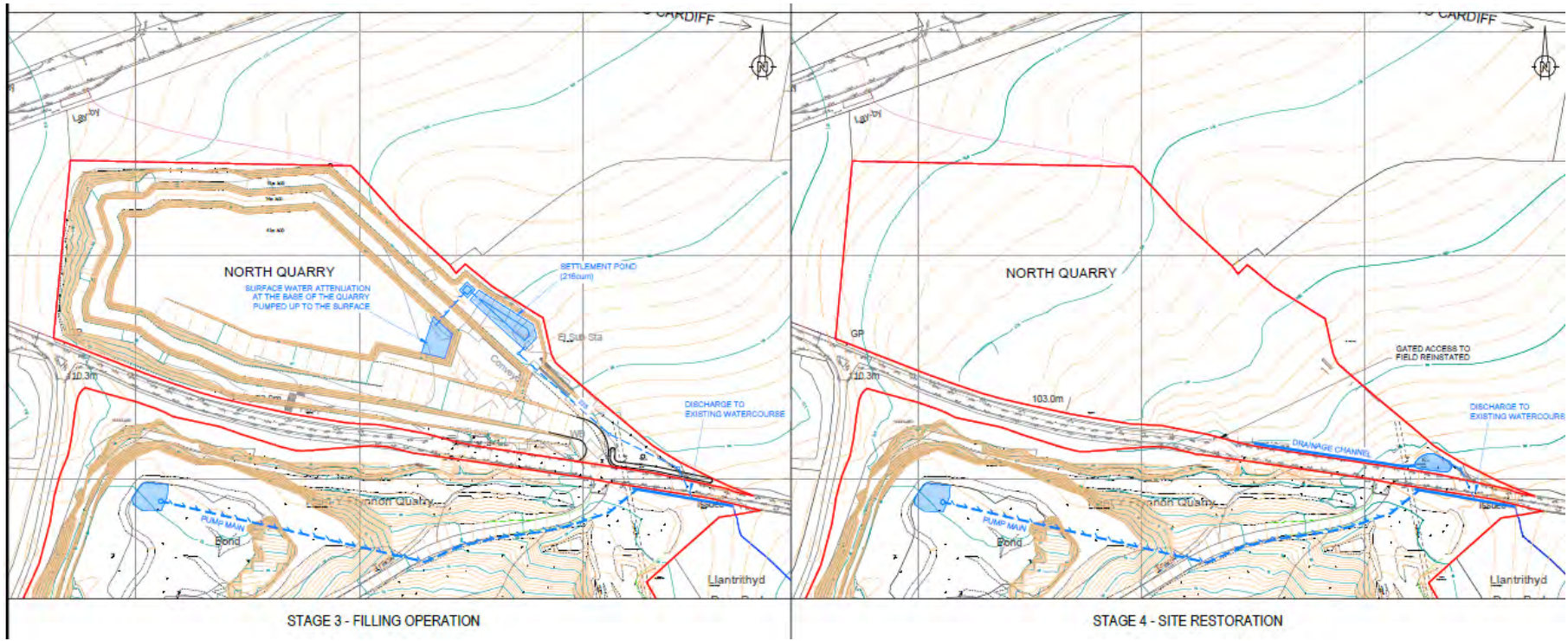


Proposed highway improvement works





Proposed drainage plan





Site photograph – Pant y Ffynnon Lane (looking east)





Site photograph – Pant y Ffynnon Lane (looking west)





Site photograph – North Quarry





Site photograph – North Quarry



**2021/01379/FUL – The Quarries, Bonvilston**



Site photograph – South Quarry



**2021/01379/FUL – The Quarries, Bonvilston**



Site photograph – Pant y Ffynnon Lane (west of quarry, looking east toward it)





Site photograph – Pant y Ffynnon Lane (western junction to A48)





Site photograph – Pant y Ffynnon Lane (near western junction to A48, looking east)



**2021/01379/FUL – The Quarries, Bonvilston**

Site Location



**2022/000397/RG3 – Land North of Holm View Leisure Centre, Barry**





Illustrative Elevations:





# Elevations & Floorplans

## Type 1 (2 Bed) – Elevations and Floorplans



Type 1 - Ground floor

1:50

Check dimensions against plan 10/21/2016



Type 1 - Front elevation

1:50

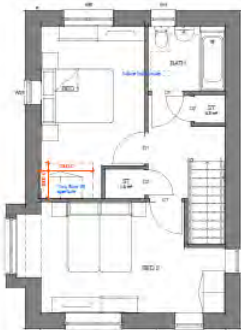
Specify material schedule

1. Through cladding / block fibre cement roof tiles to pitched roof
2. UPVC Sashless / Frameless RAL 7035
3. Black UPVC Fibre-reinforced plastic
4. Fencing: Endurocrete, 2000H - Kiersley Antracite
5. White colour 'W3' render
6. UPVC Casement windows - RAL 7035
7. G.1 FRG200 front doors with glazed side panels (if indicated); Non-stepped PVA locksets to be aligned
8. Aluminium framed glazed side balconies
9. Black finished in 14001 cladding
10. Trussed timber attic structure



Type 1 - Side elevation 1

1:50



Type 1 - First floor

1:50



Type 1 - Rear elevation

1:50

1. Through cladding / block fibre cement roof tiles to pitched roof
2. Black finished in 14001 cladding
10. Trussed timber attic structure



Type 1 - Side elevation 2

1:50

Type 2 (3 Bed) – Elevations and Floorplans



Type 2 - Ground floor

1:50

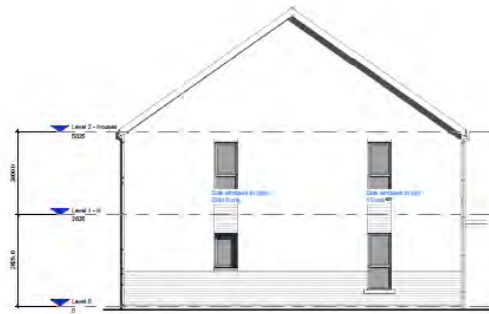
Head Section/Drawn: 20/07/20



Type 2 - Front elevation

1:50

Schedule of materials



Type 2 - Side elevation 1

1:50



Type 2 - First floor

1:50

- 5. White outdoor 'soft' render
- 6. UPVC Casement windows - RA, 7000
- 7. 10 'FRIGOR' front doors with glazed side panels (if indicated), non-standard PVC, colour to be agreed
- 8. Aluminium framed glazed pull entrance
- 9. Steps finished in arch cladding
- 10. Treated timber door casings



Type 2 - Rear elevation

1:50

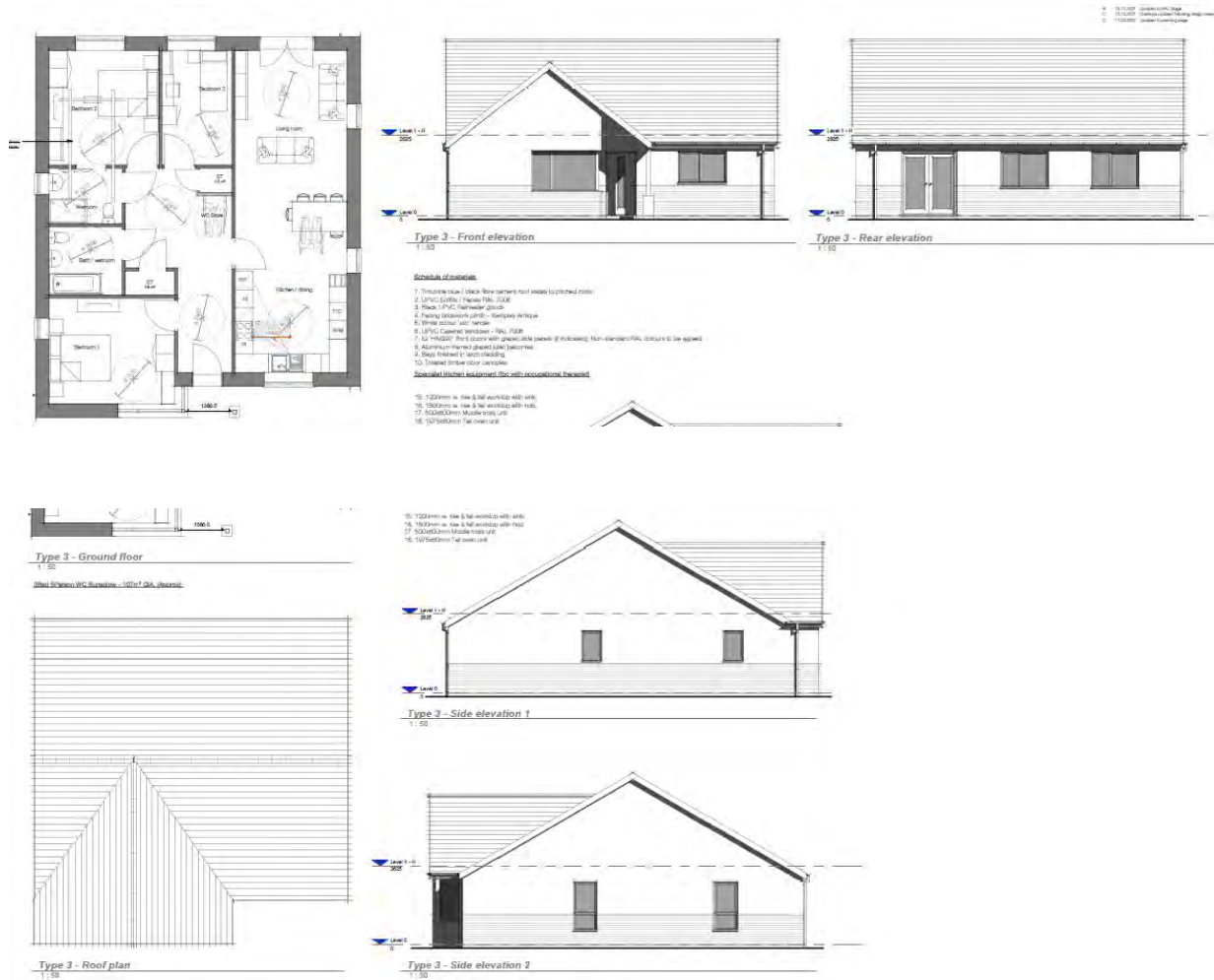


Type 2 - Side elevation 2

1:50



## Type 3 (Bungalows) – Elevations and Floorplans



Type 4 (2 Bed) – Elevations and Floorplans



Type 4 - Ground floor  
1:50  
2-bed storage room - 30m<sup>2</sup> GFA



Type 4 - Front elevation  
1:50



Type 4 - Side elevation 1  
1:50

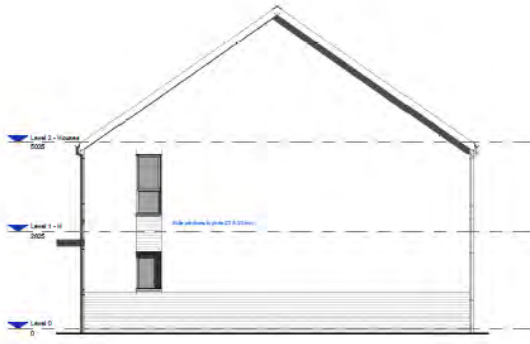
- 4. Facing brickwork, 300H - Kempsley Antique
- 5. White colour 'wool' render
- 6. UPVC Double windows - F&L 7000
- 7. G3 UPVC02 front doors with glazed side panels (if installed) Non-ventilated FRG, colour to be agreed
- 8. Aluminium framed glazed glass entrance
- 9. Steps finished in land levelling
- 10. Treated timber door centrepiece



Type 4 - First floor  
1:50



Type 4 - Rear elevation  
1:50



Type 4 - Side elevation 2  
1:50







Type 5 - Ground floor

1:50

Steel Design apartments 50m<sup>2</sup> etc.

- 
- 
- 
- 



Type 5 - First floor

1:50

NS: The floor window to be  
fixed with aluminium glazing

NS: The floor window to be  
fixed with aluminium glazing



Site Photograph 1 - Site Access



**2022/000397/RG3 – Land North of Holm View Leisure Centre, Barry**

Site Photograph 2 – The Site





Site Photograph 3 – Neighbouring Development Delivered under Phase 1





2022/000397/RG3 – Land North of Holm View Leisure Centre, Barry



Site Photograph 4 – Neighbouring Residential Dwellings (Gateholm Close)



Site Photograph 5 – Local Facilities at Skomer Road





Site Photograph 6 – Neighbouring Holm View Leisure Centre

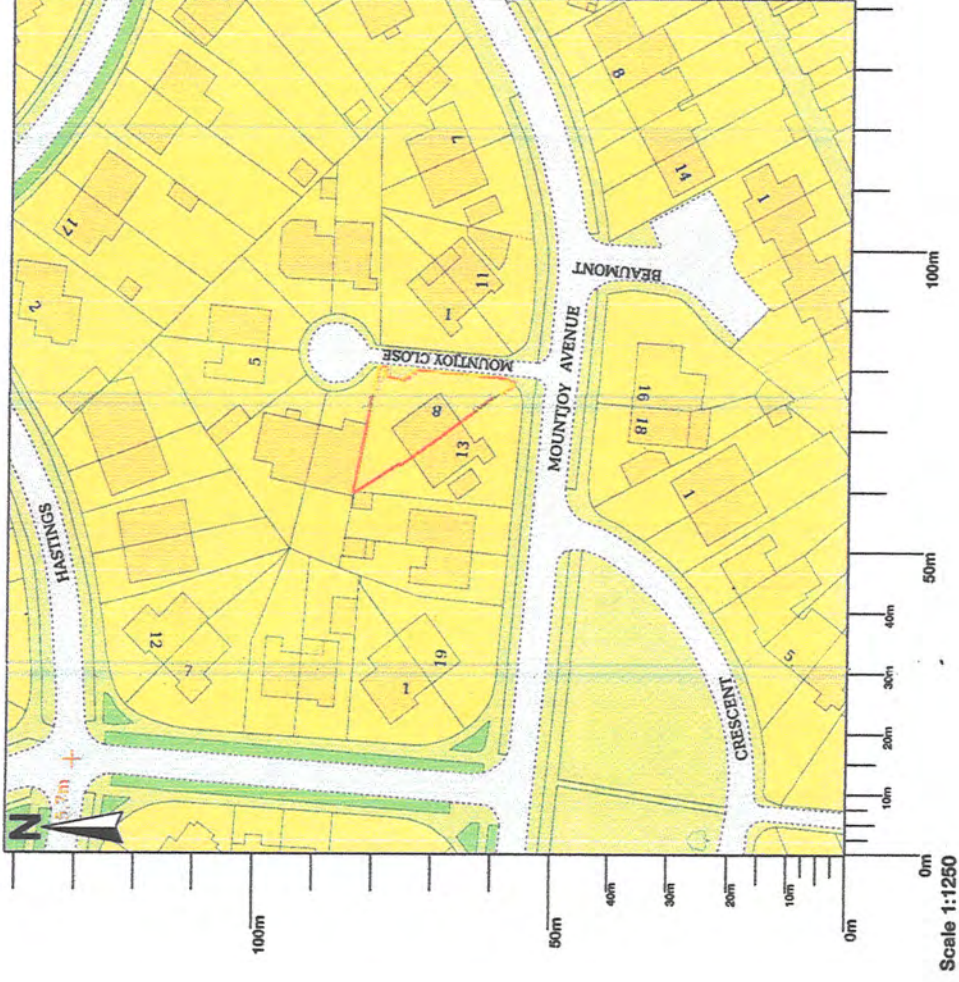




**UK  
Planning  
Maps**



## 8 Mountjoy Close, Penarth, CF64 2TA



2022/00642/FUL

Map area bounded by: 317521,171469 317663,171611. Produced on 05 April 2022 from the OS National Geographic Database. Reproduction in whole or part is prohibited without the prior permission of Ordnance Survey. © Crown copyright 2022. Supplied by UKPlanningMaps.com a licensed OS partner (100054135). Unique plan reference: p2c/uk/778983/1053483

✓



**NOTES**

This drawing is copyright.  
It is sent to you in confidence and must not be reproduced or disclosed to third parties without our prior permission.

Do not scale from this drawing.

This drawing is to be read in conjunction with all relevant consultants, specialist manufacturers drawings and specifications.

Any discrepancies in dimensions or details on or between these drawings should be drawn to our attention.

All dimensions are in millimetres unless noted otherwise.

Any surveyed information incorporated within this drawing cannot be guaranteed as accurate unless confirmed by fixed dimension.

**2022/00642/FUL**



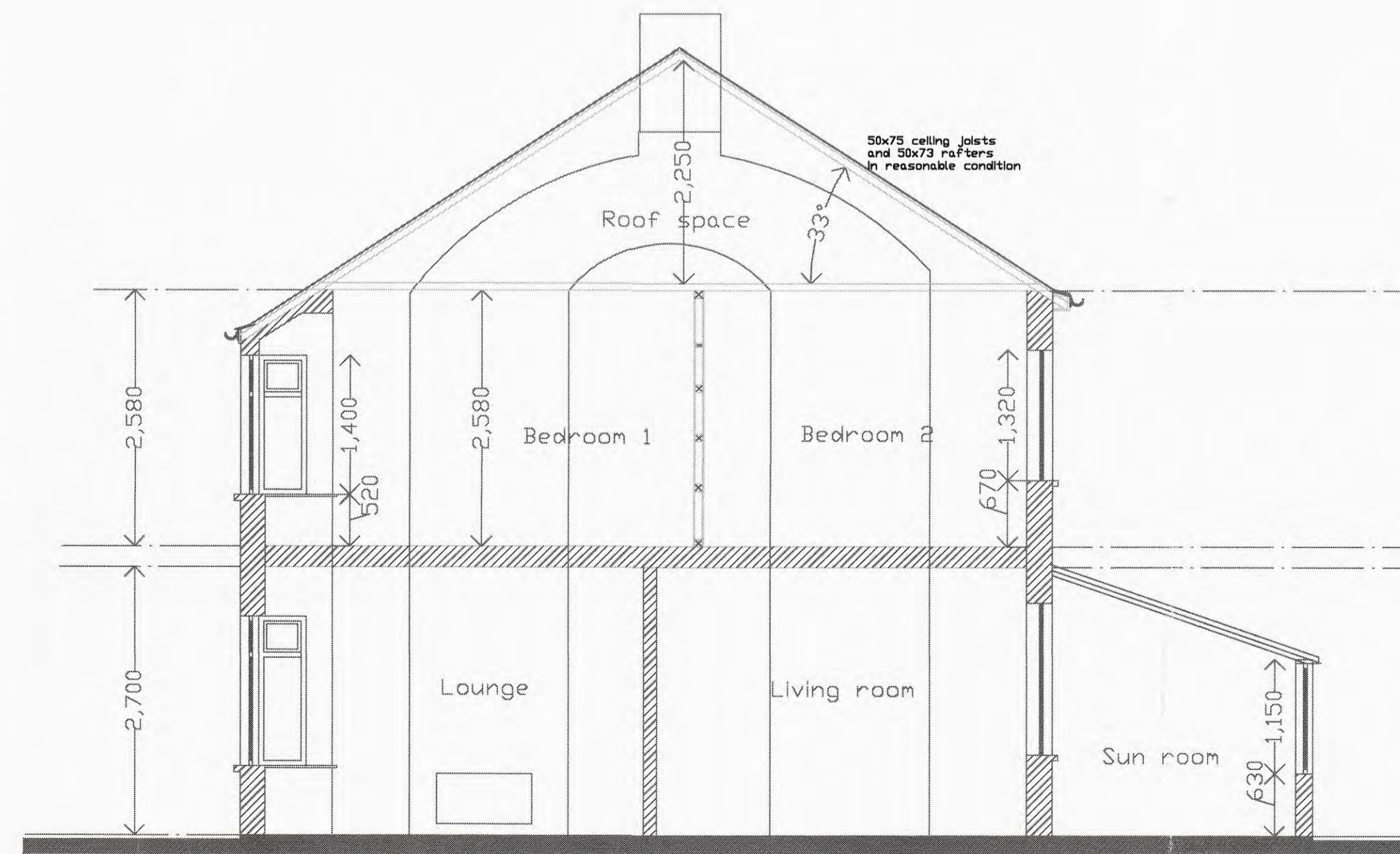
Existing Elevation to the Main Road



Existing Elevation to the Rear Garden



Existing Elevation to the Drive



Existing Cross Section A - A

ROSSER ASSOCIATES  
20, DUFFRYN RD.,  
CYNCOED, CARDIFF.

Tel: 029 20754296

CLIENT Penny and Andy Knight  
PROJECT 8, Mountjoy Close,  
Penarth, South Glamorgan

TITLE Survey - Existing Elevations and  
Cross Section A - A

DATE 04.04.2022 PROJECT NO. 701

DRAWN SR. CHECKED

SCALE 1:50

PO2



**NOTES:**  
 This drawing is copyright. It is sent to you in confidence and must not be reproduced or disclosed to third parties without our prior permission.  
 Do not scale from this drawing.  
 This drawing is to be read in conjunction with all relevant consultants, specialist manufacturers drawings and specifications.  
 Any discrepancies in dimensions or details on or between these drawings should be drawn to your attention.  
 All dimensions are in millimetres unless noted otherwise.  
 Any surveyed information incorporated within this drawing cannot be guaranteed as accurate unless confirmed by fixed dimension.

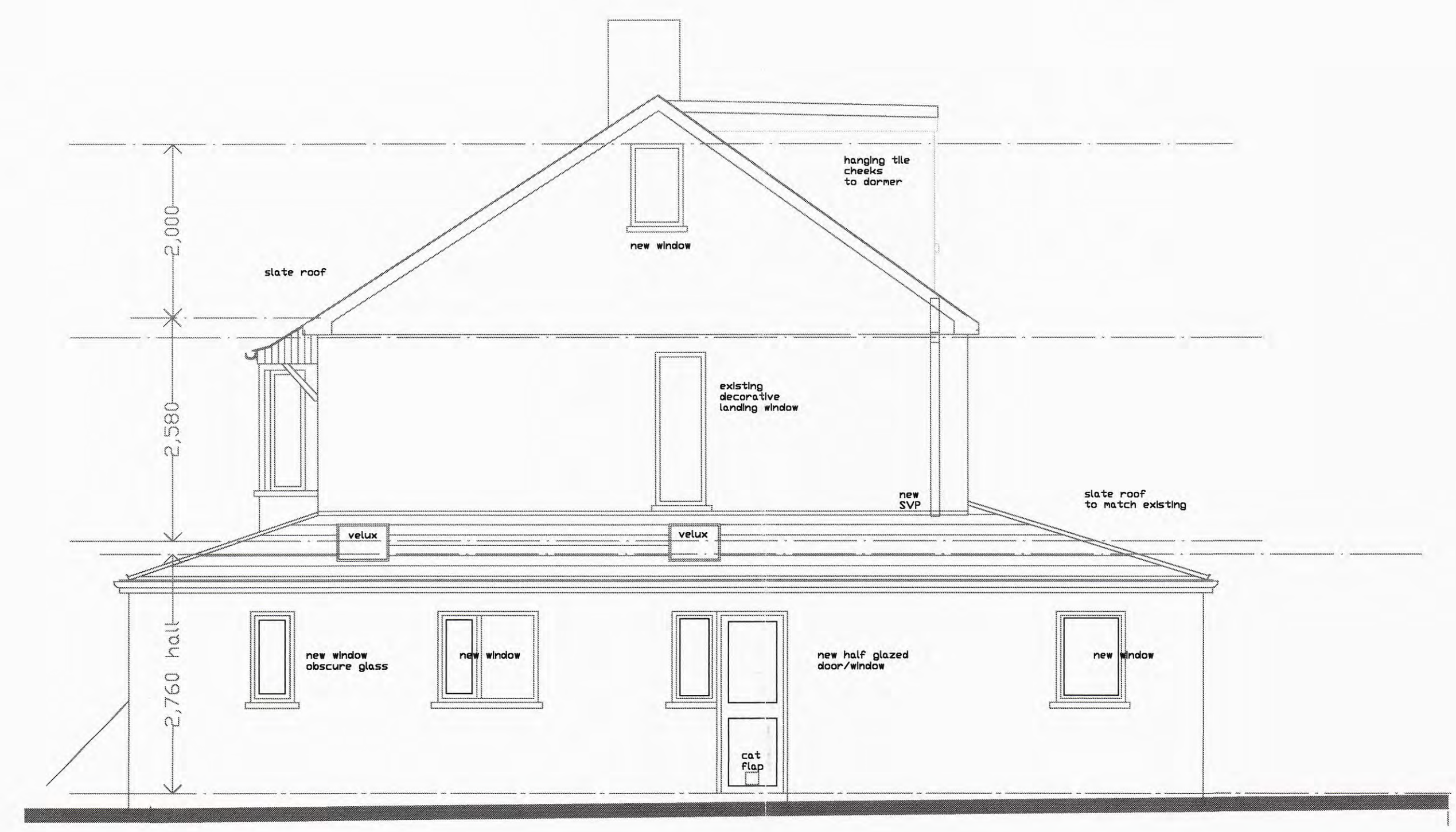


Proposed Elevation to the Main Road

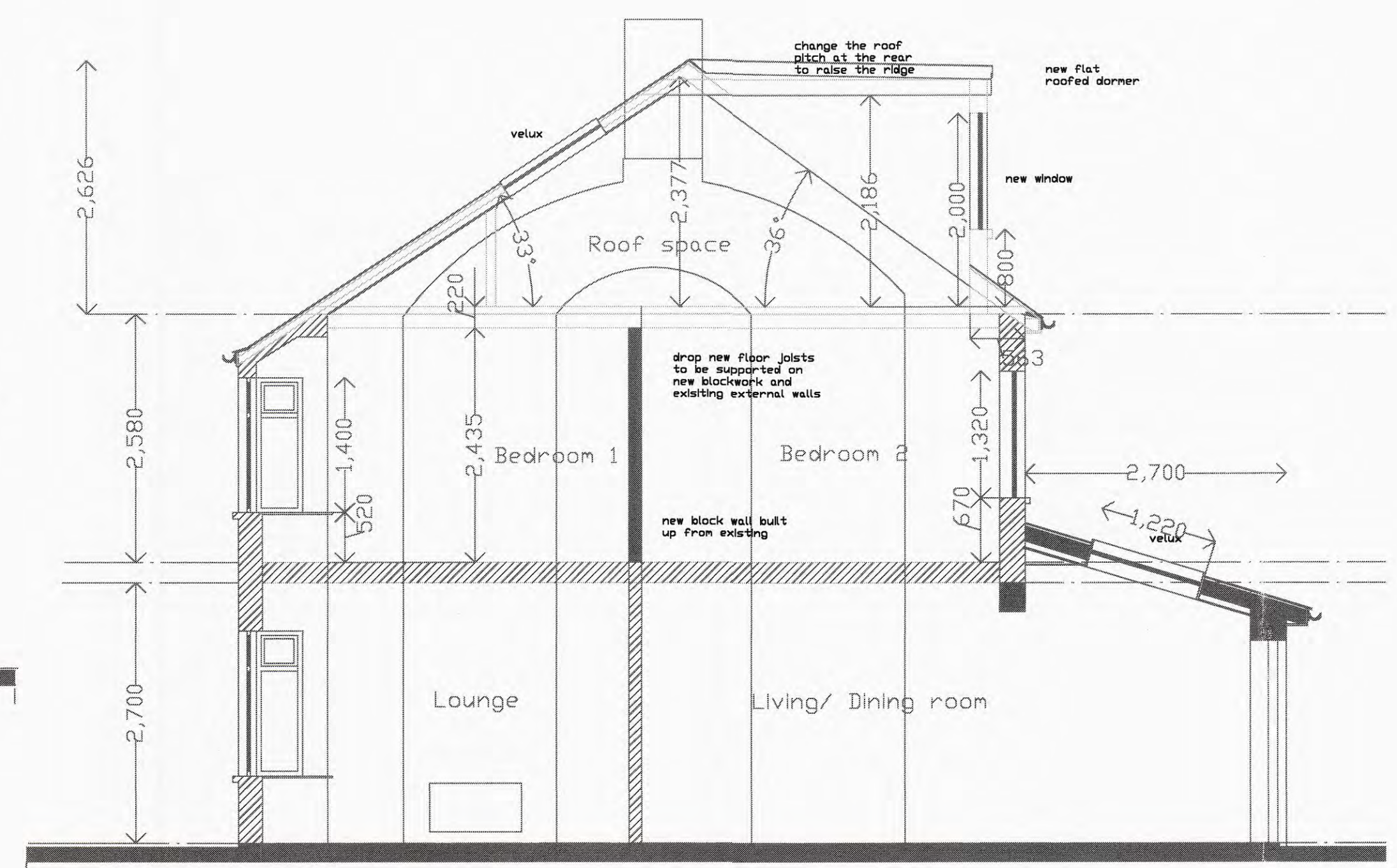


Proposed Elevation to the Rear Garden

**2022/00642/FUL**



Proposed Elevation to the Drive



Proposed Cross Section A - A

ROSSER ASSOCIATES  
 20, DUFFRYN RD.,  
 CYNCOED, CARDIFF.  
 Tel: 029 20754296

CLIENT	Penny and Andy Knight	
PROJECT	8, Mountjoy Close, Penarth, South Glamorgan	
TITLE	Proposed Elevations and Cross Section A - A	
DATE	17.05.2022	PROJECT NO. 701
DRAWN	CHECKED	P04
SCALE	1:50	





Figure 1: Applicant dwelling (right hand side) and adjoining semi (No13)



Figure 2: Image of dwelling within Mountjoy Crescent with a hip to gable alteration and rear dormer



Figure 3: Side elevation of applicants dwelling



Figure 4: Number 2 and 3 Mountjoy Close





Figure 5: Number 4 and 5 Mountjoy Close



Figure 6: Number 6 and 7 Mountjoy Close



Figure 7: Rear elevation of applicants dwelling, image taken from No7 side elevation window



Figure 7: Side elevation of applicants dwelling, image taken from No7 principal elevation window which serves a bedroom





Figure 8: side elevation of the applicants dwelling from within Mountjoy Close, the image also includes the driveway of No7