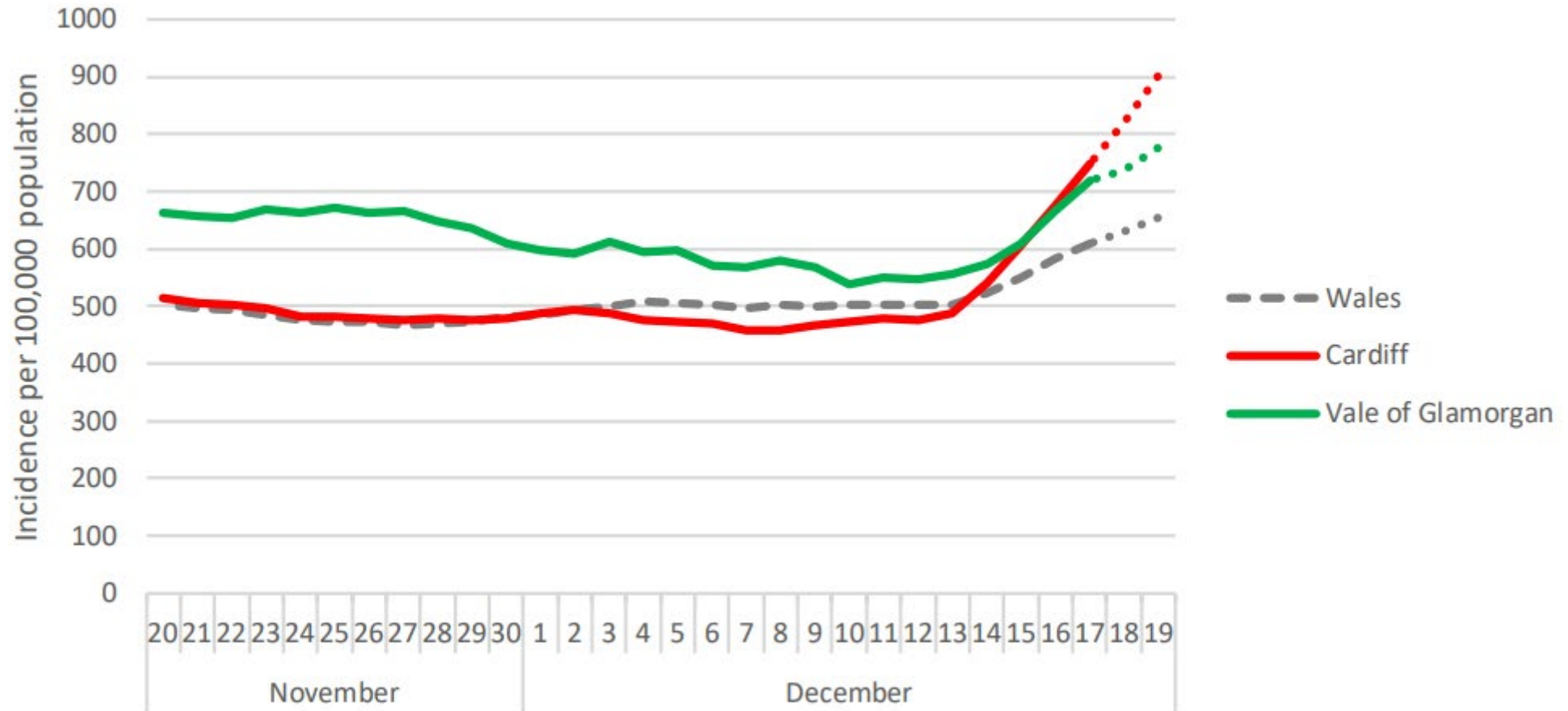


Latest Covid-19 position in the Vale of Glamorgan

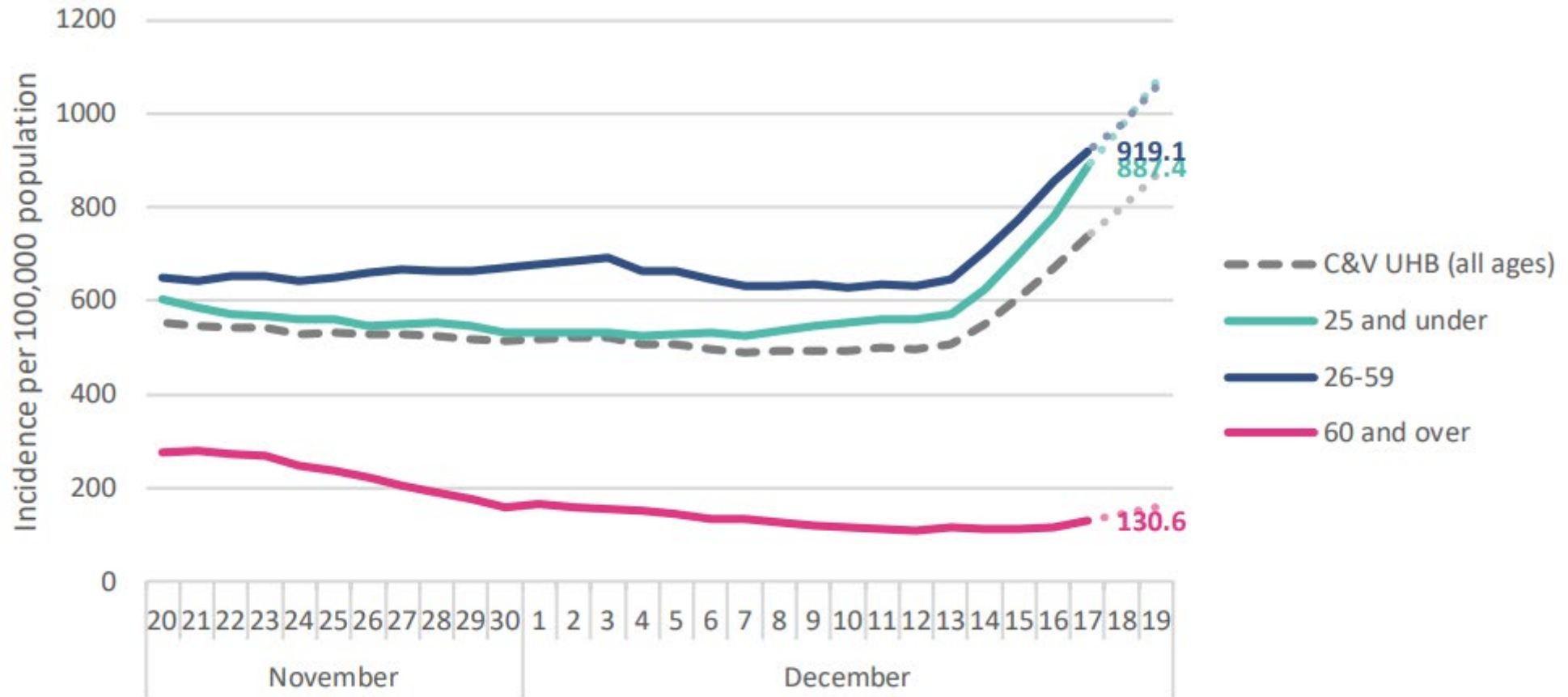
Dr Tom Porter

Consultant in Public Health Medicine
Cardiff and Vale UHB/Public Health Wales

Overall case rate



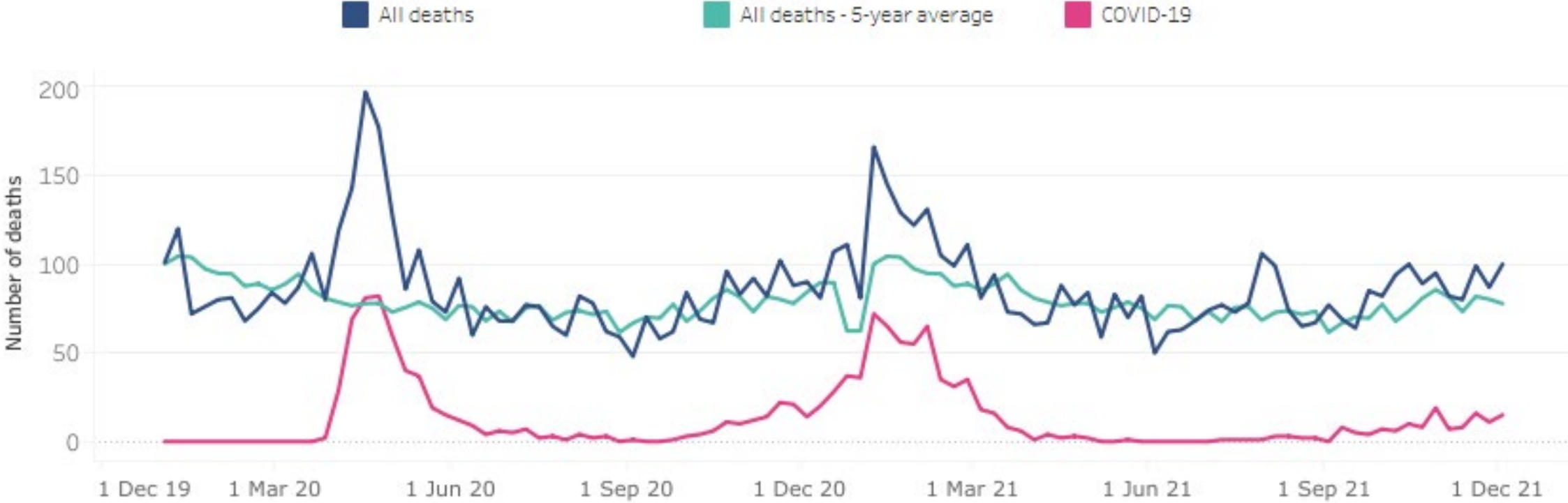
Cases by age group



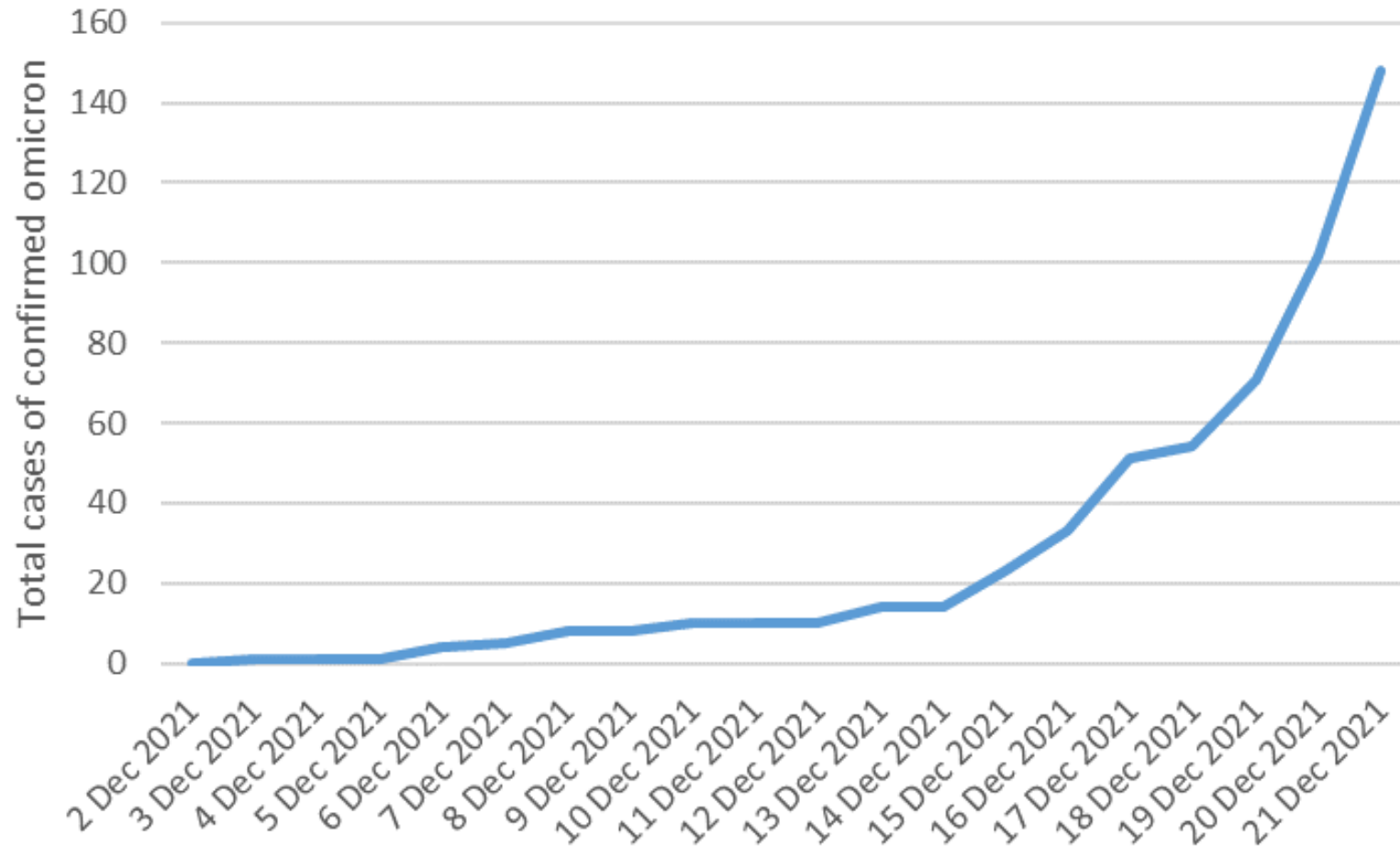
Hospital admissions involving Covid-19



Deaths involving Covid-19



Omicron in C&V



But...

Omicron in C&V

- SGTf is good proxy for omicron
- >80% cases likely omicron
- Now dominant variant in C&V

General trends

- Older people cases fallen significantly last few months, fewer care home clusters – impact of booster
 - But some early signs this may be starting to rise again
- Hospital admissions and occupancy falling
- Death rate relatively low, though slow increase
- More cases being picked up on lateral flow, no/few symptoms
- Large surge in cases in younger adults in last week
 - 20-29 year olds particularly
 - Also 30-39 year olds
 - Combination of: increased testing (can't explain most of trend); pre-Christmas parties and socialising; omicron

Omicron

- Very rapid spread
 - More transmissible in households than delta
 - Less immunity from previous infection
- Now dominant variant in C&V
- Severity remains unclear
 - Some clinical studies suggesting more upper airways infection, less lung infection than delta
 - Too early still to understand impact in UK context
 - Even if fewer severe complications, larger number of cases could still cause significant pressures on NHS
- Impact of self-isolation on business continuity
- Vaccination
 - Two doses not enough - reduced protection against symptoms, though good protection against serious disease and death
 - Booster/third dose improves response significantly

National response

- Accelerated booster programme <31 Dec
- General measures
 - Schools delayed start spring term, potential for remote/blended learning
 - Sports - no spectators
 - Nightclubs closed after Christmas
- Modified alert level 2
 - Reduced household mixing – advisory only
 - Rule of six in regulated hospitality environments
 - Gatherings limited to 30 (indoors) or 50 (outdoors) max
 - Stricter measures in place in businesses
- Omicron management now ‘business as usual’
 - Fully vaccinated contacts under 17s don’t need to isolate but daily LFDs recommended

C&V regional response

- Booster programme
 - Everyone eligible for booster now sent appointment
 - Community pharmacy mobile unit in Vale
- Robust contact tracing mechanism in place
 - Increasing use of e-forms as case numbers increase
- Regular regional incident management team (IMT) and Leadership IMT, and daily 'birdtable' multidisciplinary review, continue

Summary

- Period of uncertainty with omicron
 - High case rates expected
 - Likely significant impact on workforce with self-isolation of cases
 - Number of hospitalisations, severity unclear – could be significant
 - Wave expected to be relatively short and peak quickly - Jan
- Booster roll-out key defence
- National measures in place to reduce transmission