

Barry Regeneration Progress Report

Environment & Regeneration Scrutiny Committee

Thursday 18th January 2018

Presentation by
Marcus Goldsworthy
Head of Regeneration and Planning
Vale of Glamorgan Council



PART 1

The Regeneration Challenge

19th Century Expansion

A unique combination

- Port / Industrial Hub
- Expansion of the Town
- Barry Island becoming a resort



Rise and Decline



Barry Island

- Holiday Camp closed in the mid-1990s

The Port

- No.1 Dock was decommissioned in the late 1980s



The Town Centre

- Impact of out-of-town retail parks; online retailing; and, loss of key anchor stores

The Regeneration Challenge (Barry c.1985)



PART 2

Our Track Record of Targeted Investment and Place Making in Barry

Our Track Record - Investment in Physical Infrastructure

- Waterfront Phase 1
 - ✓ Land Reclamation and Disposal
 - ✓ Ffordd y Mileniwm
 - ✓ Gladstone Bridge
 - ✓ Thompson Street Footbridge



Our Track Record - Investment in Housing

- Registered Social Landlord Partners (Golau Caredig, Ty Barnwr, Ger Y Mor)
- Welsh Housing Quality Standard
- The Quays – Waterfront Barry
- Housing Renewal Areas (Castleland and Main Street)
- Utilising ARBED funding to provide energy saving home improvements (Gibbonsdown and Castleland)



Our Track Record - Investment in Communities

- Town Hall/King Square/Central Park
- YMCA Barry
- Gibbonsdown Children's Centre
- Porthkerry Country Park – Forest Lodge
- Parks and Play Areas



Working with local residents and stakeholders to better understand local needs and deliver quality schemes

- ✓ Bassett Park
- ✓ Iolo Place
- ✓ Fforest Community Park
- ✓ Dryden Terrace
- ✓ Pencoedtre
- ✓ George Street
- ✓ Maslin Park



Our Track Record - Creating Employment

- ✓ BSC
- ✓ Pumphouse
- ✓ Premier Inn
- ✓ Asda
- ✓ The Quays – Waterfront Barry



The Pumphouse: focal point of Barry's waterfront development

- Apartments, cafés, restaurants, health and leisure facilities
- ✓ Academy Espresso Bar
- ✓ Hang Fire Smoke House
- ✓ Snap Fitness 24/7 Gym



Our Track Record - Investment in Tourism

- Barry Island
- ✓ Eastern Promenade
- ✓ Nell's Point
- ✓ Events
- ✓ New Link Road
- ✓ Causeway



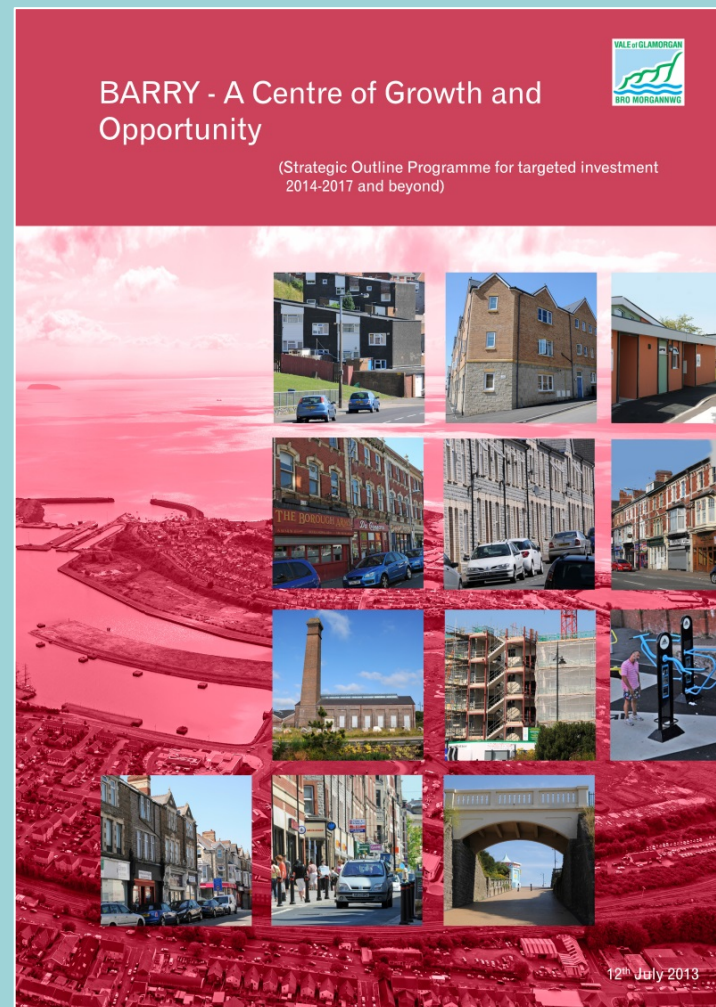
PART 3

Emerging Projects, Policies and Funding Programmes

**Drivers of Change &
Moving Forward**

Shaping the Future: Drivers of Change

- ✓ Strengthened communication and engagement so that people and groups in Barry are involved and that we all realise that there are things that can be achieved by working together
- ✓ Flexible framework of investment aims which can adapt to a changing context and seize opportunities
- ✓ Aligned to the Welsh Government's national strategy *Prosperity for All; Well-being of Future Generations (Wales) Act 2015*; and, the Cardiff Capital Region delivery themes as funding (such as Targeted Regeneration Investment) is likely to flow from these priorities in the future



Shaping the Future: Moving Forward

Key issues

- A flexible and adaptable policy direction to maximise the regenerative impact of investment
 - ✓ Proactive whole-town approach to regeneration combining the improvement to places with support for the people who live in them
- Barry's place in the Cardiff Capital Region
 - ✓ Sense of Place - what makes Barry special?
- Harnessing and adding value to private sector interest and investment
 - ✓ Barry Town Centre, Gateway Regeneration
 - ✓ Land at Nell's Point, Barry Island
 - ✓ Southern Development Site, Innovation Quarter



Shaping the Future: Moving Forward

Key issues

- Welsh Government's, Targeted Regeneration Investment for the three year period 2018/19 – 2020/21
- We are seeking to develop a programme of capital investment in the physical infrastructure of Barry with a specific focus on economic regeneration projects in Barry Town Centre and Barry Island, which support job creation, enhance employability and create the right environment for businesses to prosper
- Our Project Proposals are aspirational and demonstrate our ambition over a longer timeframe i.e. 3 years+
- We take the view that this is an evolving list of proposals for Barry, however the main elements of the proposals currently being developed are as follows:

Shaping the Future: Moving Forward

Targeted Regeneration Investment Project Proposal

Barry Town Centre Gateway Regeneration



Shaping the Future: Moving Forward

Targeted Regeneration Investment Project Proposal Barry Town Centre Gateway Regeneration

- ✓ Working closely with the Health Board, all zoned Registered Social Landlords, landowners, potential funders and investors to deliver a hub of community focused services at the west end of the Town Centre (Gladstone Road) all forming part of the new town centre mix and linking the old centres with the new development on the waterfront
- ✓ Active travel measures (with easy opportunities for walking, cycling and accessing public transport) which encourage access to and through the Dock View Road Corridor linking the Town Centre to Barry Docks Station
- ✓ Unlock the development of a key site identified in the Local Development Plan at Barry Dock Station for a mix of uses including a bus interchange
- ✓ A master plan is currently being put in place to guide the opportunities for major employment and housing growth

Shaping the Future: Moving Forward

Targeted Regeneration Investment Project Proposal
Barry Island Regional Tourism Destination



Shaping the Future: Moving Forward

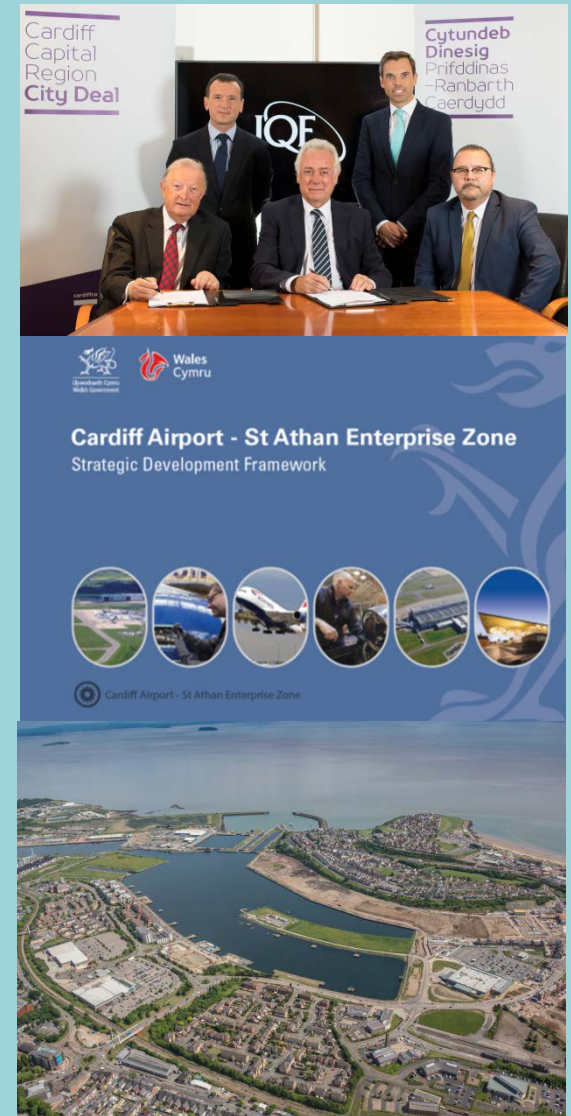
Targeted Regeneration Investment Project Proposal Barry Island Regional Tourism Destination

- ✓ The visitor experience is dominated by day visits rather than overnight stays
- ✓ For long-term financial viability, new operating models will be required to provide facilities that operate all year round rather than just in the main tourist season
- ✓ Facilities will have to appeal to a local market, which will use them in winter and other times when visitor numbers are low, but equally will need to be attractive to visitors at other times, especially during wet or inclement weather periods
- ✓ A master plan is currently being put in place to guide the marketing and development of Barry Island and further financial intervention will be necessary to unlock the potential of key sites including the possibility of partnering with the private sector to develop new or substantially refurbished leisure and tourism facilities

Shaping the Future: Moving Forward

Key issues

- Building relationships and partnerships with the promoters of nationally / regionally significant projects such as:
 - ✓ Cardiff Capital Region City Deal
 - ✓ St Athan - Cardiff Airport Enterprise Zone
 - ✓ The Quays - Waterfront Barry
- Generate greater community capacity to create and access opportunities in Barry and the wider area



Thank you for listening

Questions and Comments