

## Project Zero

Rob Thomas  
Managing Director

Tom Bowring  
Head of Policy &  
Business Transformation

**We will provide:**

- An overview of Project Zero and the Climate Change Challenge Plan
- An update on the feedback from the recent consultation exercise
- Details of the changes made to the Challenge Plan
- Information about the next steps
- The opportunity to ask questions



VALE of GLAMORGAN



BRO MORGANNWG

Emergency Declaration  
July 2019



2030 Target

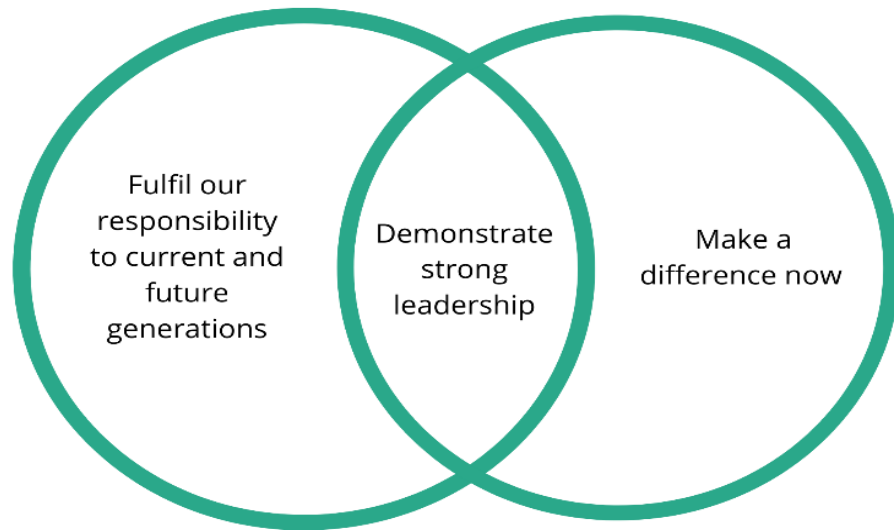


Working Together



Our Response

A number of challenges and steps have been identified to deliver **Project Zero**. These formed the basis of the consultation and are framed around the need to:



## The Plan

- Details 18 challenges and the proposed steps to meet them.
- Details work already underway which also forms part of Project Zero.
- Relevant areas include transport, waste, land, buildings, energy & food.
- Describes how the different strands fit together and the governance arrangements.

Cardiff and Vale  
University Health Board PSB Partners

Safer Vale Partnership

All Vale Town and  
Community Councils

The public

Youth services

Third Sector and  
community groups



Council networks and  
contacts

All Vale Headteachers  
and Chair of School  
Governors

Natural Resources Wales

Local businesses

Vale 50+  
Strategy Forum

Housing  
Associations



## Online Survey

**132** Survey responses  
**98%** Think the Council  
should lead by example

## Twitter



**18** Twitter polls  
**2,703** Total votes

## Zoom



**6** Zoom sessions  
**42** People booked a space on  
public sessions  
**12** Council experts presented and  
answered questions

## Food

There was strong support for:

- Buying local produce and shopping locally
- Growing your own
- More information on the environmental impact food has e.g. production, packaging, waste, and thinking about what we eat

There is also public support for the Council to have a bigger role in encouraging people to think about their food and the impact it can have.



**73% Yes - Should the Council encourage people to think about where their food comes from and the impact of our food choices on the environment?**



**89% Buy local produce from local suppliers,  
79% Planning meals before shopping in order to reduce food waste,  
67% A more plant based diet - What changes would you commit to to reduce food miles, food waste or the impact on the environment? (multiple selection)**

## Buildings

There was strong support for:

- Developing robust planning policies
- The Council working closely with developers to ensure new developments are sustainable, environmentally friendly, have access to public transport, green spaces etc
- Taking a more holistic approach to planning
- Considering materials used in new buildings and when retrofitting existing buildings

Several concerns were raised surrounding making use of and maintaining existing buildings and empty buildings.



**The existing building stock must not be forgotten.**



**83% Yes - Should building net zero carbon schools and making council homes and buildings more energy efficient be a priority for us?**

## Land

There was strong support for:

- Developing green infrastructure  
- 92% on the Twitter poll agreed green infrastructure should be a priority for the Council
- Importance of linking to the nature emergency and importance of protecting and enhancing biodiversity, ecosystem resilience and green spaces
- Tree planting, ensuring the right trees are planted in the right locations
- More allotments and community gardens
- Opportunities to learn more about nature, planting and gardening, especially for children and within communities

Concerns were raised about flooding and coastal erosion. A number of concerns were also received regarding developments on green field sites and whether the Council could be doing more to protect them.

“ Green space and green fields needs protecting... ”

## Waste

There was strong support for:

- New ideas and opportunities to encourage behaviour changes
- Working closely with community groups to promote reuse and repair including learning how to fix things
- Signposting to wider groups and services outside of the Council
- Clear information and facilities available to help encourage innovative ideas and support behaviour changes
- More information about what can be recycled and where
- Encourage the use of reusable items e.g. bags and drinking bottles
- Encouraging home composting

65% Yes - Would you be interested in attending an event or location to help you repair items from home instead of buying new?



90% Yes - Would you commit to reducing your use of single use plastics?






## Transport


There was strong support for:

- Alternative fuel vehicles
- Increasing the electric vehicle infrastructure
- Better connectivity of cycle routes
- Making cycling routes safer
- Active travel segregation
- Encouraging walking to school

Some voiced concerns on the technology used in electric vehicles and the impact the vehicles could still have on the environment. It was clear the main aim should remain on reducing the use of cars overall.

“**Desperately need safe, easy cycle routes linking towns in the Vale.**”

 **79% Yes - If there were improved active travel or public transport networks do you think this is something that could change in future?**

 **83% Yes - If the Council improved active and public transport networks, would you walk, cycle or use public transport more often?**


## Energy


There was strong support for:

- Moving away from fossil fuels
- Exploring renewable energy
- More support to help residents to become more energy efficient e.g. providing advice and opportunities
- The Council improving energy efficiency of its buildings inc. schools and housing
- Working with developers regarding requirements in new buildings

**93% Yes - Should the Council be doing more to explore new technology and innovation around energy?**



 **47% No, but I want to - Have you made changes to your home to make it more energy efficient?**

 **79% Yes - Have you made changes to your home to make it more energy efficient?**

## General

Several comments were also made outside of the themes presented. A summary of the most common feedback received is presented below:

- Important to have a robust evidence base
- Consideration needs to be given to the difference between the issues and needs that affect rural areas and more urban areas
- Support for the Council to be more ambitious
- Calls for the response to be fitting of an emergency
- Support for a Project Zero style approach for the Council to lead by example to encourage and support others
- Tackling the climate and nature emergencies will require a cross-sectoral and collaborative approach.
- Important to work with young people and schools



**98% Yes - Do you think the Council should lead by example in order to tackle climate change?**



**89% Yes - Should the Council lead by example to encourage others to make the changes to help tackle climate change?**



**98% Yes - Do you think the Council should consider environmental impacts when making spending decisions?**

- **Foreword** – Changed to Leader’s name, highlighted importance of working with the community and thanked people for getting involved
- **Our Commitment to Change (context)** – Added reference to the Welsh Government plan ‘Future Wales – The National Plan 2040’
- **Our Programme for Change** – Challenges and Actions and focus of the consultation
- **How Project Zero Works:**
  - ❖ Reference to the WG guide on reporting emissions has been added to the Insight section
  - ❖ Amended the Engagement section to reference the importance of working together
  - ❖ No changes to the governance section
- **The Case for Change** – details some of the evidence to support the need for change – no amendments
- **Glossary** – newly added to help explain some of the more technical terms

- **Engagement** – included reference to link between nature and climate change and stronger reference to community projects and ambition e.g. -  
*'Build momentum around the Climate Change Community Conversation as an ambitious campaign for change' and 'Involve Stakeholder groups and develop a green ambassadors group to shape our plans and encourage behaviour change'*
- **Communication** – emphasis on reporting the impact of changes and signposting e.g. -  
*'Report on the progress being made and the impact of the changes we make' and Signpost people to information and services within their community '*
- **Evidence** – wording amended around impact e.g. -  
*'Set meaningful targets towards reducing our negative impact on the environment'*
- **Influence** - added in reference to industry and community groups -  
*'Work with business and industry , Town and Community Councils, Community groups and the Third Sector to make a difference locally.'*

- Changed the order of some of the Challenges
- **Green Infrastructure Plan** - Reworded challenge 'Protect and enhance green and blue space, biodiversity and, ecosystem resilience and improve understanding of the importance of our natural environment' - The GI plan is now one of the actions and also added in more reference to working with the community
- **Planning** - New action 'Maximise opportunities to meet our communities need for housing, employment and services through the sustainable redevelopment of brown-field land in sustainable locations through the Local Development Plan Review commencing in June 2021'
- **Transport** - Challenge reworded 'Achieve a modal shift **away from cars** to more sustainable forms of transport with an increase in walking, cycling and the use of less polluting transport.' Active Travel action reworded 'Increase active travel (walking and cycling) and improve the transport infrastructure in the Vale through the use of Welsh Government grants to improve access, safety and the joining up of the active travel network.'
- **Economic Growth** – added reference to support local business to the wording of the challenge.

- **Food** – A number of changes to actions:
  - Work through the PSB and Food Vale to implement the Move More Eat Well Plan and to promote buying local produce and shopping locally. - **Reworded**
  - The Big Fresh Catering Company which serves nearly 2 million meals a year will take steps to further reduce it's impact on the environment.- **New**
  - Work with community groups and through the Green Infrastructure Plan to encourage people to grow their own fruit and vegetables. – **New**
  - **Flooding/Coastline – no changes**
- **Waste** – Amended challenge - Reduce **waste** and put in place the necessary facilities, services and awareness raising for a more circular economy with a strong emphasis on reuse, **repair** and recycling.' **Changes to actions include** 'Promote and signpost to community projects and services which encourage reuse and repair and a reduction in waste' (**New**) and 'Develop campaigns to change behaviour e.g. to reduce single use plastics and packaging and to increase reuse, recycling and composting' (**Amended**)
  - **Energy - additional action** 'Provide information about being more energy efficient in the home including raising awareness about grants and schemes for homeowners and tenants'

- **No changes to the actions around:**
- Procurement
- Council housing
- Schools
- Our buildings and assets
- Staff travel and our fleet
- Technology





Schools



Community Groups



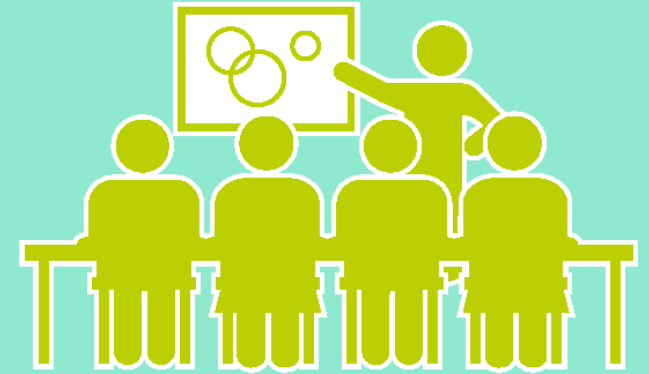
Town and Community  
Councils



The Public



- Consider the feedback and revise the Plan
- Scrutiny - 15<sup>th</sup> and 16<sup>th</sup> June
- Cabinet - 5<sup>th</sup> July
- Council - 26<sup>th</sup> July



Critical that we:

- Deliver on our commitments
- Continue the conversation – building relationships, trust and confidence
- Strengthen our evidence base – understanding the impacts e.g. through the new WG guidance
- Transform how we work