

THE VALE OF GLAMORGAN COUNCIL

ENVIRONMENT AND REGENERATION SCRUTINY COMMITTEE:
13TH SEPTEMBER, 2022

REFERENCE FROM CABINET: 9TH JUNE, 2022

**“C10 STRONG COMMUNITIES GRANT FUND (EAWL) (SCRUTINY –
CORPORATE PERFORMANCE AND RESOURCES) –**

The report provided Cabinet with an update on projects approved under the current Strong Communities Grant Programme (SCGF) for the period since April 2020 until the end of March 2022. It also provided a summary of all projects approved under the initial SCGF Grant Programme from April 2017 to March 2020.

Councillor John said the report was a good news story in that clubs, community halls and numerous groups had benefitted from funding and that even smaller funding streams could help a lot of people.

The Leader agreed that the range of organisations and projects that had been worked on and delivered were phenomenal. She applauded the skills of Officers for capacity building within those organisations and help them develop skills to be able to take their projects forward, referring to Llandough Community Council and the children’s playground in King George V Memorial Playing Fields and Ogmere Village Hall as excellent project examples.

Councillor Wilson echoed the points made by Councillors John and Burnett and was pleased that this Cabinet alongside previous Cabinets were looking to continue to support such a wide range of organisations for the longer term.

This was a matter for Executive decision.

Cabinet, having considered the report and all the issues and implications contained therein

RESOLVED – T H A T the content of the report and Appendices A and B be noted and referred the same to Scrutiny Committee (Environment and Regeneration) for consideration.

Reason for decision

To provide Cabinet and Scrutiny Committee (Environment and Regeneration) with an update on the Strong Communities Grant Fund.”

Attached as Appendix – Report to Cabinet: 9th June, 2022

Meeting of:	Cabinet
Date of Meeting:	Thursday, 09 June 2022
Relevant Scrutiny Committee:	Corporate Performance and Resources
Report Title:	Strong Communities Grant Fund
Purpose of Report:	To provide Cabinet with a Progress Report on Strong Communities Grants approved since April 2020 and a summary of projects delivered under the 2017 to 2020 SCGF programme
Report Owner:	Deputy Leader and Cabinet Member for Sustainable Places
Responsible Officer:	Rob Thomas, Chief Executive
Elected Member and Officer Consultation:	<p>Marcus Goldsworthy, Director of Place</p> <p>Phil Chappell, Operational Manger, Regeneration</p> <p>Matt Bowmer, Head of Finance/ S151 Officer</p> <p>Tom Bowring, Director of Corporate Resources</p> <p>Gemma Jones, Operational Manager Accountancy Resource Management</p> <p>Legal Committee Reports</p>
Policy Framework:	This matter is for executive decision by Cabinet.
<p>Executive Summary:</p> <ul style="list-style-type: none"> This report provides Cabinet with an update on projects approved under the current Strong Communities Grant Programme (SCGF) for the period since April 2020 until the end of March 2022. It also provides a summary of all projects approved under the initial SCGF Grant Programme from April 2017 to March 2020. 	

Recommendation

1. That Cabinet notes the content of this report and Appendices A and B and refers the same to Scrutiny Committee (Environment and Regeneration) for consideration.

Reason for Recommendation

1. To provide Cabinet and Scrutiny Committee (Environment and Regeneration) with an update on the Strong Communities Grant Fund.

1. Background

- 1.1 On April 3rd, 2017 Cabinet approved the establishment of the Strong Communities Fund. The Strong Communities Grant Fund was introduced to streamline the way in which community grant funding is managed by the Council and to encourage innovative and creative use of a range of funding to support community initiatives in line with the Council's 2016-2020 Corporate Plan Well-being Outcomes, whilst being mindful of the Well-being of Future Generations Act 2015.
- 1.2 The Council and its partners: Waterloo Foundation, Natural Resources Wales and representatives of the Town and Community Councils have joined forces to support projects which are making a real difference to the quality of life and range of services available to people and communities in the Vale of Glamorgan. Strong Communities grants approved since the initial launch of the Fund in March 2017 contribute towards the delivery of projects with an overall value in excess of £3.61 million. The scheme has also proven to be an invaluable tool in the allocation of Section 106 funding, and it has been used as a match funding source for other funds from Welsh Government and Lottery funding.
- 1.3 At its meeting on 23rd March, 2020 Cabinet approved a second funding allocation totalling £837,533 for the five-year period from April 2020 to March 2025.

2. Key Issues for Consideration

- 2.1 The purpose of the Strong Communities Fund is to enable community groups, the third sector and Town and Community Councils to apply for revenue and capital funding that promotes initiatives within the Vale of Glamorgan consistent with the Council's vision of 'Working together for a brighter future'. (Corporate Plan 2020-25).
- 2.2 The funding allocation for the current grant programme is as follows:

BUDGET	2020/21	2021/22	2022/23	2023/24	2024/25	Total
Revenue Budget	£132,000	£132,000	£132,000	£132,000	£132,000	£660,000
Capital Budget	£30,000	£30,000	£30,000	£30,000	£30,000	£150,000
Reserve (Unallocated fund)	£27,533	£ -	£ -	£ -	£ -	£27,533
Total	£189,533	£162,000	£162,000	£162,000	£162,000	£837,533

- 2.3** Delegated authority has been granted to the Chief Executive and the Head of Finance / s151 Officer, in consultation with the Cabinet Member for Performance and Resources, to make additions, deletions or transfers to the Capital Programme for Strong Communities Grant Scheme funded schemes.
- 2.4** An evaluation panel, supported by officers from a range of departments, is responsible for the evaluation of submissions for funding and comprises: Leader of the Council; Cabinet Member for Sustainable Places; one representative from a Town Council; one representative from a Community Council; one representative from the Waterloo Foundation; one representative from the Third Sector and one representative from a member organisation of the Public Services Board.
- 2.5** Eligible schemes can include those which are seeking funding to: improve the resilience of organisations or their activities by funding activities which add value to their current work and reduce their reliance on grant funding in the future; or provide seed corn funding towards initiatives that can demonstrate longer term sustainability; undertake consultation, feasibility, design and other specialist work to develop proposals for future activity and funding bids; meet the capital costs of schemes by purchasing plant, machinery, equipment or other assets or undertaking maintenance work that would enable viable services to be provided, for example, through increased income generation opportunities.
- 2.6** Since the Strong Communities Grant fund was launched in 2017, grants totalling £1,154,672.95 have been awarded to 120 projects across the Vale of Glamorgan. The Council's long-term commitment to continue this support with a new five-year allocation of £837,533 until April 2025 coincided with the start of a period of unprecedented change for people living and working in the Vale. In response to the outbreak of the pandemic, communities across the county stepped up to the challenges presented, by rapidly developing innovative and effective projects which support some of the Vale's most vulnerable residents.
- 2.7** In 2020, the allocation of £50,000 from the Strong Communities Grant Fund to a dedicated Vale Heroes Fund signalled a tide of community action to address urgent priorities triggered by the pandemic. Strong Communities grants supported 23 Vale Heroes projects, ranging from provision of basic equipment for emerging Covid-19 support groups to funds for a small army of volunteers to sew much needed scrubs for care homes. Through the grant scheme, funding of wi-fi enabled tablets for loan via libraries and support for local radio ensured that

communication channels remained open to those most at risk of isolation. Several organisations recognised the potentially damaging effects of lockdown on children and young people and responded by using grant support to bring their services online.

- 2.8** While community venues and activities were forced to close, many groups used this time to develop ambitious plans for growth. Several of these projects are now coming to fruition. Many focus on the important work of expanding the range of community services and activities on offer. However, 2021 also saw a welcome move towards projects that address, either directly or indirectly, the climate and nature emergency, in line with the council's Project Zero commitment.
- 2.9** It is evident that the pandemic has not deterred the Vale's vibrant and active communities. Groups across the Vale of Glamorgan continue to be dedicated to making positive changes in the areas where they live. Through the fund, successful groups have fulfilled the SCG eligibility criteria to deliver projects which have demonstrated engagement with their communities and meaningful sustainability.
- 2.10** Appendix A is the latest March 2022 Progress Report which lists successful applications to the current Fund since it was re launched in April 2020. It includes an outline of each project and provides a snapshot of progress made by the end of March this year towards bringing each to fruition.
- 2.11** Appendix B is a February 2020 Progress Report summarising all projects approved under the initial fund allocation for the period between August 2017 and March 2020. The report was nearing completion as the Covid-19 outbreak signalled a rapid reallocation of staff resources. The report outlines the state of play in February 2020 but contains a foreword highlighting further progress made by applicants in the period between March 2020 and the end of March this year. The vast majority of these projects have now been successfully completed. These organisations are to be commended for their resilience and determination in delivering their projects through some of the most challenging periods of the last two years.

3. How do proposals evidence the Five Ways of Working and contribute to our Well-being Objectives?

- 3.1** The proposals are consistent with the Well-being of Future Generations (Wales) Act 2015 which requires the Council to contribute to the national Well-being Goals and to work in line with the sustainable development principle. These proposals seek to develop the Council's approach to the five ways of working with a focus on the collaboration and long term (with community groups and other organisations) and involvement (of the public in decision making).

- 3.2** The proposals are consistent with the Council's 2020-2025 Corporate Plan vision of 'Working together for a brighter future' and associated wellbeing outcomes. Working with the Voluntary Sector, Town and Community Councils and community groups is a key aspiration within the Council's transformational change programme, Reshaping Services.

4. Resources and Legal Considerations

Financial

- 4.1** The allocation of funding for the Strong Communities Grant Fund is as follows:

BUDGET	2020/21	2021/22	2022/23	2023/24	2024/25	Total
Revenue Budget	£132,000	£132,000	£132,000	£132,000	£132,000	£660,000
Capital Budget	£30,000	£30,000	£30,000	£30,000	£30,000	£150,000
Reserve (Unallocated fund)	£27,533	£ -	£ -	£ -	£ -	£27,533
Total	£189,533	£162,000	£162,000	£162,000	£162,000	£837,533

- 4.2** In addition to the above, the Strong Communities Grant Fund can access Section 106 funding should this be appropriate use of that source of funding to support Community Facilities or Public Open Space schemes. Where any schemes could make use of Section 106 funding, this will be agreed through established procedures and reported back to the evaluation panel in due course.
- 4.3** The Council has committed funding per annum for a five-year period from 2020/21 in order that any bids approved spanning more than one financial year (or approved mid-way in a year) can continue. Previously it was agreed that any underspend on the grant fund in a financial year could be "rolled-forward" so as to increase the funding available for the next financial year and it is intended that this should continue.

Employment

- 4.4** There are no direct employment implications associated with this report. The administration and involvement of Council officers in the scheme will be met from within existing resources.

Legal (Including Equalities)

- 4.5** There are no direct legal or equalities implications arising from this report.

5. Background Papers

<https://www.valeofglamorgan.gov.uk/en/working/Business-Support/Strong-Communities-Grant.aspx>

[Approval to create the Vale Heroes Crisis Grant Fund - Emergency Powers Approval - 22nd April, 2020](#)

[Strong Communities Grant Fund, Report of the Leader, Cabinet, 29th September, 2021](#)

[Strong Communities Grant Fund, Report of the Leader, Cabinet, 7th September, 2020](#)

[Strong Communities Grant Fund, Report of the Leader Cabinet, 23rd March 2020](#)

[Strong Communities Grant Fund, Report of the Leader, Cabinet, 18th March 2019](#)

[Strong Communities Grant Fund, Report of the Leader, Cabinet, 1st October 2018](#)

[Strong Communities Grant Fund, Report of the Leader, Cabinet, 26th March 2018](#)

[Strong Communities Grant Fund, Report of the Leader, Cabinet, 20th November, 2017](#)

[Strong Communities Grant Fund, Report of the Leader, Cabinet, 3rd April, 2017](#)

[Strong Communities Grant Fund, Voluntary Sector Joint Liaison Committee, 8th February, 2017](#)

[Reshaping Services Programme - Grants to Community and Voluntary Organisations, 31st October, 2016](#)

STRONG COMMUNITIES GRANT FUND

Progress Report - March 2022



Cronfa
Grant
Cymunedau



Strong
Communities
Grant Fund

Contents

OVERVIEW	4
Overview March 2022	4-5
APPROVED GRANTS.....	6
List of approved grants March 2022	6-7
INFOGRAPHIC	8
At a glance - performance to date	8
PROJECT DETAILS	9-46

GRANTS OF BETWEEN £3,001 and £25,000

1 st Penmark with Porthkerry Scout Group	9
Barry Town Council	10
Benthyg	11
Bro Radio	12
Cadogs Corner	13
Cardiff and Vale Scouts.....	14
Colwinston Community Council	15
Cowbridge Tennis Club	16
Innovate Trust.....	17
Llandough Community Council	18
Llandough Village Hall	19
Llantwit Major Town Council.....	20
Penarth Town Council	21
Rhose Community Library	22
St Peter's Church Rhose	23
Vale Cricket Club	24
Vision 21	25

GRANTS OF UP TO £3,000

Aberthin Village Hall (2 applications).....	26
Barry Central Bowling Club	27
Barry Male Voice Choir	28
Barry Romilly Bowling Club	29
Billboards Ensemble.....	30
CAOS Musical Society	31
Capel Siriol, Treoes	32

CAVRA..... 33

Cowbridge Art Group 34

Forget Me Not Chorus..... 35

Llandow Village Hall 36

Metalidades..... 37

Ogmore Village by Sea (2 applications)..... 38

Our Future Community..... 39

Peterston Community Council 40

St Athan Play Group..... 41

St Hilary Village Hall Committee 42

Vale Adaptive Cycling Club 43

Vale Cricket Club 44

Valeways (2 applications) 45

Vale of Glamorgan Brass Band..... 46

Overview: March 2022

Since the Strong Communities Grant fund was launched in August 2017, grants totalling £1,154,672.95 have been awarded to 120 projects across the Vale of Glamorgan. The Council and its partners: The Waterloo Foundation; Natural Resources Wales, and representatives of the Town and Community Councils have joined forces to support projects which are making a real difference to the quality of life and range of services available to people and communities in the Vale.

In March 2020 the Council made a long-term commitment to continue this support with a new five-year allocation of £837,533 for Strong Communities grants up to April 2025. This commitment coincided with the start of a period of unprecedented change for people living and working in the Vale. In response to the outbreak of the pandemic, communities across the Vale stepped up to the challenges presented, by rapidly developing innovative and effective projects which support some of the Vale's most vulnerable residents. In 2020, the allocation of £50,000 from the Strong Communities Grant Fund to a dedicated Vale Heroes Fund supported a tide of community action to address urgent priorities triggered by the pandemic. Strong Communities grants supported 23 Vale Heroes projects, ranging from provision of basic equipment for emerging Covid-19 support groups to funds for a small army of volunteers to sew much needed scrubs for care homes. Through the grant scheme, funding of wi-fi enabled tablets for loan via libraries and support for local radio ensured that communication channels remained open to those most at risk of isolation. Several organisations recognised the potentially damaging effects of lockdown on children and young people and responded by using grant support to bring their services online. In short, the period since March 2020 has seen a surge in initiatives that demonstrate the resilience of ordinary Vale residents at an extraordinary time.

While community venues and activities were forced to close, many groups used this time to develop ambitious plans for growth. Several of these projects are now coming to fruition. Many focus on the important work of expanding the range of community services and activities on offer. However, 2021 also saw a welcome move towards projects that address, either directly or indirectly, the climate and nature emergency, in line with the council's Project Zero commitment.

It is evident that the pandemic has not deterred the Vale's vibrant and active communities. Groups across the Vale of Glamorgan continue to be dedicated to making positive changes in the areas where they live. Through the fund, successful groups have fulfilled the SCG eligibility criteria to deliver projects which have demonstrated engagement with their communities and meaningful sustainability. Now, more than ever, by working together we can achieve the Council's vision for the Vale of 'Strong Communities with a bright future'.

‘The Strong Communities grants approved to date will contribute towards the delivery of projects with an overall value in excess of £3.61 million, all of which offer far reaching benefits to communities across the Vale.’

This Progress Report highlights projects approved since March 2020. As previously, the Fund supports ‘stand-alone’ projects but has also contributed valuable ‘match’ funding for large-scale initiatives where needed. In many cases the grant is a key component in a package of support from multiple funders which will help organisations take on new assets or secure the future of their existing assets for generations to come. Many projects will help the most marginalised residents to access support and integrate more easily into community life. Addressing isolation, whether age related, due to lack of transport, limited income, cultural barriers or lack of confidence, is a priority for many organisations we have supported.

Of the 41* applications approved since March 2020, 25 projects have been completed and a further 11 are underway. As previously, projects of any scale are encouraged, although the maximum grant is now limited to £25,000 and the application process for grant applications of up to £3,000 has been simplified. The scale of completed projects ranges from small items such as shared mowing equipment to reduce a bowling club’s running costs to refurbishment of a community hall serving a population of more than 2,000 local residents. A common theme is support for projects which bring people together close to where they live. Our grants are helping people across the Vale to access the services that they have identified as much needed, through support for training, leisure or social activities and the many organisations and volunteers who provide these.

Details of projects approved since March 2020, their progress and their impact on the local communities they support are included in this report. An infographic illustrates performance to date and explains how we have spread the word about the Fund. You can find information on all projects approved and delivered under the 2017 to 2020 Fund allocation in the Progress Report February 2020 on the Vale of Glamorgan Council’s [Strong Communities Grant Fund webpage](#). We will continue to monitor and report on successful projects for the duration of the grant programme.

**Excludes Vale Heroes Grants. A separate report on these is available to view below:*



Synopsis of Vale
Heroes Grants.pdf

APPROVED GRANTS March 2020 to March 2022

Applications between £3,001 and £25,000					
Round	Applicant	Project	Grant offer	Status	Ward
6	1 st Penmark with Porthkerry Scout Group	Refurbishment of scout hall	£21,750	Complete	Rhose
7	Barry Town Council	Mindfulness garden, Cemetery approach	£10,000	Awaiting start	Dyfan
7	Benthyg	Mobile Benthyg in the Vale	£25,000	Complete	Vale Wide
6	Bro Radio	Bro Radio in Llantwit Major	£22,798.16	Complete	Llantwit Major
6	Cadogs Corner	Refurbishment of toilets	£16,371.33	Complete	Cadog
7	Cardiff and Vale Scouts	Jubilee campsite development	£25,000	Awaiting start	Peterston Super Ely
7	Colwinston Community Council	Colwinston Old Ford environmental project	£20,000	Ongoing	Llandow / Ewenny
6	Cowbridge tennis club	Court expansion	£12,000	Awaiting start	Cowbridge
6	Innovate Trust	Insight into the Vale	£12,198.50	Complete	Illtyd
7	Llandough Community Council	Improvement to play equipment at King George V Memorial playing fields	£13,077	Ongoing	Llandough
6	Llandow village hall	Roof renewal	£20,000	Complete	Llandow
7	Llantwit Major town council	Enhancement projects for recreation field and cenotaph	£6,047.83	Ongoing	Llantwit Major
7	Penarth town council	Turner House open exhibition	£5,000	Ongoing	Plymouth
7	Rhose community library	Extension and refurbishment of library	£23,309	Ongoing	Rhose
7	St Peter's Church Rhose	Equipment for community hub	£6,831.38	Ongoing	Rhose
6	Vale cricket club	Refurbishment of showers and toilets	£14,142.80	Complete	Llandow / Ewenny
7	Vision 21	Craft at Barry	£16,000	Awaiting start	Gibbonsdown
Applications up to £3,000					
Round	Applicant	Project	Grant offer	Status	Ward
6	Aberthin Village Hall	External storage	£712.70	Complete	Cowbridge
7	Aberthin village hall	Hall refurbishment	£2,925	Complete	Cowbridge
7	Barry Central Bowling club	Green maintenance equipment	£2,940	Complete	Baruc

7	Barry Male Voice choir	Reconstruction of website	£2,000	Complete	Baruc
6	Barry Romilly Bowling club	Kitchen refurbishment	£3,000	Complete	Baruc
7	Billboard Ensemble	Radio mics	£1,320	Complete	Cadoc
7	CAOS Musical Society	Equipment	£2,960	Complete	Cowbridge
6	Capel Siriol, Treoes	Equipment	£2,890	Complete	Llandow / Ewenny
6	CAVRA	Training	£2,890	Complete	Vale wide
6	Cowbridge Art Group	Display equipment	£2,910	Complete	Cowbridge
7	Forget me not chorus	Musical sessions	£3,000	Ongoing	Vale wide
7	Llandow village hall	Events equipment	£2,849	Complete	Llandow / Ewenny
7	Metalidads	Branding and advertising for support group	£1,000	Complete	Barry wide
6	Ogmore by Sea village hall	Tables and storage trolleys	£3,000	Complete	St Brides Major
7	Ogmore by sea village hall	Seating for community hall	£3,000	Awaiting start	St Brides Major
7	Our Future Community	Sully and Lavernock Place Plan	£1017	Awaiting start	Sully
7	Peterston Community Council	Climate Action Project	£2,202	Ongoing	Peterston Super Ely
7	St Athan Play group	Play equipment	£2,016.97	Complete	St Athan
7	St Hilary village hall committee	Improvements to access	£3,000	Ongoing	Cowbridge
6	Vale Adaptive cycling club	Special needs trike	£2,950	Complete	Gibbonsdown
6	Vale Cricket Club	Club house improvements	£3,000	Complete	Llandow / Ewenny
7	Valeways	Way markers	£1,957	Ongoing	Vale wide
7	Valeways	Website	£3,000	Ongoing	Vale wide
7	Vale of Glamorgan Brass Band	Refurbishment of band room	£2,414.32	Complete	Cadoc

R6: Round 6: 7 September 2020

R7: Round 7: 27 September 2021

completed projects March 2022

ongoing projects March 2022

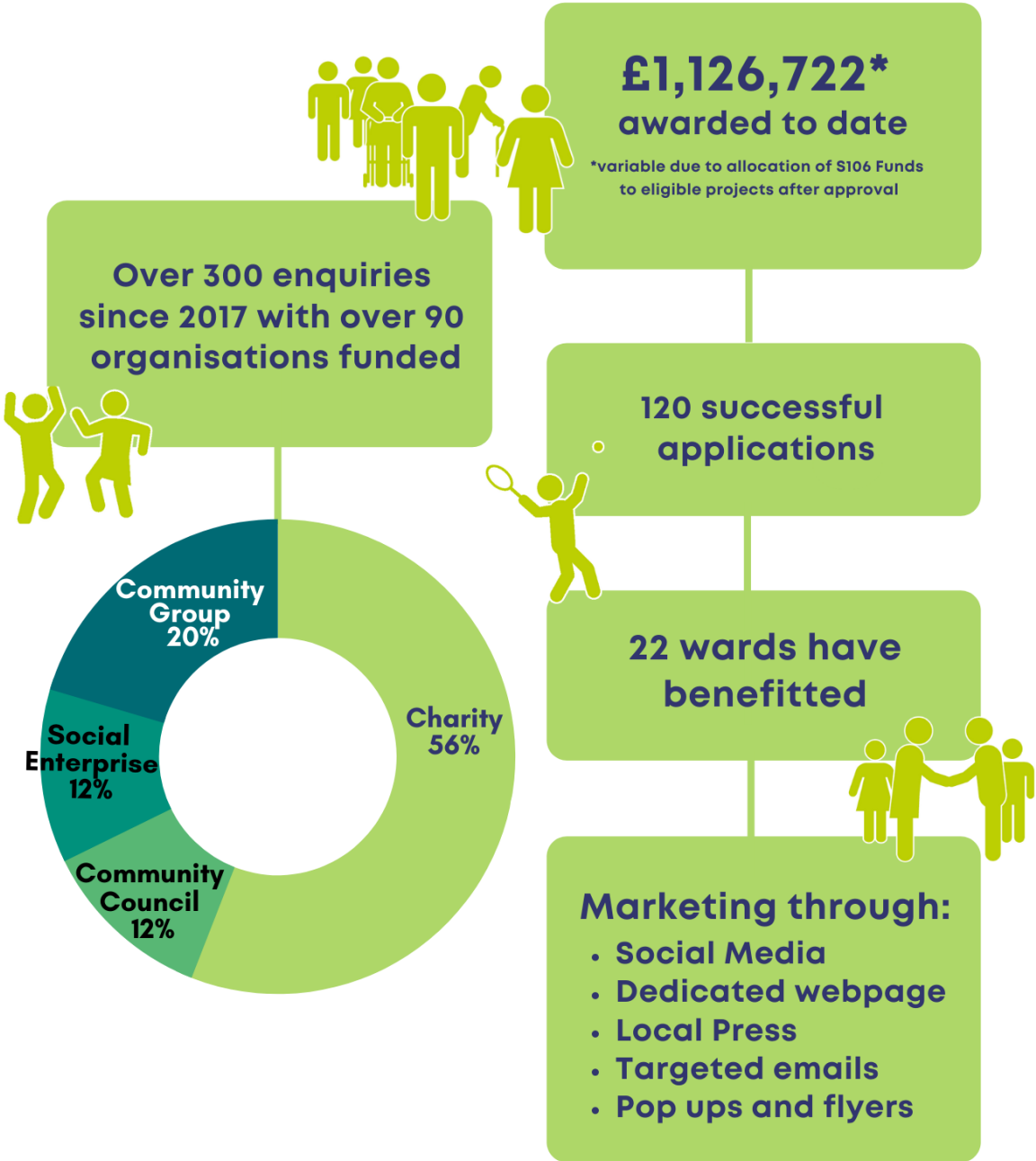
Projects awaiting start or withdrawn

AT A GLANCE – PERFORMANCE TO DATE

Cronfa
Grant
Cymunedau



Strong
Communities
Grant Fund



1ST PENMARK WITH PORTHKERRY SCOUT GROUP

REFURBISHMENT OF SCOUT HALL



Project Outline

Refurbishment included the replacement of kitchen, toilets/shower rooms, rewiring the hall and providing access for disabled people.

The Scout Group provides a programme of wide and varied activities for around 75 6-18 year olds and is one of the largest Scout Groups in the rural Vale. It serves a 48 square mile catchment area that includes villages of East Aberthaw, Fonmon, Llancadle, Llanberthery, Llancarfan, Penmark, Moulton and Rhoose, drawing membership from all villages. The much needed improvements were achieved by over 2000 volunteer hours, and invaluable help from local trades and businesses, resulting in a fantastic community space.

Progress - Completed

“It was always going to be a challenging project, which the pandemic made even more difficult, but we are proud of the result. Everyone, who has contributed to the project can look back with pride on the rewards it has reaped. We now have a warm, bright, and welcoming environment in which to providing Scouting to our community and can offer another modern communal space to the wider community.

The young people and those of us who use the facility each week cannot describe what a difference it has made to entering a hall that says, “come on in and make yourself at home”.

AT A GLANCE

Total grant: £21,750

Total project cost: £21,750

Round 6

BARRY TOWN COUNCIL

MINDFULNESS GARDEN



Project Outline

Creating a Mindfulness Garden, at Cemetery Approach Gardens, Barry. Barry Town Council, in partnership with VOGC, has recently developed the land at Cemetery Approach to provide peaceful gardens and a new Community Centre. Following community engagement, this project will transform a concreted area at the entrance to the gardens, formerly the site of an air raid shelter, into a landscaped garden for peaceful reflection. The following priorities were identified by the local community:

- A garden to remember all those affected by the pandemic, a space for those who have lost loved ones and been unable to grieve properly or attend funerals.
- The site should play tribute to its original use as an Air Raid Shelter, so information boards will be placed on site to provide visitors with historical information.

Progress - awaiting start

The project is the last part of the Cemetery Approach Gardens to be developed and will add value and complement the existing area. The site, as a whole, is open and accessible to everyone, offering all residents of Barry equal opportunity to enjoy the natural environment

AT A GLANCE

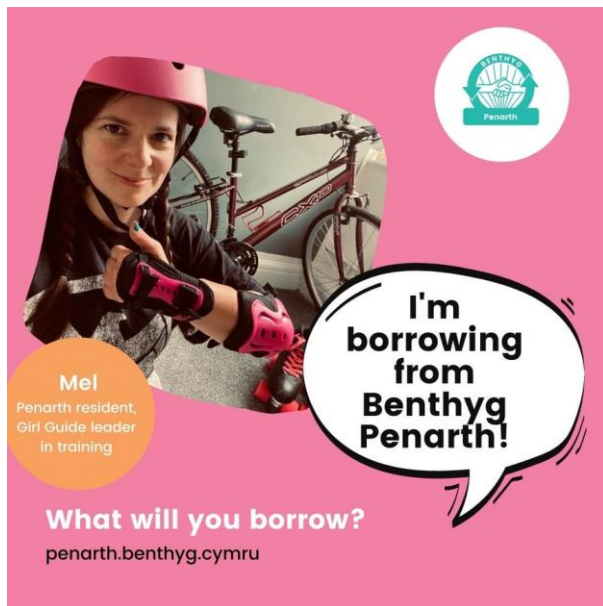
Total grant: £10,000

Total project cost: £21,295

Round 7

BENTHYG

MOBILE BENTHYG IN THE VALE



Project Outline

Purchase of an electric van. Benthyg’s mission is to operate a network of places (a ‘library of things’) where people can: access affordable borrowing of things they need but don’t own, saving money and space in their homes, donate things they own but don’t need, contributing to national waste reduction targets and meet to share knowledge and skills with each other, increasing community resilience. An electric vehicle will allow Benthyg to launch a door-to-door collection and delivery service for those unable to access venues in Penarth or Barry, run outdoor ‘pop-up’ events around the Vale, bringing repairs, borrowing and skill sharing to a wide range of residents. Collect donations for the Penarth and Barry projects from around the Vale, diverting items from landfill using a zero emissions vehicle. The mobile Vale project provides opportunity to reduce inequalities by making costly items accessible to all and by bringing separate parts of the community together to share skills.

Progress - completed

“The grant has enabled us to purchase an electric van which can be used across the Vale to extend the reach of our Benthys in Barry and Penarth.

We are looking forward enormously to working with residents in the Vale who haven’t been able to travel to our established libraries of things before. Through the delivery and collection of items to local pop ups we are hopeful that in partnership with individuals and organisations we will be supporting communities in contributing to a more sustainable way of living - sharing instead of consuming and working towards a carbon neutral future.”

AT A GLANCE

Total grant: £25,000

Total project cost: £27,800

Round 7

BRO RADIO

BRO RADIO IN LLANTWIT MAJOR



Progress - completed

“The funding from the Stronger Communities Grant has allowed us to open up our service to communities in the rural Vale of Glamorgan, making volunteering and training opportunities available to isolated individuals, whilst building our links with the local community, groups and businesses.”

The space has helped to kickstart the growth of the organisation in the rural Vale of Glamorgan, the delivery of its service and its long-term financial sustainability.”

Project Outline

Support was offered towards the cost of broadcasting, IT and general office equipment to fit out new premises for the radio station in Llantwit Major. Working with YMCA Barry, Bro Radio now operate and broadcast from the Major Music studio located in CF61 in Llantwit Major. Bro Radio is the main community radio station for the Vale of Glamorgan, providing a local radio service which aims to inform, educate, entertain and engage with the communities it serves. Studios in Barry are used regularly by a team of 60 volunteers throughout the week, to deliver programmes, with limited time and space available for new volunteers and revenue opportunities. Grant funding allows the new studios in CF61 to be fitted to professional industry standards, giving opportunities for local people in the west of the Vale the chance to participate, without traveling to Barry - which many state is a current barrier.

AT A GLANCE

Total grant: £22,798.16

Total project cost: £36,971.14

Round 6

CADOGS CORNER

REFURBISHMENT OF TOILETS



Progress - completed

CCDG deliver a diverse range of projects from the community centre including a junk food café and a fare share shipping container shop. These cover their own costs with affordable drinks, snacks and meals as well as supermarket waste food being sold on a pay as you feel basis. True Tuesdays is a weekly session for adults in the community to take part in a physical activity, to learn about healthy eating and cooking as well as supporting mental good health. In partnership with Cadoxton Primary school, the group runs a children's breakfast club from the centre.

Improving the toilet facilities will help the group to develop their enterprises further. They estimate additional income through hire for parties and other users (such as parent and toddler groups) who have previously been reluctant to hire space without baby changing facilities that will be provided through the project.

Project Outline

The grant will be used to supply and fit new cubicles, disabled and standard toilets, urinals and wash handbasins. Works include new flooring, radiators and lighting. The application was submitted by the Cadogs Corner Development Group, a community group who base most of their activities in the Victoria Park Community centre, Cadoxton, Barry. The works will benefit all users of the centre.

AT A GLANCE

Total grant: £16,371.33

Total project cost: 16,371.33

Round 6

CARDIFF AND VALE SCOUTS

JUBILEE CAMPSITE DEVELOPMENT



Progress - awaiting start

Project Outline

The project will provide new toilet facilities, showers, hot water and lights, CCTV, replacement storage containers, dry room/meeting room, tables and pizza oven. Purchased in 1957, the campsite has had little development since then. It serves the 4500 Cardiff and Vale scouts as well as 6000 others involved in scouting within an hour's drive. At present, the site does not meet the standards for young people to be able to go there and learn #SkillsforLife in large numbers throughout the year. Scouts come from a mix of backgrounds and the movement helps develop their potential from age 6 years to 25. The project is the first phase of a wider masterplan for the site's improvement. The project is the result of consultation with users and the wider scout movement to understand the needs of a campsite for the 2030's. The organisation is working with local schools with a view to potential wider community use of the site.

AT A GLANCE

Total grant: £25,000

Total project cost: £89,436

Round 7

COLWINSTON COMMUNITY COUNCIL

OLD FORD ENVIRONMENTAL PROJECT



Project Outline

Restoration of an ancient woodland and adjacent wetland area, to create and sustain an important community asset, restore an ecological site at further risk from climate change, and connect with ongoing heritage projects in the area. Key elements are the re-establishment of a pond and wetland planting, tree removal and new planting, restoration of the Medieval Well enclosure, hedge laying and coppicing, construction of a paved observation area by the Clapper Bridge and fencing to the woodland. The area has been used for many years for informal recreation by local residents. Working with the VOGC Ecologist and Coed Cymru, the Community Council and the project group have developed a project which will provide a thriving natural environment and a valuable community resource for current

Progress - ongoing

Groundwork preparation of the area to establish the pond and laying and coppicing of the boundary hedge to the Old Ford area have already been completed with the Community Council's contribution.

“The Old Ford Project has been enthusiastically welcomed by our local community and the volunteer group are about to set up a formal structure to take the work forward as the weather improves. To the delight of older residents the pond has been cleaned and restored. Planting of the area is due to start later in the month and weather permitting the stonemason will start as well. The first group of unsafe trees in the woodland have been felled with a second group of unsafe trees identified will be tackled in April.”

AT A GLANCE

Total grant: £20,000

Total project cost: £50,877

Round 7

COWBRIDGE TENNIS CLUB

COURT EXPANSION



Project Outline

The grant will contribute towards a much needed additional court including fencing and lighting.

There are no public tennis courts in or around Cowbridge. In July 2018, the club introduced an on-line system for court booking and made the facility available for public pay and play. This has allowed them to generate additional income while introducing significant numbers of new people to tennis in Cowbridge.

Progress - awaiting start

The clubhouse is used for other activities such as a regular pilates classes (open to non-members), and social events throughout the year such as a regular quiz and social gatherings again open to non-members.

The increase in courts and other improvements to facilities would also allow significantly more coaching to take place alongside fixtures, training, social and other activities held weekly at the clubhouse. This is part of a phased series of improvements which include improvements to the toilet and shower facilities to make them accessible for disabled people.

AT A GLANCE

Total grant: £12,000

Total project cost: £79,700

Round 6

INNOVATE TRUST

INSIGHT INTO THE VALE

Project Outline

The grant funded a Project officer to focus on people with learning disabilities living in the Vale of Glamorgan, helping them to stay connected with one another, keep fit, well and active, ensuring they maintain their physical and mental health and well-being. Through involvement in the project, people with learning disabilities have gained the necessary skills in digital technology that will prepare them for moving on to further learning, training and employment, thus helping to sustain their prospects for the future. This project follows a successful pilot, called Insight, started during the lockdown period.



Progress - completed

“The Strong Communities Grant helped us provide meaningful volunteering opportunities for adults with learning disabilities. The project was a safe place in which to develop skills, make new friends and build confidence. It simply wouldn't have been possible without the support that we received from the Vale of Glamorgan Council.”

“I like getting wet and dirty and laughing my socks off.”
- James, participant

'I finished college and I didn't know what to do with myself. I came here for a test and since then I've really enjoyed it. It's been the best experience.' - Shane, participant

AT A GLANCE

Total grant: £12,198.50

Total project cost: £69,850

Round 6

LLANDOUGH COMMUNITY COUNCIL

PLAY EQUIPMENT AT KING GEORGE V MEMORIAL PLAYING FIELD



Project Outline

The grant is for the purchase and installation of a metal climbing frame at the children’s playground in King George V Memorial Playing Fields. The lack of play equipment for children has been long recognised and in a community engagement survey undertaken back in 2017, residents stated that improved equipment should be a top priority. Since the arrival of a new MUGA facility there is evidence that parents are accompanying their children to the playing fields and the area is increasingly well used. The equipment will provide an opportunity for children in younger age groups to develop their physical and motor skills as well as their personal confidence and the opportunity to make friends and engage with those of a similar age.

Progress - ongoing

“The residents of the community especially young people and their parents have been delighted with the MUGA facility that was installed back in 2020. The funding of a climbing frame using a grant from the SCGF will enhance the playground equipment available for younger children and will provide an added attraction for children to participate in play. We expect the facility to be well used by children in the community”.

AT A GLANCE

Total grant: £13,077

Total project cost: £16,077

Round 7

LLANDOW VILLAGE HALL

ROOF RENEWAL



Project Outline

The village hall is an historic Victorian School transferred over to the community specifically for the purposes of supporting the local community. It is located at the heart of the village. Llandow has no shop or pub, meaning the hall is the only local community hub. In addition to the larger community events (annual fete, Christmas caroling night, bingo nights etc) it supports many small groups (e.g. Mothers Union etc) and individuals (an alternate space to ‘work from home’; internet access). Over the years the Village Hall has raised funds to patch repair the ageing roof in an attempt to prevent further degradation. This approach is no longer sustainable and the grant will provide a new roof to ensure the long term future of the hall.

Progress - completed

“The grant has meant that we have been able to save our only community space for now and into the future. As a village we are starting to be able to use the hall again, post-Covid and plan to bring more people together - something we can’t do anywhere else locally. Even during covid, having a safe, socially distanced place to support home workers has been invaluable.”

AT A GLANCE

Total grant: £20,000

Total project cost: £21,170

Round 6

LLANTWIT MAJOR TOWN COUNCIL

ENHANCEMENT PROJECTS FOR RECREATION FIELD AND CENOTAPH



Progress - ongoing

“Thank you so much for the new signs. Visiting tennis teams now know how to get into the car park / tennis courts when they come to play matches. The new signage will publicise our Club and we hope encourage new members to join the Club” Member of the Tennis Club Committee.

“The new signs have replaced an old Rugby Sign. The new signage clearly displays all the sporting facilities available to play on the Recreation Field and for use by our local community and tourist visiting the town.” Town Council Staff

Project Outline

The grant will support 3 projects aimed at enhancement of the Cenotaph and recreation field. Each demonstrates a commitment to working with and for the communities in Llantwit Major. **Project 1:** Two Memorial Benches at the Cenotaph will replace existing. This area is the central hub for the community, for commemorative events, a meeting point for the cycling community as well as a place of remembrance and reflection. **Project 2:** Adult outdoor gym equipment at the recreation field will supplement existing which is popular with teens and adults. The aim is to promote the recreation ground as a hub of sporting activity, where non team-based activities are also encouraged **Project 3:** Additional signage at the recreation field. Visitors to the sports clubs here have commented on lack of visibility. New prominent signs will help to help to raise awareness of the town’s important social/recreational facilities that encourage regular exercise and promote mental wellbeing.

AT A GLANCE

Total grant: £6,047.83

Total project cost: £8,063

Round 7

PENARTH TOWN COUNCIL

TURNER HOUSE OPEN EXHIBITION



Progress - ongoing

“The SCGF has allowed us to confidently deliver the Turner house Open Exhibition and embed it as part of Penarth’s annual cultural calendar. In our first year we were able to attract over 200 applications with a total of 67 selected Artists. SCGF Funding will enable us to fully maximise the use of the venue during this period and ensure that this project provides a platform for as many people in the local community as possible. By allowing us to purchase specialist tools and exhibition equipment we have been able to ensure an excellent standard of curation for all exhibitions in the gallery, not just for the Open Exhibition and we are now able to accommodate a wider range of artworks than was possible in 2021. The dates for the 2022 Open Exhibition have been set for the 4th of August - 11th of September with information on how to get involved released shortly.”

Project Outline

The Turner House Open Project: The grant will provide a contribution towards equipment, staffing, marketing and workshops to facilitate an annual, month long exhibition of artwork by local residents. The reopening of The Turner House gallery took place on 20th May, 2021 and saw over 900 visitors in the first 3 weeks of opening. The project ensures that a space is ringfenced for an annual period of activity for residents to exhibit new work as a whole community. As an open call exhibition, using established networks, the project will highlight and showcase the local talent within the community. The format is intended to encourage more people from marginalised parts of the community to engage with arts and culture.

AT A GLANCE

Total grant: £5,000

Total project cost: £12,500

Round 7

RHOOSE COMMUNITY LIBRARY

EXTENSION AND REFURBISHMENT

Project Outline

Grant will contribute towards a new extension to the library to provide flexible meeting/training spaces for community use. The extended library to will have increase community hiring capacity, events and teaching and training opportunities as well as fund raising capacity. The extension will include a second accessible toilet and full kitchen, making it more attractive to a wider range of users. Rhoose's population is growing in size with new housing developments and a new primary school boosting demand for up-to-date modern facilities and services. The library will expand opportunities for reading, literacy, ICT development and also provide coworking facilities. The project is the culmination of several years of volunteer effort and extensive community engagement. The approved project reflects the range of ideas expressed and provides the flexible space and other facilities prioritised by local people in Rhoose.



Progress - ongoing

“The Strong Communities Grant Funding has been essential to our plans to deliver improved facilities and services to the people of Rhoose and the surrounding villages. We were pleased to have the benefit of the team providing essential guidance, support and advice that has helped Rhoose Community Library transform our ambition into action”

AT A GLANCE

Total grant: £23,309

Total project cost: £221,924

Round 7

ST PETER'S CHURCH RHOOSE

EQUIPMENT FOR COMMUNITY HUB



Progress - completed

“This grant has meant that we can take the project from an extended building to a hive of activity for the community. The counselling room will be a comfortable place for quiet and private conversation, and may also be used by Health visitors who have requested a local space to help women with breastfeeding, the dividers and Dementia cafe equipment will help us create a safe and regular space for people with dementia and their carers to interact meaningfully with others and the equipment for the toddlers and youth will provide quality activities (rather than equipment which is old and tired and not fit for purpose any more)”.

Project Outline

The grant is for the purchase of equipment to fit out the new extension to St Peter's Church, for use as a community hub. The items funded include a room divider, refurbished laptops and printer, play equipment, a dementia activities pack, storage cupboard, table tennis table, armchairs and coffee table. The hall already hosts several community activities including a weekly parent and toddler group, community choir, art group, guides, rainbows, and youth club. The extension will expand the services on offer to include a community café which will host a monthly dementia cafe, a job club and life skills training, along with free internet use and support for users provided by volunteers.

AT A GLANCE

Total grant: £6,831.38

Total project cost: £6831.38

Round 7

VALE CRICKET CLUB

REFURBISHMENT OF SHOWERS AND TOILETS



Project Outline

The main grant is funding much needed new toilet facilities. The Club was built in 1998. Although fit for purpose when the club was built back in the 90's and cricket was a game played predominantly by adult males, the game now has a much wider appeal and is played by girls and boys from five years up. In the last three years Vale CC has started a women and girls' soft ball team which competes against other ladies teams. The club also hosts Cardiff University Ladies Cricket Club (CULCC) who play their home games at Vale CC and practice here. It is now common for teams to play with male and female members and separate changing room facilities will provide facilities for female players. The club also provides a popular venue for the local community to use for events and functions, with a volunteer base of over 20 administrators and junior coaches.

Progress - completed

Vale Cricket Club have received two grants from the Vale of Glamorgan SCGF project. The first allowed the club to refurbish our toilet facilities and install six individual shower cubicles. In addition to this the club received funds to improve our WIFI coverage, purchase a projector and furniture to help the club set up a co-working pilot and provide improved training and meeting facilities. These grants have helped the club to grow its membership, improve our facilities, attract new community groups and make the club more sustainable.

AT A GLANCE

Total grant: £14,142.80

Total project cost: £15,116.32

Round 6

VISION 21

CRAFT AT BARRY



Progress - ongoing

“The grant we received through the SCGF will allow V21 the opportunity to provide more learning opportunities for people with a learning disability in the Vale of Glamorgan. It will support our service users to build, not only employment skills, but soft skills as well. Skills such as teamwork, using initiative and communication. It will also enhance self-confidence and self-esteem in those most removed from society”.

Project Outline

The grant will contribute towards the cost of running a new flexible craft project based at the Vale Enterprise Centre in Barry. The grant will help fund the salary of a project coordinator, rent of the unit for one year, marketing, start-up equipment and materials.

V21 already works at the heart of the community alongside social services in the Vale to support people with a learning disability. The project will incorporate different elements of their existing work including basic woodworking (making of Fairy houses, Christmas decorations, etc.) aspects of online retail (taking photographs of products and uploading them onto the sales platform), horticulture (wreath making, table decorations, etc.) and card making and paper decorations. The new project will explore more work around textiles and the upcycling of old clothes and materials. The project will enable people to build new skills and practice existing ones, with the focus on building the softer skills everyone needs to function within the world.

AT A GLANCE

Total grant: £16,000

Total project cost: £35,650

Round 7

ABERTHIN VILLAGE HALL

EXTERNAL STORAGE, NEW CEILING AND LIGHTING



Project Outline

The Village Hall committee was awarded 2 small grants in 2020 and 2021. The hall hosts numerous entertainment events as well as a number of regular users including Arty Cooks, Bridge Club, Ball room dancing and Pilates classes. Each of these groups have regular attendees and bring approximately 70-90 weekly users together, across a wide range of ages. In common with many village halls, storage space was minimal and restricting space for users. The solution was to provide a secure shed to house tables, chairs, ladders and other equipment needed by the hall users as well as gazebos for fundraising events. Volunteers erected the shed to keep costs down. A further grant funded replacement of an outdated suspended ceiling and installation of new energy efficient lighting. Both projects have helped to make premises sustainable for the future.

Progress - completed

“Aberthin Village Hall supports an active community, supporting all age groups. Consequently, having a presentable environment is essential. Having recently redecorated the main hall, the 30 year old suspended ceiling was looking drab and untidy. With the help of this grant we renewed not only the old tiles but the old florescent lighting strips with efficient LED lighting units. The work has brightened the hall and helped with reducing utility costs for the future”

AT A GLANCE

Total grant: £712.70 & £2,925

Total project cost: £1,101.94 & £3,052.78

Round 6 & 7

BARRY CENTRAL BOWLING CLUB

GREEN MAINTENANCE EQUIPMENT



Progress - completed

“Barry Central Bowling Club are a small club in Barry and we could not afford to have a private company come in and maintain our Bowling Green. The SCGF Grant enabled us to purchase secondhand machinery and new machine reels to maintain the Bowling Green ourselves. Without this help the club would not have been able to maintain its required standard of Green Playability and would have been forced to close”.

Project Outline

Following the passing of the management of the club from the Council to the club members in 2019 a grant was offered to the club to buy remaining parts of mowing equipment needed to maintain the green themselves. The main priority to keep the club up and running is the upkeep of the bowling green. If this task was given to an outside contractor to maintain the cost would be too high for the club to sustain. The grant has made it possible for the club to survive and it is working hard to attract new members, while also generating income by hiring the club house for events.

AT A GLANCE

Total grant: £2,940

Total project cost: £2,940

Round 7

BARRY MALE VOICE CHOIR

RECONSTRUCTION OF CHOIR WEBSITE



Project Outline

The grant provided a contribution to a new website for the choir which has been running since 1902. The website provides the main platform for communication with the community, also allowing people to hear recordings and keep abreast of the choir's plans and achievements. The choir has a long history of promoting the culture and heritage of Barry, a gold mine of social history in the context of Barry. In the past the choir has attracted acts several thousand stakeholders annually to concerts and a large proportion of these use the website as a channel of communication. With the loss of face-to-face activities over the last 2 years online activities such as remotely prepared videos have attracted large audiences on social media. Two-way interaction is vital for the lifeblood of the choir to remain a vibrant body for many years into the future providing service and pleasure to the community and augmenting pride in Barry.

Progress - completed

"The grant has enabled us to bring in a professional web designer to rebuild our website. The basic design is now in place. All that remains is for us to feed in information, photographs and other material to keep our followers and the wider community informed about what we do and how we do it. A lot of work. Without the grant this would not have been possible. The photo is of the choir in 2019 singing in Llandaff Cathedral in front of a packed audience in aid of pancreatic cancer research."

AT A GLANCE

Total grant: £2,000

Total project cost: £3,750

Round 7

BARRY ROMILLY BOWLING CLUB

KITCHEN REFURBISHMENT



Project Outline

The grant provides a contribution to a new kitchen. A condition report commissioned by the Council recommended this as a priority as the current kitchen was original to the building, almost 30 years old and no longer fit for purpose. In April 2019 the club was given permission to sublet the building, allowing them to encourage not only bowling but a whole host of other activities that will enhance the health and wellbeing of the community. Prior to covid the number of social members grew significantly and along with the hiring out of the clubhouse has exceeded all expectations. Investment in a well-designed and functional new kitchen enhances the range of options open to the club to expand their range of users further, attract more income and become a hub for the local community.

Progress - completed

“The project has been completed and the club members are really pleased with the outcome. I would like to take this opportunity again to thank the Vale of Glamorgan Council and the Stronger Communities team in particular for your help. It has certainly helped to attract and sustain community involvement at the venue.”

AT A GLANCE

Total grant: £3,000

Total project cost: £5,914.59

Round 6

BILLBOARD ENSEMBLE

RADIO MICS



Progress - completed

“Thank you once again for the funding, it worked a treat in our very successful pantomime, ‘Aladdin’ in December of 2021. Returning to our audiences after such a long time was so nerve-wracking but so exciting. As many other groups and organisations we were concerned about our funding due to the pandemic. The SCGF grant helped BillBoard Ensemble massively and we are very grateful. We will continue to advertise our microphones for hire in every future production.”

Project Outline

The grant has provided the organisation with radio microphones to help during the audition and rehearsal process. The mics will also be used in the multiple shows put on each year in the Vale of Glamorgan. BillBoard Ensemble are an amateur dramatics company, based in Barry, performing regularly in the Memo Arts Centre, Barry and local schools. They aim to bring West End vibe productions for a fraction of a West End ticket price. With shows such as ‘Crazy for You’, ‘Thoroughly Modern Millie’, ‘Legally Blonde’, ‘Sister Act’ and many more. These productions are solely funded by members subscription fees and public charitable events.

AT A GLANCE

Total grant: £1,320

Total project cost: £1,320

Round 7

CAOS MUSICAL SOCIETY

BRINGING MUSIC & CULTURE TO THE COMMUNITY



Progress - completed

“The radio microphones we purchased with grant worked extremely well on the night and the sound quality improvement over our previous show in 2019 with older equipment was clearly noted by our sound technicians and the audience. We have been advertising the availability of the microphones to other societies in the Vale and have had one amateur dramatic organisation approach us so far. There are still a lot of societies who are postponing their events and we will be expecting more approaches in the future. We also purchased a portable piano with the grant and this was used at a Christmas concert at the turn on of the lights in Rhoose.”

Project Outline

The grant will contribute to the cost of microphones and a key board. CAOS Musical Society draws members from across the Vale of Glamorgan and has been running since 1969 with membership open to anyone over 16, without audition. As well as putting on smaller choral concerts, a primary aim of the Society is to bring a West End style musical experience to the local area providing a chance for those unable to travel to a major city or unable to afford to do so to enjoy the pleasure such productions bring to an audience. The keyboard is being used in rehearsals, full productions and at concert venues throughout the Vale. The microphones will be used at all major productions where vocal amplification is needed to overcome the volume of the orchestral or band accompaniment. After a long absence CAOS delighted audiences with a performance of Evita in October 2021.

AT A GLANCE

Total grant: £2,960

Total project cost: £10,000

Round 7

CAPEL SIRIOL, TREOES

EQUIPPING HERITAGE HUB



Project Outline

Grant support provided the final touches to an ambitious project to transform an underused vestry into a new heritage hub for the community in Treoes. This small grant provided equipment, including TV monitor, computer, kitchen equipment, and flexible collapsible tables/chairs to allow the refurbished space to be used to its full potential.

An earlier Strong Communities Grant contributed towards the major renovation of the building, which also benefited from Welsh Government and Heritage Lottery funding.

Progress - completed

“What was once a filthy stables underneath, unused by anyone for 45 years, with a damp meeting room with only one electric heater to warm above - is now transformed into a ground floor with large disability toilet, full kitchen, lift to first floor to a fully equipped meeting room for 8/10 and a general meeting room for up to 20+. Outside we have created a small courtyard. Thank you again.”

AT A GLANCE

Total grant: £2,899.18

Total project cost: £42,99.18

Round 6

CIVIL AID VOLUNTARY RESCUE ASSOCIATION (CAVRA)

TRAINING FOR VOLUNTEERS



Progress - completed

“The Strong Communities Grant Fund has helped CAVRA to recruit and train a number of volunteers to our flood rescue team. CAVRA has also developed a resilient radio system for use in flood situations, we are currently registering a trade name and logo. CAVRA was also fully operational at an event (Brecon to Cardiff Ultra race) where the weather was absolutely atrocious with high winds and floods, 5 people were rescued and a further 24 assisted.”

Project Outline

Civil Aid Voluntary Rescue Association (CAVRA) received a grant towards the cost of training volunteers in flood water rescue. The Group works closely with local voluntary services groups as well as the Police and Fire Service during times of adverse weather such as floods and heavy snow. During 2019 to 2020 (pre pandemic), their members were responsible for rescuing 8 people and assisting a further 47. CAVRA provides support to all communities across the Vale, attending numerous sporting events throughout the area, to provide first aid cover, race support and communications.

AT A GLANCE

Total grant: £2,890

Total project cost: £2,890

Round 6

COWBRIDGE ART GROUP

DISPLAY PANELS FOR ARTWORK



Project Outline

A grant has been awarded to Cowbridge Art Group in conjunction with Cowbridge Chamber of Trade, to buy display boards with the aim of holding an annual open competition for artists from across Wales and the south West. Hosted at the Old Hall, the aim is to raise the profile of Welsh artists, particularly local ones, and exhibit the work of professional artists and students in the Cowbridge Community College. The annual exhibition will build on the Food and Music Festivals and increase footfall for the benefit of both exhibitors and businesses in the town. Aside from the annual competition, the purchase will allow Old Hall to host bigger exhibitions. In addition, the boards will be available to art groups across the Vale, where they may be used in a variety of smaller community venues enabling more people to access art close to home.

Progress - completed

“The acquisition of display boards in 2021 financed by Strong Communities has been an invaluable asset to the Cowbridge Arts Group and art groups in the Vale. They have enabled us to double the amount of exhibition space we can provide for the 2022 Cowbridge Open Art exhibition, and future events and allowed smaller groups to exhibit in locations which had no previous suitable facilities. They have already been used by the Wick art group in a 2021 exhibition and as Covid restrictions are eased, we expect them to be used by more groups as and when required.”

AT A GLANCE

Total grant: £2,910

Total project cost: £6,575

Round 6

FORGET ME NOT CHORUS

ACTIVITIES FOR CHORISTERS



Project Outline

Forget me not Chorus has used song to support those living with and alongside dementia since 2011. The grant will help fund weekly in-person activity for choristers in the Vale (rehearsing at Elfed Avenue Church, Penarth) and sessions for staff and patients connected with the Mental Health Service for Older People, at Llandough and Barry hospitals. The grant will contribute towards a project manager, music leader and pianist as well as hire of rehearsal venues. Alzheimer's Society Cymru's investigation has shown the pandemic's toll goes beyond the number of deaths from the virus. The service will specifically address sufferers, whose issues have been worsened by the pandemic by improving health and wellbeing, reducing isolation and offering an escape from the everyday caring routine for those with dementia and those that care for them.

Progress - ongoing

"I am delighted to feed back that our community choir in Penarth is meeting in-person every week and beneficiary numbers continue to increase which is wonderful news. FMNC is truly grateful for this SCGF support as we recover and rebuild our activity that was so hugely impacted by the pandemic. It is my pleasure to attach pictures of our choristers in rehearsal at Elfed Avenue - I hope these photographs will give you a real sense of the joy of a FMNC session, and the power of song to lift spirits, improve health & wellbeing and create a strong, supportive community."

AT A GLANCE

Total grant: £3,000

Total project cost: £11,825

Round 7

LLANDOW VILLAGE HALL

EVENT FUNDRAISING EQUIPMENT



Progress - completed

“The grant has meant that we have been able to save our only community space for now and into the future. As a village we are starting to be able to use the hall again, post-Covid and plan to bring more people together - something we can’t do anywhere else locally. Even during covid, having a safe, socially distanced place to support home workers has been invaluable.”

Project Outline

The village hall committee has been offered a small grant to buy equipment - gazebos, a marquee, outdoor tables and chairs. Looking ahead, they are keen to help to make themselves less dependent on grant funding by holding fundraising events within the local community. In the past the annual fete has provided a valuable source of income and the equipment will replace the now depleted stock. Project equipment would also be available to the many groups and organisations who use the village hall, ensuring benefits are maximised. In recent years, hall users have included: University of the Third Age (U3A) groups- Duke of Edinburgh groups- Guides groups- Charity-raising activities (notably Breast Cancer Care, Noah’s Ark Children’s Charity and Tros Gynnal Plant Children’s Charity as well as local private party hirers and many others either regularly booking or holding one off events.

AT A GLANCE

Total grant: £2,849.70

Total project cost: £2894.70

Round 7

METALIDADS

BRANDED MERCHANDISE



Project Outline

METALIDADS is a support network and friendship group for new and experienced fathers to share their advice and experiences. They aim to help other dads combat the challenges of addressing mental health taboo, quashing societal expectations of paternal duties and supporting an efficient family unit and home. METALIDADS is a community of Barry dads whose common ground began with a love of rock/heavy metal music. A small start-up grant has allowed the group to trademark their name, buy equipment to support awareness raising events and print literature such as flyers. To strengthen the confidence of dads they arrange events on the topics of opening up about mental health, strengthening knowledge on being a dad and looking after the community in Barry. Practical initiatives include signposting services for those suffering poor mental health, pop up 'talking shops' and regular litter picking in parks and on beaches.

Progress - completed

"The Strong Communities grant has enabled us to invest in branded merchandise, which has helped spread our logo across Barry and the Vale. On the strength of people seeing the logo we've had countless people enquire about room to accommodate their husbands/partners, to which we have opened up our support network to them and increase our membership".

AT A GLANCE

Total grant: £1,000

Total project cost: £1,000

Round 7

OGMORE BY SEA VILLAGE HALL

TABLES AND STORAGE TROLLEYS AND COMMUNITY SEATING



Progress - ongoing

"The village of Ogmores by Sea is delighted to see the realisation of a long term ambition to build a multi purpose village hall to serve our growing population. A big part of the hall's role is to provide a venue for social and community events ranging from sharing a tea or coffee after an exercise class to larger events, family celebrations etc. This would not be possible without having the necessary facilities within the hall space. We are therefore immensely grateful for our Strong Communities Grant which funded the purchase of tables, suited to all ages, including a baby changing table. It has opened up so many possibilities for our lovely new hall."

Project Outline

The village hall committee has received two small grants which help to bring their long-awaited aspiration of a new village hall to fruition. The new building replaces redundant toilets - a longstanding eyesore - with a modern community venue. The building has unbeatable views across the Channel and is the culmination of the community's efforts over several years. It has been supported through Welsh Government, Section 106 funds and Strong Communities Grants, as well as a huge community fundraising effort. The SCGF previously contributed to the building's new kitchen. Two additional small grants will now provide collapsible tables with storage trolleys and much needed seating for users.

AT A GLANCE

**Total grant: £3,000 and
£3,000**

**Total project cost: £3,075
and £3,400.13**

OUR FUTURE COMMUNITY

SULLY & LAVERNOCK PLACE PLAN



Progress - awaiting start

Project Outline

The group 'Our Future Community' was formed to bring together local people in Sully with expertise in relevant fields (e.g. economics, architecture, transportation and planning) in order to create a Place Plan. The Place Plan would provide a living document allowing residents to focus on issues that shape the future of their community. The Plan is intended to become adoptable Supplementary Planning Guidance to guide the community and County Councils when considering improvements, investment and development in order to achieve long-term sustainability. The grant will provide funds for equipment, venue hire, printing and other essentials to allow the group to continue its work in engaging the community in Sully in preparation of the Plan. The objective is to enable local knowledge and community aspirations to be realised at the very local level of planning.

AT A GLANCE

Total grant: £1,017

Total project cost: £1,383

Round 7

PETERSTON COMMUNITY COUNCIL

CLIMATE ACTION PROJECT



Progress Report - ongoing

“We are looking at ways to encourage further biodiversity at the memorial fields and encourage all users of all ages to enjoy the biodiversity that will be introduced on the field. We hope that this project will be the beginning of many where we will look at ways that we can implement ways to combat climate action and work towards Project Zero.”

Project Outline

The Community Council in Peterston aims to lead the way in taking local action to tackle the climate emergency. Their Climate Action project is taking small but important steps to enhance their natural resources and make the most of their rural assets. Funding has been granted for a project focused on the Memorial field which houses a playground, MUGA and a football pitch. Damaged fencing to the field will be replaced with a hedge to improve biodiversity. Dog fouling and littering will be tackled by providing stations that dispense 100% compostable bags free to the public. Two eco-friendly stations will replace a litter bin in the playground and the memorial field, encouraging people to take their rubbish home and recycle. The third element will see Interpretation boards installed, providing information on biodiversity meeting the challenges of climate change. Since the grant was approved, the Woodland Trust has provided a grant for hedging, freeing up funds for an accessible picnic bench near the biodiversity site.

AT A GLANCE

Total grant: £2,202

Total project cost: £2,252

Round 7

ST ATHAN PLAY GROUP

PLAY EQUIPMENT



Project Outline

Based in the Old School Hall, St Athan, the play group has been providing low cost local, safe play facilities for pre-school children in the village for 40 years.

The large housing developments due to be built locally will mean more pressure for the services provided. There is also a concern that many families with children born during lock downs will have had limited social interaction in the last couple of years, meaning there is an even greater need for the social and educational support provided. A small grant has been awarded to fund the replacement of outdated equipment with new sensory items including play mats, storytelling chairs, outdoor play equipment and a basic computer.

Progress - completed

"We are very happy with the equipment for our playgroup, it has ensured we provide a stimulating and educational experience, our children love the equipment and get a lot out of it after a couple of difficult years, this has enabled our community children to socialise and get back to normality."

AT A GLANCE

Total grant: £2,016.97

Total project cost: £2,016.97

Round 7

ST HILARY VILLAGE HALL COMMITTEE

IMPROVED ACCESSIBILITY & SAFETY



Progress - completed

“The upgraded, level access has ensured that the hall is a focal point for the village. Events and activities are more accessible and inclusive - no more exiting the hall down steps onto a narrow highway! The reopening event on March 4th saw nearly 50 villagers joining together for the traditional St David’s Supper, coincidentally this was the last event held in 2020 prior to the introduction of COVID restrictions. A joyous evening with everyone appreciative of the improved access.”

Project Outline

The project will upgrade a double door fire exit to become the new main entrance to the village hall. The current main entrance is accessed up three steep steps, from a side road where there is no footpath and this entrance is not accessible to those with mobility issues or parents with children in prams and buggies. The benefits to the community will be in allowing independent access to the hall for users such as the St Hilary WI who have an elderly membership, the monthly community café which appeals to both mothers with pre-school children and older villagers, and traditional village events such as the St David’s Supper and the Parish Lunch. In addition, the new entrance is level and not directly onto a road which will increase the safety of hall users. The grant will fund the supply and installation of new entrance doors, blocking up the old doorway and provide a storage area within the hall.

AT A GLANCE

Total grant: £3,000

Total project cost: £5,900

Round 7

VALE ADAPTIVE CYCLE CLUB

TRIKE



Progress - completed

“We purchased the special adaptive cycles and because we had new Electric bikes, more disabled people and their carers/families were able to access and enjoy the exhilaration of cycling on a regular weekly basis. Last season in Jenner Park was our most successful cycling season ever, more new beneficiaries attended, plus a lot of groups come along, do their cycling and then stay for the rest of the afternoon socialising. So the project has 2 elements, cycling and social inclusion which improves all the participants including carers/families general health and well-being.”

Project Outline

Since 2008 the club has provided specialist adaptive equipment and facilities for children, young people and adults with severe disabilities, enabling them to access sport and leisure activities regularly, increasing and improving their general health, wellbeing, independence and social inclusion.

The grant provides a Special Needs Tomcat Bullet Tricycle for young people and adults with mild/moderate disabilities, and limited mobility, enabling them to access cycling activities. Tomcat Bullet Trike is a new style trike, highly stable, lightweight, low sitting young person and adult trike, designed to be user friendly. It also has quick release two-piece frame for car transporting. The club intend to loan out the trike to beneficiaries, enabling them to participate in cycling at safe locations of their choosing, with their friends and family.

AT A GLANCE

Total grant: £2,950

Total project cost: £2,950

Round 6

VALE CRICKET CLUB

INSTALLATION OF WIFI AND EQUIPMENT



Progress - completed

“The club received funds to improve our WIFI coverage, purchase a projector and furniture to help the club set up a co-working pilot and provide improved training and meeting facilities. These grants have helped the club to grow its membership, improve our facilities, attract new community groups and make the club more sustainable.”

Project Outline

Based in Corntown, the club provides facilities for juniors, senior and women and girls to play cricket. It is also a venue for the local community to use for events and functions. The club has a volunteer base of over 20 administrators and junior coaches. The grant will fund purchase and installation of wifi cabling and a router for connection throughout the building, 10 folding meeting tables, soft seating, personal protection screens, a TV monitor stand and a projector trolley. The club is working hard to improve its meeting and community space and has established links with businesses and other potential users. Wifi will help them to attract a wide range of users and raise valuable income to help sustain the club.

AT A GLANCE

Total grant: £3,000

Total project cost: £3,000

Round 6

VALEWAYS

WAYMARKERS AND NEW WEBSITE



Project Outline

Established in 1996, Valeways priorities remain to promote health and wellbeing through walking in the Vale, to improve safe access to the Vale's countryside and to provide guided and self-guided walks for all ages and abilities. The group organise regular volunteer path-clearing each year helping maintain and to make safe 400 miles of tracks, paths, gates and stiles. The charity has been successful in securing 2 small grants: for purchase and installation of new way markers and a contribution towards developing a new website. Improved online presence is seen as vital to complement the advances the group has already made in social media output and the new site will help to improve the marketability, profile and presence of Valeways.

Progress - ongoing

"The financial support offered by Strong Communities and the assistance of the Council's PROW officers has enabled Valeways to progress the correct marking of public rights of way in the Vale. The charity receives a lot of comments from the public relating to difficulties following the routes in the Vale and also praise regarding the path marking so we feel that this project provides invaluable support to the community.

Since commissioning Maxim Consulting Services to establish the platform for our new website and other aspects of our IT capabilities, we have been making steady progress towards what we view as the first phase of the IT Renewal Project."

AT A GLANCE

Total grant: £1,957 & £3,000

Total project cost: £3,914 & £5,900

Round 7

VALE OF GLAMORGAN BRASS BAND

REFURBISHMENT OF BAND ROOM



Progress - completed

“The Vale of Glamorgan Brass Band has been serving the Community for over 45 years and our future is dependent on continuing to recruit new players. To do this we need to offer a welcoming and inclusive atmosphere. We were therefore delighted to receive a grant from the SCGF to refurbish our band room which was in serious need of attention. Funding included replacement of water damaged ceiling tiles; old lighting units for new LED panels and recarpeting the band room with reclaimed carpet tiles from Greenstream Flooring, a Community Interest Company based in Porth. The SCGF has enabled the Band to reduce its ongoing energy costs, limit its carbon footprint, upgrade a community asset and recruit 2 new players (and counting). Here’s to the next 45 years.”

Project Outline

The band, established in 1974, has occupied and rehearsed weekly at two former squash courts at the Barry Athletic Club, on Barry Island, since 2012. The group has been successful in raising their own funds to refurbish the toilets to provide disabled access and have now been awarded a grant to make the band room more welcoming and inclusive to attract and retain new players from within the community. The project included refurbishment of the roof, replacing damaged ceiling tiles, replacing the carpet with recycled carpet tiles, replacing 50 fluorescent tubes with energy efficient LED equivalents and folders to organise their key asset - music. To bring the project within the budget Band members have undertaken most of the refurbishment work therefore ensuring value for money.

AT A GLANCE

Total grant: £2,414.32

Total project cost: £3,114.32

Round 7

**Working together,
we can achieve the
Council's vision for
the Vale of Glamorgan of
'Strong Communities with
a bright future'**



STRONG COMMUNITIES GRANT FUND

Progress Report - February 2020



Cronfa
Grant
Cymunedau



Strong
Communities
Grant Fund

Foreword – March 2022

The following report was nearing completion in February 2020, as the arrival of Covid-19 signaled a period of unprecedented challenges for Vale communities. At that time, many of the projects listed in this report had yet to start or were midway to completion.

Two years later we can celebrate the remarkable resilience and determination of Vale communities in bringing to fruition the projects they developed before the pandemic. While the case studies in the report reflect the progress of projects as they stood in February 2020, a full list of projects now completed is set out below.

Of the 56 projects described in this report, the following 51 have now been completed.

Applications over £10,000

- Aberthin Village Hall project
- Barry Memo Arts Centre
- Cadogs Corner
- Colwinston play area
- Cowbridge Scout Group
- East Vale Community Transport
- GVS
- Llandough Community Council
- Penllyn Community Council
- Restorative Wales
- Romilly Bowls Club
- Wenvoe Community Hall
- Age Connects
- Barry Uniting Church
- Cadoxton Methodist Church
- Cowbridge Charter Trust
- Cowbridge Tennis Club
- Gibby Green Fingers
- Innovate Trust
- Murchfield Community Association
- Peterston Church Community Hall
- Rhoose Community Cinema
- The Intersensory Club
- YMCA

Applications between £1,000 and £10,000

- All Saints Church
- Cadoxton Conservation Group
- Coastwatch Centre, Nell's Point
- Dinas Powys Scout Group
- Lower Penarth Community Assoc
- Ogmore by Sea Village Hall
- Rhoose Community Hall
- St Brides Church Hall Committee
- The Exchange
- Treoes Community Hall
- Vale Parent/Child Homework
- Wenvoe Village Hall
- Barry Athletic Football Club
- Castleland Community Centre
- HEB
- Llansannor Village Hall
- Motion Control
- Pukka Productions
- Saron Vestry
- Sully Community Cinema
- The Memory Jar
- Ty Cadoc Residents Assoc
- Vale Plus

Applications up to £1,000

- Coed Hills
- Margaret Alexander Centre
- The Gathering Place
- Making Music in Llysworney
- Rainbow Women's Group



Contents

OVERVIEW	5
Overview as at February 2020	5
APPROVED APPLICATIONS.....	6
List of approved applications as at February 2020 (Rounds 1- 5)	6-8
INFOGRAPHICS.....	9-10
At a glance - performance to date	9
At a glance - marketing the Strong Communities Grant Fund	10
PROJECT DETAILS	11-64

APPLICATIONS OVER £10,000

Aberthin Village Hall	11
Age Connects	12
Amelia Trust	13
Barry Memo Arts Centre	14
Barry Uniting Church	15
Cadogs Corner	16
Cadoxton Methodist Church	17
Colwinston play area.....	18
Cowbridge Charter Trust.....	19
Cowbridge Scout Group	20
Cowbridge Tennis Club	21
East Vale Community Transport	22
Gibby Green Fingers	23
GVS	24
Innovate Trust.....	25
Llandough Community Council.....	26
Murchfield Community Association	27
Penllyn Community Council	28
Peterston Church Community Hall	29
Restorative Wales	30
Rhose Community Cinema.....	31
Romilly Bowls Club	32
The Intersensory Club	33

Wenvoe Community Library	34
YMCA	35

APPLICATIONS BETWEEN £1,000 AND £10,000

All Saints Church.....	36
Barry Athletic Football Club	37
Cadoxton Conservation Group	38
Castleland Community Centre	39
Coastwatch Centre Nells Point.....	40
Dinas Powys Scout Group	41
HEB - Home Education Barry	42
Llansannor Village Hall	43
Llantwit Major Tennis Club	44
Lower Penarth Community Hall	45
Motion Control	46
Ogmore by Sea Village Hall	47
Pukka Productions.....	48
Rhose Community Hall	49
Saron Vestry	50
St Brides Church Hall Committee.....	51
Sully Community Cinema.....	52
The Exchange	53
The Memory Jar	54
Treoes Community Hall.....	55
Ty Cadoc Residents Association.....	56
Vale Parent/Child Homework Club	57
Vale Plus.....	58
Wenvoe Village Hall	59

APPLICATIONS UP TO £1,000

Coed Hills	60
Making Music in Llysworney	61
Margaret Alexander Centre.....	62
Rainbow Women's Group	63
The Gathering Place	64

Overview: February 2020

Between the launch of the Strong Communities Grant fund in August 2017 and the end of February 2020, grants totaling £781,722* were allocated to 56 projects across the Vale of Glamorgan. The Council and its partners: The Waterloo Foundation; Natural Resources Wales and representatives of the Town and Community Councils have joined forces to support projects which are making a real difference to the quality of life and range of services available to people and communities in the Vale.

It is evident that the Vale has vibrant and active communities. More than 270 enquiries have been received from groups dedicated to making positive changes in the areas where they live. Through the fund, successful groups have evidenced and fulfilled the SCG eligibility criteria to deliver projects which have demonstrated engagement with their communities and meaningful sustainability. Working together, we can achieve the Council's vision for the Vale of 'Strong Communities with a bright future'.

'The Strong Communities grants approved to date will contribute towards the delivery of projects with an overall value in excess of £2.74 million, all of which offer far reaching benefits to communities across the Vale.'

The Fund supports 'stand-alone' projects but has also contributed valuable 'match' funding for large-scale initiatives where needed. In many cases the grant is a key component in a package of support from multiple funders which will help organisations take on new assets or secure the future of their existing assets for generations to come. Many projects will help the most marginalised residents to access support and integrate more easily into community life. Addressing isolation, whether age-related, due to lack of transport, limited income, cultural barriers or lack of confidence, is a priority for many organisations we have supported.

By the end of February 2020, 32 projects had been completed since the Fund launch and a further 8 were underway. The scale of completed projects ranges from purchase of a single item of musical equipment for a village of less than 100 dwellings to refurbishment of a community hall serving a population of more than 2,000. A common theme is support for projects which bring people together close to where they live. Our grants are helping people across the Vale to access the services that they have identified as much needed, through support for training, leisure or social activities and the many organisations and volunteers who provide these.

Details of approved projects, their progress and their impact on the local communities they support are included in this report. Infographics illustrate performance to date and explain how we have spread the word about the Strong Communities Grant Fund. This is the third interim report on the Strong Communities Grant Fund. Progress will continue to be monitored throughout the duration of the funding programme.

** variable figure due to Section 106 monies having subsequently been allocated to several projects, releasing more than £109,000 back into the Strong Communities Fund. Two approved projects have not progressed.*

APPROVED APPLICATIONS FEBRUARY 2020

Applications over £10,000					
Round	Applicant	Project	Grant offer	Status	Ward
R3	Aberthin Village Hall project	Building improvements – disability access/baby changing facilities	£14,800	Completed	Cowbridge
R5	Age Connects	Community support for provisions	£37,500	Ongoing	Vale wide
R2	Amelia Trust	Feasibility Study	£20,000	Awaiting start	Rhose
R4	Barry Memo Arts Centre	Destination Memo	£42,474	Ongoing	Buttrills
R4	Barry Uniting Church	The bridge between	£15,000	Awaiting start	Castleland
R5	Cadogs Corner	Refurbishment of centre	£19,021	Ongoing	Cadoc
R5	Cadoxton Methodist Church	New toilets and kitchen to hall	£25,046	Ongoing	Cadoc
R3	Colwinston play area	Children's play area	£14,000	Completed	Llandow/ Ewenny
R2	Cowbridge Charter Trust	Old Hall Gardens restoration	£26,726	Completed	Cowbridge
R4	Cowbridge Scout Group	Tools, roof insulation and internal works	£16,950	Ongoing	Cowbridge
R2	Cowbridge Tennis Club	Pay and play tennis booking system	£12,080	Completed	Cowbridge
R2	East Vale Community Transport	Replace minibus plus initiative to attract volunteers	£33,732	Ongoing	Augustines
R2	Gibby Green Fingers	Sensory garden plus educational centre on site	£16,800	Ongoing	Gibbonsdown
R2	GVS	Bring WVICC back into use and enhance provision of services	£53,094	Awaiting start	Llantwit Major
R1	Innovate Trust	Develop forest garden at Porthkerry Park	£28,059	Ongoing	Illtyd
R3	Llandough Community Council	Multi use games area	£44,634	Ongoing	Llandough
R2	Murchfield Community Association	Replace toilets and replace floor in main hall	£35,000.	Completed	Dinas Powys
R5	Penllyn Community Council	Ystradowen early years play space equipment	£16,945	Ongoing	Cowbridge
R5	Peterston Church Community Hall	Side/rear extension	£15,000	Ongoing	Peterston Super Ely
R1	Restorative Wales	Co-develop school and family focused restorative multi-	£22,879	Completed	Gibbonsdown

		agency partnership hub model for the Vale.			
R1	Rhose Community Cinema	Equipment for community cinema	£10,974.	Completed	Rhose
R5	Romilly Bowls Club	Capital works, windows and heating	£24,485	Ongoing	Baruc
R4	The Intersensory Club	Vale Adaptive cycling club	£17,520	Completed	Gibbonsdown
R4	Valeways		£26,950	Withdrawn	Gibbonsdown
R5	Wenvoe Community Library	Contribution to new building	£40,000	Ongoing	Wenvoe
R2	YMCA	Replace boilers at YMCA	£27,443	Completed	Court
Applications between £1,000 and £10,000					
Round	Applicant	Project	Grant offer	Status	Ward
R1	All Saints Church	Convert wasteland in to low maintenance garden	£2,495	Completed	St Brides Major
R4	Barry Athletic Football Club	New flooring to main pavilion	£4,896	Completed	Cadoc
R3	Cadoxton Conservation Group	Website, bug hotel and tools	£1,554	Completed	Cadoc
R2	Castleland Community Centre	Flexible booking system plus hardware	£3,522	Completed	Castleland
R5	HEB	Equipment and education support	£1,440	Ongoing	Buttrills
R4	Dinas Powys Scout Group	Extension to scout hall	£10,000	Ongoing	Dinas Powys
R3	Llansannor Village Hall	Village hall lighting, sound system and projector	£7,131	Completed	Cowbridge
R4	Llantwit Major Tennis Club	Fencing, gates and posts	£4,688	Completed	Llantwit Major
R5	Lower Penarth Community Association	New heating system	£3,398.51	Ongoing	Plymouth
R3	Motion Control	Pilot project	£4,799	Completed	Court
R5	Nell's Point Coastwatch Centre	Equipment	£1,931.98	Ongoing	Baruc
R3	Ogmore by Sea Village Hall	Village hall kitchen fit out	£6,000	Ongoing	St Brides Major
R2	Pukka Productions	Design and build new website	£3,600	Completed	Cadoc
R2	Rhose Community Hall	Replacement of windows in community hall	£5,250	Completed	Rhose

R1	Saron Vestry	Renovation of vestry	£3,267	Completed	Llandow/ Ewenny
R4	St Brides Church Hall Committee	Staircase to loft and associated works	£7,976	Completed	St Brides Major
R2	Sully Community Cinema	Equipment for community cinema	£1,857	Completed	Sully
R2	The Exchange	Marketing /professional fees to create new market hall serving Cowbridge /wider Vale.	£10,000	Completed	Cowbridge
R5	The Memory Jar	Mobii projector	£2,000	Completed	Cowbridge
R1	Treoes Community Hall	Refurbishment of Treoes Community Hall	£5,839	Completed	Llandow/ Ewenny
R3	Ty Cadoc Residents Assoc	Community gardens	£949	Completed	Cadoc
R2	Vale Parent/ Child Homework support	Support/volunteer training for homework club in St Athan/ Llantwit Major	£9,508	Completed	St Athan/Llantwit Major
R5	Vale Plus	Roll out of project in Llantwit Major	£9,640	Ongoing	Llantwit Major
R3	Wenvoe Village Hall	Access improvements	£8,146	Completed	Wenvoe
Applications up to £1,000					
Round	Applicant	Project	Grant offer	Status	Ward
R1	Cariad ar Waith	Sewing and craft for all	£1,000	Withdrawn	Court
R3	Coed Hills	Apple press	£600	Completed	Cowbridge
R2	Making Music in Llysworney	Purchase keyboard for community use.	£239	Completed	Llandow/ Ewenny
R4	Margaret Alexander Centre	Screen projector and audio equipment	£993	Completed	Buttrills
R1	Rainbow Womens group	Mini 'GEM' exercise equipment	£1,000	Completed	Buttrills
R2	The Gathering Place	Provision of lunch club for older people in /around St Athan area.	£891	Completed	St Athan

R1 – Round 1: 20 November 2017

R2 – Round 2: 26 March 2018

R3 – Round 3: 1 October 2018

R4 – Round 4: 18 March 2019

R5 – Round 5: 21 October 2019

AT A GLANCE – PERFORMANCE TO DATE



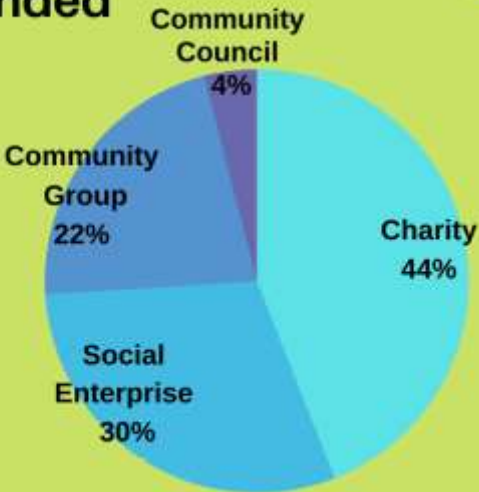
£781,722*
awarded
to date

*variable due to allocation of S106 funds to eligible project after panel approval.

Over **270**
enquiries made
since launch in
August 2017



**Organisations
funded**



56
successful
applicants



20
wards have
benefitted to date



AT A GLANCE – MARKETING

Strong
Communities
Grant Fund



MARKETING

2 paid for, targeted adverts on Facebook reaching 7918 people in total
Facebook posts on new funding rounds on Community Hub pages plus regular Facebook/Twitter posts from @ValeEconomy and @VOGCouncil advertising key deadlines and success stories

IN THE PRESS

The Gathering Place
Vale H/W Club
Murchfield Community Centre



SCGF advertised in the local newspaper

Barry & District

The Gem

SCGF logo sent out to successful applicants to use on their marketing
Re-sharing through social media pages
Details/pictures gathered for case studies

Web page created



YouTube video produced of successful applicant - Rhose Community Cinema

3 interim reports produced - December 2018 and October 2019

★ **S106** ★
funding promoted in
**DINAS POWYS
PENARTH
RHOOSE**



Presentations offered to community venues and at committee meetings
Flyers and emails sent to community venues with key deadlines
Pop-up's in Civic Offices/Docks Office reception



Promotion through stakeholders including community councils and internal service areas

Infographic and flyer sent via email with key deadline dates to 47 members



Presentation at VVACDN (Vale voluntary action & community development network) meeting
Feature in the GVS news bulletin
Direct mail to GVS staff

ABERTHIN VILLAGE HALL PROJECT

BUILDING IMPROVEMENTS



Project Outline

To improve accessibility to the hall by removing the stepped sloped path and improving the layout of the existing toilets and entrance hall to include a disabled toilet and baby changing facilities.



Progress Report – Completed

Works to the hall were successfully completed in summer 2019. The much-needed improvements mean that young families, elderly people and those with limited mobility can now access the hall more easily. Improved access and facilities mean an increased number attending events and encourages a more diverse range of users such as playgroups who don't currently use the venue due to the lack of baby changing facilities. This is providing a more sustainable income for the group and the hall. The group have already had several prospective rental enquiries, such as a children's ballet school who would benefit from this project.

AT A GLANCE

Total grant: £14,800

Total project cost: £20,025

Round 3

AGE CONNECTS

COMMUNITY SUPPORT SERVICES



Progress Report – ongoing

Age Connects has 319 volunteers who currently give their time for free to help older people. Building on the organisation's success, the project is to set up a well-being support service built around shopping, which matches individual volunteers to older people, so that there is a chance to build a relationship.

We believe that Lles Community Support Project will add considerable value to the work the charity does and will enhance the difference we make to people's quality of life. Our volunteers will be a friendly face who can also keep you informed about local events or services you might need – giving you and your family peace of mind that someone is looking out for you.

Project Outline

The grant will fund a project manager for one year to set up the support service, recruit volunteers, and manage the day to day delivery of the service. At the end of a year the service will be totally staffed by volunteers, with only the cost of high level oversight and guidance from paid staff already employed by Age Connects. The project will help to combat isolation through regular visits, provide practical help with preparing lists, delivering and unpacking shopping as well as signposting older people to the range of other support services available to them. The service has the potential to allow older people to remain independent and in their own homes for as long as possible.

AT A GLANCE

Total grant: £37,500

Total project cost: £75,942

Round 5

AMELIA TRUST

FEASIBILITY STUDY



Project Outline

To appoint a project officer on a full-time basis for three months to undertake a feasibility study including the market analysis and stakeholder consultation and engagement on the alternative uses of the building currently rented to the Local Authority's Key Stage 3 Pupil Referral Unit (Ysgol Y Daith). There is also a need to engage professional support e.g. architects, chartered surveyors, quantity surveyors and solicitors to provide advice on the best usage of the space to meet local needs and complement the Farm's existing activities, without duplicating the services provided elsewhere across the Vale.

Progress Report – awaiting start

Exploring the best future of use of under-used buildings at this much valued community venue remains a priority. The timescale for completing the feasibility study has been extended since the Council's plans to vacate the pupil referral unit have been delayed until October 2020. The study will be carried out to coincide with the revised timescale.

AT A GLANCE

Total grant: £20,000

Total project cost: £20,000

Round 2

BARRY MEMO ARTS CENTRE



Progress Report – ongoing

The Memo have recruited an excellent Outreach & Volunteer Co-ordinator on a one-year contract and the post holder is making a significant difference to community engagement and volunteer recruitment. This has enabled the centre to widen their event programme and in turn, attract a wider demographic including primary school children, special needs pupils, young adults aged 18-21 and those aged 60+. A 35% increase in attendees against 2018 has already been achieved from over 2000 pupils across the Vale and Cardiff attending the 4 screenings being presented in November. To date, 15 volunteers have been recruited, some of which are being trained for box office and administration tasks that are providing new transferable skills to support their confidence and future employment. The purchase of E-ticket scanning equipment is enabling more effective ticketing capacity and the new facility management software is currently being set up to create a more dynamic system. New IT marketing equipment is enabling new design capacity for marketing resources such as seasonal brochures which are currently in development.

“We have already seen a significant benefit in the overall capacity of our team to work more effectively, we believe this is due to the resource investments made in new equipment, software and the additional person to oversee outreach engagement volunteering. Visitor feedback has been positive, and repeated comments have been received on the quality and diversity of programmes being offered.”

DESTINATION MEMO

Project Outline

Destination Memo aims to build on the recent venue investments and support the continuation of their development plan by: promoting the venue more effectively, widening their engagement with schools, improving their audience’s visitor experience, offering a wider programme, continuing to provide affordable events for family audiences, and ultimately developing higher footfall and income generation to enable the charity’s sustainable growth.

The Memo’s development strategy is on course to increase annual visitor footfall from 100,000 in 2018 by 25% in 2019.

AT A GLANCE

Total grant: £42,474

Total project cost: £91,367

Round 4

BARRY UNITING CHURCH

THE BRIDGE BETWEEN



Progress Report – awaiting start

The Bridge Between project is still on track to raise the full amount of required funding by the end of the current financial year. £1.1m of the £1.5m has already been raised and secured. Their application for People and Places Funding has reached the second stage (£250,000) and with some smaller grants they will reach the target. The Project is currently out for Tender for a Contractor. The Changing Places facility that the grant partially supported is the biggest single item of expenditure for the Project.

“This grant has been quite critical to the project in that it has provided a link for matching funding for the total cost. The Changing Places element of the Project was considered critical for the success of the project because it expanded the number of people whose needs could be supported with activities by its provision.”

“With the Centre open by late 2020, the Changing Places facility will provide a springboard for those with significant needs to participate, explore, develop new interests, friends and skills. We are very grateful for the support from Strong Communities.”

Project Outline

Barry Uniting Church is working with Newydd Housing Association, Purple Shoots and Miss Tilley’s Community Café to build the Bridge Between Community Centre that would provide enhanced community services to the Castleland Ward of Barry (a former Community First Area), providing a new build community centre for local residents to develop services, guidance and partnership projects that open doors to new possibilities and opportunities for individuals to develop new skills and interests. The application is for a grant towards a Changing Places Accessible toilet facility within the new development

AT A GLANCE

Total grant: £15,000

Total project cost: £77,000

Round 4

CADOG'S CORNER

IMPROVEMENTS TO VICTORIA PARK COMMUNITY CENTRE



Progress Report – ongoing

Victoria Park Community Centre is located in the heart of Cadoxton close to the Primary School's nursery building and sports hall. The regular users of the hall include a School of Dance, Bingo and the Women's Institute and it is home to the Cadogs Corner Development Group. Since September 2017, the school's use of the building has increased, in particular with projects and events that involve interacting with parents or other adults.

“We have increased the number of party bookings and improving the facilities and providing easy access to the outdoor area would make the space more appealing to hirers. Better access to the garden will help us to develop the area into something the community can be proud of”.

Project Outline

The project is to refurbish and improve the Community Centre. A key aim is to maximise use an underused outdoor space by installing bifolding doors in place of the existing door height windows and a fire door. Improving the outdoor area and the access to it would increase the opportunities for developing a community garden, for widening the range of play opportunities for the parents and baby group, adult wellness group and breakfast club. Getting users outside into a garden that also grows herbs for homemade soups etc will have a positive impact on mental health and wellbeing and provide a more inviting venue for all users.

AT A GLANCE

Total grant: £19,021

Total project cost: £19,521

Round 5

CADOXTON METHODIST CHURCH

UPPER HALL REFURBISHMENT



Project Outline

The project will provide new modern accessible toilets and upgrade the outdated kitchen. The new kitchen will allow food to be cooked on site, which will help existing groups such as the guides and the multicultural café group to carry out their activities. The improved facilities should also help to attract new users seeking catering facilities.

Progress Report – ongoing

Cadoxton Methodist church hall is home to multiple local community groups including Tenovus Choir, the Vale Food bank, Brownies and Guides. Community activities are run by the church volunteers or leaders of the groups who rent the hall. Built in the 1930's, users note that the toilets are cold, damp and unsuitable for disabled people and baby changing. The hall needs investment to ensure that it continues to provide modern and attractive facilities for years to come.

“New kitchen & toilets would be wonderful and would help better meet the needs of choir members going through cancer treatment (Choir leader Barry Tenovus Sing with US Choir).”

AT A GLANCE

Total grant: £25,046

Total project cost: £37,046

Round 5

COLWINSTON COMMUNITY HALL ASSOCIATION

CHILDREN'S PLAY AREA



Project Outline

The project is to replace Colwinston's obsolete playground facilities with equipment that meets the needs of 1-12-year olds from the Village and surrounding areas. This includes St David's Church in Wales Primary School, After School Club, Youth Club, Colwinston baby and toddler group, Brownies, Guides and the children of Colwinston and surrounding areas. The existing playground has been in place for over 20 years, it came to the Village second hand from Barry and is in extremely poor condition.

Progress Report – completed

Completed in May 2019, the play area includes new swings, climbing units, slides and a wheelchair accessible roundabout. In addition to the new equipment, the play area has been completely resurfaced and new seating and bins have been installed. Jointly funded with Section 106 contributions and with building work managed by the Council, the project demonstrates the huge benefits that can be achieved when teams work together with local community groups to maximise funding and deliver a scheme that meets local needs.

“Play is a hugely important part of childhood development and the children and young people of Colwinston now have first class, accessible facilities on their doorstep”.

AT A GLANCE

Total grant: £14,000

Total project cost: £73,900

Round 3

COWBRIDGE CHARTER TRUST

OLD HALL GARDENS



Progress Report – completed

The Trust received full planning consent in October 2018, overcoming the final hurdle required to enable the project to start. Partnership funding comes from the Welsh Government's Rural Development Programme, funded by the Welsh Government and the EU. The Council's Strong Communities Grant Fund has provided vital match funding. The Trust and its volunteers have been custodians of the Town Walls and Old Hall Garden under Licence with the Council for over 10 years. The Garden has recently been awarded a Green Flag for the third year running and this project is seen as a major step in the regeneration of Old Hall Garden and its environs. *“As one of only four walled town's in South Wales, we at the Trust look forward to being able to show off some of the Town's heritage to its residents and many visitors, which has been hidden from public view for over 50 years. The Trust would like to thank the Strong Communities Fund for their support during the funding stage of the project...”*

Project Outline

This project is designed to improve access to, and usage of, important community assets: an all-weather canopy over the children's Story Space will enable year-round educational use; an electronic information board will provide interpretation 24/7; removing redundant cattle pens and years of detritus will reveal the line and castellation of the listed (Grade 2*) historic Town Wall and facilitate its restoration; a handrail will offer safe access to the ramparts; new signage will identify access points to the gardens.

AT A GLANCE

Total grant: £26,726

Total project cost:
£133,629

Round 2

COWBRIDGE SCOUT GROUP



Progress Report – completed

The money was allocated to a programme of improvements to the Scout Hall that started at the beginning of this year. The group have already paid for the replacement of a new floor, the grant money helped with the 2nd stage which includes insulation and it is now much warmer. All the interior of the hall has been redecorated, everywhere repainted including steelwork which had been peeling badly. A new room was created on the upstairs balcony for storing equipment. There is now a great new meeting room that is warm and insulated from the rest of the hall, this allows for separate meetings when the main hall is being used by other groups. It can also be used all year round, as previously in the winter it was too cold and expensive to heat the whole hall. The impact of the project has been immediate.

“We have tripled the amount of weekly/monthly bookings we are taking for other community groups to use the hall with 3 new groups booking the hall. All the existing scouting groups have agreed that it will improve their weekly activities as the space is now far more flexible. We have increased our scouting membership as new groups now want to use the hall. It will make us more sustainable as a group, as the weekly bookings mean we have another regular source of income (this means we can now pay for hall and garden maintenance). It is making the hall a really useful and pleasant space for the whole community to use. All in all, it has been a huge success, and we are extremely grateful to SCGF for considering and approving our application.”

TOOLS, ROOF INSULATION AND INTERNAL WORKS

Project Outline

The group need some key items of equipment and tools to ensure that they always have what they need instead of relying on borrowed tools.

There is a need to improve the internal decorative condition of the hall, and to install improved and new equipment to enable the group to provide a wider range of activities and make the hall more attractive to other users – this includes roof insulation and re-painting internally.

There is also a need for storage space. Dedicated storage would free up the room space for the group and other users.

AT A GLANCE

Total grant: £16,950

Total project cost: £16,950

Round 4

COWBRIDGE TENNIS CLUB

PAY AND PLAY TENNIS BOOKING SYSTEM

**PLAY TENNIS
FOR FREE**
DURING WIMBLEDON
2-15 JULY 2018

Monday to Friday 09:00-15:00
All Day Weekends*
*Subject to availability

COWBRIDGE TENNIS CLUB
The Broad Shoard, Cowbridge,
CF71 1DA

Enquire at Cowbridge Leisure
Centre Reception to Book Now
01446 403 000

Progress Report - completed

The project was completed in time to take full advantage of 2018's long hot summer. Non club members can book and pay for a court online during the many times when the courts are not being used. The club has been delighted with the popularity of the scheme, and the Sports Centre has taken an active role in promoting the courts as a facility for anyone who wants to play, regardless of ability and without needing club membership.

“The grant has helped us to record court bookings since the gate was installed in June 2018. The gate has given an easy way for the community to book courts at a time that suits them”

Project Outline

Investment in a code lock gate, a computerised management system and security fencing. Cowbridge currently has no public tennis courts. This project makes the club facilities available to the wider community and ensures they are used to maximum capacity. The project helps the club to manage and monitor all bookings efficiently. Its aim is to promote social integration through better access to sport.

AT A GLANCE

Total grant: £12,080

Total project cost: £14,109

Round 2

EAST VALE COMMUNITY TRANSPORT

REPLACEMENT MINIBUS AND CHAPERONE PROGRAMME

Project Outline

The replacement of the twelve-year-old minibus currently in use and a new initiative to attract volunteer chaperones.



Progress Report – ongoing

EVCT are now proud owners of a new 6-seater minibus named Donnie after one of the group's founding members! The vehicle has a customised wheelchair lift, the new minibus is larger than the previous one meaning that more groups can be supported. Following approval, local members agreed that the project could be supported through Section 106 funds, releasing money back to the Strong Communities Grant pot.

“Having a larger, newer minibus means that we have been able to provide our members with opportunities to access social activities which they may not have had otherwise”

AT A GLANCE

Total grant: £33,732

Total project cost: £43,732

Round 2

GIBBY GREEN FINGERS

SENSORY GARDEN PLUS EDUCATIONAL CENTRE ON SITE



Progress Report – ongoing

The group has bought mowers, strimmers and a range of hand tools resulting in dramatic improvements to the community garden. More volunteers have been recruited as a result of the group signing up to the Timebanking scheme. There has been lots of new interest in the site from community groups and individuals and the profile of the community allotment has been raised. Regular sessions and activities during the busy summer months and a core team of brilliant volunteers who make the day to day running of the allotment work effectively, with 100 people involved. Links have been made with sister projects (Oakfield / Gwaun y Nant School and Community Garden and Margaret Avenue Community Garden) which has enabled more people to get involved in community volunteering.

“We really enjoy getting involved in the community garden, for us it’s a massive part of our daily life. Meeting new people, being outdoors and volunteering to help others is so rewarding and earning Time Credits helps us enjoy other activities in the community we live in”

Project Outline

The site currently has 3 empty flower beds, a sensory garden, decking, 2 polytunnels, 8 raised beds, a summerhouse, a steel container, a potting shed, a water feature that requires fitting, a pond bio toilet and BBQ area. The group would like to develop the sensory garden by making the ramp accessible. As part of the Let’s Get a Good Thing Going tv programme the group looked at raising funds to get the sensory garden finished. This would involve; getting the gazebo area completed, insert the footings to make the area safe and Disability Discrimination Act (DDA) compatible, purchase of cushions, wind chimes, bendy mirrors & sensory soft chairs. The garden would need sensory and mobility equipment including portable hoists. The objective is to develop an Education Centre on site, to work with stakeholders & increase awareness especially linking in with local schools and community projects.

AT A GLANCE

Total grant: £16,800

Total project cost: £25,800

Round 2

GVS

BRING WVICC BACK INTO USE



Progress Report – awaiting start

The Strong Communities grant will provide vital match funding as part of the extensive refurbishment and upgrading of the WVICC. Supported by the Welsh Government's Rural Community Development Fund and other major funders, the project will transform the vacant community building into a hub of community activity. GVS hope to be in a position to sign the lease on the building early in 2020.

In the meantime, they are preparing to test the market for interest in taking on the nursery in the new accommodation, one of several key services that will be offered from refurbished centre.

Project Outline

To bring back into use the building called Western Vale Integrated Children's Centre (WVICC) and to enhance provision of services for children, young people, voluntary, community and enterprise organisations ensuring that the building becomes a beacon of community, digital and enterprise activity meeting the needs of Llantwit Major and the Western Vale.

AT A GLANCE

Total grant: £53,094

Total project cost:
£265,470

Round 2

INNOVATE TRUST

FOREST GARDEN AT PORKHERRY PARK



Project Outline

The Project supports adults with learning disabilities to carry out environmental conservation work alongside the ranger team at Porthkerry Park. Aside from the personal enjoyment that participants gain from taking part, the project is important for participants because it provides opportunities to take part in meaningful volunteering work that is valued by others and recognised within the community as a useful contribution. Adults with learning disabilities face a great deal of discrimination and stigma throughout their lives, and projects such as the Porthkerry Park Project go some way to fighting against negative perceptions.

Progress Report – ongoing

Participants are gaining skills that will be useful in further volunteering and employment settings and within their lives in general, such as the ability to work well with others, behave appropriately with one's peers, follow instructions, and take the initiative. The group have so far:

- Planted a wildflower meadow and marsh plants
- Repaired, cleaned and hung bat and bird boxes
- Maintained garden outside the rangers' cottage.
- Litter-picked
- Maintained public access footpaths
- Re-painted the park benches
- Cleaned the signs/railings along the entrance to park
- Removed self-seeded sycamore saplings
- Installed a fully accessible greenhouse which will be used to grow plants for the Rangers cottage garden

AT A GLANCE

Total grant: £28,059

Total project cost: £37,119

Round 1

“We all work as a team. Some people have a learning disability and some people have a mental health problem, and some people don't have anything, but it doesn't matter because we all just work together and get the job done”

[quote from a project volunteer]

LLANDOUGH COMMUNITY COUNCIL

MULTI USE GAMES AREA



Project Outline

Llandough Community Council are applying for a Multi User Games Area to create a hub for outdoor activities and the location will be a perfect fit with the King George V playing fields. The MUGA will compensate for grass pitches in poor weather as it offers an all year-round place for children and adults to participate

Progress Report – awaiting start

The project is an example of the way in which maximum benefits can be achieved through partnership funding using S106, Strong Communities grant and the Community Council's own reserves.

Despite poor weather early in the new year works have started on site and are now well underway, with expected completion by the end of March 2020.

AT A GLANCE

Total grant: £44,634

Total project cost: £90,037

Round 3

MURCHFIELD COMMUNITY CENTRE

REFURBISHMENT



Project Outline

The 1980's built outdated toilets have been renewed and refurbished and the main hall floor replaced. The centre is a multi use hall on the south side of Dinas Powys and is currently the only large hall/hireable space on this side of the village, serving more than 2000 households. Sport, exercise and cultural events for all ages are at the forefront of what the centre provides. The multitude of activities taking place here range from a Mother and Toddler Group, Taekwondo and street dance to a Wednesday afternoon club for senior citizens and a Memory Café.

Progress Report – Complete

Completed in the summer of 2018, the project has provided modern facilities which have transformed the appearance of the centre. The project is a direct result of users' surveys which overwhelmingly identified the toilets, hall floor and heating facilities as in need of attention. Running costs have been reduced through new plumbing and heating solutions which, in turn, has meant that the centre has been able to maintain modest hire fees. Press coverage of the improvements and word of mouth have ensured that demand for community space is higher than ever.

“We now have new groups regularly using the hall, such as a weekly cardiac rehabilitation class and the demand for large events has also increased. People think it looks great. We couldn't have made any of these improvements without the grant and it's made a massive difference”

AT A GLANCE

Total grant: £35,000

Total project cost: £39,222

Round 2

PENLLYN COMMUNITY COUNCIL

EARLY YEARS PLAY SPACE



Project Outline

This project is the third phase of village improvements, providing an early years play area in the Parc. Equipment will be installed on a previously laid sub base. The play areas provides a useful and highly accessible meeting place for parents and carers, who might otherwise be isolated in their homes, or dependent on personal transport for access to social opportunities for their very young children outside the village of Ystradowen.

Progress Report – Ongoing

The Community Council joined forces with the Ystradowen Community & Sports Association (YCSA) and the Vale Council to implement a series of village improvements in Ystradowen, following a successful community mapping exercise. The YCSA community mapping showed that isolation is an issue in dormitory settlements like Ystradowen which lacks focal points such as a shop, café, pub and library. As a result of wide ranging consultation, an Action Plan was produced which has gradually been implemented. Earlier elements included a new village hall annex with fibre broadband, community cinema, pétanque court and enhancements to Parc Owain. The grant will help to complete the package of village enhancements.

“Our overall project has focussed on regenerating the Parc by providing more reasons for its use by a wider range of residents. The completion of the early years play space is an important integral part of this strategy”

AT A GLANCE

Total grant: £16,945

Total project cost: £23,395

Round 5

PETERSTON CHURCH COMMUNITY HALL

HALL EXTENSION



Progress Report – ongoing

The hall is situated next to a children's play area, a new multi use games area and a football pitch with managers of each facility linking up with the hall committee to provide integrated services. The hall is extremely popular an extremely popular community hub and almost always full to capacity. Additional space is much needed to meet existing and future demands.

“This project will maximise the potential of our much loved and well-used asset ‘The Village Hall’. Investing in and enhancing facilities in the hall to meet the present and future needs of our community is a sustainable approach... which will help our community become more resilient to change”

Project Outline

The project is to provide a rear extension to Peterston village hall to provide a storage area and reconfigure space within the existing building to create a self contained small meeting room, separate from the main hall and small hall. Lighting and heating will be upgraded. The building hosts a range of activities including social groups, sport, plays, pantomimes, a community cinema and is available for wider rental. In addition to two halls, toilets and storage areas the building contains well used changing rooms. The project will

AT A GLANCE

Total grant: £15,000

Total project cost: £40,154

Round 5

RESTORATIVE WALES

CO-DEVELOP A SCHOOL
AND FAMILY FOCUSED
RESTORATIVE MULTI-
AGENCY PARTNERSHIP
HUB MODEL



Progress Report – Complete

The team have built strong positive relationships with local schools' staff. They meet and engage with families via regular school events and attend Vale wide family fun events. A multi-agency Building Bridges Steering Group of local family & housing agency leads; parents, key local school and nursery staff & from the GVS team serving Barry has been set up. Full restorative approaches training has been delivered to:

- a Flying Start Dad's Group (pictured above)
- schools' staff and parents
- children in Colcot to become peer mediators
- multi-agency staff training and FACT team training.

“What is special & unique about Building Bridges is that community members are a vital part of every decision & have shaped the content of the training, are members of the Steering group, & are consulted about every aspect of the project along the way. The grant has enabled us to release staff to equip parents & children with skills & knowledge to understand better their own needs & other people's points of view. The funding has paid for our usual model of restorative training to be developed so that it is helpful, relevant and accessible to all in Barry, both community members and staff”.

Project Outline

Oakfield Primary School in Gibbonsdown is very community focussed and has already begun its journey to becoming a restorative school as a whole school approach to building, maintaining and repairing relationships with pupils and staff. There is a strong sense of community and strengths, with some excellent community based programmes and services, and an appetite for participation and positive change to improve wellbeing.

The group would like to co-develop a school and family focussed restorative multi-agency partnership hub model for the Vale. They will enable and co-ordinate effective multi-agency restorative collaborative delivery with the school/s as a hub, and trained community members as a pivotal asset base.

AT A GLANCE

Total grant: £22,879

Total project cost: £45,770

Round 1

RHOOSE COMMUNITY CINEMA

COMMUNITY CINEMA EQUIPMENT PURCHASE



Project Outline

The club has been able to purchase their own cinema equipment. The community cinema, based in Stewart Road community hall, had been limited for some time by using borrowed equipment. This project allowed the group to buy their own kit making a huge difference as they can now plan their programme with certainty and avoid time consuming and costly transportation of equipment

Progress Report – complete

The hall now holds a screening every month on a Saturday night and regularly sees between 50 to 100 attending, with a core group of followers. Costs are kept low for cinema goers with an additional income stream from refreshments served by volunteers in the interval. Positive feedback is regularly received on the group's facebook page by people who comment on the fantastic resource and the chance the cinema offers to meet up with old friends. The cinema group has been able to support other local groups, such as the PTA of the primary school, to fundraise by making the equipment available to them and contributing to their screening costs. The project has benefited from Section 106 funding, releasing funds back into the Strong Communities Grant Fund.

“We can use the equipment to engage with a wider range of local people. We currently have plans to provide dementia friendly screenings. The project has wider benefits for the village hall too since having the equipment means more and different users are attracted to the hall”.

AT A GLANCE

Total grant: £10,974

Total project cost: £10,974

Round 1

ROMILLY BOWLS CLUB

CLUBHOUSE RENOVATIONS



Project Outline

The club has been able to purchase their own cinema equipment. The community cinema, based in Stewart Road community hall, had been limited for some time by using borrowed equipment. This project allowed the group to buy their own kit making a huge difference as they can now plan their programme with certainty and avoid time consuming and costly transportation of equipment

Progress Report – complete

The grant will provide replacement windows and doors, multipurpose flooring, installation of central heating, ceiling repairs and plastering as well as energy efficient lighting. This will enable the club to hire out their facilities to generate an income. In addition to the Bowls, the group have aspirations for the club to become a year-round community hub, offering a host of activities and events. There are early signs of high demand for use of the space with 2 whist (card) clubs, 3 yoga instructors offering classes as well as baby massage and weekly sessions with Vale Plus clients.

update 2022: "I can confirm that the project has been completed and the club members are really pleased with the outcome. I would like to take this opportunity again to thank the Vale of Glamorgan Council and the Stronger Communities team in particular for your help. It has certainly helped to attract and sustain community involvement at the venue."

AT A GLANCE

Total grant: £24,485

Total project cost: £24,485

Round 5

THE INTERSENSORY CLUB



VALE ADAPTIVE CYCLING CLUB

Project Outline

The club have identified a need for a website and three more specialist cycles to meet the needs of their increasing number of beneficiaries along with their carers. The cycles they have identified as needing are; Electric Duet Wheelchair Tandem Cycle, Electric Side X Side Tandem Cycle and Tomcat Special Needs Bullet Trike.

Progress Report – complete

The club have successfully purchased an Electric Duet Wheelchair Tandem Cycle, Electric Side X Side Tandem Cycle, Tomcat Bullet Trike and website. These purchases have enabled the club to expand their provision of cycling opportunities for their beneficiaries as well as helping to promote the activities they offer. This has had a hugely positive effect on participation. The club has already experienced a huge increase in the number of disabled people and their carers/family accessing cycling activities in the Vale. The new equipment and website will also help to secure the club's sustainability in the longer term by attracting new members and funding donations which will increase participation and in turn increase the quality of activities on offer.

“We have attracted over 50 new beneficiaries this season, varying from young people to older people in care provisions- some of whom have not cycled for over 20 years. They and their carers have experienced huge benefits including more social interaction as well as improved health and wellbeing. Some said it was the most enjoyable afternoon they'd had for years.”

AT A GLANCE

Total grant: £17,520

Total project cost: £17,520

Round 4

WENVOE COMMUNITY COUNCIL

COMMUNITY LIBRARY AND HUB



Progress Report – ongoing

The community library currently operates in a 50-year-old unsustainable and uneconomical building, constructed originally as a temporary classroom. The purpose of this project is to create a new Wenvoe Library and Community hub for groups and businesses in the locality. To survive, the library must generate an income and a new facility which can accommodate a broader range of users will help to achieve this.

Update 2022: A Strong Communities grant to Wenvoe Community Council, together with Section 106 funds, has been used to replace the 60-year old Wenvoe library with a modern building, which was handed over to the Community Library in October 2021. The extra space has enabled the Library to provide additional activities via a grant from the Welsh Government for an IT suite, which is now operational, and a coffee area. We have already added 6 new volunteers to our ranks and a number of activities have been organised to include the older residents in Wenvoe as well as the younger members.

Project Outline

Initial proposals to integrate the new library with the existing community centre proved beyond the budget available. The final solution will provide a new stand alone library building with the potential for linking to the community centre at a future date. The grant will provide a financial contribution towards capital works to transform community facilities in Wenvoe. The new library will provide modern flexible space suitable for a broad range learning and social activities. The project developed as a response to community mapping work which highlighted local priorities. The

AT A GLANCE

Total grant: £40,000

Total project cost: £230,000

Round 5

YMCA



REPLACE BOILERS AT THE YMCA

Project Outline

The YMCA need to replace their boilers – the centre is dependent on the efficiency of the boilers to provide heat and hot water for the members, partners and public. The boilers have been maintained and repaired well since their installation, but their heating engineers have advised 3 of the 6 boilers are now unrepairable and the 3 currently working are not going to last much longer. Many of their service users are suffering multiple learning and physical disabilities and depend on their day care at the YMCA, without heat and hot water this service would have to cease.

Progress Report – complete

An average week at YMCA Barry will see a foot fall over 2,500 through its doors accessing the vast range of services on offer. Investment in basic services such as heating and hot water has ensured the organisation can be confident in their ability to continue to provide activities and services to the people of Barry. These include specialist education, social involvement, volunteering and support, gymnastics, digital media, community radio broadcasting, film for young carers, community café, community dance, Major Music, day care services and in addition provide office and physiotherapy/occupational health suites for other charities.

AT A GLANCE

Total grant: £27,443

Total project cost: £27,443

Round 2

ALL SAINTS CHURCH SOUTHERNDOWN

COMMUNITY GARDEN



Project Outline

The grant has been used to develop an accessible, low maintenance garden for anyone using the hall to enjoy. The building is the only meeting place for organisations and residents in the area, and since being adapted for community use in 2008, is regularly used as a meeting place for both. The project has transformed an overgrown and unmanageable piece of surplus land into attractive useable outdoor space.

Progress Report – complete

The project completed within budget in June 2018 and the group reported that the garden was being used daily in the summer. The investment has enabled them to do much more and made the premises far more attractive to potential users. As the outdoor space is now wheelchair accessible all members of the community can use the space. An added bonus is a view of the regular cricket matches taking place at the neighbouring Southerndown cricket club.

“We are really pleased with the new facility, as are the members of the church and community. It is in the heart of the village and has a lovely feel to it. It’s wheelchair accessible throughout and has been adapted with this in mind. Even the stones are wheelchair friendly. The community can also enjoy cricket from the garden as it looks straight out onto the pitch. We are delighted!”

AT A GLANCE

Total grant: £2,495

Total project cost: £3,495

Round 1

BARRY ATHLETIC FOOTBALL CLUB

NEW FLOORING FOR MAIN PAVILION



Progress Report – complete

Flooring works have now been completed, providing safe and attractive function space for all users.

“The Club have been tireless and successful in securing funding for a new roof, heating, kitchen and toilet facilities. The SCG fund will be used for the replacement floor which will complete the programme of works we consider needed to attract new week day and evening users and retain existing users. Extensive consultation took place over a 2-year period and the programme of works is in response to the outcome of the consultation.”

Project Outline

The project aims to help ongoing regeneration works in Barry by refurbishing a sports and leisure facility on freehold land owned by the Barry Athletic Club. The club consists of football, cricket, bowls, tennis, brass band, running and war veterans’ groups.

This application is concerning the main pavilion predominantly used on weekends by the football section in the winter and the cricket section in the summer. Funding is needed for new safety flooring in the entrance hallway, main hall, bar, cellar, boiler room and kitchen area. The poor condition of the current flooring is a health and safety concern.

AT A GLANCE

Total grant: £4,896

Total project cost: £4,896

Round 4

CADOXTON CONSERVATION GROUP

WEBSITE AND GARDENING EQUIPMENT



Project Outline

The group are in urgent need of a professional website to create awareness of their group. They also need equipment to maintain and improve Little Hill Green.

Progress Report – complete

Having a website has meant people with an interest in conservation are able to find the group – anytime, anywhere. It gives the power to reach possible donors with much more accuracy and reliability. The grant has provided basic tools which means the group can tackle the shrubbery that needs cutting back & the wild flower beds that constantly need maintenance.

“With the support of the Vale of Glamorgan Council, the National Lottery and an enthusiastic group of volunteers we have been able to restore the green spaces within our area, making them available for community use. As a matter of interest ...one of our litter pickers, 6-year-old Harrison Baker won the Bro Radio Young person of the Year award at their recent ceremony”.

AT A GLANCE

Total grant: £1,554

Total project cost: £1,554

Round 3

CASTLELAND COMMUNITY CENTRE

FLEXIBLE BOOKING SYSTEM/ HARDWARE



Progress Report – complete

The busy centre accommodates clubs which provide vital services to this area of Barry. The training can help community members get access to jobs and the social groups improve quality of life and inclusiveness in an area where such activities are not necessarily accessible and affordable. The centre has spent time integrating the new software in their website and booking system and staff have been familiarising themselves with the software too.

“The software will be invaluable in freeing up time to concentrate on more community – based projects and spending time networking and helping other groups or potential groups in the Centre”.

Project Outline

A highly flexible reservation booking system and procure the hardware needed to support the growing demands on the Centre from a variety of individuals and organisations, plus a volunteer training programme. There are now 16 regular groups every week compared to 12 in 2017. The centre provides facilities for a variety of user groups such as toddlers groups, IT training, employability training, counselling services and disability organisations as well as individual fitness groups and recreational groups.

AT A GLANCE

Total grant: £3,522

Total project cost: £3,896

Round 2

DINAS POWYS SCOUT GROUP



Progress Report – ongoing

The construction of the extension to the Scouts Hall commenced on time and is due for completion early in 2020. The full potential is yet to be realised, as once the building work is complete it will be a lot more visible. Currently the group support not for profit organisations within the community which include Scouts, Scout cubs and Beavers packs. 20 attend Girl Guiding, 70 the Local Bridge club, 15 the Baby and toddler group, 20 the Yoga classes and there are additional community meetings held.

“We have already had interest from commercial organisations to host meetings and training because they are aware of the work to enhance the available facilities. Once complete we will actively promote to encourage other user groups with the goal of making our group self-sustaining for the future.”

EXTENSION TO SCOUT HALL

Project Outline

An extension added in 1975 is a precast, high energy loss structure built as a short-term solution to a lack of storage. This storage area leaks, it needs to be demolished and rebuilt with much needed storage areas & a separate smaller meeting area to accommodate all current & new users. Planning permission was received along with a grant from the RCDF in November 2018. Since then, with additional funds raised and grants from other sources the kitchen area has been upgraded and works started on the new disabled toilet & ramp. Additional funding is now needed for the extension to cover the shortfall of the grant and to equip the new extension with the facilities needed.

AT A GLANCE

Total grant: £10,000

Total project cost:
£135,505

Round 4

HOME EDUCATION BARRY



Progress Report – ongoing

HEB (Home Education Barry) is a place for home educating families to meet, learn, play socialise and gain help and support. HEB is run by volunteers and parents that home educate children between the ages of 0 - 18 years old. Families come mainly from Barry and the surrounding areas of the vale of Glamorgan.

“With home education becoming a popular choice for families it is very important for the community to have a safe and trusted place to meet. It’s important to be able to work together as a community to help all members no matter what their reasons for choosing to home educate.”

SUPPORT FOR HOME EDUCATORS

Project Outline

The grant will help the group by providing toys and educational resources such as arts, crafts and books and to buy a laptop/tablet and be able to offer special sessions from providers outside of HEB. A monthly membership fee will ensure a reliable income source and cover the cost of hall rental and replacement of resources over time.

AT A GLANCE

Total grant: £1,440

Total project cost: £2,820

Round 5

LLANSANNOR VILLAGE HALL

LIGHTING AND AUDIO-VISUAL EQUIPMENT



Progress Report – complete

Replacing the 'industrial' and uneconomic single zone fluorescent lighting system in the hall with modern efficient lighting has meant the hall can provide an atmosphere suitable for a range of social and business events. Combined with new audio facilities the improvements mean that existing users and potentially vital new social and commercial users, can benefit from a quality AV and sound system in the hall for presentations, music and drama, concerts and to use at social functions and social sporting events such as skittles nights, whist, etc. The grant has made a significant difference to the income generation capacity of the hall, securing its future viability

Project Outline

The hall provides the only community meeting place for the residents of this small rural Vale community to gather for social sporting and cultural events. It is self-funded and relies totally on the income it generates from hire charges and community fund raising events. The group would like to improve the lighting/audio visual facilities and energy efficiency in the hall to ensure it remains an attractive and viable community facility with a sustainable future.

AT A GLANCE

Total grant: £7,131

Total project cost: £9,430

Round 3

LLANTWIT MAJOR TENNIS CLUB



Progress Report – complete

The club has successfully purchased and installed new and upgraded gates and fencing around the four tennis courts. These courts are now fully secure with all trip hazards and loose fencing removed. The new fencing also works to prevent the access of unauthorised persons, thus ensuring the area provides a safe and secure environment for members and the general public. The club has been able to widen their membership and meet their aim of providing an all-inclusive leisure offer through welcoming children and disabled groups with safe access to the courts. Vale Plus are now regular attendees for the fortnightly sessions at the courts. The new fencing has transformed the aesthetic appeal of the courts, making them look more professional and tidier, which has resulted in increased membership.

“The installation of the fence will hopefully continue to attract new members. Now the fencing is complete the Tennis Club can start fundraising for their next project which is to put floodlights on all the courts thus making all the courts available throughout the day and night. The completion of the fencing allows for future projects to be progressed.”

FENCING, GATES AND POSTS

Project Outline

The courts have recently been resurfaced following a successful application to RCDF to redevelop the Sport facilities on the Recreation Ground. However, a consequence of this is the current fencing cannot be secured to the new surface causing a number of issues.

Replacement fencing, posts and gates around three sides of the Tennis Courts would resolve these issues whilst also ensuring a safe environment for tennis members and the general public to play in as well as providing a secure site to prevent damage and vandalism to the newly resurfaced tennis courts.

AT A GLANCE

Total grant: £4,687.50

Total project cost: £6,250

Round 4

LOWER PENARTH COMMUNITY HALL



Progress Report – ongoing

The original heating system serving the Community Hall is inefficient, outdated and no longer fit for purpose. With 200 people a week using the Centre the realistic fear, without investment, would be that user groups cancel room hire, leading to an unsustainable Community Centre. Current regular activities and groups include: Parent and Toddlers; Rainbow and Brownies; Circuit Training; Yoga; Coffee Club; Private Dance Practice “Strictly Come Dancing Style”; Pilates and more recently Dog Training Classes.

Presently, a wide age range of people benefit from a fantastic venue close to where they live. Finding alternative premises close to home would prove challenging for many of the current users. For the centre, losing local user groups would cause a catastrophic loss of income and in what is a sustainable model. The many volunteers based at the centre could also be lost to the local community.

“The Centre has hirers who visited it as a child attending cubs & scouts or rainbows & brownies, or parties, and who now either send their children to one of those groups, or who hire it for family events, or who have set up their own groups. Our aim, with this project, is to ensure that the Centre will not just be there, but be there in a good state for their grand-children to visit and use.”

IMPROVED HEATING SYSTEM

Project Outline

The grant will provide a programmable radio frequency thermostat and new radiators both of which would lead to a safer, more efficient heating system and major cost savings. The Hall committee has already bought a defibrillator and the grant will also help towards the cost of a lockable housing unit for this.

AT A GLANCE

Total grant: £3,891.51

Total project cost:
£3,891.51

Round 5

MOTION CONTROL



MEANINGFUL MOTION PILOT PROJECT

Project Outline

Motion Control Dance would like to pilot a new project called 'Meaningful Motion' for those living in the Vale with mental and physical difficulties such as Alzheimer's, Dementia, Parkinson's, cancer, arthritis, etc. Through energising, inspiring and fun sessions, dance can improve memory, physically and mentally, emotions, mood, help with balance, age related decline and generally improve peoples' lives.

Progress Report - complete

To date, the Meaningful Movement project has achieved the following positive outcomes:

- A new movement based programme developed for adults and the older generation in the region
- 2 care homes booked in fortnightly after pilot project to continue sessions
- 10 stakeholders engaged in the pilot project (care homes, local agencies)
- delivered taster sessions at different Ageing Well groups in Penarth and Bonvilston in creative movement and Tai Chi
- 54 sessions delivered across 6 care homes over the course of the pilot project!
- 97 individuals participated in dance pilot project so far!
- 85% of participants show a positive response in engagement with tutor, staff and other residents. 75% of the participants demonstrated slight improvements in mobility over the pilot project. 90% of the participants report that they feel happier and healthier as a result of our dance sessions. 2 part time members employed on a freelance basis

AT A GLANCE

Total grant: £4,799

Total project cost: £4,799

Round 3

NELLS POINT COASTWATCH CENTRE

HEATING IMPROVEMENTS



Project Outline

The project will provide modern energy efficient heaters which will significantly reduce running costs and by extension the carbon footprint, making the station more self sustainable. In addition, it will maintain the comfort of both watchkeepers and visitors, increasing the effectiveness of the watchkeepers and enhancing the visitor experience. Visitor numbers are around 250 per annum, a mix of community groups and walk in visitors.

Promoting a positive message and passing safety of life at sea information to the wider community is an important aspect of the organisation's work. A more comfortable environment will allow visitor numbers to grow, especially in the cooler months, thereby raising awareness of this important service more widely and encouraging increased donations.

Progress Report – ongoing

The National Coastwatch Institution undertake a visual lookout along the coast and adjacent coastline for any people in difficulty and raise the alarm to the Coastguard who organise rescue efforts. The station at Nell's Point, Barry opened in 2007 and has 50 volunteer watchkeepers who keep watch in daylight hours every day of the year. Over the 3 years up to 2020 the group has been directly involved in the rescue of 71 people and has assisted in many more.

“Being closely associated with the sea and the environment, we are well aware of the global environment and our aim is to contribute to a low carbon society by using our limited resources efficiently.”

AT A GLANCE

Total grant: £1,931.98

Total project cost:
£2,231.98

Round 5

OGMORE BY SEA VILLAGE HALL

VILLAGE HALL KITCHEN

Project Outline

The group would like to add a kitchen and all the fittings to the Village Hall they are building. Strong Communities Grant is sought towards the provision of a kitchen, a vital component in enabling the hall to provide catering services and generate an income.

The long-awaited village hall for Ogmores by Sea will be located on the site of redundant toilets. The new building will provide much needed services for the local community- with the added bonus of spectacular views across the Bristol Channel.

AT A GLANCE

Total grant: £6,000

Total project cost:
£584,000

Round 3



Progress Report – ongoing

The project is the culmination of the community's efforts over several years. Funding from The Welsh Government Rural Community Development Fund (RCDF), Section 106 and the Vale Council's Strong Communities Fund, together with local fundraising will culminate in a new community hub for Ogmores by Sea. Works on site commenced early in January 2020 and are now well underway.

PUKKA PRODUCTIONS



Progress Report – completed

The group run a Theatre School for Children aged 3 to 16, putting on theatrical productions in venues across the Vale to fundraise for charities and families in need. The grant has meant the organization could afford to build a professional looking and up to date web site and online presence, helping them to expand and reach a wider range of people. Raising awareness helps to encourage more community participation in theatre, drama and music and create more opportunities for paid employment, training and voluntary options

“Since the website project and marketing campaigns we have an additional 6 children in the theatre school which generates an extra monthly income.... which has enabled us to employ another member of staff. A combination of email drops, website promotion and social media targeting had a combined effect and definitely had an effect on Pukka’s visibility and reach”

DESIGN AND BUILD NEW WEBSITE

Project Outline

The group would like to completely redesign and rebuild a new website that will reflect all the groups and services that PUKKA provides. A new laptop, vehicle graphics, marketing campaign and training will complete the package needed to increase the group’s visibility in the community.

AT A GLANCE

Total grant: £3,600

Total project cost: £4,900

Round 2

RHOOSE COMMUNITY HALL

REPLACEMENT WINDOWS



Project Outline

Replacement of windows in the lesser hall, office and committee room. The windows needed replacing due to their age, inefficiency and the fact that they presented a security issue. The new windows are not only aesthetically pleasing, they should help to reduce fuel bills and make the building more attractive to users.

AT A GLANCE

Total grant: £5,250

Total project cost: £5,250

Round 2

Progress Report - completed

13 new windows in the community hall were installed successfully at the end of July 2018. The group are delighted with their new asset. The new windows have a dead bolt locking system as well as a ten-year guarantee and will improve the hall's security. They will also improve conditions at the hall which will in turn encourage more people to attend activities such as exercise sessions. These sessions are vital in contributing towards the hall's income stream in the future.

SARON VESTRY

RENOVATION OF VESTRY



Project Outline

The project is to renovate the vestry at Saron Chapel and create a new community asset for the village of Treoes.

The building would be used to present the history of the village and to provide a meeting place for community groups, training for residents, opportunities for volunteering and an income stream through hiring the meeting room.

Progress Report – complete

An example of a partnership project with Welsh Government Rural Development Funding and Heritage Lottery funding providing a package of support towards restoration of the Vestry. Works are now largely completed.

A great deal of community engagement has been carried out by the local history group, working with residents and the local school, which will build the foundation for ongoing community commitment to the project.

AT A GLANCE

Total grant: £3,267

Total project cost:
£160,000

Round 1

ST BRIDES CHURCH HALL COMMITTEE



Progress Report – complete

The Church Hall loft has been fully converted into an easily-accessible archive store room with additional storage space for seasonal equipment such as Christmas trees, decorations etc. As the loft is a lockable store the space gives security for the records of the parish and various bodies using the hall. The extra storage space created enables better use of the remaining available space.

“As many of the volunteers running and helping the various activities in the hall are elderly, safe access and egress to the loft space has been a great concern. The stairs fit in so well that many regular users of the hall haven’t even noticed that they are there. A beautiful job! The hall serves a wide cross-section of the community. It is difficult to put an exact figure on the number of people that use the hall, but it runs into several hundred as the Library alone has over a hundred signed-up users. The Hall is very heavily used but looking to the future there are a few time slots available during the week and we have an enquiry re a sewing class for sewing machine users. We really are very grateful for the grant”

STAIRCASE TO LOFT AND ASSOCIATED WORKS

Project Outline

To install a staircase to the loft and all associated works to make the loft storage space accessible to all. There is also a requirement for the lighting to be modified in the entrance hall.

AT A GLANCE

Total grant: £7,975.60

Total project cost: £8,976

Round 4

SULLY COMMUNITY CINEMA

CINEMA RELATED EQUIPMENT



Project Outline

To purchase two quality blu-ray/dvd players to allow locally produced material relating to community events to be shown before a seamless transition to the main film. Ancillary equipment such as a switching device and monitoring facility have also been provided with a Free-view TV box to allow the viewing of events of community interest such as the royal wedding.

AT A GLANCE

Total grant: £1,857

Total project cost: £1,857

Round 2

Progress Report – completed

The rack mountable equipment has been installed and was used for its first public performance on the 20th May. The group now look forward to expanding the range and frequency of films to be shown to the local community as well as using the equipment to showcase significant events such as the Autumn international rugby matches.

“All the cinema equipment is now bedded in and is providing the quality experience we had been hoping for”

THE EXCHANGE

DESIGN, FEASIBILITY AND CONSULTATION



Project Outline

The Exchange is a regeneration project seeking to provide a new 'market hall' for Cowbridge town centre, to accommodate a weekly produce market, arts and crafts fairs, events, and potential site for food festival. The grant is sought towards the cost of design fees and a series of consultation activities.

Progress Report – completed

Support for design fees was needed since the project location moved to a new site on the eastern side of the Butts (above). The grant covered the cost of redesign of layout, access, footprint, and servicing and supported additional more detailed consultation needed to clarify the following:

- The practical needs of potential hirers (Farmers Market, Food and Drink Festival, Other Produce and Craft Events, Community Event Organisers, Community User Groups) in terms of layout, access, services etc
- The demand /opportunities for partnership working with public & voluntary sector providers within the community café & other training, employment and volunteering aspects of the project

AT A GLANCE

Total grant: £10,000

Total project cost: £10,000

Round 2

“The consultations with community and business stakeholders in particular gave us renewed confidence to take the project forward, and to amend designs in line with the feedback received. That phase can therefore be seen as an important preliminary step to ensuring the final Exchange project is entirely user-friendly, practical, sustainable, based on clear need and evidence, and supported by the community”

THE MEMORY JAR, COWBRIDGE

INTERACTIVE PROJECTOR



Project Outline

The grant is providing funds to purchase an exciting new interactive projector. This will provide a whole range of new sensory experiences to encourage social engagement, physical activity and emotional stimulation, enhancing the quality of life for all who use it.

Progress Report – complete

The Memory Jar is a fortnightly meeting place for people living with dementia. In a caring and supportive atmosphere, the group share memories, make friends – and have fun. Since it opened, the Memory Jar has seen its numbers increase constantly, and it has helped to change the nature of provision for dementia care in Cowbridge and the surrounding area.

“This state of the art projector, the design for which won a National Dementia Care Award in 2018, is proving to be an invaluable resource for care homes, memory cafés and clubs across the UK.”

AT A GLANCE

Total grant: £2,000

Total project cost: £7,896

Round 5

TREOES COMMUNITY HALL

REFURBISHMENT OF HALL



Project Outline

The hall was totally refurbished - painted inside, new entry carpet, new fire doors, replacement vertical window blinds, some new tables and total replacement of all chairs, additional kitchen equipment e.g. large urn, cafetieres, cups and saucers etc.

Progress Report – completed

The much-needed renovation and refurbishment instantly changed the look and feel of the Hall, now more modern, more inviting. Groups who had been regularly using but might have been thinking to find another venue have remained and fed back how pleased they were with the upgrading. Within one week of renovation work a musicians group asked to book the Hall for 3 hours each Saturday and an Art Group who only used the hall once a week requested two more mornings. The impact of these additional bookings is that the Hall is now being used daytime Tuesday through to Saturdays, also Tuesday and Wednesday evenings and importantly is now able to fully sustain itself with the rental income now generated. The Hall now looks good and far more attractive both inside and out.

“Feedback from older members of the community, especially the Young at Heart Group, was their absolute delight at having at last comfortable modern theatre style chairs to sit on rather than the old plastic bucket ones!!”

AT A GLANCE

Total grant: £5,839

Total project cost:
£6,647

Round 1

TY CADOC RESIDENTS ASSOCIATION



Progress Report – completed

All the community garden-based projects undertaken by the association are based upon bringing the community together and socialisation as well as teaching and encouraging care for the environment and wildlife. The group recently heard that they were successful in bids for grants to the Mayor's Foundation and other external funding, meaning The Strong Communities Grant may be returned to the fund.

“Through conversations many people have mentioned how they would love to have plants however do not know how to grow or maintain them. Through this project we can teach them new skills of how to garden. The younger residents also benefit from the gardens as it will teach them about how to care for the environment. Families can also go on to enjoy the activity of gardening together and watch their creations grow. Our project will add value to our existing activities through continuing our theme of togetherness and environment and wildlife care and teachings”.

COMMUNITY GARDENS

Project Outline

The group would like to renew the old worn wooden surrounds to the garden. They would also like to add new soil and plants that will attract wildlife and insects to help enhance biodiversity. Volunteers within the community will maintain the gardens. Once the gardens are completed, they plan to do further projects with the community such as insect hotels and building bird boxes.

AT A GLANCE

Total grant: £949

Total project cost: £2,199

Round 3

VALE PARENT/CHILD HOMEWORK CLUB

SUPPORT/VOLUNTEER
TRAINING FOR
HOMEWORK CLUB



Progress Report - completed

The FEED project is an example of how individuals have the capacity to effect ground breaking and dramatic change for good in their communities. Project leader, Catherine Watkins, MBE, sadly passed away during delivery of this project. However, building on the success of the FEED project in Rhoose that supports both children and adults in education and development, the groundwork has now also been laid to allow this innovative community learning model to continue.

With support from Strong Communities Grant funding, network meetings and extensive community engagement took place in both St Athan and Llantwit Major which identified widespread interest from potential participants and volunteers in both communities. Targets were achieved in line with commitments in the application.

Project Outline

The FEED project will enhance the local communities of St. Athan and Llantwit Major creating community cohesion; it is based on a national award winning programme that has been proven to work through numerous quantitative studies; a structured service to offer a holistic approach to education and development programmes in play and sport for the family. The award winning programme has been established using best practices of the CSSIW for 6 years.

AT A GLANCE

Total grant: £9508.00

Total project cost:
£9508.00

Round 2

VALE PLUS



Progress Report - ongoing

Operating since 2001, ValePlus provides lifelong learning opportunities by means of accredited programmes for adults with learning disabilities. ValePlus provide space for 90 individuals (age 18-65) across four sites. They provide meaningful training for their service users to help develop confidence and independence. Activities include essential skills training, horticulture, cookery, ICT, personal and social development, art, craft and woodwork. ValePlus also provide work experience in retail through their charity shop and catering through the café, both in Barry High street.

The organisation has recently expanded their services by taking on a new venue in the Western Vale to increase the clients they can accommodate from 10 to 16 per day as well as increasing the variety of activities they offer learners.

“The focus of our project is to improve the quality of provision in Llantwit Major and the capacity to provide service to more adults with learning difficulties in the Western Vale”

LLANTWIT MAJOR OUTREACH SERVICE

Project Outline

The group would like to replace the current room divider in the hall with bi-fold doors, the current dividers are heavy and difficult to move around for many of the groups. They would also like to purchase some lightweight tables and a trolley to stores them on.

AT A GLANCE

Total grant: £9,640

Total project cost: £9,640

Round 5

WENVOE VILLAGE HALL

ACCESS IMPROVEMENTS

Project Outline

The group would like to replace the current room divider in the hall with bi-fold doors, the current dividers are heavy and difficult to move around for many of the groups. They would also like to purchase some light weight tables and a trolley to store them on.

AT A GLANCE

Total grant: £8,146

Total project cost: £8,146

Round 3



Progress Report - completed

The works have been successfully carried out and new equipment purchased. The new type of bi-folding door allows the group to explore new opportunities of marketing the hall for different types of events and hirers as it allows the current hall division in the centre to be opened up further. It allows the space to be used flexibly and divided into two easily if two user groups want to hire it simultaneously. Through word of mouth, more enquiries are now being received as the facilities are much more attractive to users. As an added bonus the redundant trestles have been recycled for use as flooring in the loft, making even more storage space available to hall users.

“The new doors have made a huge difference, particularly for some of our elderly users who are finding it a lot easier to use the hall”

COED HILLS



Progress Report - completed

“The Coed Hills and St. Hilary Community have been loving the new apple pressing equipment gained through the Stronger Communities Grant. We have trained members of the community to use the equipment & so far 5+ people know how to work the press. It is so very much more productive than older, less reliable equipment we had before. This year has seen a bumper crop of apples & so far, we have had 4 pressings with the 5th being at the Produce market event on 13th October. People from the village and local hamlets bring apples for pressing - a really lovely sharing event involving families”.

At Coed Hills the apple pressing equipment has enabled juice to be shared with the Forest School group, functions at the space & for the members of the sustainable community living here. There are plans for cider to be made this year & further events planned for coming apple seasons, including a talk and demonstration to the WI. Having the equipment has stimulated the coming together of groups who may not have previously engaged e.g. families & older members of the village who have shared their apples & left bottles for filling with juice in the community adopted telephone box.

APPLE PRESS

Project Outline

The group would like to purchase a fruit press to facilitate local fruit pressing for St Hilary and the surrounding villages and towns to assist the local community in making use of this otherwise waste fruit.

AT A GLANCE

Total grant: £600

Total project cost: £1,000

Round 3

LLYSWORNEY COMMUNITY ASSOCIATION

MAKING MUSIC IN LLYSWORNEY



Project Outline

To purchase a keyboard for communal use and in support of cultural events held in the village.

AT A GLANCE

Total grant: £239

Total project cost: £572

Round 2

Progress Report - completed

The keyboard was purchased in the summer and is bringing the community together in new ways. Llysworney has no dedicated space for communal activities so having a transportable keyboard means there are now many more opportunities for indoor and outdoor events at different venues. There is a growing interest in choral singing and music-making in the village as a social, well-being and fund-raising activity. The keyboard will allow that interest to grow and broaden while encouraging a wider range of residents as audience and participants.

“The keyboard has made it so much easier to sing together at annual events like our ‘Songs of praise’ and ‘Carols around the pond’”

MARGARET ALEXANDER CENTRE

SCREEN PROJECTOR AND AUDIO EQUIPMENT

Project Outline

The project is to buy equipment for use by a diverse range of groups who regularly meet at the centre. The request is for a screen projector and audio equipment. There would be the potential to increase the centre's income by providing equipment for which there is a clear need, and which will serve existing groups and attract new users.



Progress Report – completed

The impressive new sound system and big screen have been successfully installed, and the purchase of the projector by the end of September completed the project. There are 6 regular groups averaging 20 attendees that are all benefiting directly from the new sound system, and user groups now do not have to bring their heavy sound systems with them each week. Many members of each of the groups have been hugely impressed including many of the older user groups. For example, for the 86-year-old couple who run the strictly dance group, the weekly sessions are their only time for social interactions and so the better the hall conditions, the better for them, which raises the bar for all groups.

“Due to this new equipment we have two new groups, one is a youth group, that will be looking forward to using our big screen for sessions as well as our regular group ‘music in mind’. On a personal note, it’s been very rewarding to see the immediate impact of the project on the community. Many thanks .. our hall and it’s benefitting groups are greatly appreciative”

AT A GLANCE

Total grant: £993

Total project cost: £993

Round 4

RAINBOW WOMEN'S GROUP

RAINBOW MINI 'GEM'



Project Outline

Provide exercise equipment and instructor to make it easier for the group to arrange their own activities at low cost. The project aims to address barriers facing many ethnic minority women who struggle to access opportunities for health and fitness and face wider problems of isolation. Links between health and ethnicity have long been established which show a great need for this type of project.

Progress Report – completed

Running weekly exercise sessions at the Margaret Alexander community centre for a minimal £2 charge, the Rainbow Women's Group plan to help women of all ages live a more active and healthy life. The project builds on the group's aims to help combat isolation among for vulnerable and excluded women. The project helps to improve communication, understanding, respect and interdependence between people from different age groups, genders and cultural backgrounds.

“It helps the ladies who arrived new to the Vale to mix in society, joining the classes and sharing all the laughs helps them to change their mood and to feel better”

AT A GLANCE

Total grant: £1,000

Total project cost: £2,456

Round 1

THE GATHERING PLACE

LUNCH CLUB



Progress Report – completed

The club met for the first time in May 2018 and meets on the second Monday of each month. Though there is no age restriction, it is designed to offer older residents of the village and others living further afield the chance to enjoy a meal in a social setting. Residents who attended the first lunch were very impressed. A core of volunteers are confident to take over running the club in the new year and there are plans afoot to run more activities alongside the lunch club such as a quiz or craft sessions.

“We have 15 to 20 regular attendees and the numbers are growing. Some of these now take part in other activities such as ‘music in mind’. We take the opportunity to invite representatives from other organisations to the lunch club so that people can hear about a wide range of services available to them”

Project Outline

To provide a Lunch Club for older people who live in or around the St Athan area. The grant has been used to buy crockery and cutlery and to fund a co-ordinator for 5 hours per month for the first year of the project.

The community centre provides the building, heat, light and facilities free of charge. The club is supported by local volunteers under the management of the co-ordinator. The cost of the food is not subsidised and the lunch club plans to be self-funding by year two.

AT A GLANCE

Total grant: £891.00

Total project cost: £891

Round 2

**Working together,
we can achieve the
Council's vision for
the Vale of Glamorgan of
'Strong Communities with
a bright future'**

