

Meeting of:	Healthy Living and Social Care Scrutiny Committee
Date of Meeting:	Tuesday, 10 January 2023
Relevant Scrutiny Committee:	Healthy Living and Social Care
Report Title:	Update on the Cardiff and Vale of Glamorgan Regional Partnership Board
Purpose of Report:	To update Members on the work of the Cardiff and Vale of Glamorgan Regional Partnership Board in relation to the integration of health and social care
Report Owner:	Lance Carver, Director of Social Services
Responsible Officer:	Cath Doman, Director of Health and Social Care Integration
Elected Member and Officer Consultation:	Cabinet Member, Social Care and Health. Social Services Management Team.
Policy Framework:	This report is consistent with the Policy Framework and Budget
<p>Executive Summary:</p> <ul style="list-style-type: none"> • This report provides Members with a briefing on the work of the Cardiff and Vale of Glamorgan Regional Partnership Board (RPB). • The report summarises the progress of the RPB made since the last report in January 2022, recognising the ongoing and pervasive impact of COVID-19 on services across the partnership and the associated effect on the progress of more strategic developments. • Full details of the activities and impact of the RPB can be found in the 2021/22 RPB annual report, the link to which is provided later in this document. 	

Recommendations

1. To consider the work being undertaken by the Cardiff and Vale of Glamorgan Regional Partnership Board, and progress made, including, in particular, the outcomes being achieved for local people.
2. To receive further annual updates on the work of the Board.

Reasons for Recommendations

1. To increase awareness of the work of the Cardiff and Vale of Glamorgan Regional Partnership Board and to ensure links to the wider Vale of Glamorgan Local Authority agenda and key priorities are considered and ensured.
2. To keep Members apprised on and engaged with the work of the Regional Partnership Board.

1. Background

- 1.1 Part 9 of the Social Services and Well-being (Wales) Act 2014 requires Local Authorities to make arrangements to promote co-operation with their relevant partners and others, in relation to adults with needs for care and support, carers and children.
- 1.2 Part 9 of the Act provides for partnership arrangements between Local Authorities and Health Boards for the discharge of their functions. It also provides Welsh Ministers with regulatory powers in relation to formal partnership arrangements (including pooled funds) and partnership boards.
- 1.3 Local Authorities and Health Boards are required to establish Regional Partnership Boards (RPBs) to secure strategic planning and partnership working them and to ensure effective services, care and support are in place to best meet the needs of their respective populations. The Cardiff and Vale of Glamorgan RPB was established in April 2016.
- 1.4 The objectives of the RPBs are to ensure that the partnership bodies work effectively together to:
 - Respond to the population needs assessment carried out in accordance with Section 14 of the Act;
 - Implement the plans for each of the Local Authority areas which are covered by the Board, which Local Authorities and Health Boards are each required to prepare and publish under Section 14 of the Act;
 - Ensure the partnership bodies provide sufficient resources for the Partnership Arrangements;
 - Promote the establishment of pooled funds where appropriate.
- 1.5 RPBs have widened their remit to prioritise the integration of services in relation to a much broader range of people:

- Older people with complex needs and long-term conditions, including dementia
 - People with learning disabilities
 - Children with complex needs
 - Carers, including young carers
 - Integrated Family Support Services
 - Children with disabilities and/or illness
 - Children who are care experienced
 - Children who need care and support
 - Children who are at risk of becoming looked after
 - Children with emotional and behavioural needs
 - Young People as they transition between Children and Adult Services
- 1.6** The Chair of the RPB has changed during this year, transferring from the former Councillor, Ben Gray, to Councillor Eddie Williams, Cabinet Member for Social Care and Health, Vale of Glamorgan Council.
- 1.7** This Report provides an update following the last report to the Scrutiny Committee on the 11th January 2022.

2. Key Issues for Consideration

- 2.1** The Partnership Arrangements (Wales) Regulations 2015 require that each Regional Partnership Board must prepare an annual report on the extent to which it has met its objectives. The 2021/22 Annual Report of the RPB is available on the Partnership's website [here](#).
- 2.2** The report summarises the activities and impact of the work of the RPB, therefore its contents are not repeated in this report but attention is drawn to the impact of the work of the RPB on for citizens of the Vale of Glamorgan.

The continuing impact of COVID19 and the cost of living crisis

- 2.3** Health and social care services continue to experience the ongoing impact of COVID19 and the cost of living crisis and services have seen a significant increase in the demand and complexity of referrals.
- 2.4** This continues to place our staff under significant pressure and their wellbeing has been utmost in the minds of the partner organisations.
- 2.5** Service delivery has in the main returned to near normal arrangements, with hybrid working continuing for those staff not in citizen-facing services.
- 2.6** The impact of the cost of living crisis in particular has had a significant effect on the availability of domiciliary care. Competition from other sectors, particularly hospitality, retail and seasonal work is drawing the workforce away from social

care. Whilst every effort is being made to address this locally and nationally, the impact remains severe.

- 2.7** Domiciliary care is the bedrock of integrated health and care services to support people to stay independent at home and to enable them to return home from hospital. For Social Services in the Vale of Glamorgan, it remains one of our highest risk areas at present.

New RPB funding arrangements - revenue

- 2.8** Welsh Government has introduced a new 5-year fund to support the delivery of integrated care across Wales. The Regional Integration Fund (RIF) has continued to support many of the successful projects and services delivered across the Vale of Glamorgan which were formerly funded through the Intermediate Care Fund (ICF).
- 2.9** Funding to support the 'acceleration' of new integrated deliver models has been made available to develop the Vale of Glamorgan's *Wellbeing Matters* service, ensuring people get access to the right information, advice and assistance and assessment to triage their needs for the right services. This model continues to develop building upon the arrangements at Contact One Vale (C1V). The fund is also supporting the development of learning disability services, ensuring people with learning disabilities have equal access to primary care and day opportunities.

RPB Capital Funding

- 2.10** This year has seen the introduction of new capital funding streams overseen by the partnership. The *Housing with Care Fund* (HCF) supported the development of housing-related care and support and intermediate care, while the *Integration and Rebalancing Care Fund* (IRCF) targets the development of integrated health and wellbeing hubs, rebalancing the residential care market and supporting the elimination of profit from children's services.
- 2.11** As a partnership, we are required to develop a 10-year integrated capital strategy, enabling us to take a whole system view on the capital developments needed to support people to live well in their communities.
- 2.12** In the Vale of Glamorgan, there are schemes in various stages of development including provision for people with physical disabilities and complex care needs, the development of the Integrated health and wellbeing centre at Barry Community Hospital and the Wellbeing Hub at Penarth.

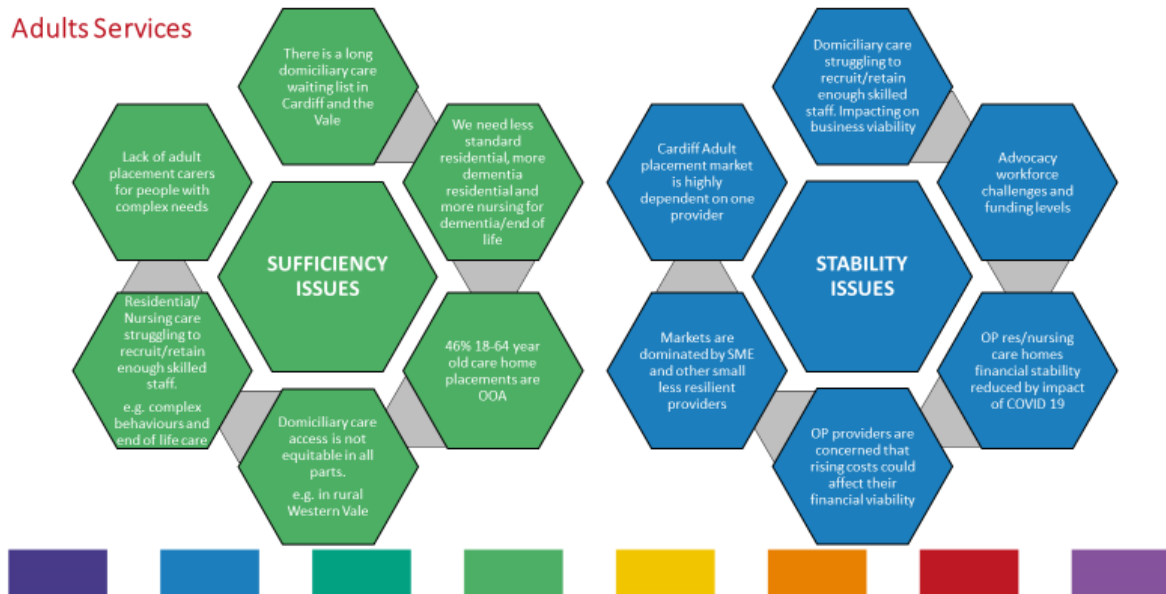
Commissioning

- 2.13** The Regional Commissioning Board is chaired by the Director of Social Services in the Vale of Glamorgan and has delivered the **Market Stability Report** this year, providing an assessment of the stability and sufficiency of the care market to meet the needs of the local population.
- 2.14** The headline messages from the assessment are shown in the following illustrations:

i. Adult services across the region



Adults Services



ii. Children’s Services across the region



Children Services



2.15 The Market Stability Report can be accessed [here](#).

2.16 The RPB has also completed the **Population Needs Assessment** in 2022. This 5-yearly requirement assesses the changing needs of the health and wellbeing of the region’s population. Set alongside the Public Services Board Wellbeing Assessment, they provide a basis for planning, developing and delivering health

and care services across the region and are important sources of insight and intelligence for the RPB and its partners.

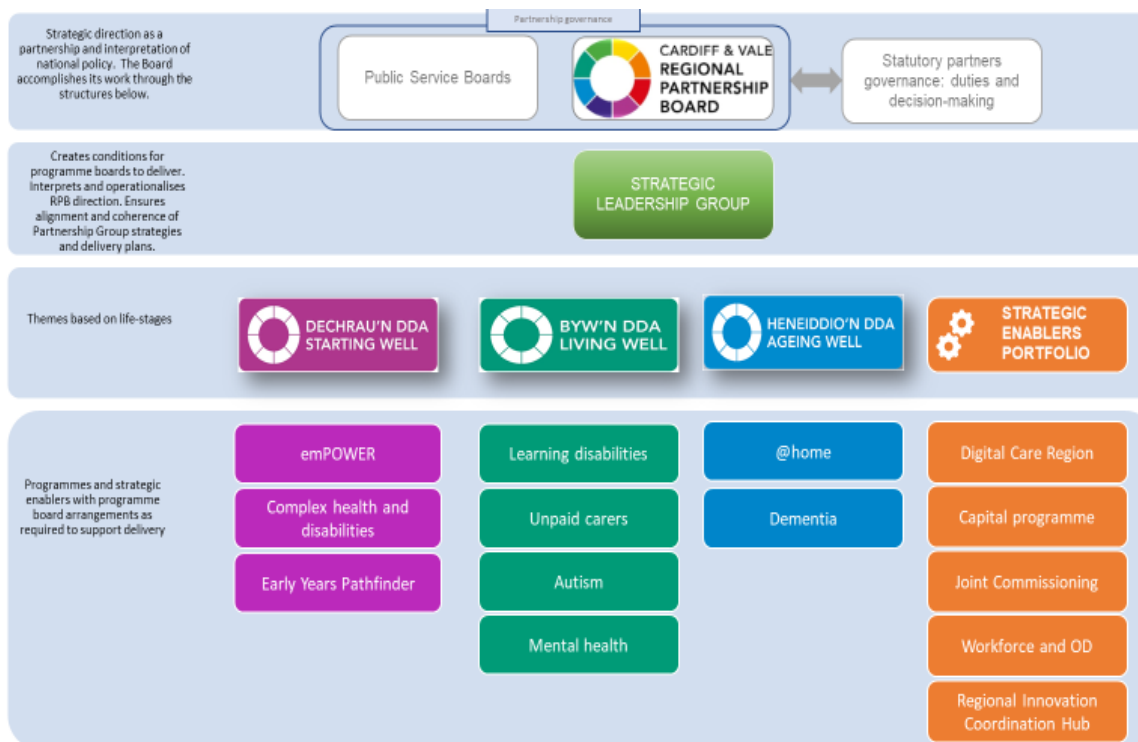
- 2.17** The Population Needs Assessment and Vale Public Services Board Wellbeing Assessment can both be accessed [here](#).

Joined up services for winter

- 2.18** The RPB brings together the partners to plan to meet the additional demands placed on the health and care system during the winter period. This year's planning commenced in August, bringing together all of the partners to plan the approach and in anticipation of a highly challenging winter ahead given the uncertainty of COVID19 and its ongoing impact on staffing across our sectors.
- 2.19** For the Winter of 2022, no additional funding was made available by Welsh Government, however the RPB has ensured that additional resources have been made available to sit alongside core Council and Health Board provision to create additional capacity to support people in their communities and in particular to enable people to come home from hospital.
- 2.20** Additional staffing has been funded to increase capacity at Ty Dyfan ensuring people have a homely environment to continue their recovery and rehabilitation following a hospital stay.
- 2.21** The RPB has supported the Council to invest in an innovative falls service, commissioning St John's Ambulance to respond to fallers and help them stay at home. This service is ensuring that people who can stay at home do so, and reduces demand on both ambulance and hospital services.
- 2.22** The integrated Vale Community Resource Service is also launching an in-reach service into hospitals across the Region, using their expertise as *Trusted Assessors* to get people home in a timely way.
- 2.23** The health and care system remains under extreme pressure as we enter Winter 2022.

The RPB's work programme

- 2.24** The RPB's overarching purpose is to improve health and wellbeing outcomes for the region's population through working together across the statutory services (Councils and Health Board), third Sector and independent sector. Its work is themed across the main life stages: starting well, living well and ageing well.
- 2.25** The following provides a summary of the range of work the RPB oversees and whilst it has a regional role, implementation is in response to local priorities.



2.26 Starting Well headlines

The emPOWER programme focuses on reducing the fragmentation of services for children and young people with emotional wellbeing and mental health needs.

Together we are:

- a. Developing a regional Joint Recovery Service to provide wraparound psychologically-informed care, therapy and accommodation when required for children and young people with acute emotional wellbeing needs
- b. Testing an early intervention and prevention joint outcome meeting between West Quay GP (Barry) and Vale Early Help to ensure the child and their family have access to a coordinated response across services at an early stage.

2.27 Living Well headlines

i. Unpaid carers

- a. The RPB has supported the development of a Carers Charter. Its aim is to help to identify unpaid carers in the region, and help them access support; help unpaid carers to feel supported and recognised through a set of commitments by the Health Board and local authorities and support the development of services for unpaid carers in the region.
- b. The Carers Gateway is on target to reach over 300 carers this year and provide support directly to them, such as counselling.

ii. People with neurodiversity needs

The RPB has now aligned a number of funding sources to reflect the wide range of needs associated with neurodiversity, across all ages. Recent funding

from Welsh Government in recognition of significant unmet need in this area, will enable partners to increase access to assessment for children and young people, provide workforce training and address service capacity issues in the Integrated Autism Service.

iii. People with learning disabilities

- a. The Vale of Glamorgan Local Authority has developed a purpose-built **transition smart house** for young adults with a learning disability transitioning from school or college. Using a range of the most up-to-date smart technologies, young people will be supported to develop their independence within the home for a maximum of two years prior to moving into longer-term accommodation.

Located in Penarth, the property is close to numerous parks and leisure facilities and has excellent access to public transport. The house can accommodate four young people with learning disabilities and includes one ground floor facility which will be suitable for a wheelchair user. The facilities will be bright and spacious and include a fully fitted kitchen, dining, lounge and recreational areas. The bedrooms are of generous size and offer good access to excellent accessible bathroom facilities.

- b. This short video shows how services are benefitting from directly employing people with a lived experience [Stacey and Joanna's Story - Lived Experience - YouTube](#)

2.28 Ageing Well headlines

The RPB's Ageing Well theme is currently focusing on two major change programmes:

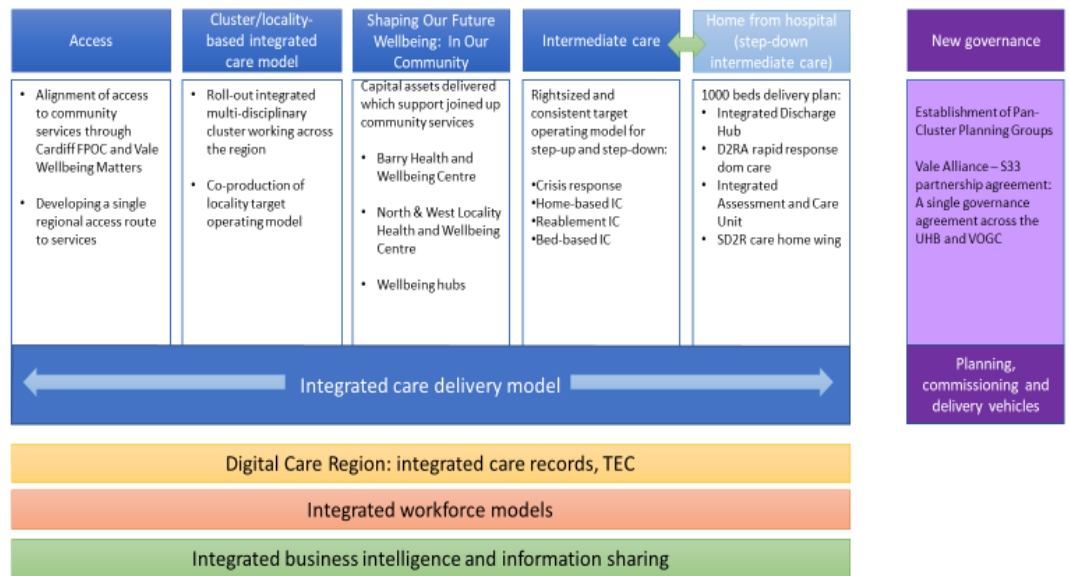
i. People with dementia

- a. Vale of Glamorgan Council has been working with local businesses to ensure that the Vale is Dementia Friendly. The website gives an overview of how this important work supports people living with dementia and their carers: [News \(dementiafriendlyvale.com\)](#) and [Dementia-friendly communities](#)
- b. Partners are working together to improve access to joined up care and support including Memory Assessment Services and implementation of the All Wales Dementia standards.

c. @home programme

This is a major programme dedicated to developing community based integrated care services, focused on enabling people to remain healthy, well and independent at home. In the Vale, this builds on a strong foundation of the integrated Vale Community Resource Service, Wellbeing Matters and integrated roles.

@home high-level programme overview



2.29 Forward Look

The RPB is required to produce a Joint Area Plan every 5 years. The next is due in March 2023 and partners are currently considering the priorities that need to be addressed by working in partnership.

The focus remains on our overarching themes of starting well, living well and ageing well and on delivering person-centred, joined up care and support.

As well as the development of longer-term integrated care, we continue to work closely as partners to address the urgent and immediate issues impacting on residents and our workforce, in particular securing the domiciliary care workforce and supporting people to return home from hospital.

23/24 will continue to be challenging as we balance increasing demand and complexity with reduced funding. The RPB needs to balance the continued development and modernisation of health and care services with responding to immediate service pressures.

3. How do proposals evidence the Five Ways of Working and contribute to our Well-being Objectives?

- 3.1 The work of the Cardiff and Vale of Glamorgan Regional Partnership Board plays a key role in supporting the delivery of sustainable social services in the long term. Engagement, integration, involvement, collaboration and prevention are all founding principles of the Partnership as demonstrated within the Terms of Reference for the Board.
- 3.2 The emerging programmes set out above, will enable the RPB to have a greater impact on the delivery of the wellbeing objectives.

4. Climate Change and Nature Implications

- 4.1** There are no climate change or nature implications as a direct result of this report.

5. Resources and Legal Considerations

Financial

- 5.1** Welsh Government has introduced the new 5-year Regional Integration Fund during 22/23. The fund will include support to deliver:
- a. National programmes e.g. dementia and integrated autism services.
 - b. RPB infrastructure to deliver Part 9 duties of the Social Services and Wellbeing (Wales) Act.
 - c. Acceleration of the delivery of new care models.
 - d. Embedding of successful projects previously funded by ICF and other funds.
 - e. Support to the social value (third) sector.
- 5.2** There is an expectation that partners will contribute match funding over the period of the new fund with a view to ultimately embedding the new models of care developed through this fund into business as usual across the partnership.
- 5.3** This will commence from financial year 24/25 when the RIF Acceleration Fund Welsh Government intervention rate drops from 90% to 70~% as we are expected to 'embed' successful schemes that have demonstrated a better impact and efficiency than alternative existing services.
- 5.4** Similarly, current services funded through the RIF Embedding Fund will see a reduction in the WG intervention rate of 70% to 50% in year 3 (25/26).
- 5.5** Currently there is no clear plan to address this by any of the partner organisations.

Employment

- 5.6** The RIF predecessor funds (ICF and Transformation Fund) have enabled the employment of key staff within the Council. Every effort has been taken to limit the number of permanent roles. Nevertheless, the 7-year period of the ICF's existence along with the need to secure key skills set from a limited pool of availability has meant that a significant pool of permanent staff are now funded through this short-term resource. In the transition from ICF/Transformation Fund to the RIF, the RPB has ensured that all posts dependent on that funding have been secured, notwithstanding the risk set out above in paragraph 5 as a result of reducing WG funding over the lifetime of the RIF.

Legal (Including Equalities)

- 5.7** The work outlined in this report sets out the progress of the RPB in meeting the requirements of Part 9 of the SSWWA.

6. Background Papers

The Cardiff and Vale Regional Partnership Board Annual Report 2021/22 can be found [here](#).