

# **School Performance Report 2016-2017**

# Key terms

- **Foundation Phase (FP)**
- Nursery, reception, years 1 and 2, pupils aged 3 – 7
- **Key Stage 2 (KS2)**
- Years 3 – 6 of primary schools, pupils aged 7 – 11
- **Key Stage 3 (KS3)**
- Years 7 – 9 of secondary schools, pupils aged 11 – 14
- **Key Stage 4 (KS4)**
- Years 10 – 11 of secondary schools, pupils aged 14 – 16
- **Post 16 (KS5)**
- Years 12 and 13

# Foundation Phase

- The focus is on the following Key Performance Indicators/Areas of Learning:
  - Personal Social Development, Well-Being and Cultural Diversity (PSDWBCD)
  - Language, Literacy and Communication (LLC)
  - Mathematical Development (MD)
  - **Foundation Phase Outcome Indicator (FPOI)** (% of pupils attaining the expected outcome or above in **all** three areas of learning)
  - **All are teacher assessed.**

## Key stages 2 and 3

- The focus is on performance in the three core subjects individually and in combination:
  - English/Welsh first language
  - Mathematics
  - Science
  - **Core Subject Indicator** (% of pupils attaining the expected level or above in **all** three core subjects).
  - **All are teacher assessed.**

## Expected level of attainment

- This is the level on the national curriculum (NC) scale that the *majority* of children are expected to achieve by the end of the key stage:

- Foundation Phase      - outcome 5
- Key Stage 2              - level 4
- Key Stage 3              - level 5

**All are teacher assessed.**

## Key stage 4

- The focus is on the Key Performance Indicators:
  - Level 1 Threshold (5 A\*-G or equivalent)
  - Level 2 Threshold (5 A\*-C or equivalent)
  - **Level 2 Threshold including English/Welsh and mathematics**
  - Core Subject Indicator ( A\*-C in all 3 of English, mathematic and science)

# Key stage 4 changes 2017

- A new set of more rigorous GCSE qualifications was introduced in Wales for 2017 (Mathematics, Mathematics–Numeracy, English Language, Welsh Language, English Literature and Welsh Literature).
- Also, new rules were introduced for reporting school performance measures. (Best of mathematics, English language only, limit on the proportion of vocational qualifications that could count in L2)
- **Much less importance can be given to comparing performance in a particular subject or indicator from 2016 to this 2017.**
- More changes to the rigour and format of other GCSE subjects in 2018 and further alterations to reporting arrangements. (Wbacc, “Capped 9” and the importance of double science GCSE, “first strike” counting for resits)

## Key stage 5 / Post 16

The focus is on performance in the **Level 3 threshold**, the equivalent to 2 A levels at grade A-E.



# FSM benchmarking

- Schools are grouped and compared according to the proportion of pupils eligible for free school meals (eFSM) averaged across the last three academic years.
- Results for any indicator within each group are divided into 4 'quarters', with 25% of schools within each 'quarter'.

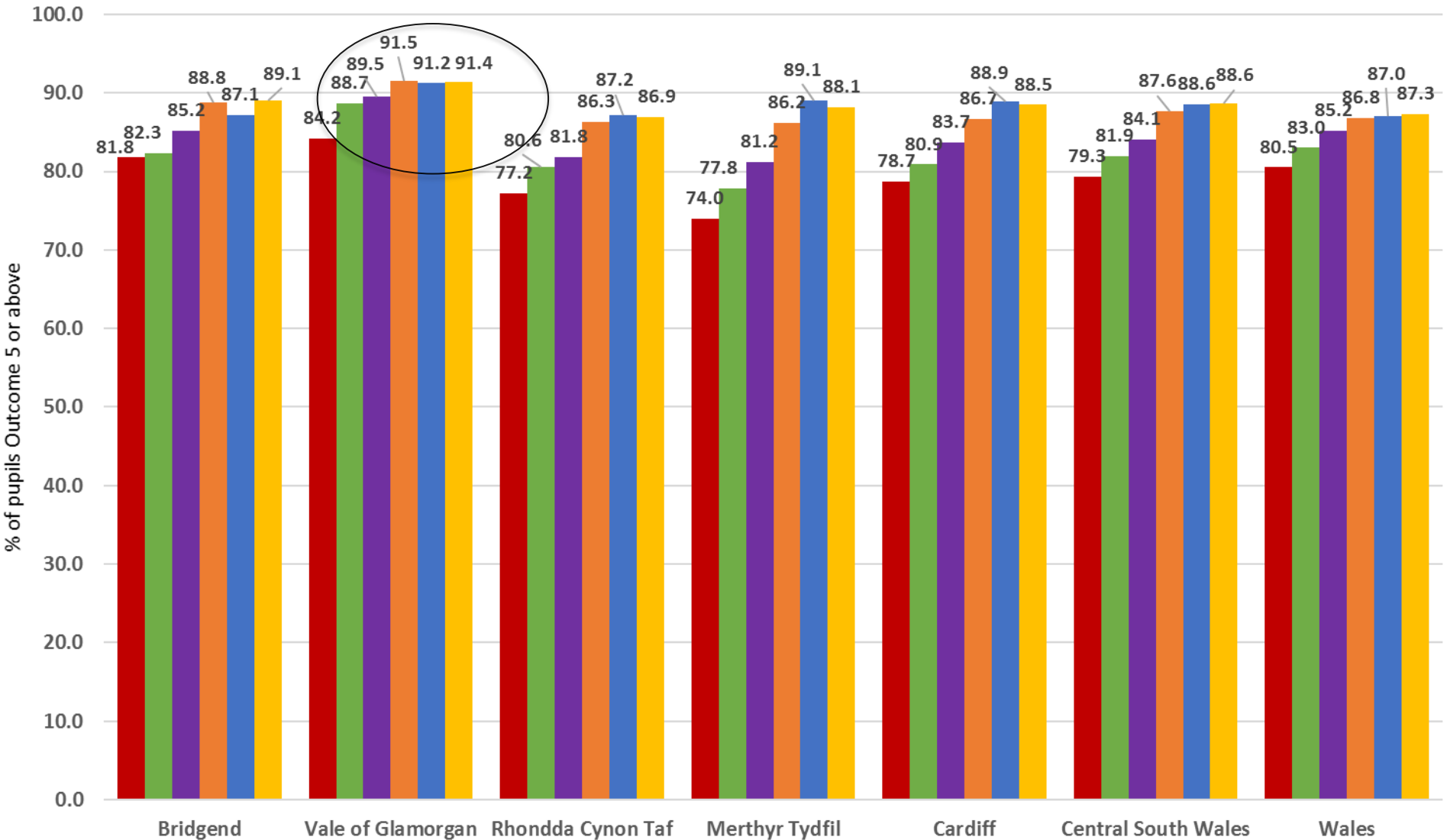
# Common abbreviations

<b>SEN (ALN)</b>	additional learning needs
<b>MAT</b>	more able and talented
<b>EAL</b>	English as an additional language
<b>LAC (CLA)</b>	looked after children
<b>eFSM</b>	eligible for free school meals
<b>nFSM</b>	not eligible for free school meals



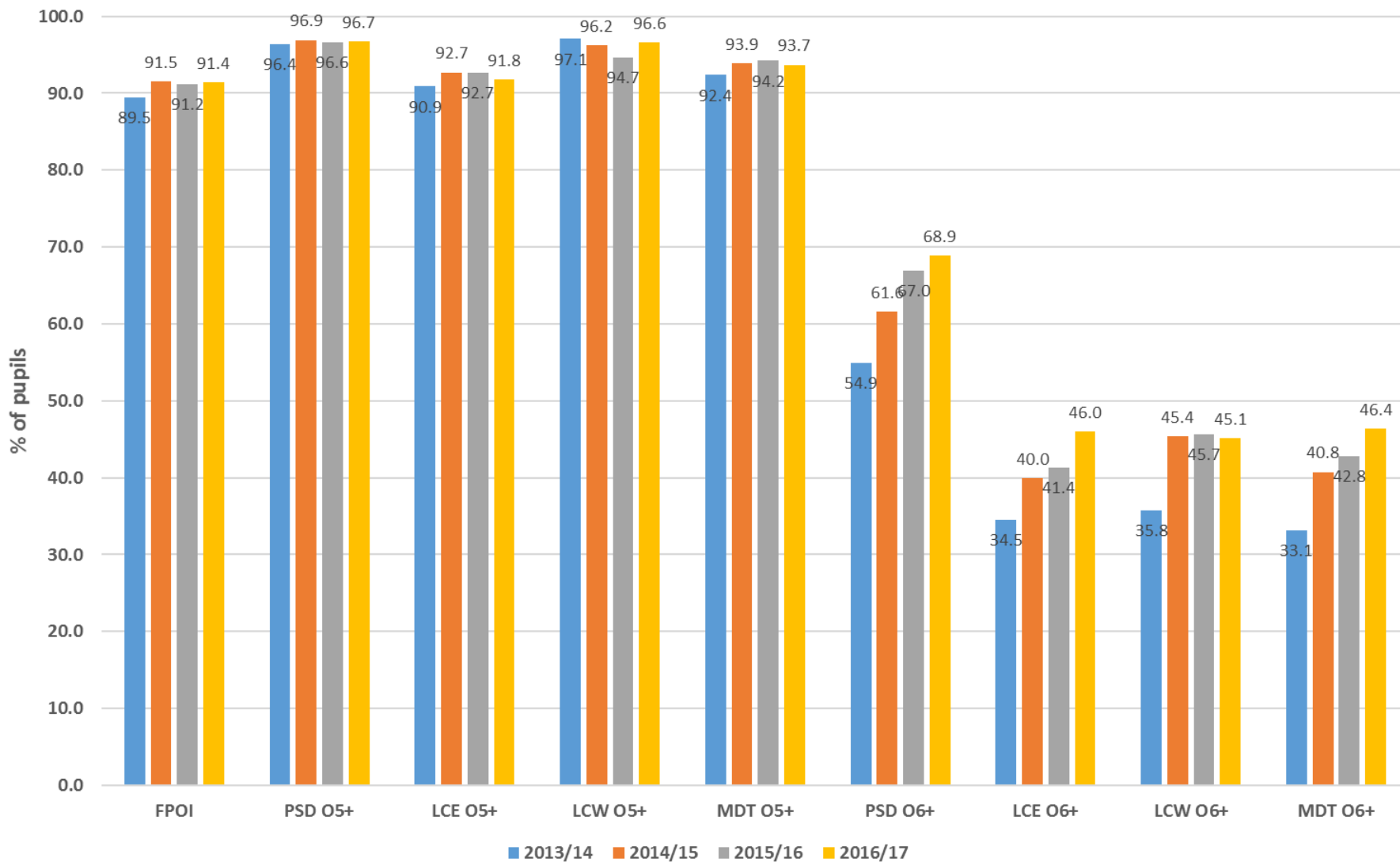
# Foundation Phase – Regional Performance

## Foundation Phase - Foundation Phase Outcome Indicator



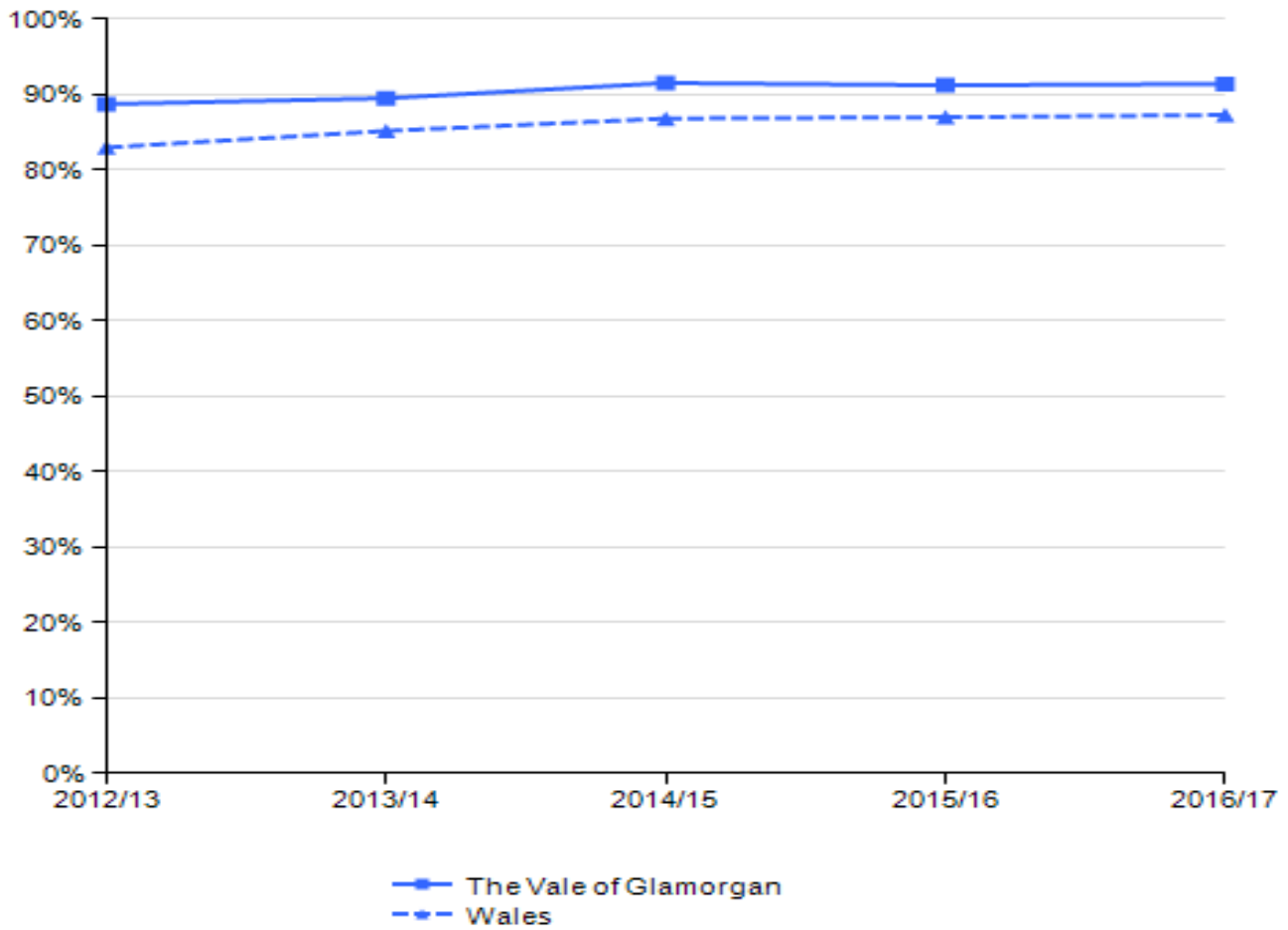
# Foundation Phase – Vale Performance

**The Vale of Glamorgan LA: Foundation Phase - Areas of Learning**



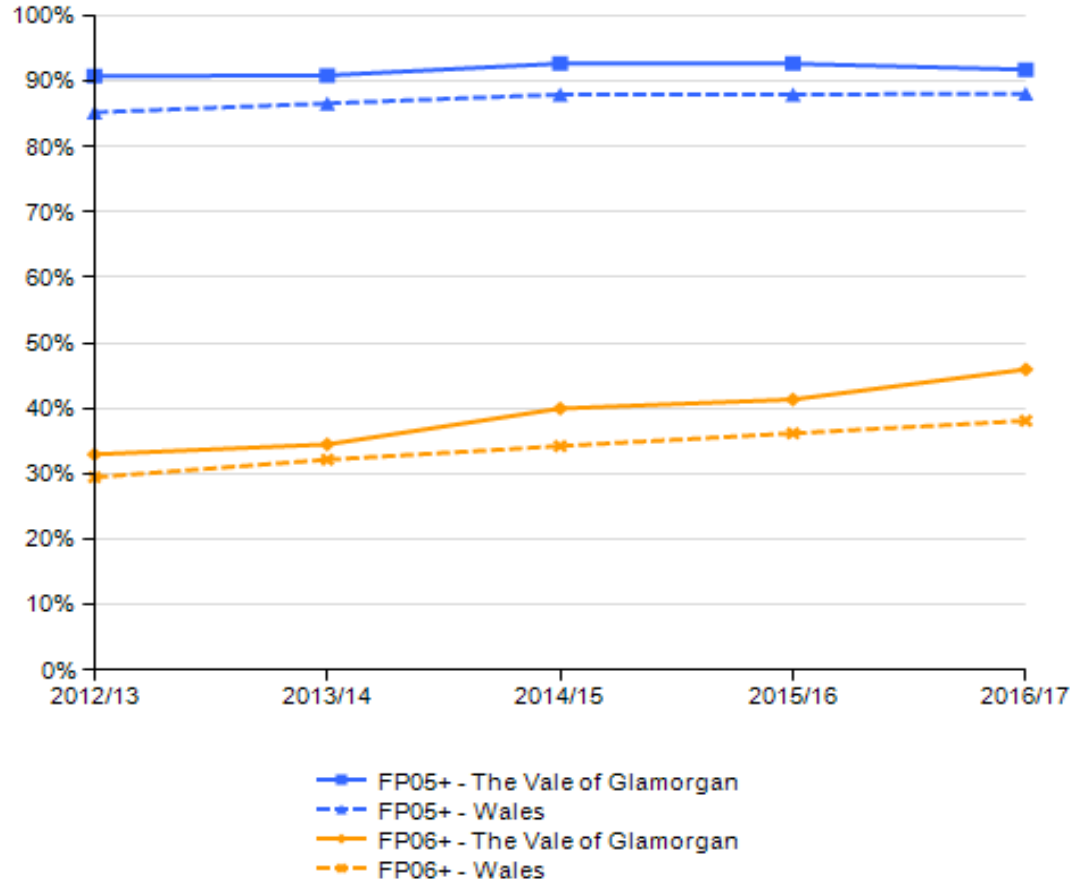
# Foundation Phase – Vale Performance

2.1 FPI - % pupils achieving



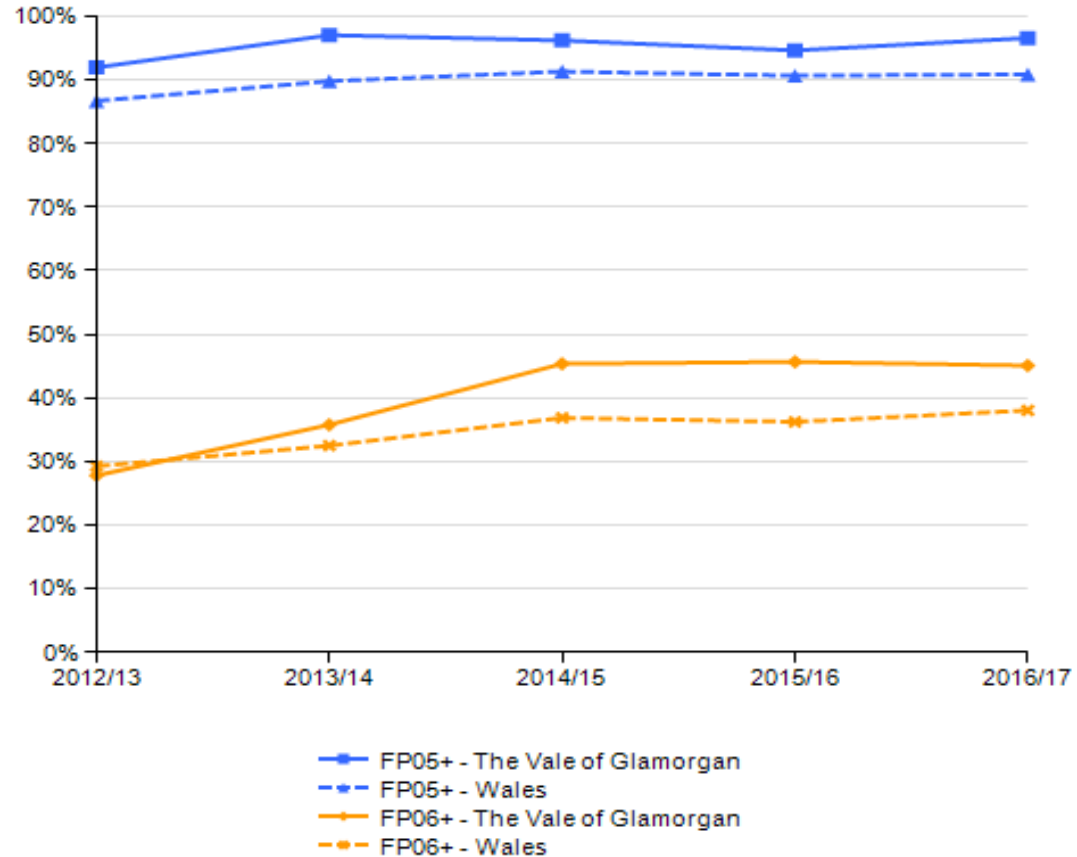
# Foundation Phase – Areas of Learning

2.2 FP Language, Literacy and Communication Skills in English - % pupils achieving FP05+, FP06+



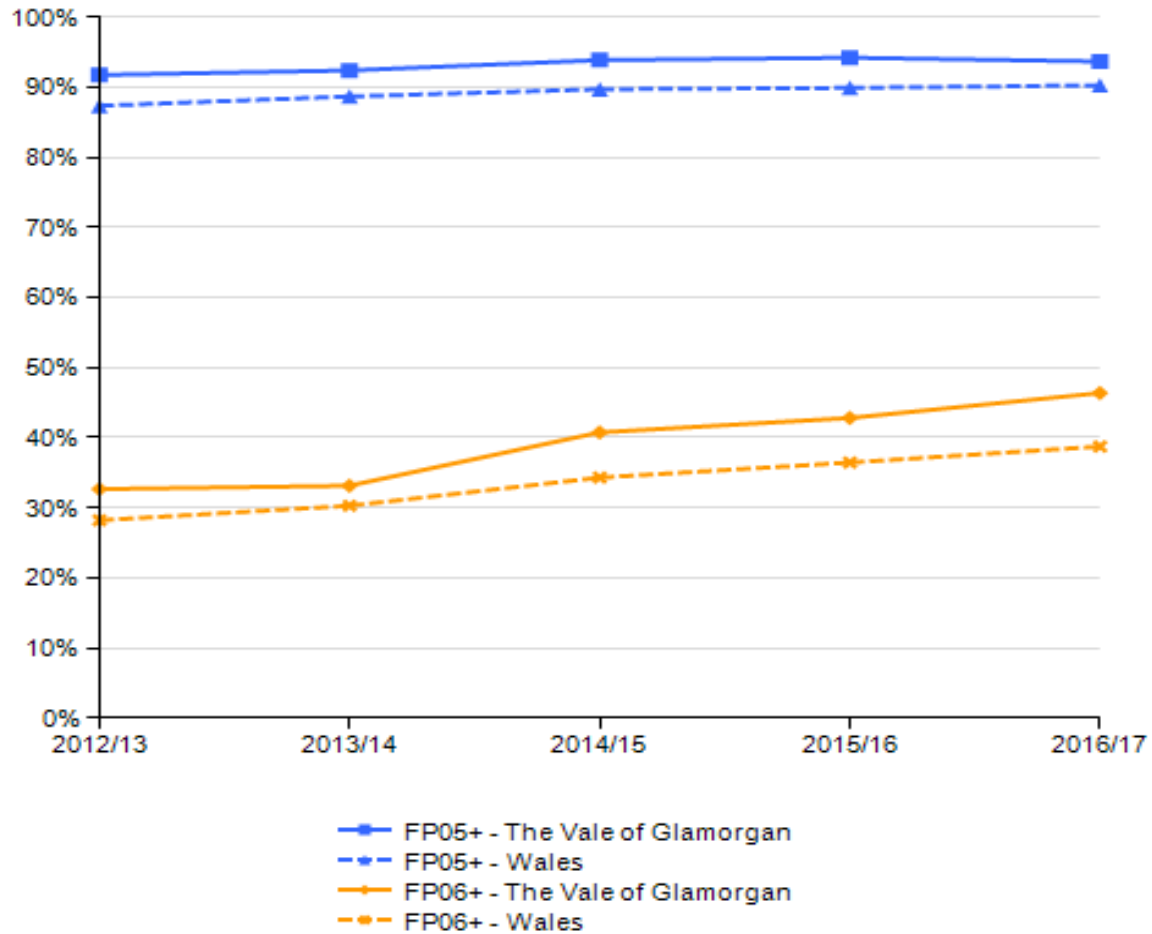
# Foundation Phase – Areas of Learning

2.3 FP Language, Literacy and Communication Skills in Welsh - % pupils achieving FP05+, FP06+



# Foundation Phase – Areas of Learning

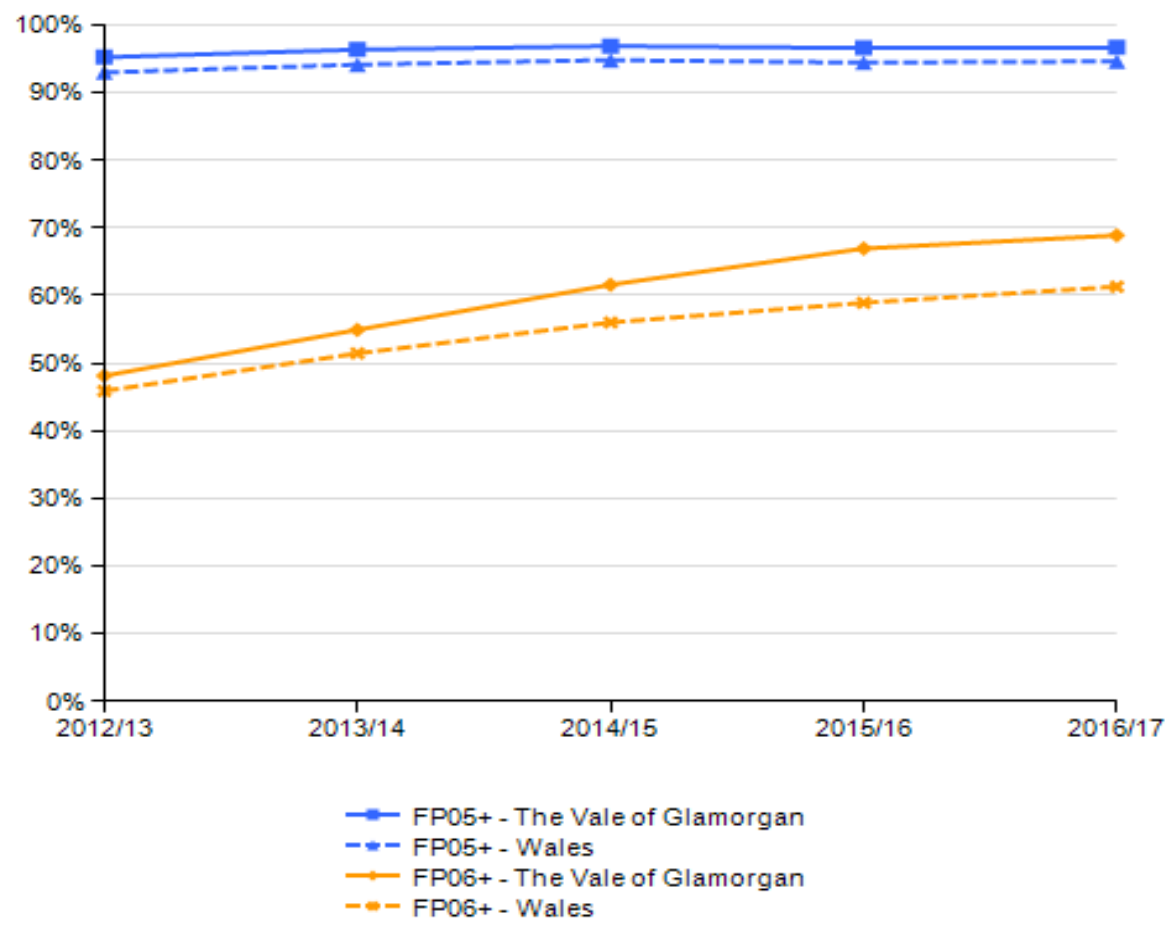
2.4 FP Mathematical Development - % pupils achieving FP05+, FP06+





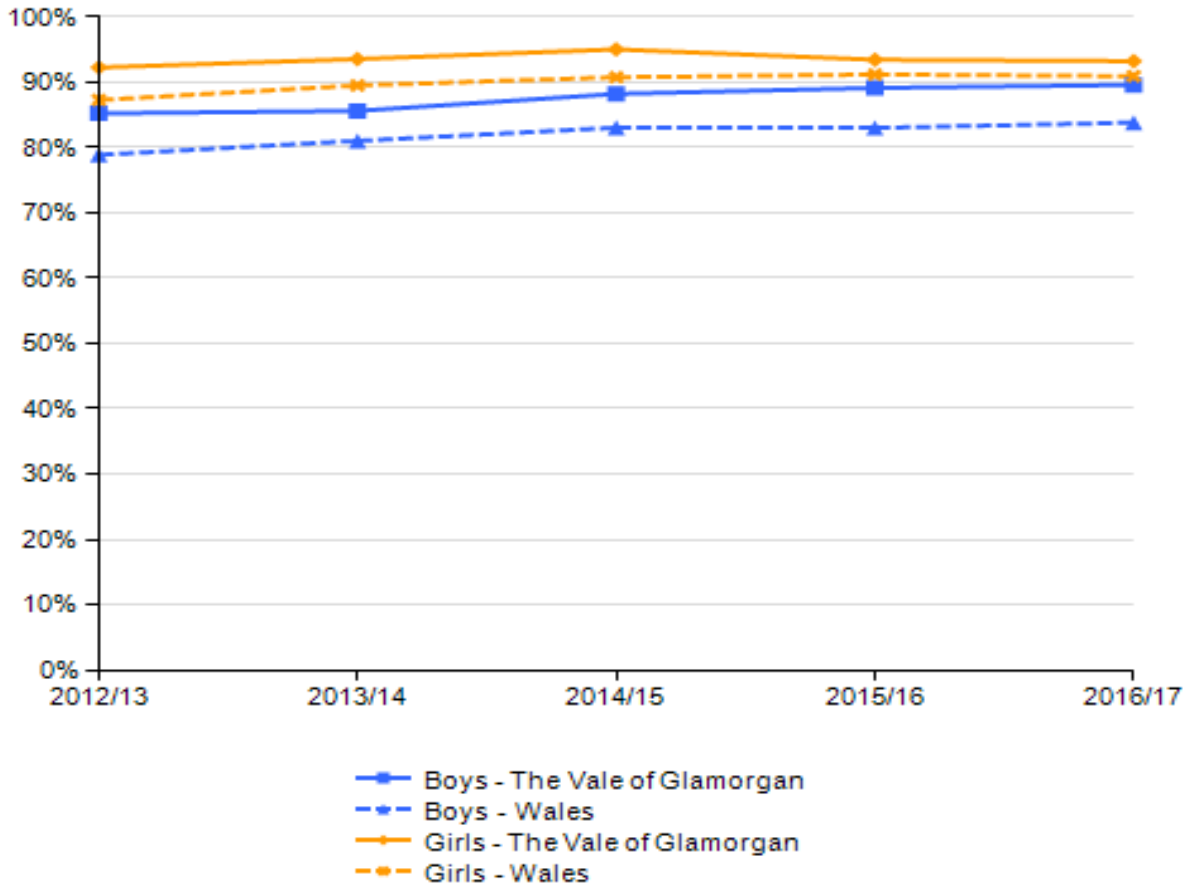
# Foundation Phase – Areas of Learning

2.5 FP Personal and Social Development, Well-Being and Cultural Diversity - % pupils achieving FP05+, FP06+



# Foundation Phase – Gender Performance

3.1 FPI - % boys & girls achieving

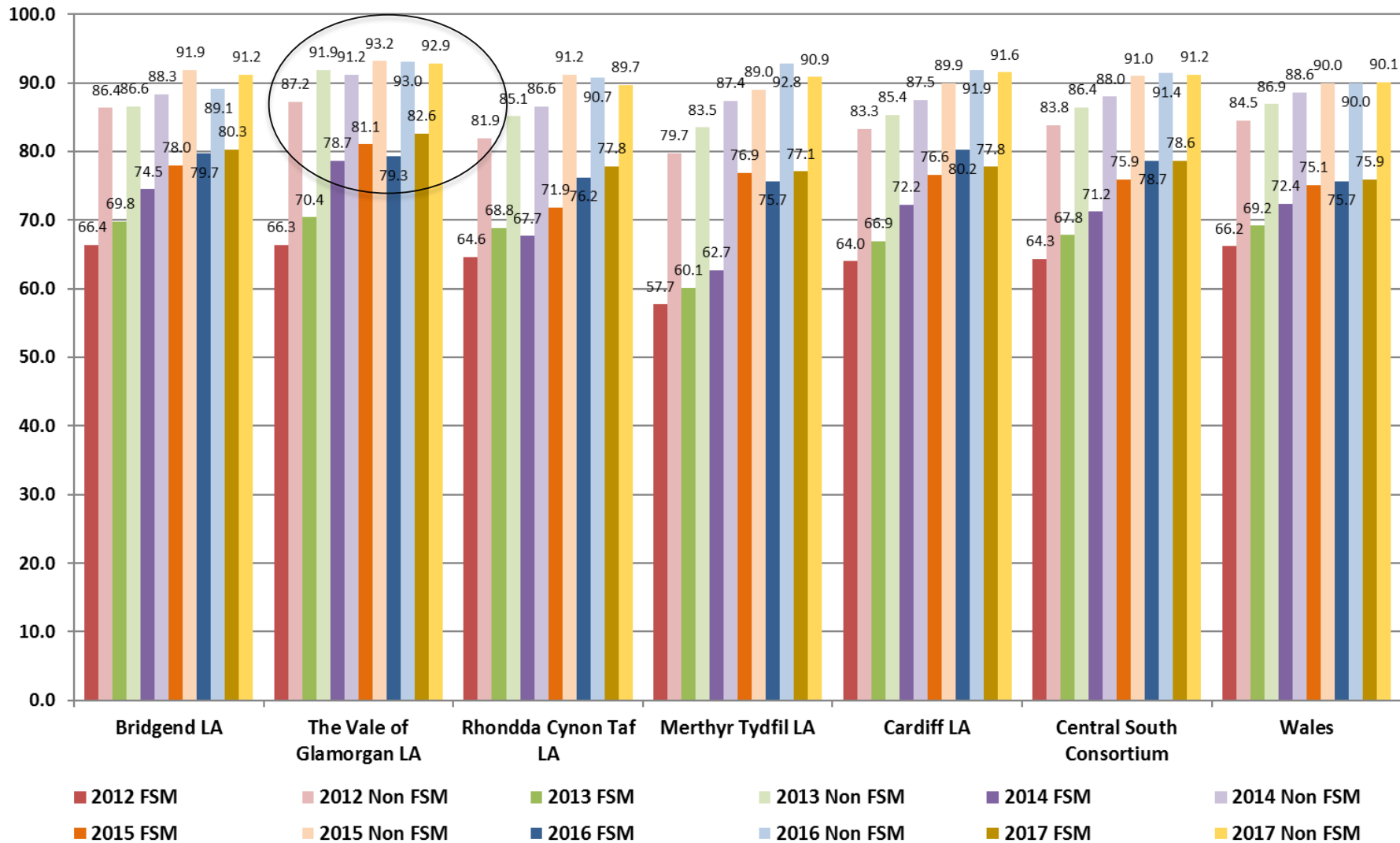




# Foundation Phase – eFSM vs non eFSM

BR

Foundation Phase - Foundation Phase Outcomes Indicator - FSM vs Non-FSM



# LA comparison - % schools in each quarter

FP Outcome 5	Quarter 4	Quarter 3	Quarter 2	Quarter 1	% above median
LLC English	18	26	34	21	55
LLC Welsh	0	14	43	43	86
MDT	11	24	44	20	64
PSD	13	22	7	58	65
FPOI	11	22	22	44	66

FP Outcome 6	Quarter 4	Quarter 3	Quarter 2	Quarter 1	% above median
LLC English	3	26	32	39	71
LLC Welsh	0	14	43	43	86
MDT	4	22	42	31	73
PSD	7	22	51	20	71

# LA rankings

FP	2015-2016	2016-2017	Change
LLC English	3 <sup>rd</sup>	3 <sup>rd</sup>	=
LLC Welsh	5 <sup>th</sup>	3 <sup>rd</sup>	↑
MDT	1 <sup>st</sup>	2 <sup>nd</sup>	↓
PSD	2 <sup>nd</sup>	2 <sup>nd</sup>	=
FPOI	2 <sup>nd</sup>	2 <sup>nd</sup>	=

The Vale of Glamorgan is performing above its indicative rank position of 5<sup>th</sup> in all Foundation Phase performance indicators

# Foundation Phase Strengths

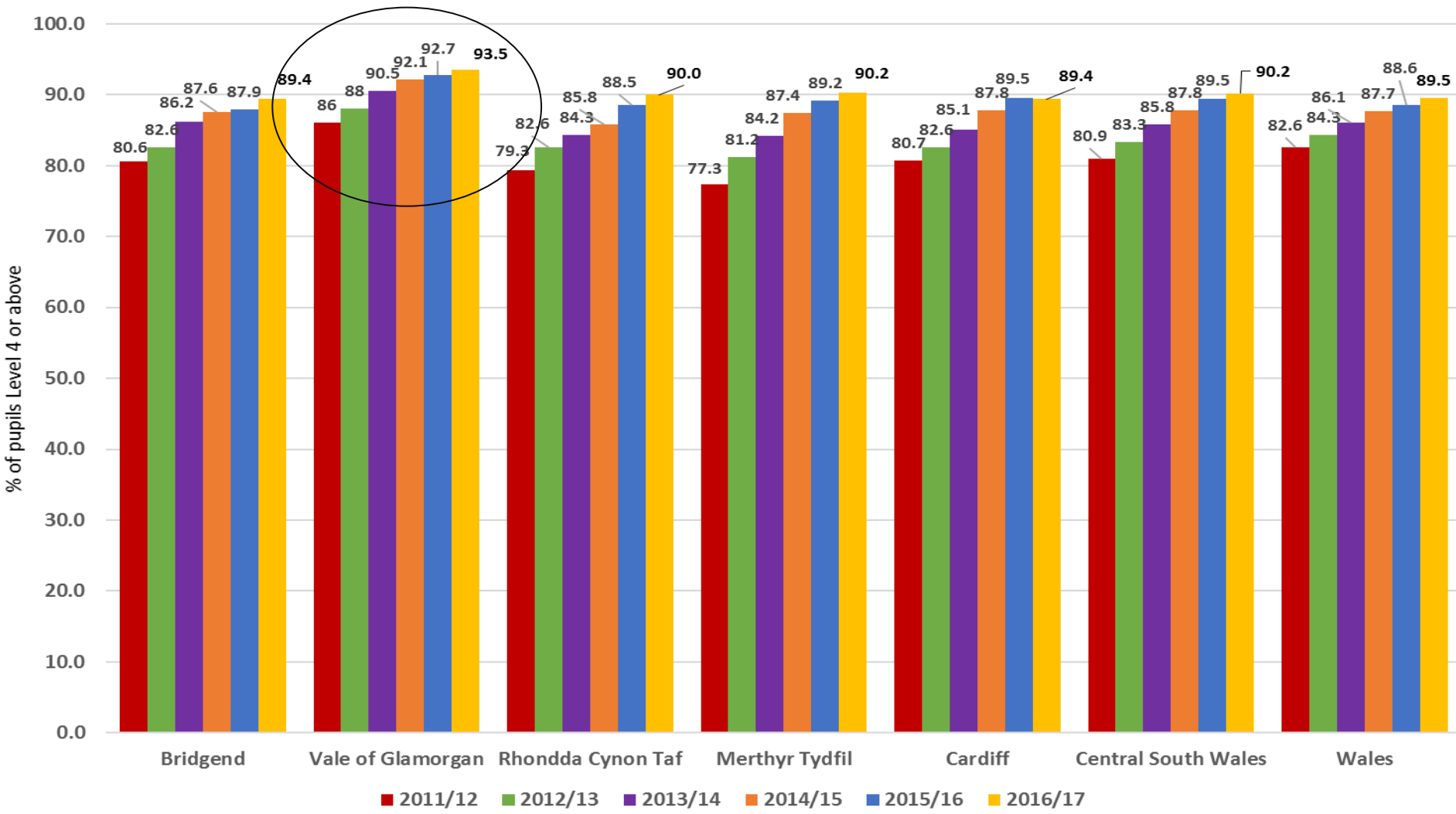
- Performance of eFSM pupils at outcome 5
- Performance at outcome 6
- Improved boys' performance at outcome 6

# Foundation Phase Areas for improvement

- Despite a narrowing of performance between boys and girls at outcome 6, this remains a priority
- The performance of eFSM pupils at outcome 6.

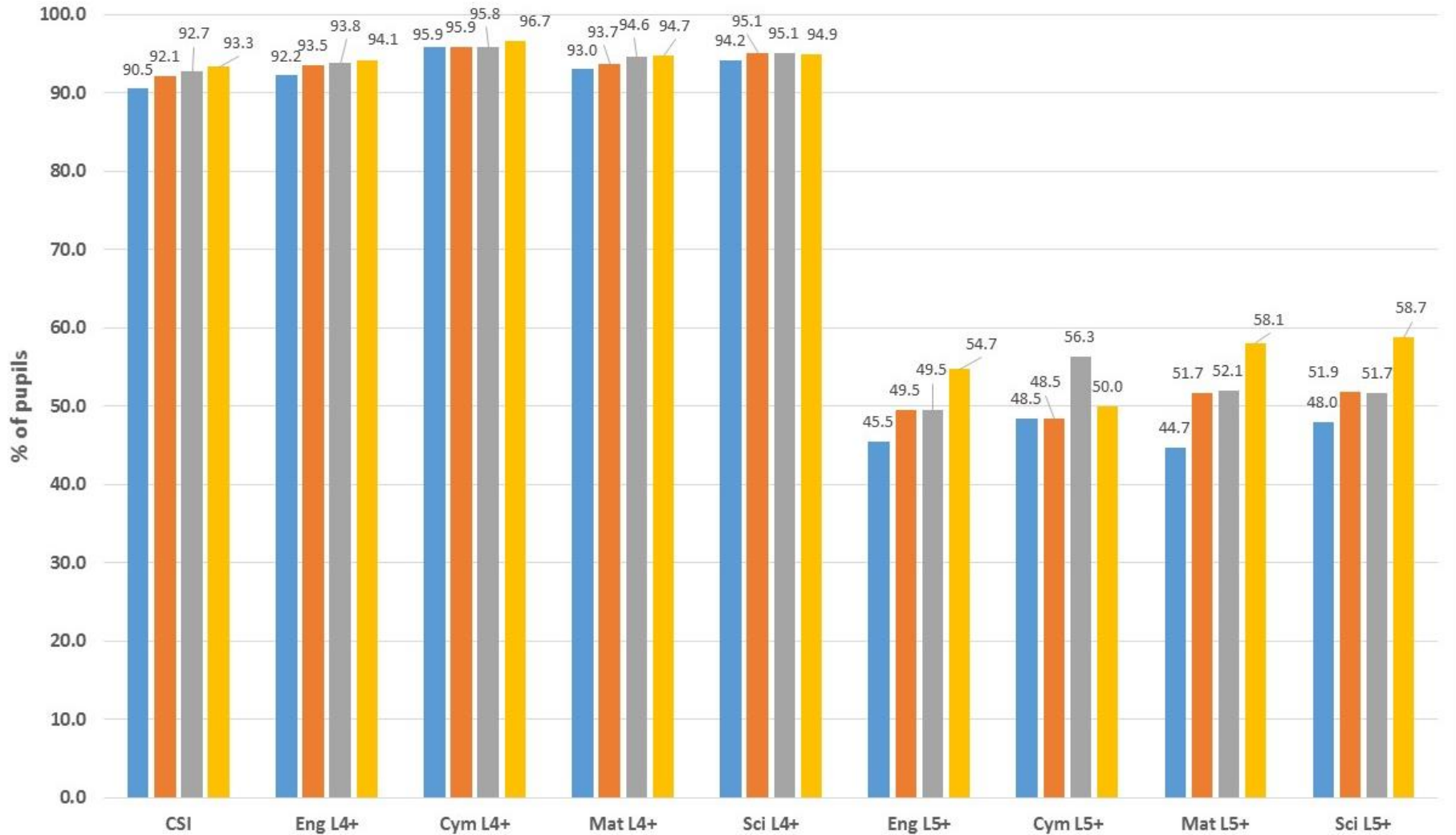
# Key Stage 2 – Regional Performance

Key Stage 2 - Core Subject Indicator



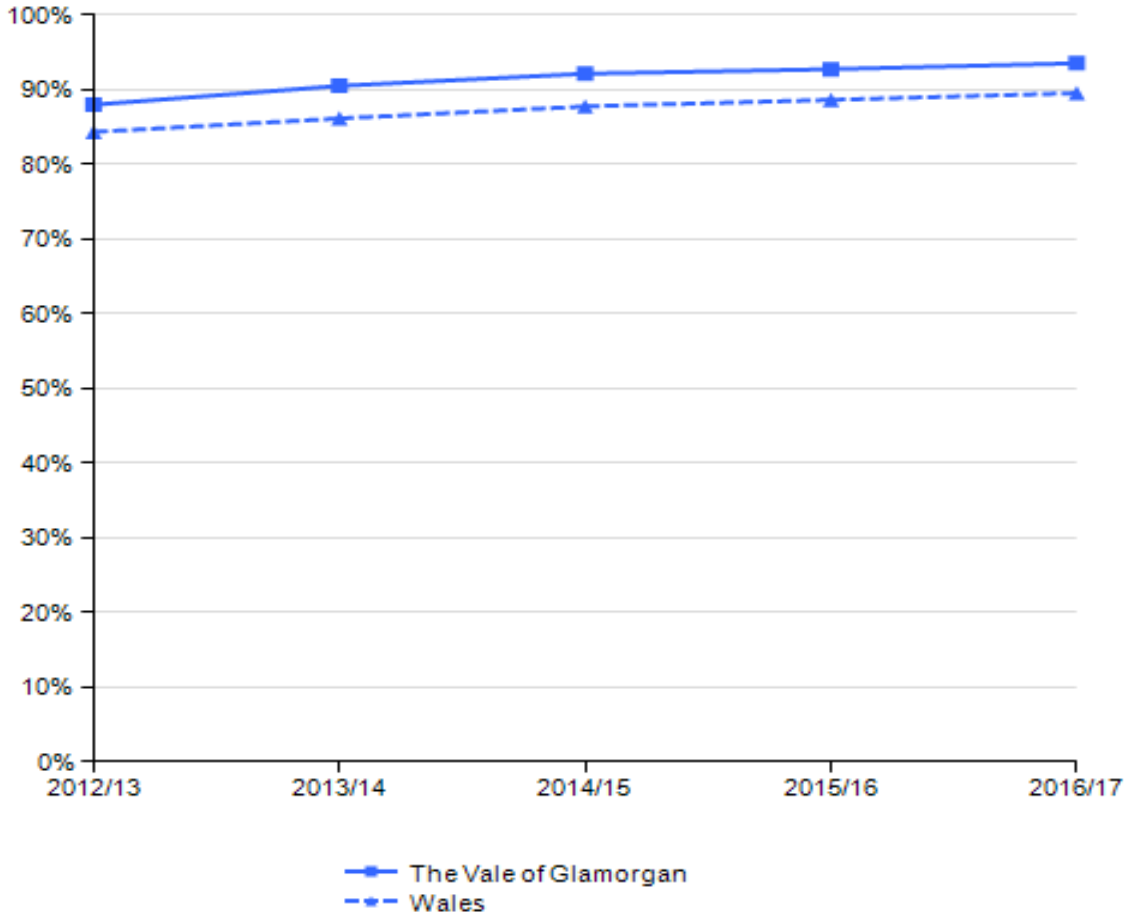


# KS2 – Vale Performance



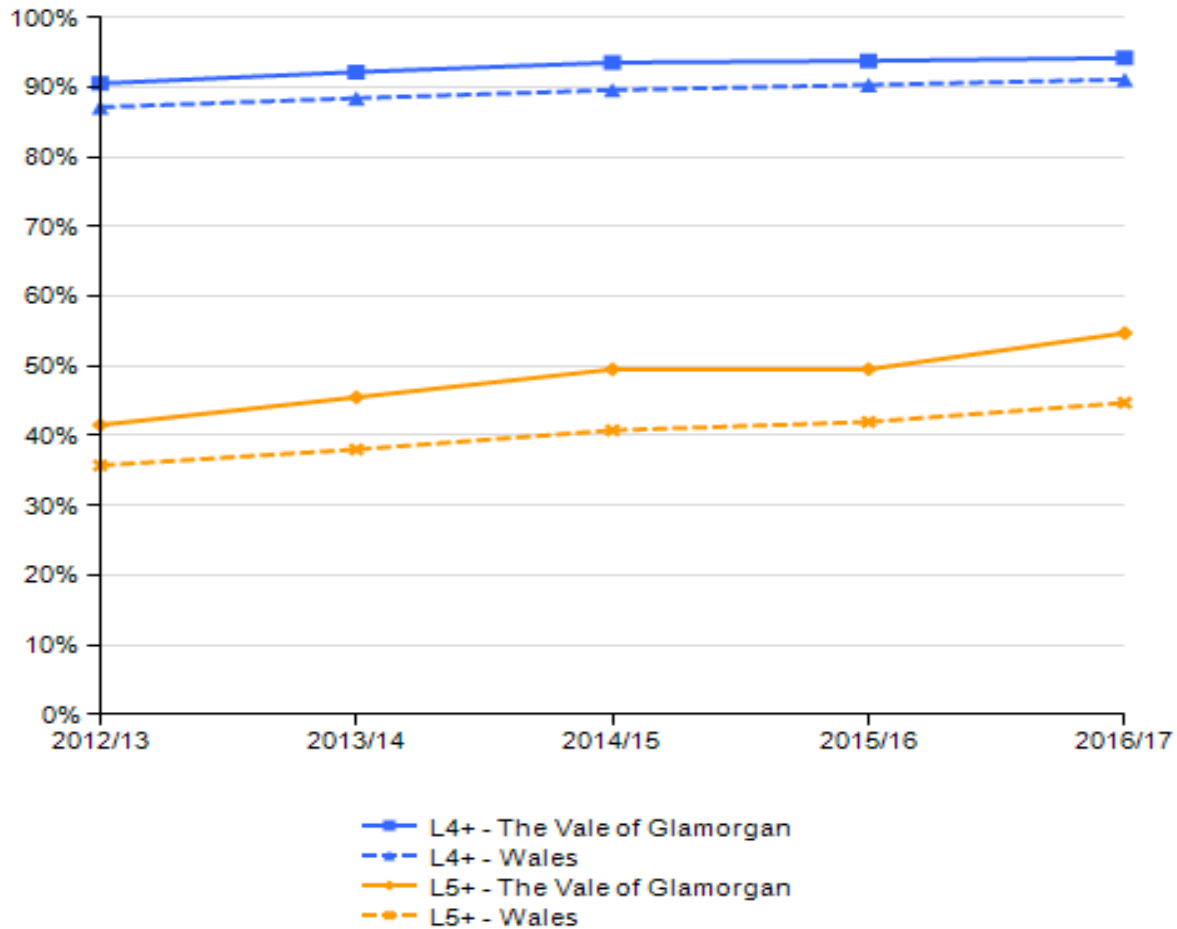
# KS2 – Vale Performance

6.1 KS2 CSI - % pupils achieving



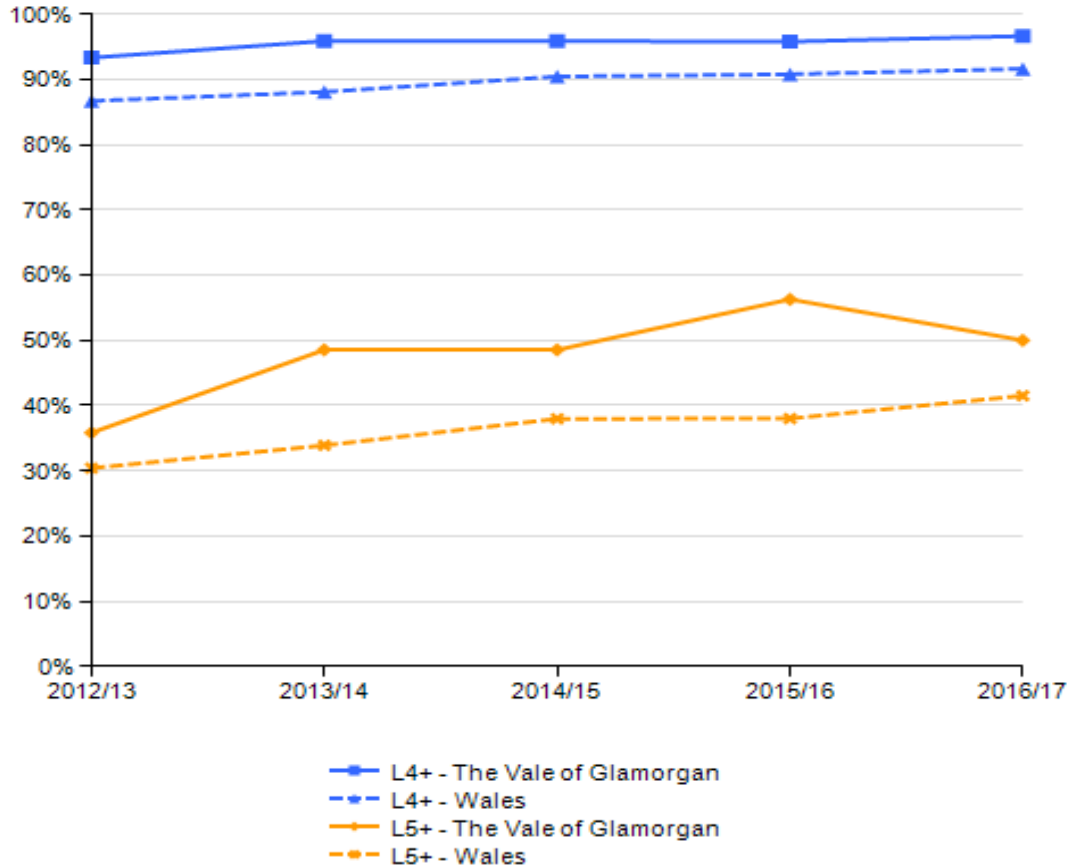
# Key Stage 2 – Core Subjects

6.2 KS2 English - % pupils achieving L4+, L5+



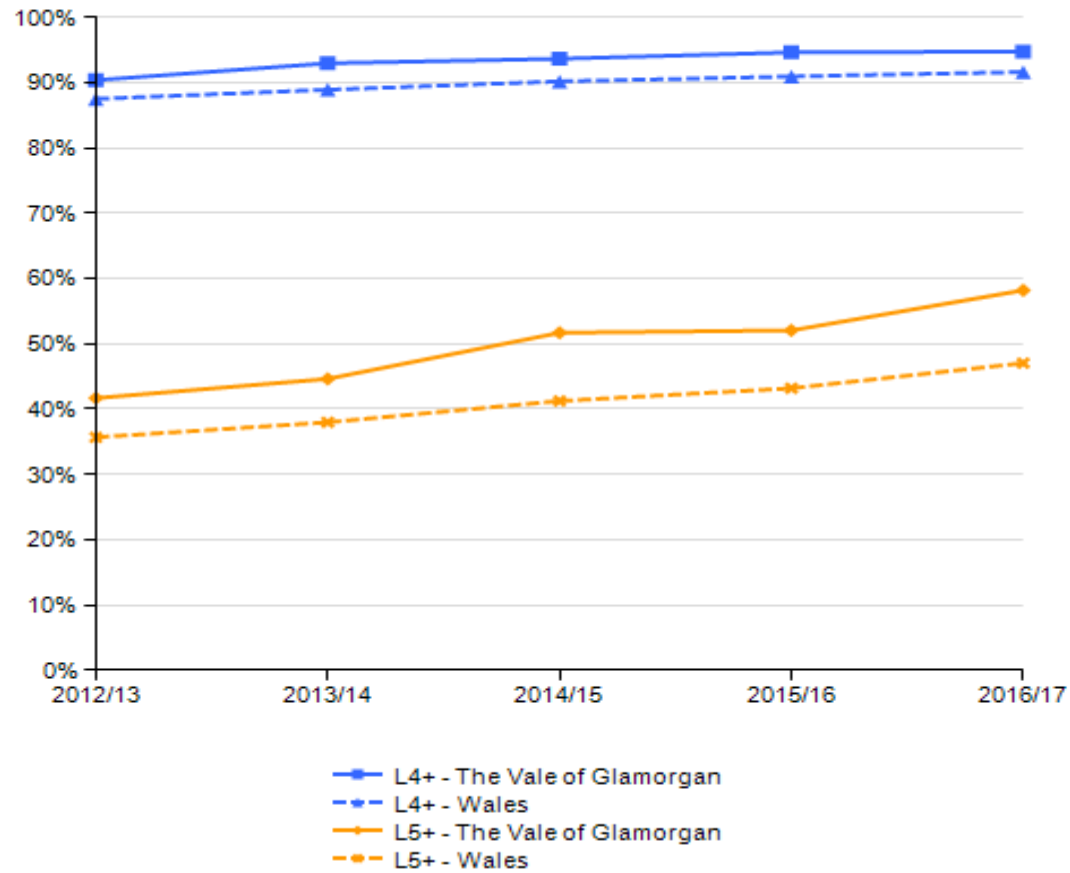
# Key Stage 2 – Core Subjects

6.3 KS2 Welsh as 1st Language - % pupils achieving L4+, L5+



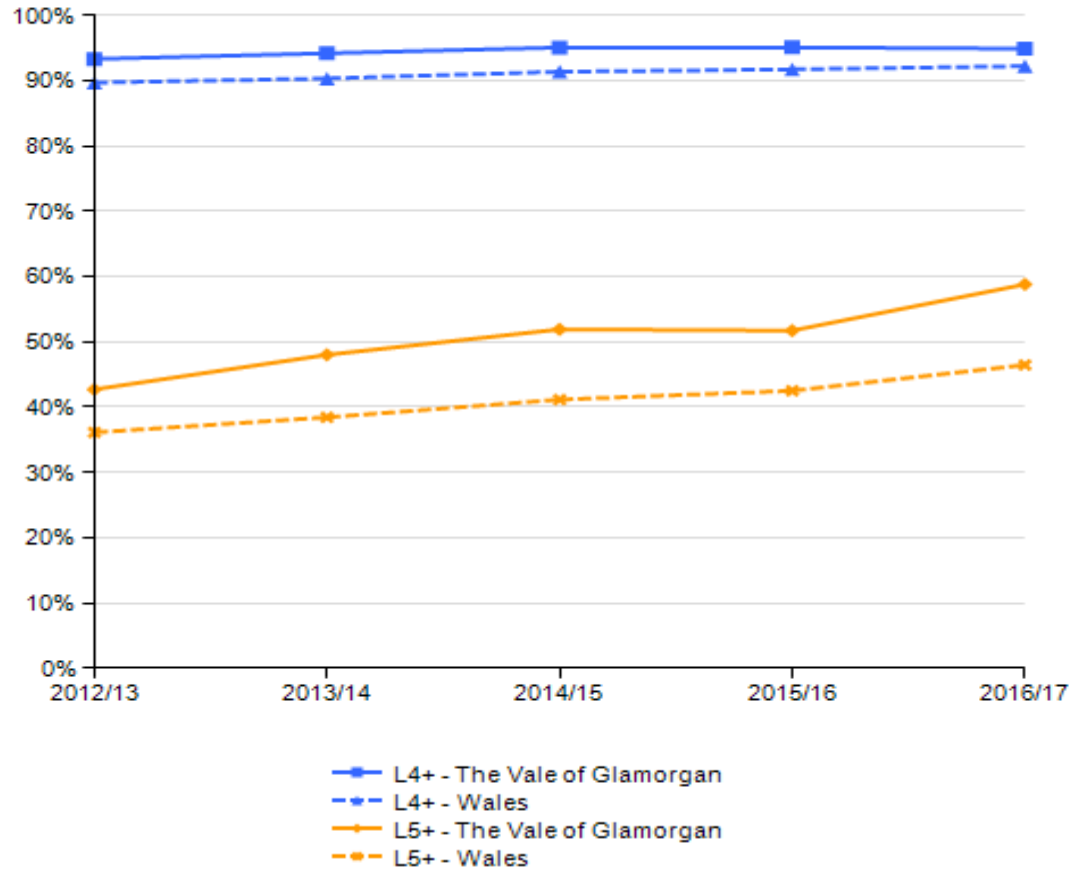
# Key Stage 2 – Core Subjects

6.4 KS2 Mathematics - % pupils achieving L4+, L5+



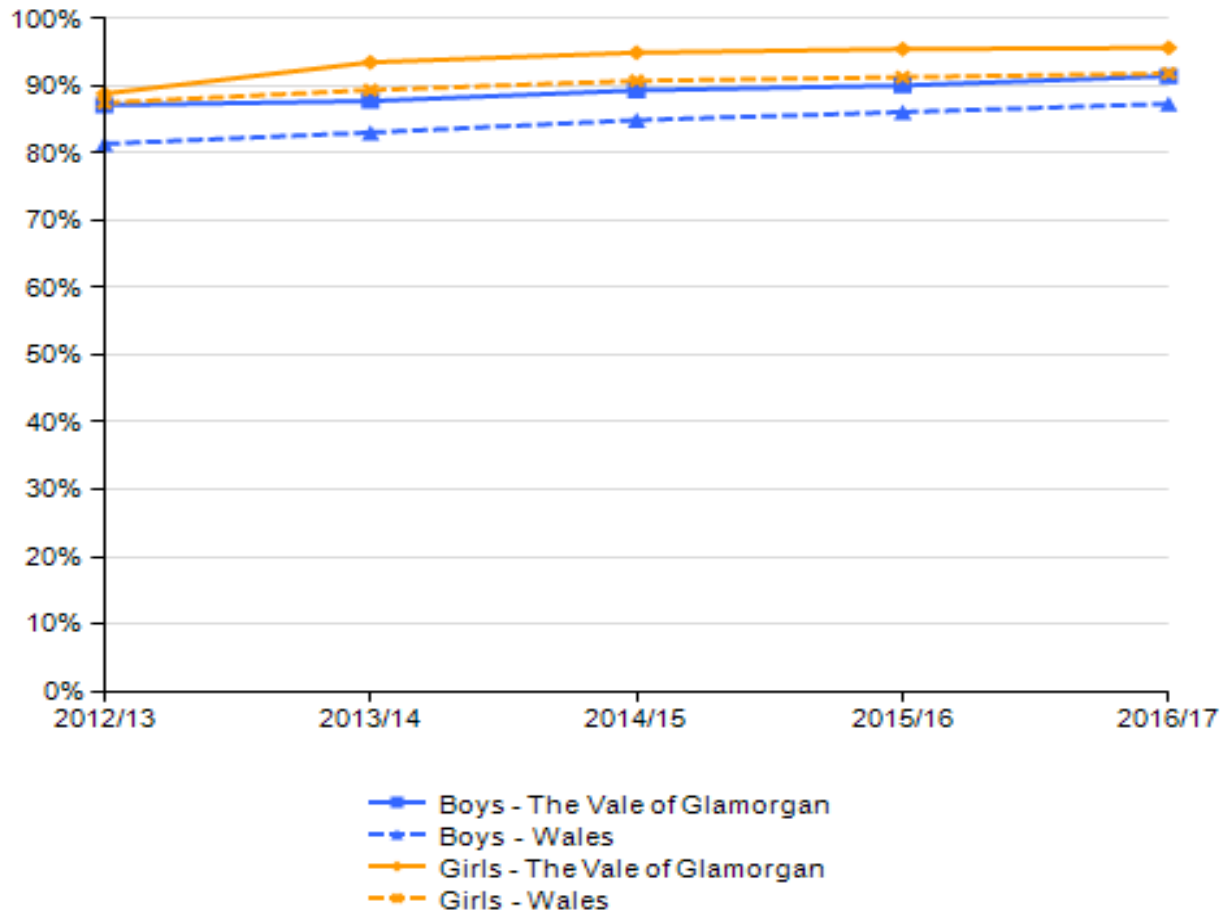
# Key Stage 2 – Core Subjects

6.5 KS2 Science - % pupils achieving L4+, L5+



# Key Stage 2 – Gender Performance

7.1 KS2 CSI - % boys & girls achieving

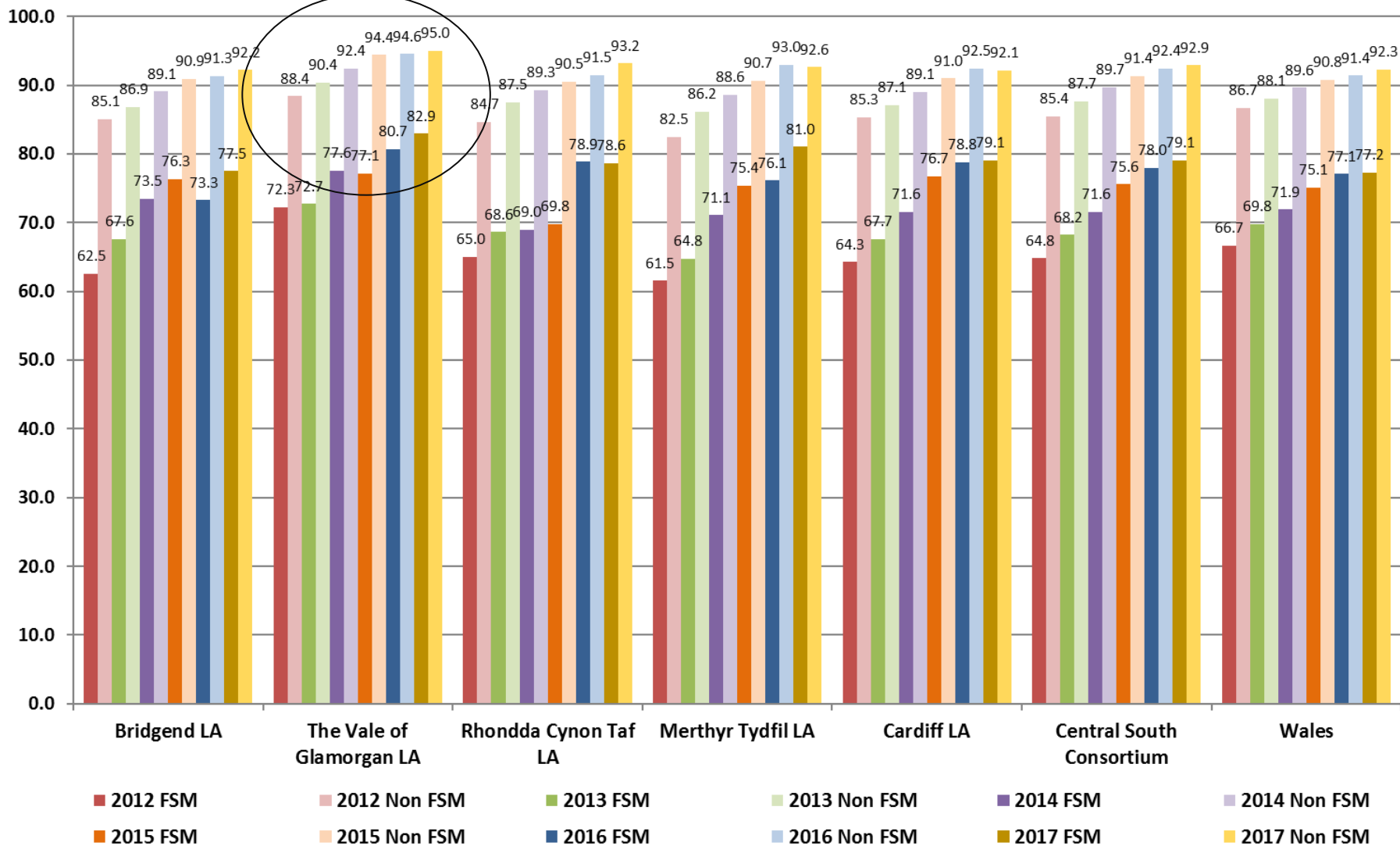




# Key Stage 2 – eFSM vs non eFSM

B1

Key Stage 2 - Core Subject Indicator - FSM vs Non-FSM





# Key Stage 2 – eFSM vs non eFSM

	CSI		Diff (CSI )		
	eFSM	nFSM	LA	CSC	Wales
2013-2014	77.6	92.4	-14.9	-18.1	-17.7
2014-2015	77.1	94.4	-17.3	-15.8	-15.7
2015-2016	80.7	94.6	-13.9	-14.4	-14.3
2016-2017	82.9	95	<b>-12</b>	-13.8	

# Key Stage 2 – eFSM vs non eFSM

	Level 5		Diff (Level 5)	
	eFSM	nFSM	LA	CSC
English	29.4	58.1	-28.7 (-30.4)	-27.6
Welsh	13.3	53	-39.7(-41.5)	-33.9
mathematics	30	62	-32(-28.1)	-27.5
science	30	62.7	-32.7(-30)	-28.6

Figures in brackets are LA differences 2015-2016

# LA comparison - % schools in each quarter

KS2 Level 4+	Quarter 4	Quarter 3	Quarter 2	Quarter 1	% above median
English	10	23	28	40	68
Welsh	0	20	20	60	80
maths	14	30	19	35	54
science	19	26	21	35	56
CSI	19	23	28	30	58
KS2 Level 5+	Quarter 4	Quarter 3	Quarter 2	Quarter 1	% above median
English	0	23	40	37	77
Welsh	0	13	38	50	88
maths	2	12	42	44	86
science	5	9	28	58	86

# LA rankings

KS2	2015-2016	2016-2017	Change
English	2 <sup>nd</sup>	2 <sup>nd</sup>	=
Welsh	3 <sup>rd</sup>	3 <sup>rd</sup>	=
maths	2 <sup>nd</sup>	1 <sup>st</sup>	↑
science	2 <sup>nd</sup>	2 <sup>nd</sup>	=
CSI	2 <sup>nd</sup>	1 <sup>st</sup>	↑

The Vale of Glamorgan is performing above its indicative rank position of 5<sup>th</sup> in all KS2 performance indicators

## KS2 Strengths

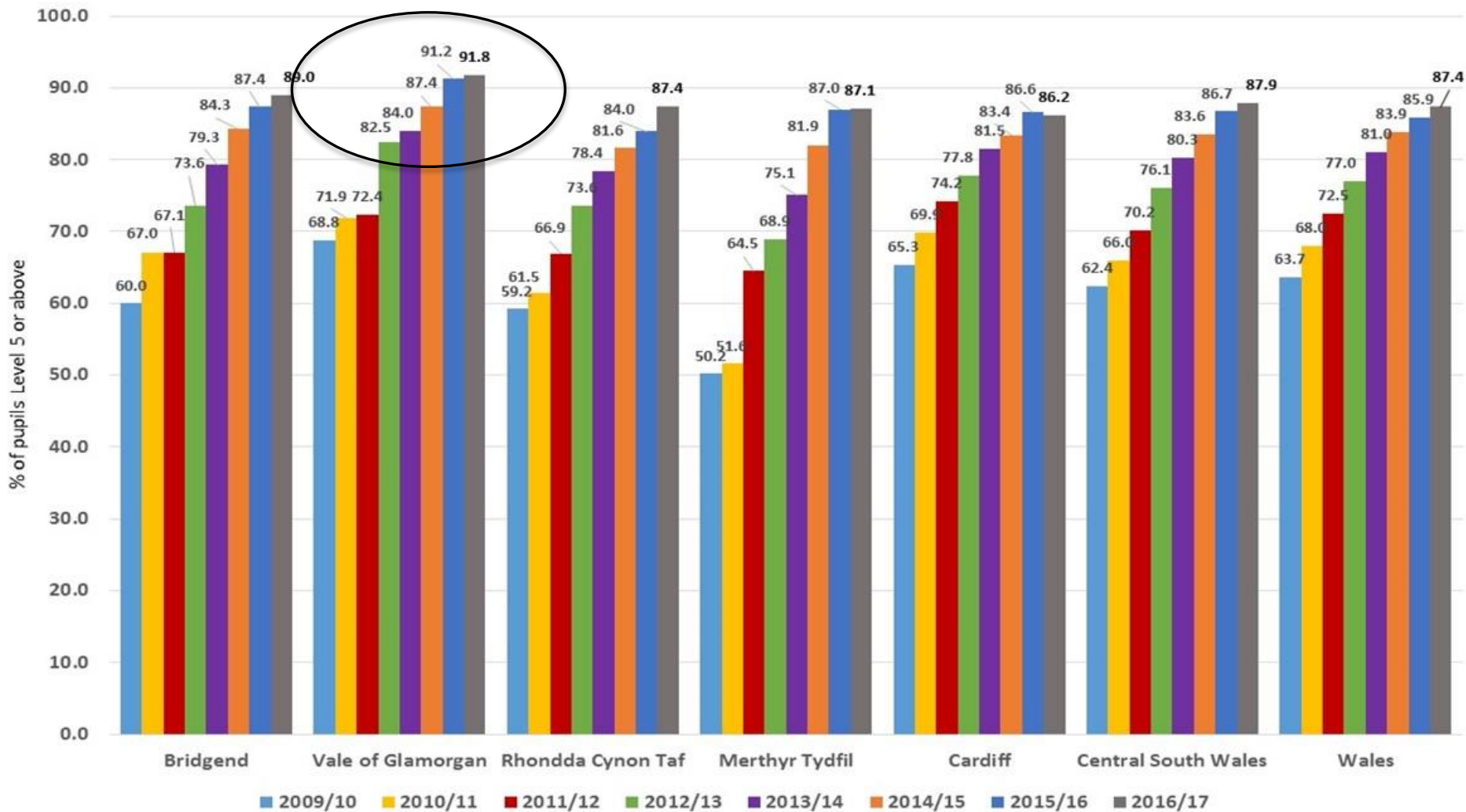
- The percentage of schools in the higher 50%
- Boys' performance
- Performance at level 5+
- LA ranking data

## KS2 Areas for improvement

- The difference in performance between eFSM and nFSM pupils in the CSI (although it is narrowing)
- The performance of eFSM pupils at L5+; the gap has increased and is >28% in all 4 indicators

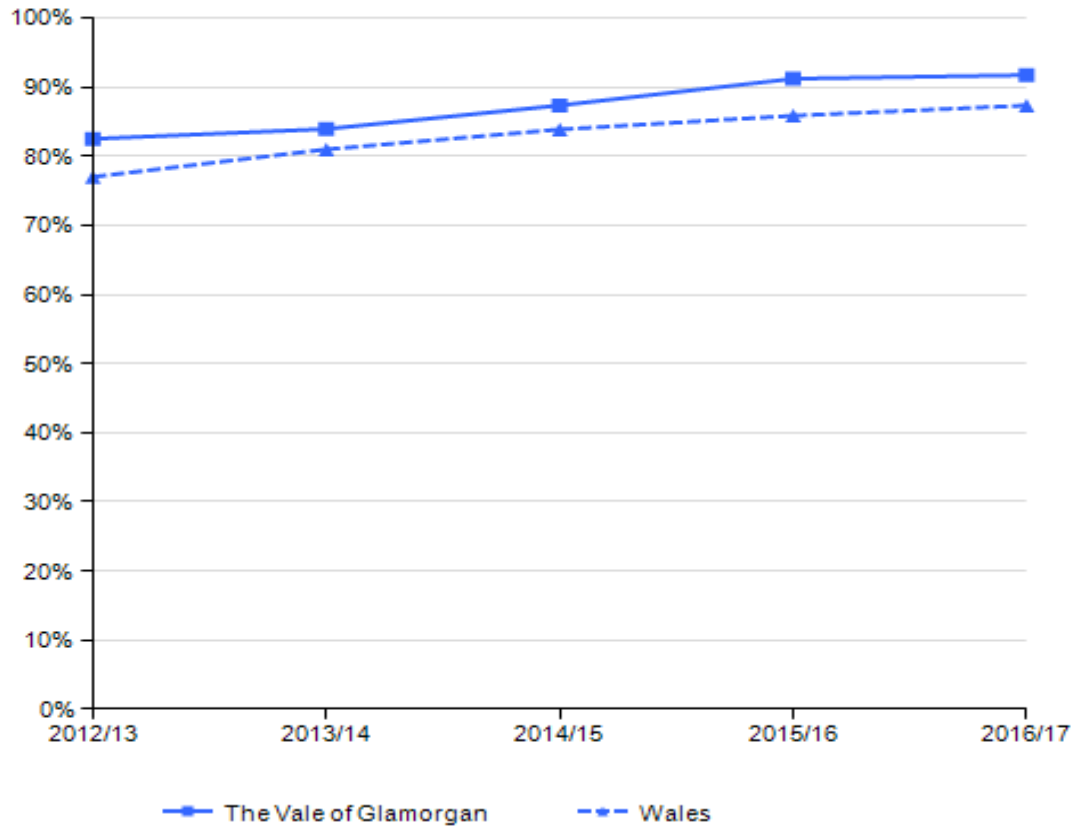
# Key Stage 3 – Regional Performance

Key Stage 3 - Core Subject Indicator



# Key Stage 3 – Vale Performance

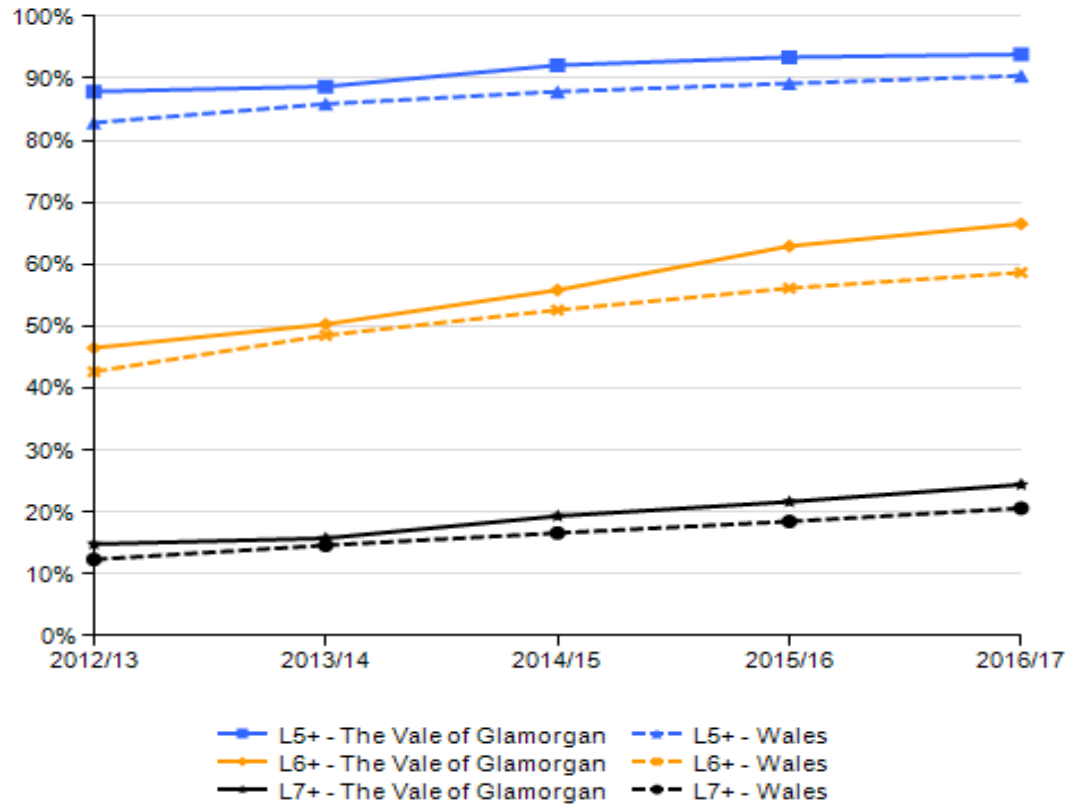
11.1 KS3 CSI - % pupils achieving





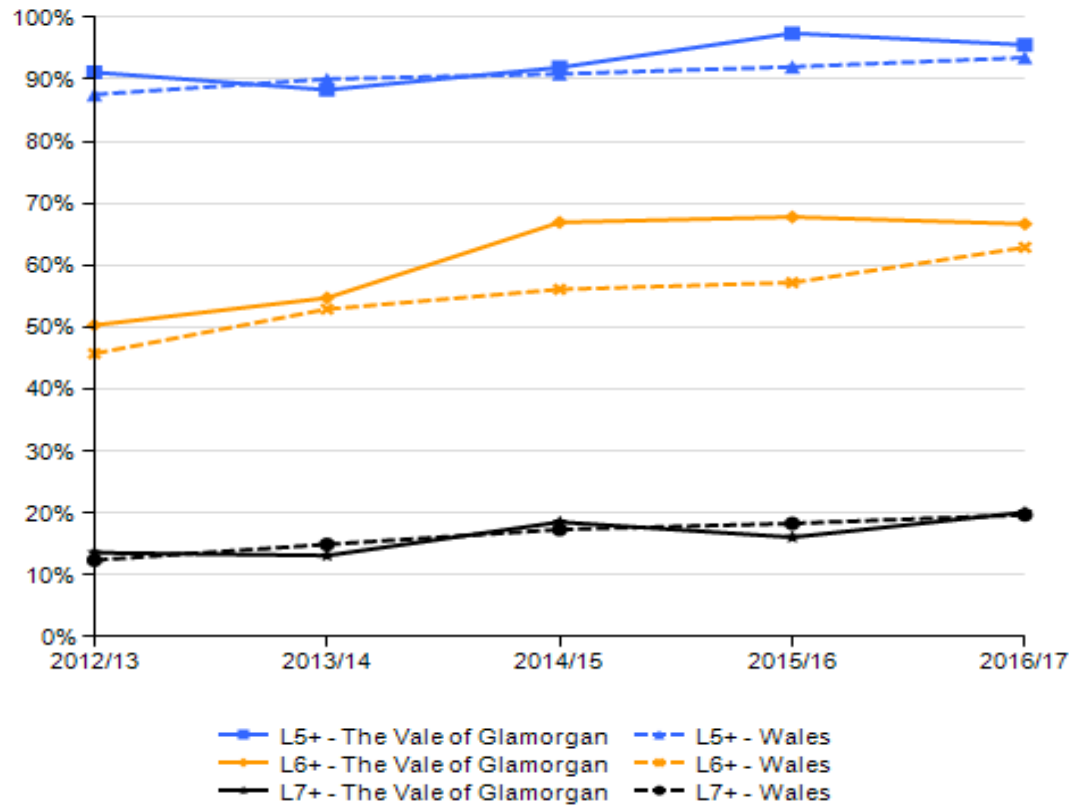
# Key Stage 3 – English

11.2 KS3 English - % pupils achieving L5+, L6+, L7+



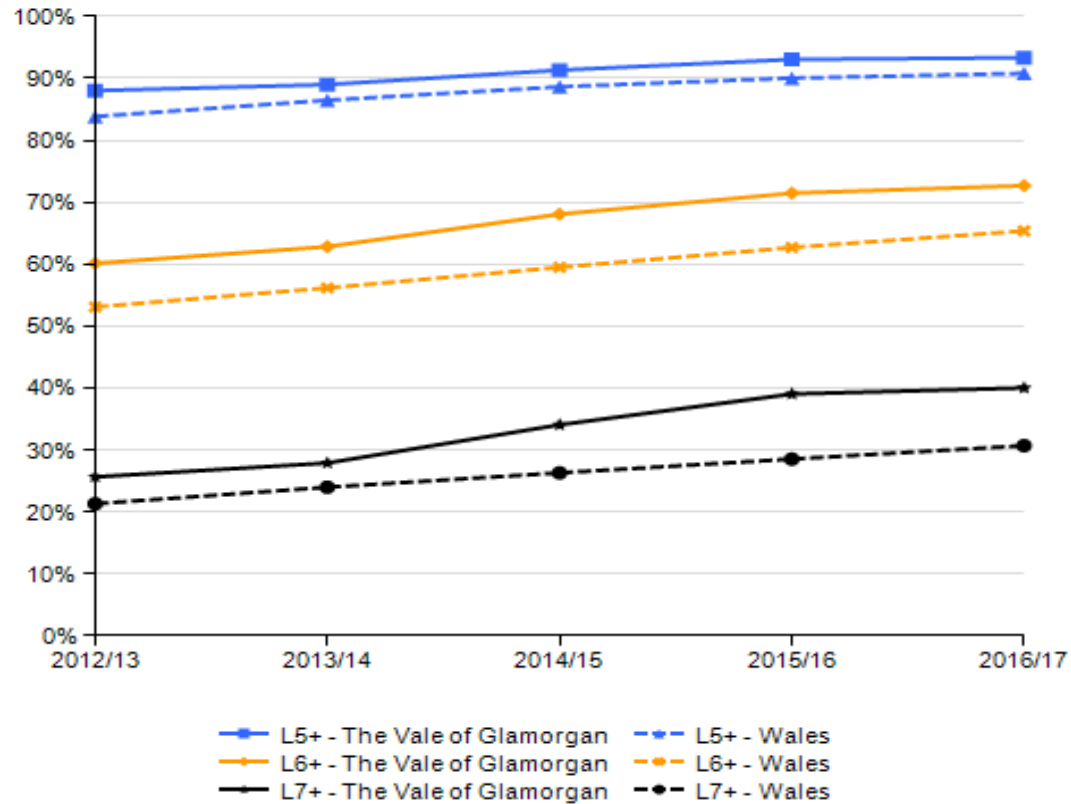
# Key Stage 3 – Welsh

11.3 KS3 Welsh as 1st Language - % pupils achieving L5+, L6+, L7+



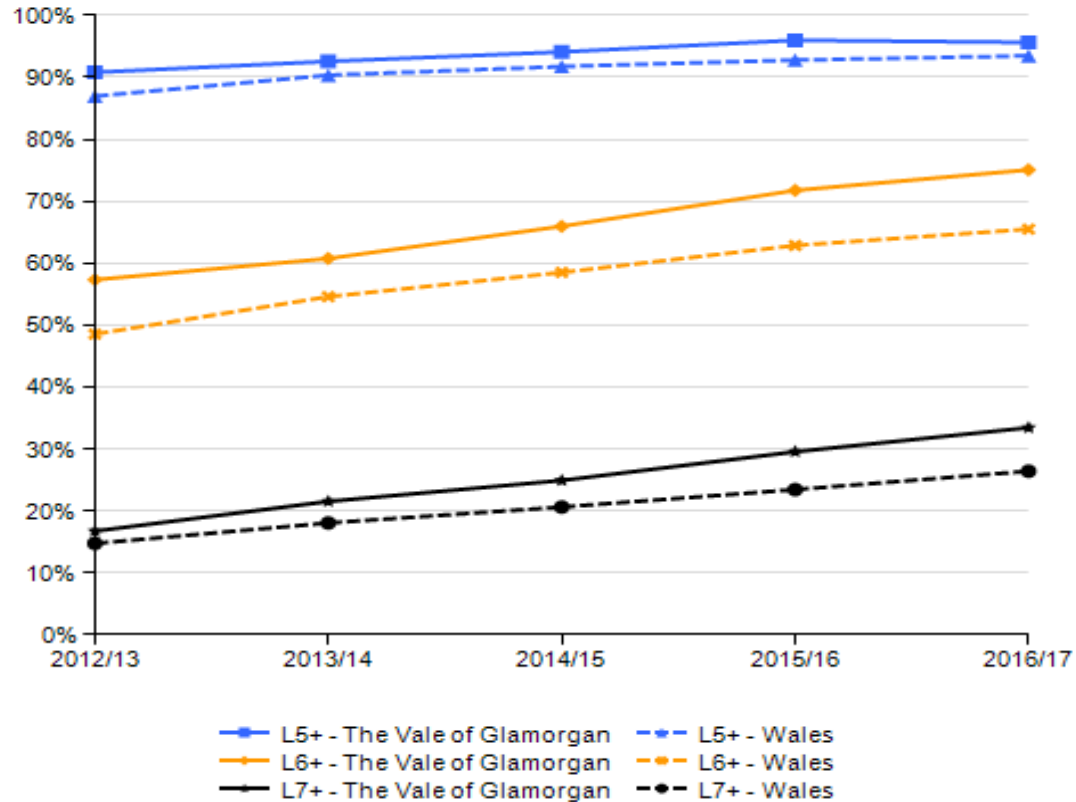
# Key Stage 3 – mathematics

11.4 KS3 Mathematics - % pupils achieving L5+, L6+, L7+



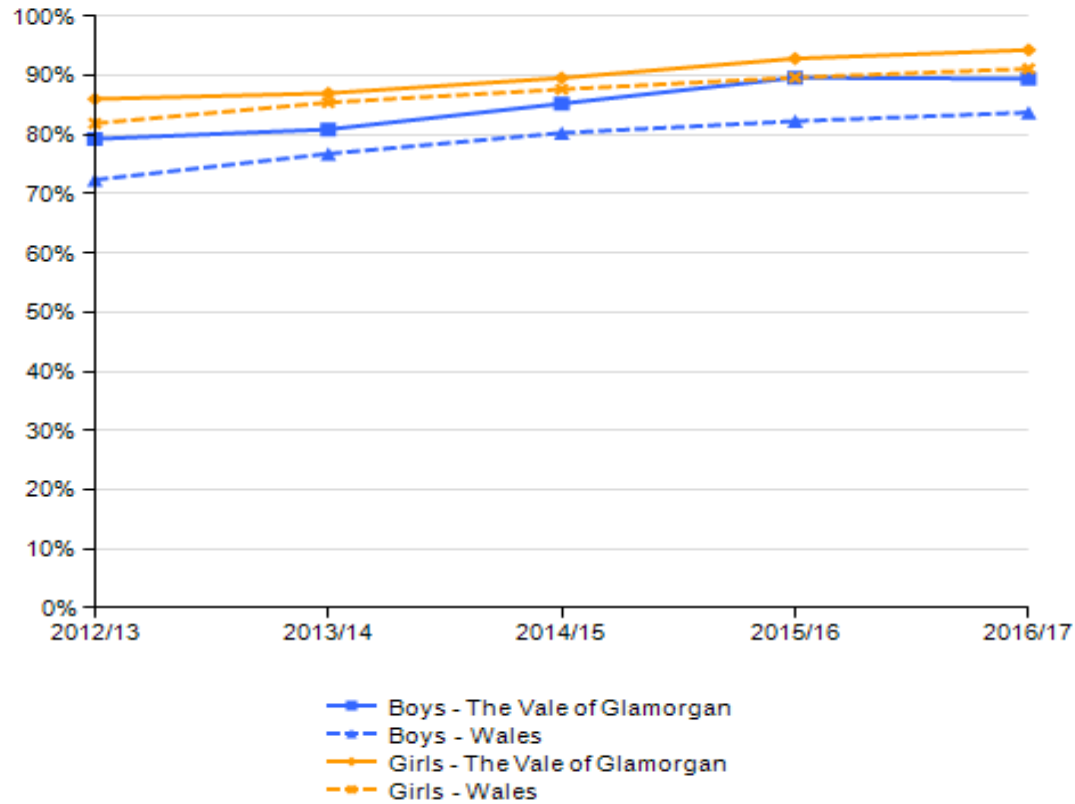
# Key Stage 3 – science

11.5 KS3 Science - % pupils achieving L5+, L6+, L7+



# Key Stage 3 – gender differences

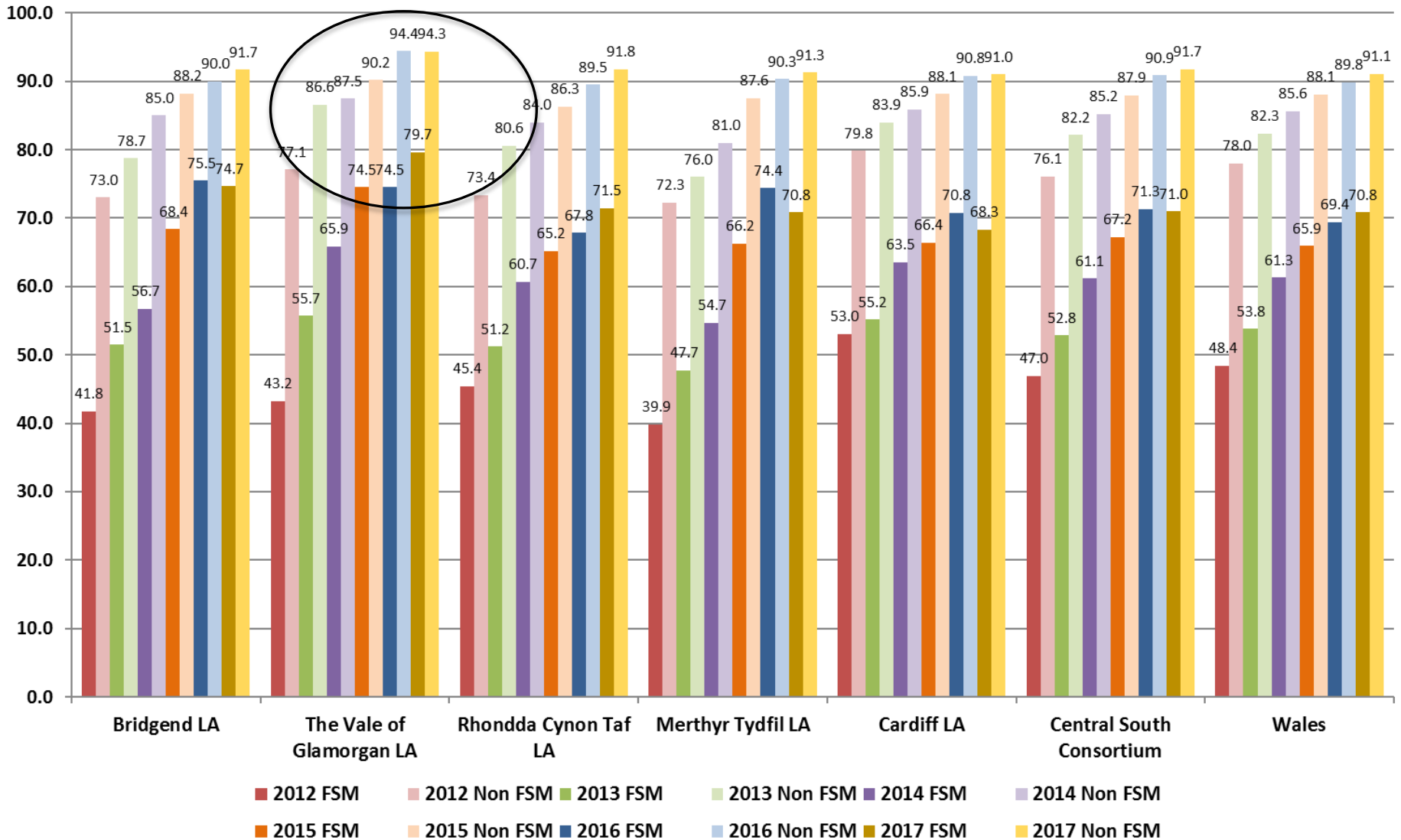
12.1 KS3 CSI - % boys & girls achieving





# Key Stage 3 – eFSM vs non eFSM

Key Stage 3 - Core Subject Indicator - FSM vs Non-FSM



# LA comparison - % schools in each quarter

Level 5+

KS3 level 5+	Quarter 4	Quarter 3	Quarter 2	Quarter 1	% above median
English	0	25	13	63	76
Welsh	0	0	0	100	100
maths	0	13	38	50	88
science	0	13	38	50	88
CSI	0	0	38	63	100

# LA comparison - % schools in each quarter

Level 6+

KS3 level 6+	Quarter 4	Quarter 3	Quarter 2	Quarter 1	% above median
English	13	0	50	38	88
Welsh	0	0	0	100	100
maths	0	13	50	38	88
science	0	0	38	63	100



# LA comparison - % schools in each quarter

Level 7+

KS3 level 7+	Quarter 4	Quarter 3	Quarter 2	Quarter 1	% above median
English	13	13	38	38	50
Welsh	0	0	0	100	100
maths	0	13	13	75	88
science	13	0	38	50	88

# LA rankings

KS3	13/14	14/15	15/16	16/17	Change
English	6	3	3	<b>3</b>	=
Welsh	15	9	3	<b>4</b>	↓
maths	5	6	4	<b>3</b>	↑
science	8	7	2	<b>4</b>	↓
CSI	7	5	4	<b>4</b>	=

The Vale of Glamorgan is performing above its indicative rank position of 5<sup>th</sup> in all key stage 3 performance indicators

## Key Stage 3 Strengths

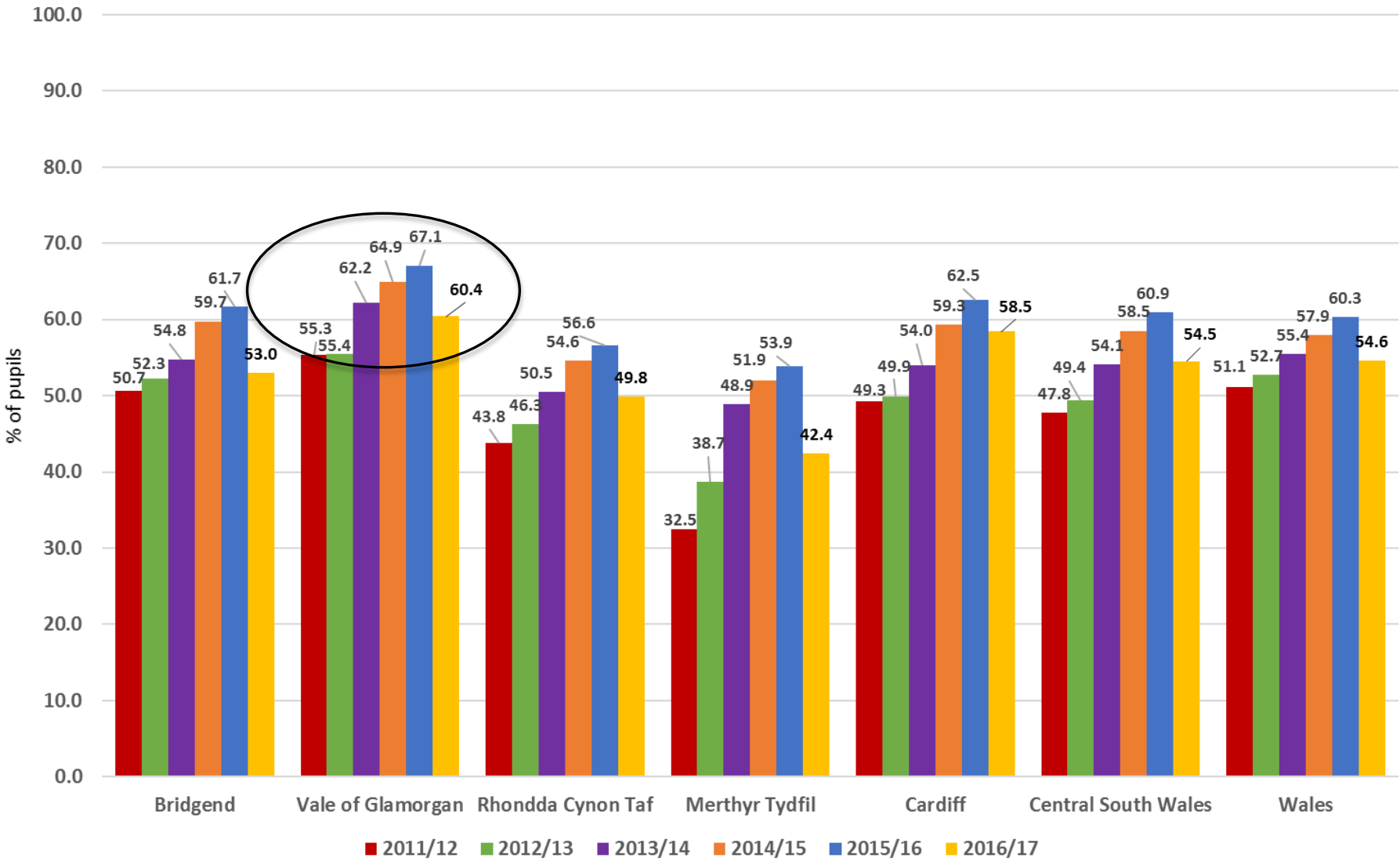
- Standards are strong
- Performance above expected level
- Performance of eFSM pupils increased in all measures at expected level
- LA rankings

## Key Stage 3 Areas for improvement

- Performance of eFSM pupils, particularly at level 6+ and level 7+ where the gap is widening

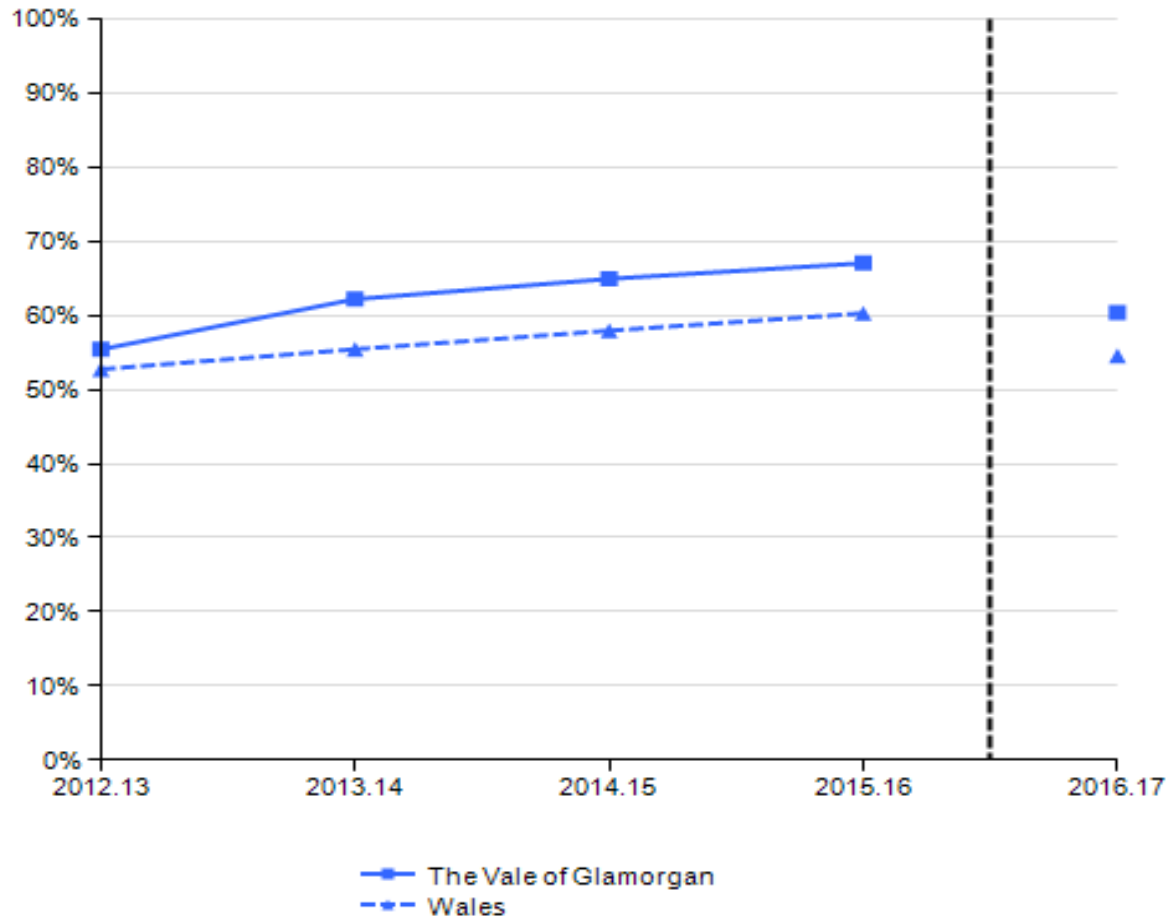
# Key Stage 4 – Regional Performance

Key Stage 4 - Level 2 Threshold including English/Welsh or Mathematics



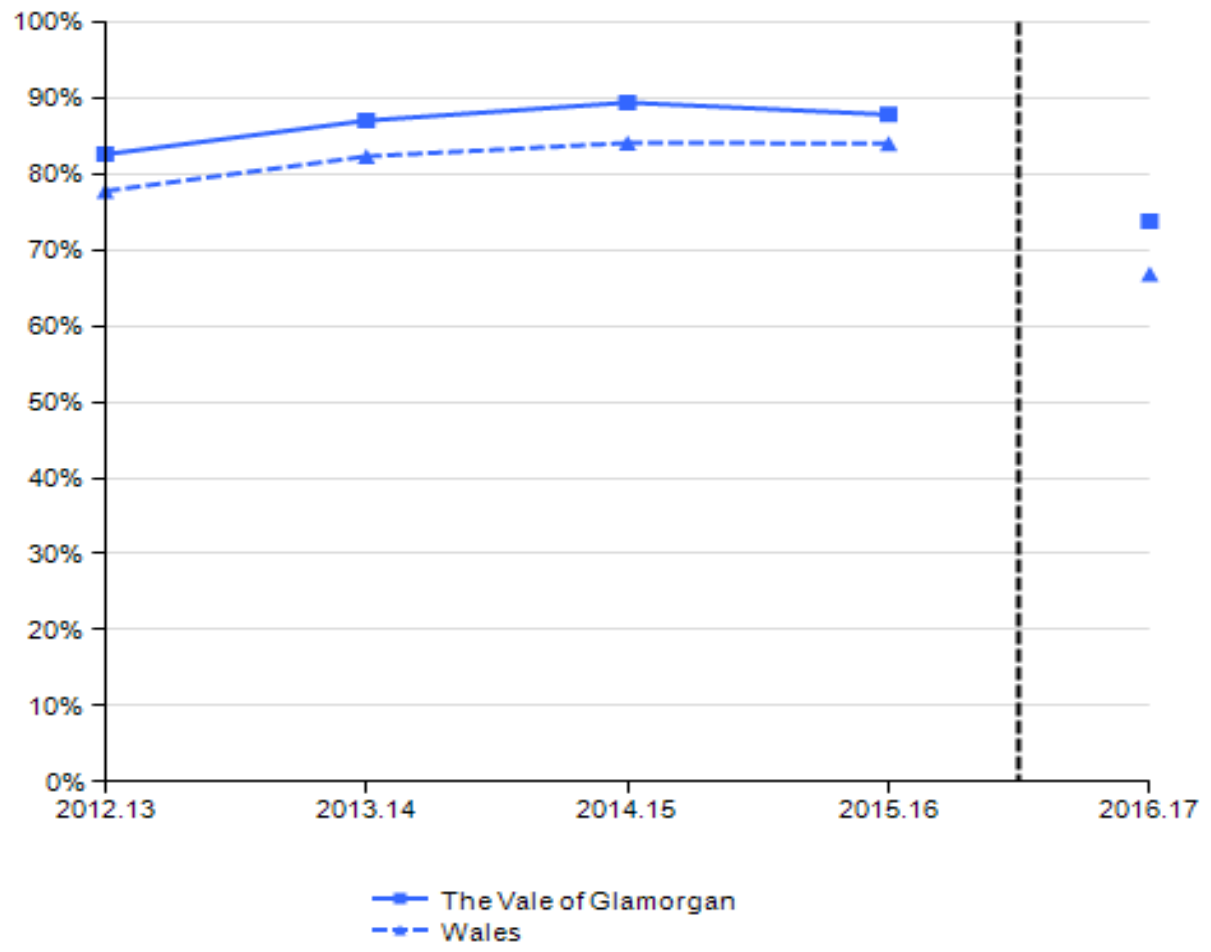
# Key Stage 4 – Vale of Glamorgan

**16.1 KS4 L2 inc E/W & M - % Year 11 pupils achieving (% 15 year olds achieving for data prior to 2015/16)**



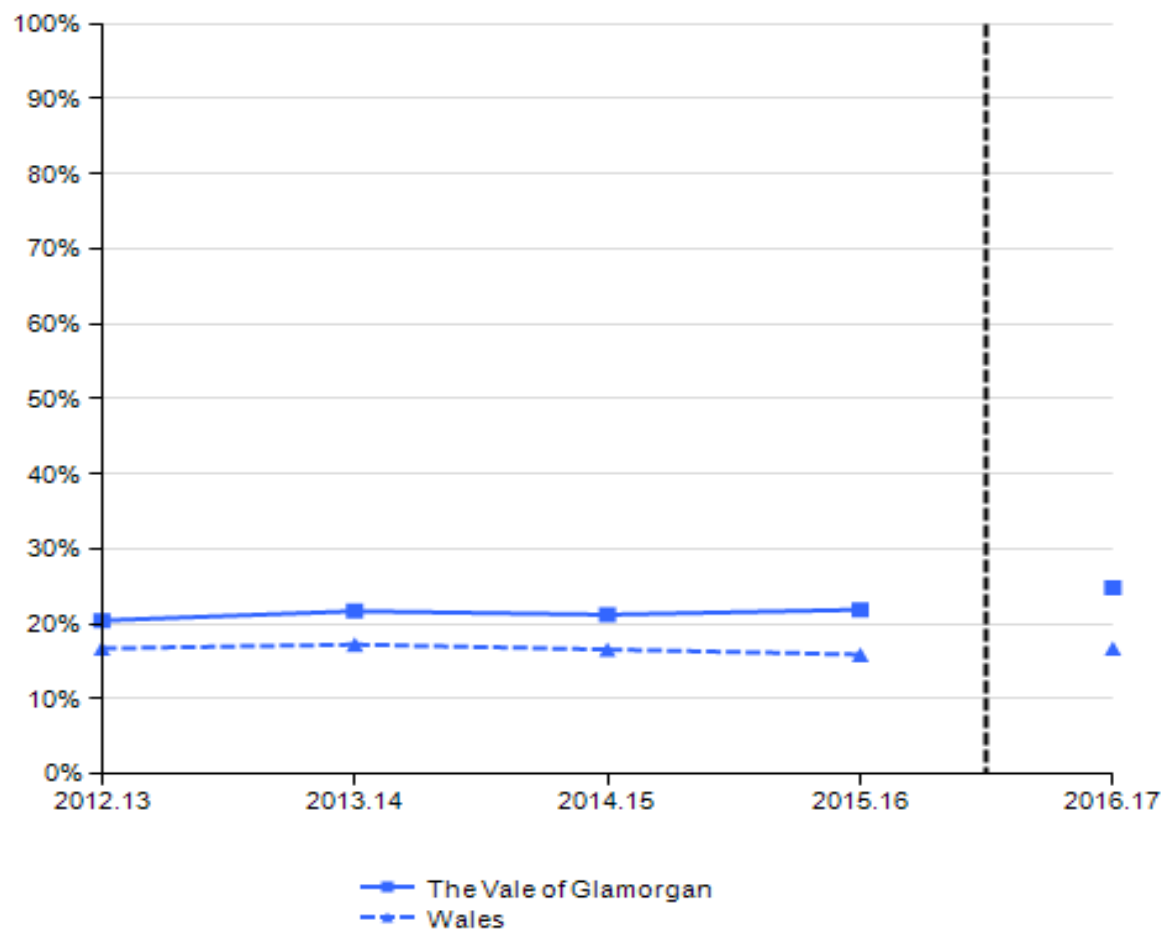
# Key Stage 4 – Vale of Glamorgan

16.2 KS4 L2 - % Year 11 pupils achieving (% 15 year olds achieving for data prior to 2015/16)



# Key Stage 4 – Vale of Glamorgan

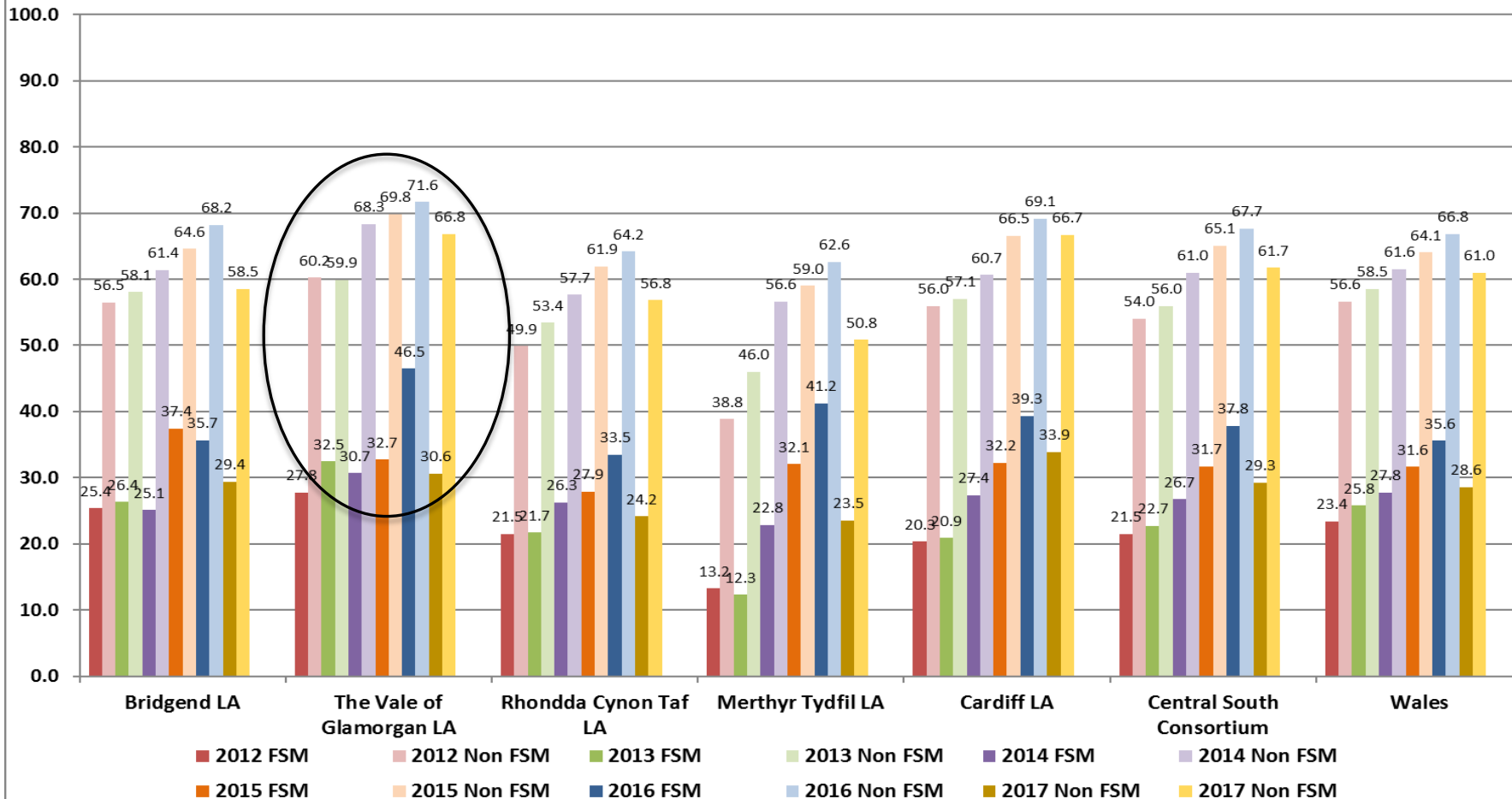
16.8 KS4 5+ A\*-A or equivalent- % Year 11 pupils achieving (% 15 year olds achieving for data prior to 2015/16)





# Key Stage 4 – eFSM vs non eFSM

Key Stage 4 - Level 2 Threshold inc EWM - FSM vs Non-FSM



# Key Stage 4 – Vale of Glamorgan

	2013	2014	2015	2016	2017
CSI	50	60	64	66	60.2
Level 1	95	94	96	95	95.9
Level 2	83	87	89	87	73.8
Level 2+	55	62	65	67	60.4
5 A*-A	20.5	21.7	21.2	21.9	24.8
English	66	71	77	74	69.2
Welsh	83	79	76	77	79.3
maths	62	68	70	74	67.3
science	77	87	91	91	90*

\* Science GCSE only – 60.7%

# Key Stage 4 – Vale of Glamorgan

	2014	2015	2016	2017	2017 old
Level 2	87	89	87	73.8	82.3
Level 2+	62	65	67	60.4	62.3
English	71	77	74	69.2	73.6
Welsh	79	76	77	79.3	79.3

# LA comparison - % schools in each quarter

KS4	Quarter 4	Quarter 3	Quarter 2	Quarter 1	% above median
Level 2 +	25	38	0	38	38
Level 2	13	38	13	38	50
Level 1	13	25	0	63	63
Capped 9	0	25	13	63	75
CSI	25	38	0	38	38
WBQ skills chall.	0	38	13	50	63
English	25	38	13	25	38
Welsh	0	0	100	0	100
Maths (Best of)	38	13	25	25	50
Mathematics	25	38	0	38	38
Numeracy	25	25	25	25	50
Science	0	0	50	50	100

# KS4 LA rankings

KS4	13/14	14/15	15/16	16/17	Change
Level 2+	2	2	2	4	↓
Level 2	6	4	7	4	↑
Level 1	16	12	12	5	↑
Capped 8	9	5	7	2 *	↑
CSI	3	1	2	4	↓
5 A*- A	3	1	1	1	=
No quals	5	2	11	5	↑

The Vale of Glamorgan is performing at or above its indicative rank position of 5<sup>th</sup> in all key stage 3 performance indicators

\*capped 9 - 2<sup>nd</sup> also

## Key Stage 4 Strengths

- Improvements at level 1 performance
- Performance at 5 A\*-A
- Capped 9
- Comparative performance of English
- Performance in science
- LA rankings

# Key Stage 4 Areas for improvement

- Performance of eFSM pupils at L2+
- Mathematics
- Performance of boys
- 5 A\*-A for eFSM pupils

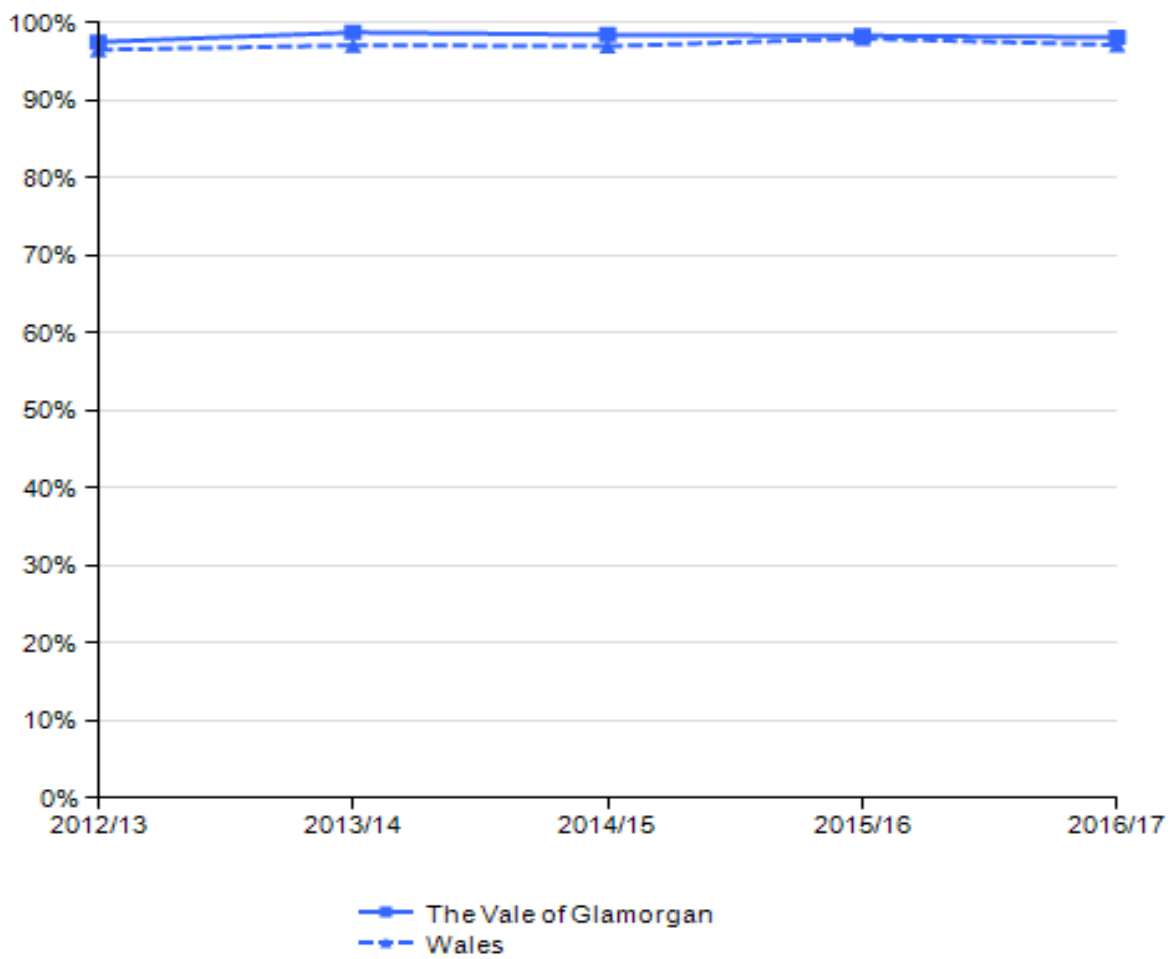
# Key Stage 5 regional performance

Measure	Year	Bridgend	VoG	RCT	Cardiff	CSC
Level 3 Threshold	2017	98.1	<b>98.1</b>	96.3	97.5	97.4
	2016	98.3	<b>98.3</b>	97.0	97.6	97.7
	Change	<b>-0.3</b>	<b>-0.2</b>	<b>-0.7</b>	0.1	<b>-0.3</b>
A Level 3 A*-A grades	2017	9.4	<b>15.6</b>	5.5	16	11.7
	2016	6.1	<b>9.1</b>	4	10.2	7.4
	Change	3.4	<b>6.5</b>	1.5	5.9	4.3
A Level 3 A*-C grades	2017	54.2	<b>65.6</b>	44.9	61.8	56.4
	2016	71.3	<b>80.4</b>	65.2	76.4	73
	Change	<b>-17.2</b>	<b>-14.8</b>	<b>-20.3</b>	<b>-14.6</b>	<b>-16.5</b>



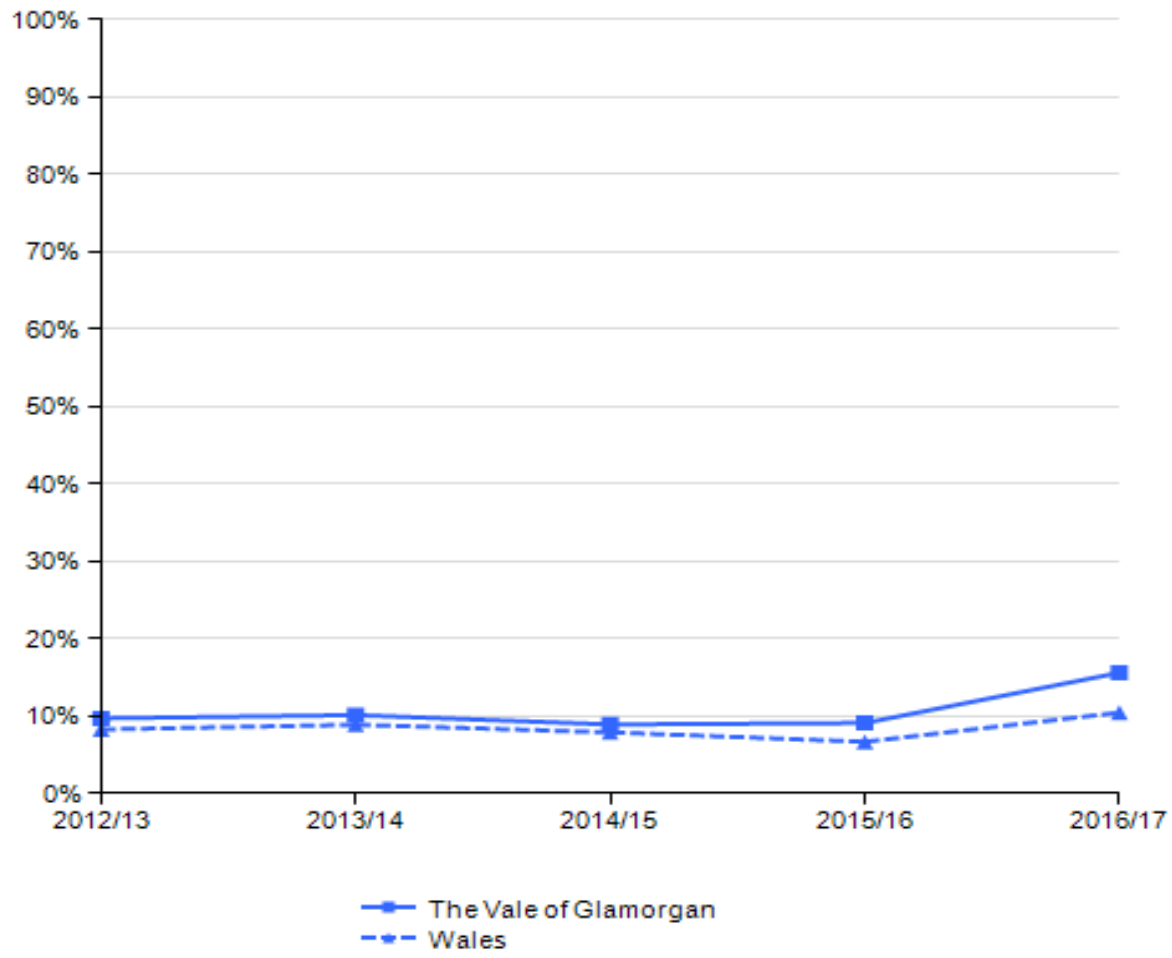
# Key Stage 5 performance

23.1 6th Form L3 - % 17 year olds achieving



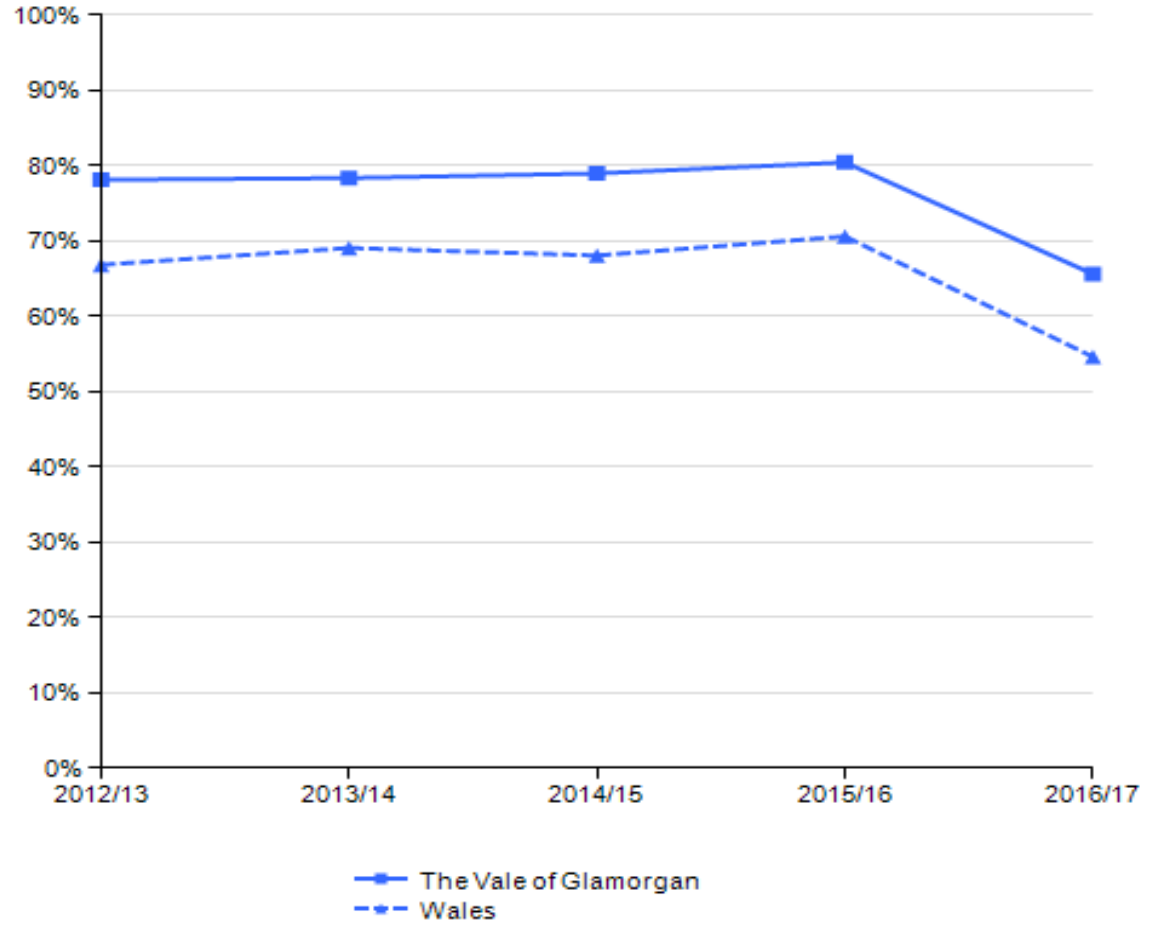
# Key Stage 5 performance

23.3 6th Form 3 A\*-A - % 17 year olds achieving



# Key Stage 5 performance

23.4 6th Form 3 A\*-C - % 17 year olds achieving



# LA rankings

Post 16	2016-2017
Level 3 threshold	3 <sup>rd</sup>
3 A*-A	2 <sup>nd</sup>
3 A*-C	1 <sup>st</sup>

The Vale of Glamorgan is performing above its indicative rank position of 5<sup>th</sup> in all Foundation Phase performance indicators

# Key Stage 5 Strengths

- Increase in 3 A\*- A grades
- Steady performance at level 3 threshold

# Key Stage 5 Areas for improvement

- 3 A\*-C grades