

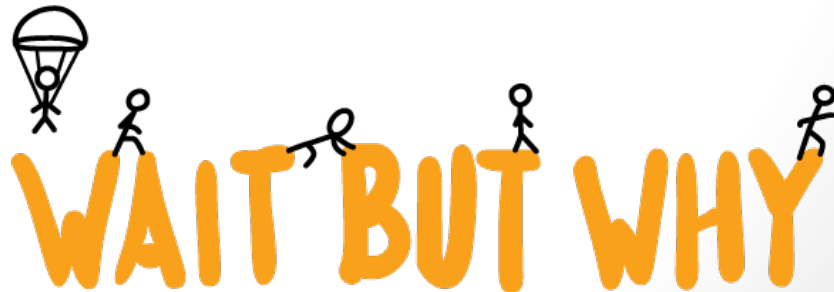


# Purpose of the Presentation

To update scrutiny on the current consultation on the proposal to reconfigure primary provision in the Western Vale through:

- The creation of a new 210 place primary school, with a 48 part time place nursery class at the land north of the railway line, Rhoose,
- The migration of staff and pupils from Llancarfan Primary School into the new site and; .
- Extending the age range of the school

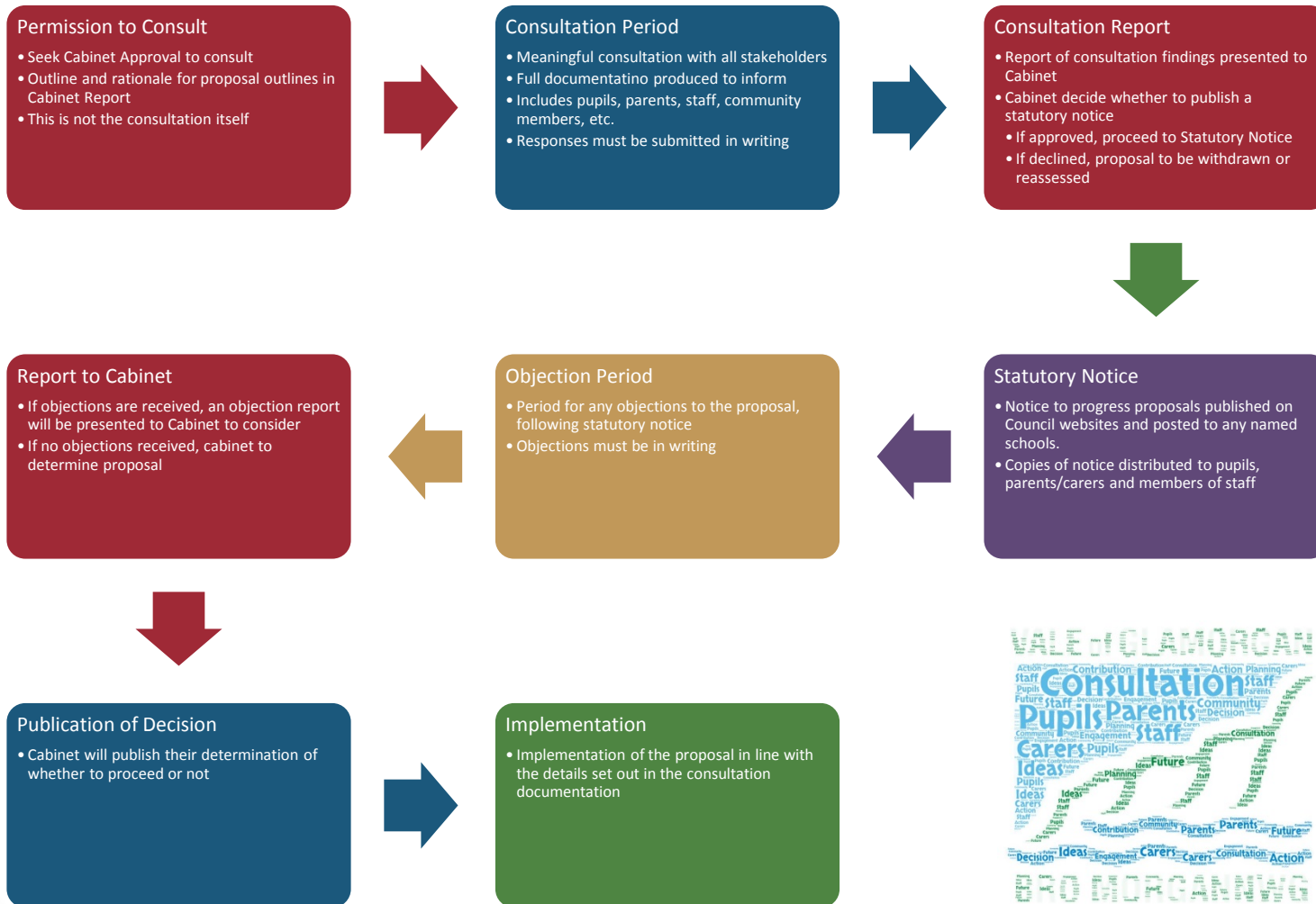
Consultation taking place from 5 March – 20 April 2018



# Benefits of the proposal

- The staff and pupils at Llancarfan would benefit from a new 21<sup>st</sup> century school building
- Increasing surplus capacity at Llancarfan School would be addressed
- Increasing demand for pupil places within the Rhoose area would be met
- Revisions to catchment areas within the Western Vale are expected to increase pupil numbers at other schools, improving future sustainability and contributing to the Council's commitment to reduce surplus capacity in its schools.
- Small site issues associated with the school on a confined site such as the provision of outdoor sporting facilities would be addressed.
- Congested access to the school through the village and lanes would be addressed.
- A nursery would be established supporting continuity and progression in children's learning from age 3 and would support stability of numbers for the school.

# How – The Road to a Decision



# Context

## Llancarfan Primary School

- 54 children reside in the Llancarfan catchment area of which 31 (58%) attend Llancarfan, 14 (26%) attend other English medium schools and 9 (16%) attend Welsh medium schools
- School Capacity 126
- Current Number on Roll 106 (16% surplus)
- 31 children (30%) live in Llancarfan catchment area
- 36 children (34%) live in Rhoose
- 39 children (36%) live outside the catchment area other than Rhoose



# Context

## The Village of Rhoose – Housing Developments

Phase	Name	Anticipated start/finish	Dwellings	Nursery pupil yield	Primary pupil yield	Secondary pupil yield
1	Land north west of railway line	Commenced June 2017 (Taylor Wimpey)	350	35	97 (81 EM, 10 WM, 6 DEN)	87
2	Land north east of railway line	Planning application lapsed April 2017.	350	35	97 (81 EM, 10 WM, 6 DEN)	87
<b>Total</b>			700	70	194	174
Pupil yield allowance - 84% enter English medium 10% enter Welsh medium 6% enter denominational						

CONTEXT

MATTERS

# Context

	<u>Pupil Projections excluding known housing development</u>				
Rhws Primary Capacity	PLASC 2019	PLASC 2020	PLASC 2021	PLASC 2022	PLASC 2023
375	365	340	341	349	355

	<u>Pupil Projections including North West housing development (350 houses)</u>				
Rhws Primary Capacity	PLASC 2019	PLASC 2020	PLASC 2021	PLASC 2022	PLASC 2023
375	376	373	394	417	412

	<u>Pupil Projections including North West and North East housing development (700 houses)</u>				
Rhws Primary Capacity	PLASC 2019	PLASC 2020	PLASC 2021	PLASC 2022	PLASC 2023
375	376	373	405	451	465

# Context

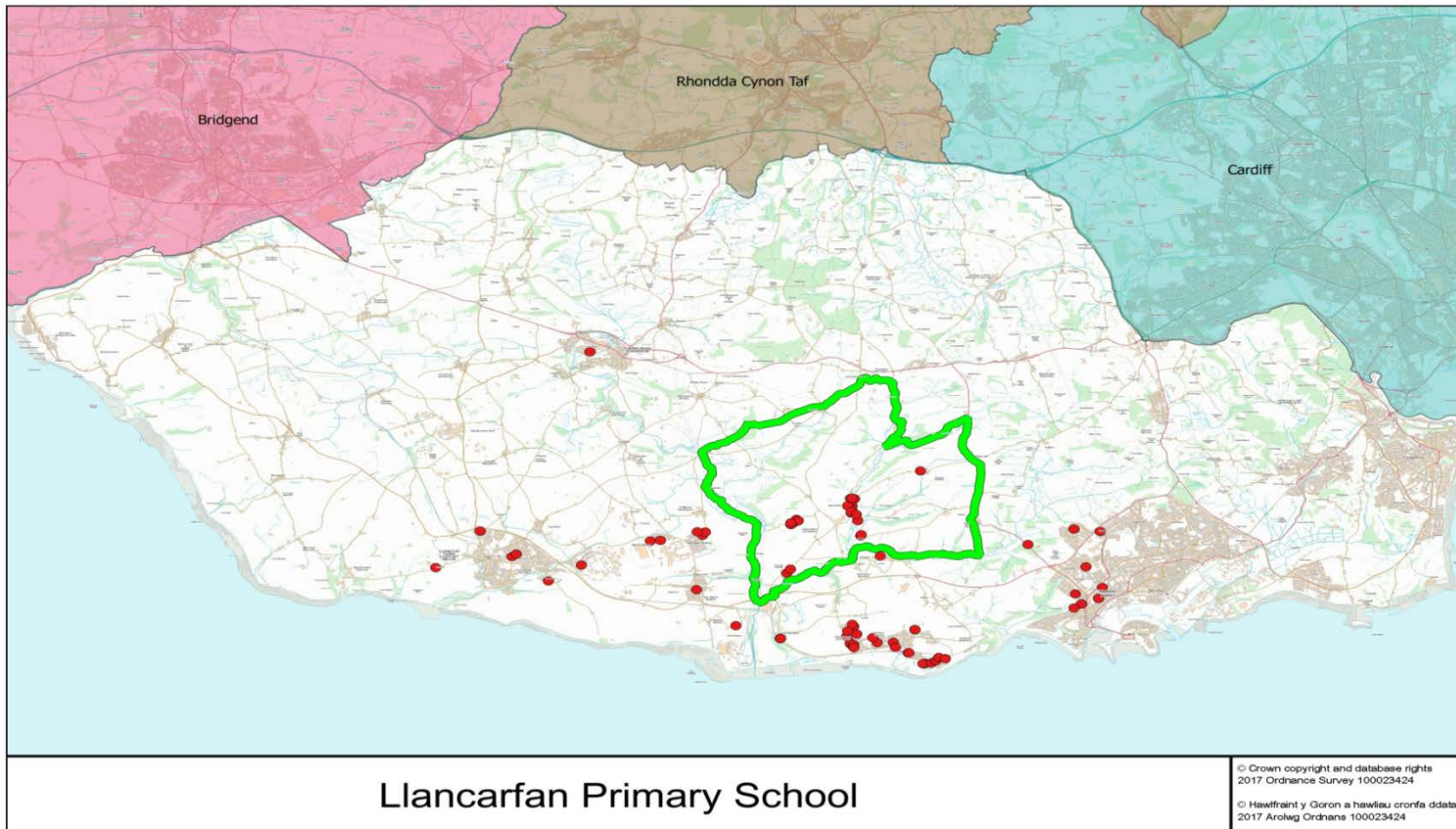
## Llancarfan & Rhose

Numbers of children attending from respective catchment area schools								
School	NOR	Llancarfan Catchment	Rhose Catchment	Barry Catchment	Llantwit Catchment	Cowbridge Catchment	Penarth/Dinas Catchment	Other
Llancarfan	106	31	36	15	22	1	0	1
Rhws	371	0	350	15	6	2	1	0

- **70% of Llancarfan pupils live outside the catchment area**
  - **51% of those live in Rhws**

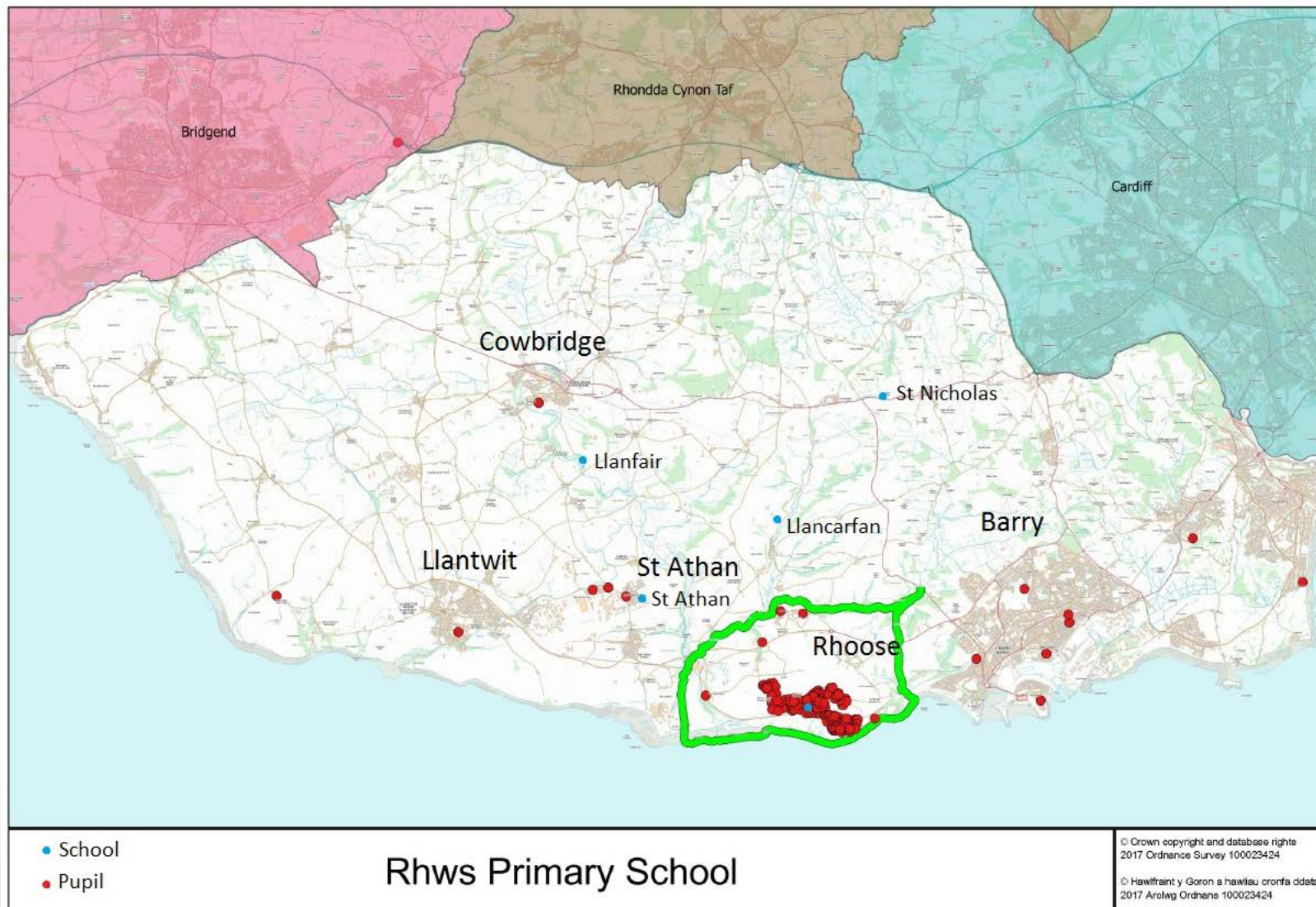


# Where children are coming from



# Rhws Primary

## Where Children Are Coming From



# Challenge & Opportunity



- Expansion required to meet demand from new housing
- New pupils from Rhoose developments could result in substantial surplus capacity if a new school is built in addition to maintaining Llancarfan Primary School at its current site
- Site challenges in Llancarfan prevent new build
- Sustainability and viability of Llancarfan Primary School in the longer-term
- Addresses financial challenges of a small school (< one form entry)
- 21<sup>st</sup> Century Schools funding available to address condition, sustainability and sufficiency
- Local schools reflective of community demand



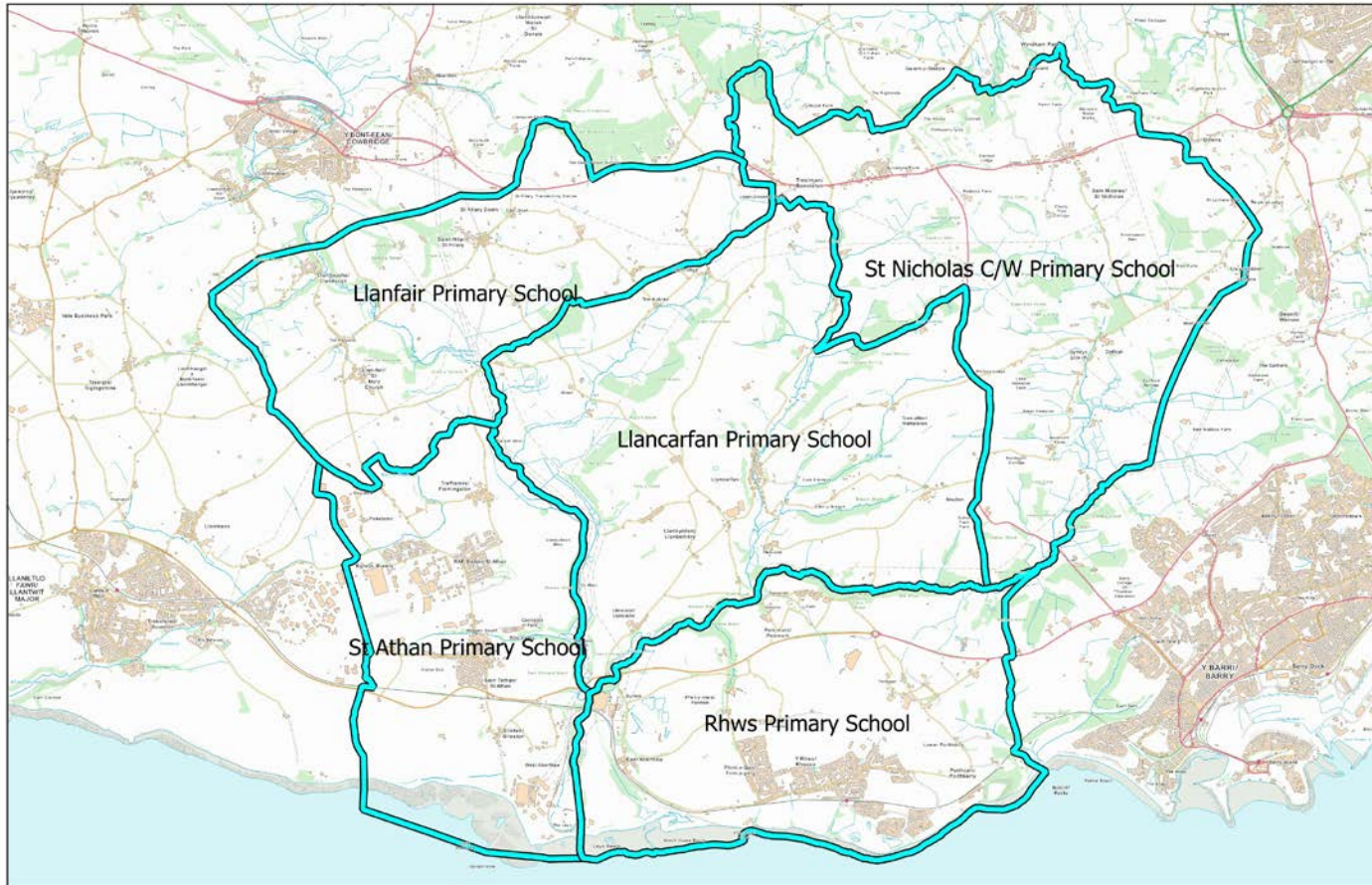
# Principles



- This is not a school closure
  - No redundancies, changes in contracts, staffing consultations etc.
- Commitment to any pupils on roll up to date of migration
  - Includes existing admissions arrangements for pupils and priority for siblings
  - Parental preference will always be accommodated, where possible
- No significant change for other schools
  - Existing school in Rhoose nearing maximum capacity
  - 1 mile away from proposed site of new building
  - No plans for amalgamation or federation as part of this proposal
- Redrawing catchment areas for primary provision is required
  - Contributes to the Council's commitment to Welsh Government in reducing surplus places
  - Increases revenue funding for affected schools through the increase in pupil numbers

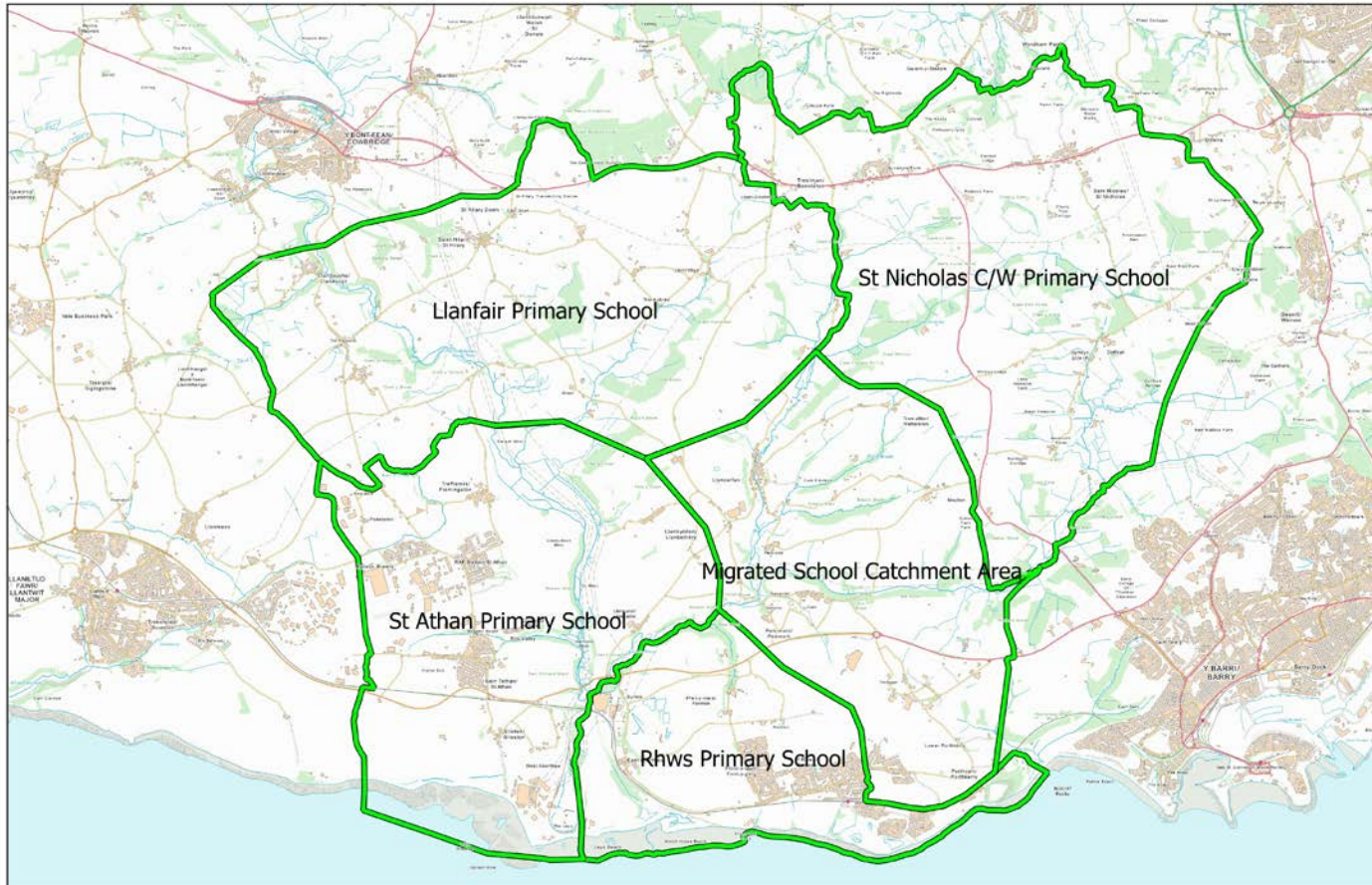
# Current Catchment Area

Current Primary School Catchment Areas



# Proposed Catchment Area

Proposed Primary School Catchment Areas





# Financial Implications

**Cost to build a new 210 place school building** **£4.185M**

**Breakdown of funding:**

- S106 Contributions **£1.639M**
- Band B Match Funding **£2.092M**
- Council to meet the balance from capital funding **£453.5K**

The s106 contributions outlined above are based on a contribution per dwelling. If the developers decide to build fewer units, then this will affect their financial contribution.

The Council has 5 years to spend s106 contributions, from the date of receipt.

The scheme is wholly reliant on the build rate of the developers as the release of contribution is based on an estimated home occupation schedule.