



CONSERVATION IN THE VALE

Scrutiny Committee Briefing

23 April 2018

Protect, preserve and where possible enhance the built, natural and cultural heritage of the Vale of Glamorgan.

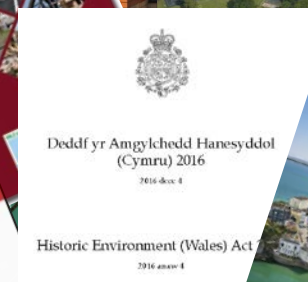
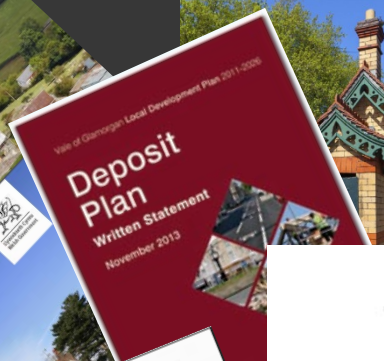


CORPORATE PLAN

Objective 6 – Valuing Culture and Diversity

LEGISLATION AND POLICY

...how and why we do what we do.



FUNCTIONS OF CONSERVATION

- Statutory Essential
 - Listed Building Consent applications
 - Conservation Area Consent applications
 - Planning applications affecting the historic environment
- Statutory Non-essential
 - Designating conservation areas
 - Preparing Conservation Area Appraisal and Management Plans

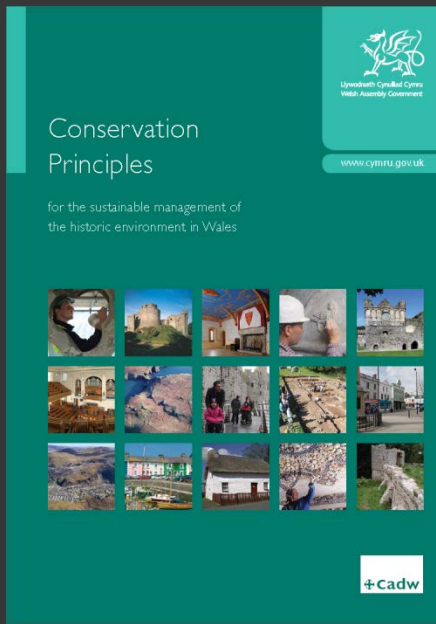
FUNCTIONS OF CONSERVATION

- Non-Statutory Essential
 - Enforcing listed building and conservation area controls
 - Buildings at Risk
- Non-Statutory Non-essential
 - Locally listed buildings 'County Treasures'
 - Urban character studies

PLANNING (LISTED BUILDINGS AND CONSERVATION AREAS) ACT 1990

- Our statutory duty
 - Special regard/attention
 - Desirability
 - Preserving / enhancing
 - Special interest / Character and appearance
- More than just a material consideration. The designated historic environment must be given special attention.
- Concept of Significance

SIGNIFICANCE



- Evidential Value
- Historic Value
- Aesthetic Value
- Communal Value

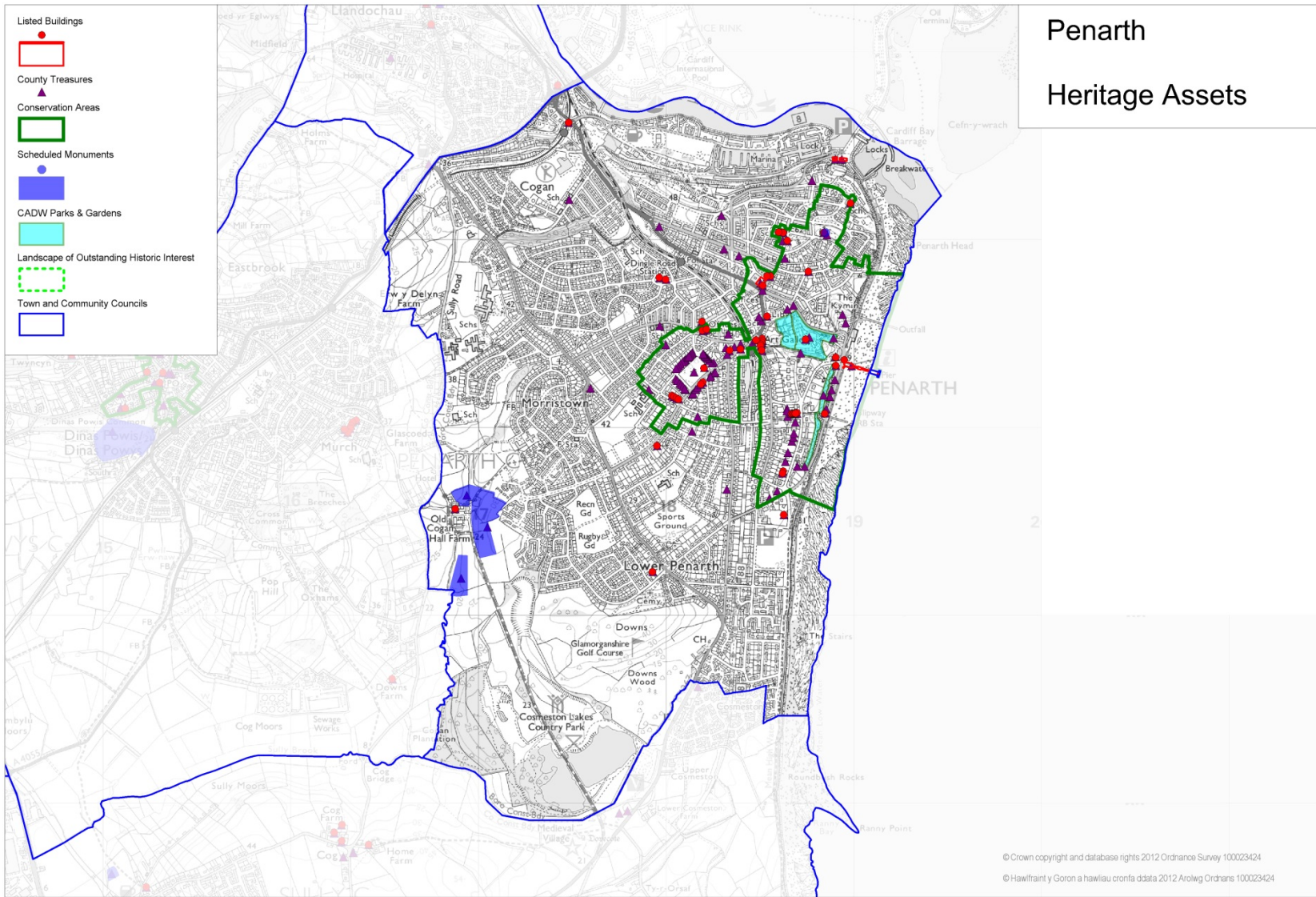
THE VALE'S HISTORIC ENVIRONMENT

How did we get here?

HISTORIC ASSETS

- Scheduled Monuments and Archaeology
- Listed Buildings
- Conservation Areas
- Historic Parks and Gardens
- Historic Landscapes
- Locally Listed Buildings – ‘County Treasures’
- Urban Characterisation

Penarth Heritage Assets

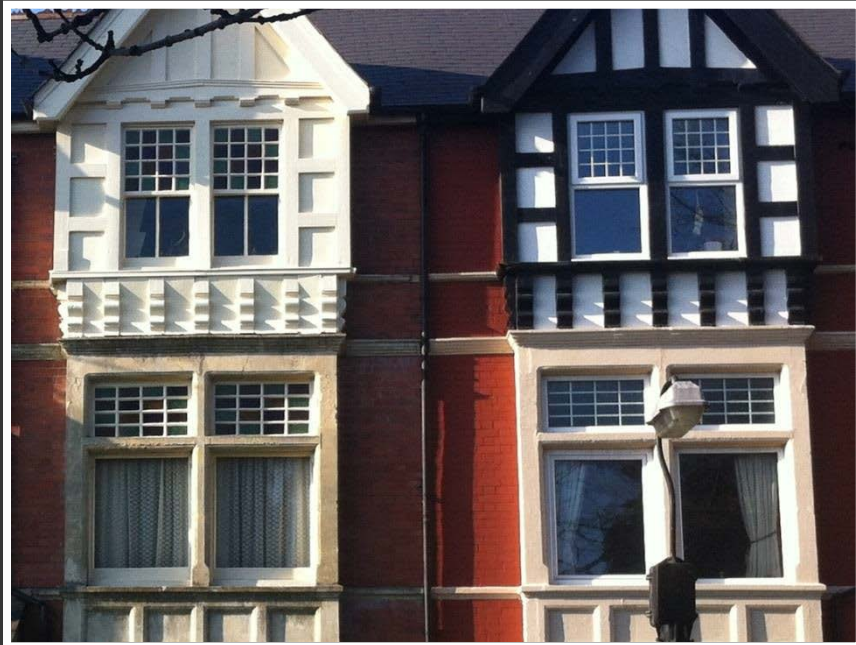








Penarth Article 4 Direction



DESIGN IN THE HISTORIC ENVIRONMENT

“...when we build, let us think we build forever.”

Ruskin

Pastiche

Riverside Development, Richmond

Traditional

Televillage, Crickhowell

Subtle

Library, Hereford Cathedral



Modern

Visitor Centre, Caerphilly Castle

Arrogant

V&A Extension, London

